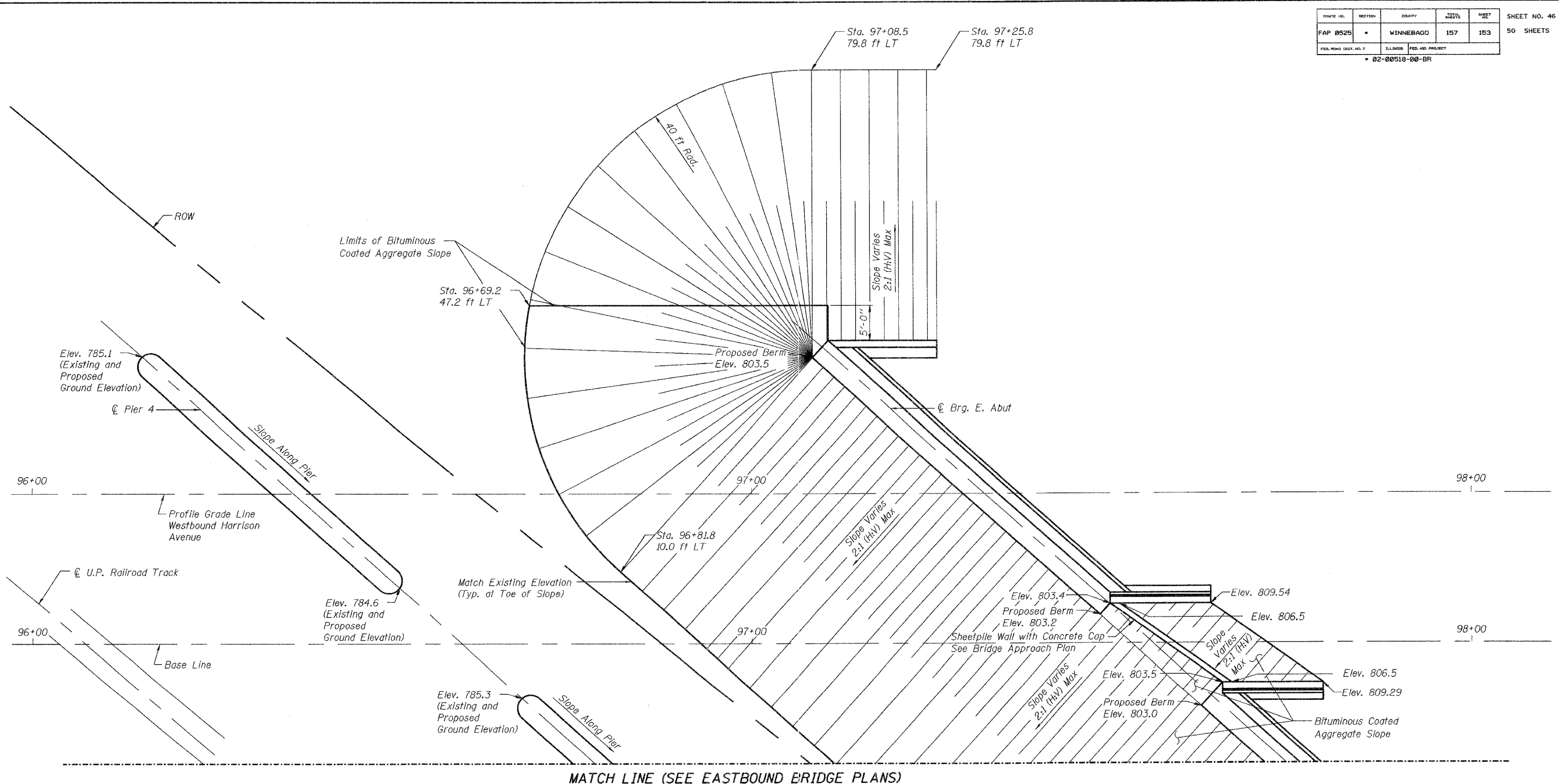


ROUTE NO.	SECTION	COUNTY	TOTAL SHEETS	SHEET	SHEET NO. 46 50 SHEETS
FAP 0525		WINNEBAGO	157	153	
FED. ROAD DIST. NO. 7	ILLINOIS	FED. AID PROJECT			
* 02-00518-00-BR					

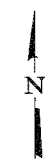


MATCH LINE (SEE EASTBOUND BRIDGE PLANS)

PLAN

NOTES

Stationing and offset defined with respect to the Base Line



Corporate License Number 184-001-084

EAST SLOPEWALL

WESTBOUND HARRISON AVENUE
OVER UP & CC&P RAILROAD
F.A.P. ROUTE 0525
SECTION 02-00518-00-BR
ROCKFORD, ILLINOIS
STATION 95+25.35
STRUCTURE NO. 101-6109

© Copyright Hanson Professional Services Inc. 2006



JOB NO.
03R1751
DATE
12/14/06

11/29/06 AM 12/12/2006 11:59 AM
 I:\03\05\03R1751\Struct\Sheet\Westbound\02-00518-00-BR-EastSlopedWall.dgn
 LAYOUT: JFR 07/07/06
 DRAWN: JFR 07/17/06
 REVIEWED: FLN 09/02/06