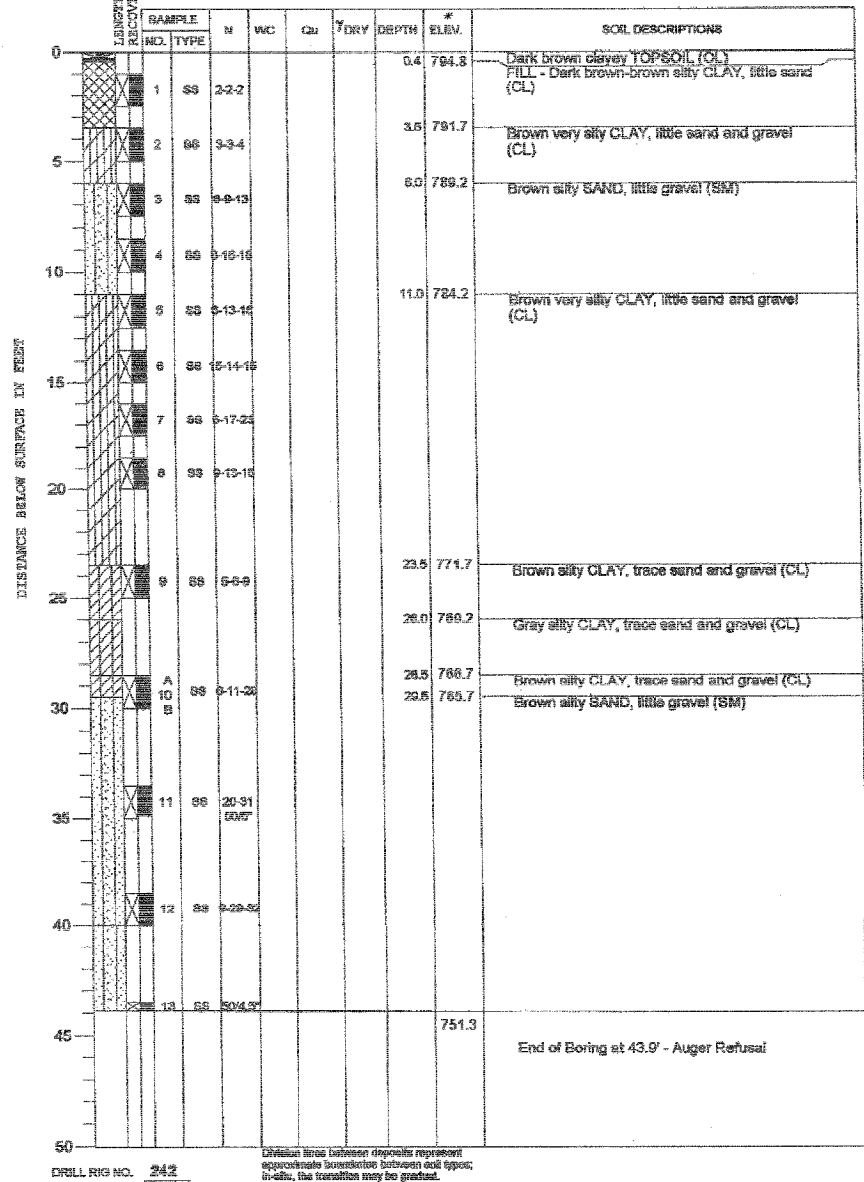


ROUTE NO.	SECTION	COUNTY	TOWNSHIP	RANGE	SHEET
FAP 0525	*	WINNEBAGO	157	155	50 SHEETS
FED. ROAD DIST. NO. 7 ILLINOIS FED. AID PROJECT					
* 02-00518-00-BR					

PROJECT **Harrison Avenue Bridge over UP and CN Railroads, Rockford, Illinois**
 CLIENT **Hanson Professional Services, Inc., 1525 S. Sixth St., Springfield, IL 62703**
 BORING **B-1** DATE STARTED **3-4-04** DATE COMPLETED **3-4-04** JOB **L-59,708**



ELEVATIONS		WATER TABLE	
GROUND SURFACE	795.2 *	WHILE DRILLING	DRY
END OF BORING	751.3 *	AT END OF BORING	DRY
		24 HOURS	

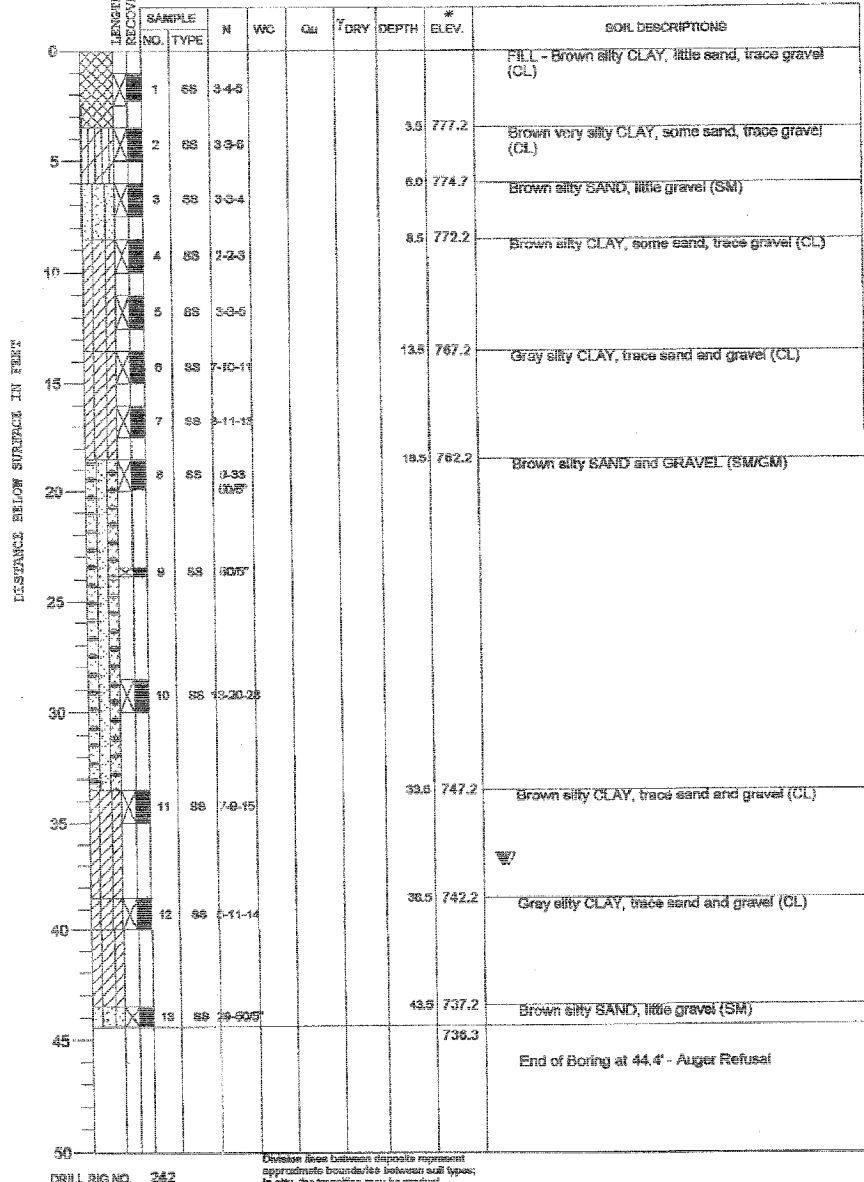


BORING LOG #1

PROJECT **Harrison Avenue Bridge over UP and CN Railroads, Rockford, Illinois**
 CLIENT **Hanson Professional Services, Inc., 1525 S. Sixth St., Springfield, IL 62703**
 BORING **B-2** DATE STARTED **3-2-04** DATE COMPLETED **3-2-04** JOB **L-59,708**



ELEVATIONS		WATER TABLE	
GROUND SURFACE	780.7 *	WHILE DRILLING	37'
END OF BORING	736.3 *	AT END OF BORING	37'
		24 HOURS	37'



BORING LOG #2

* - All elevations provided by Hanson Professional Services Inc.

1-16-06 PM
 12/3/2006 01:46 PM
 I:\03\Jobs\0317151\Struct\Steel\Weir\Boring\02-00518-00-BR-01.dgn

LAYOUT	05/20/05
DRAWN	09/06/05
REVIEWED	08/02/06

Corporate License Number 184-001-084

BORING LOGS #1 & #2

**WESTBOUND HARRISON AVENUE
 OVER UP & CC&P RAILROAD
 F.A.P. ROUTE 0525
 SECTION 02-00518-00-BR
 ROCKFORD, ILLINOIS
 STATION 95+25.35
 STRUCTURE NO. 101-6109**

© Copyright Hanson Professional Services Inc. 2006



JOB NO.
03R1751
DATE
12/14/06