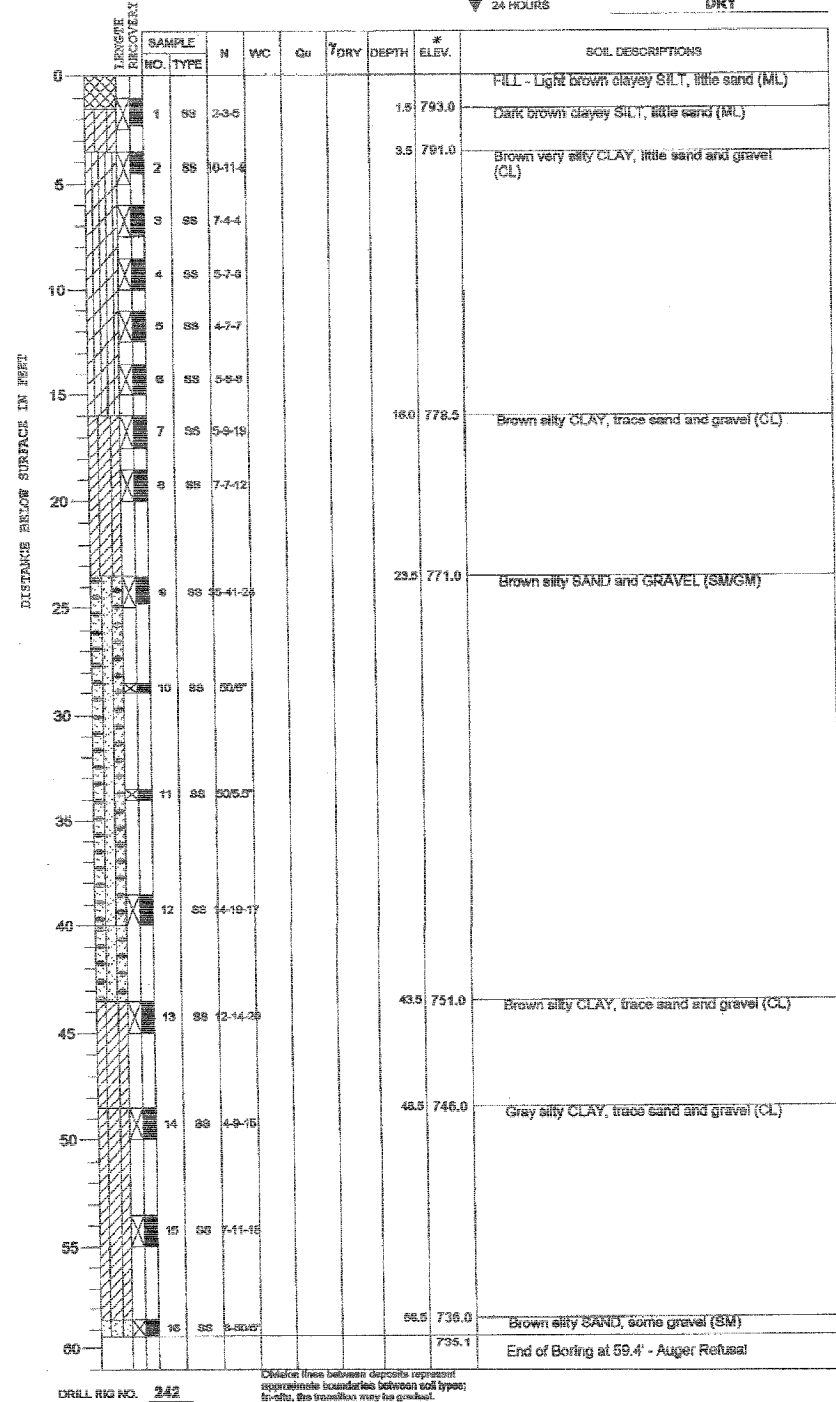


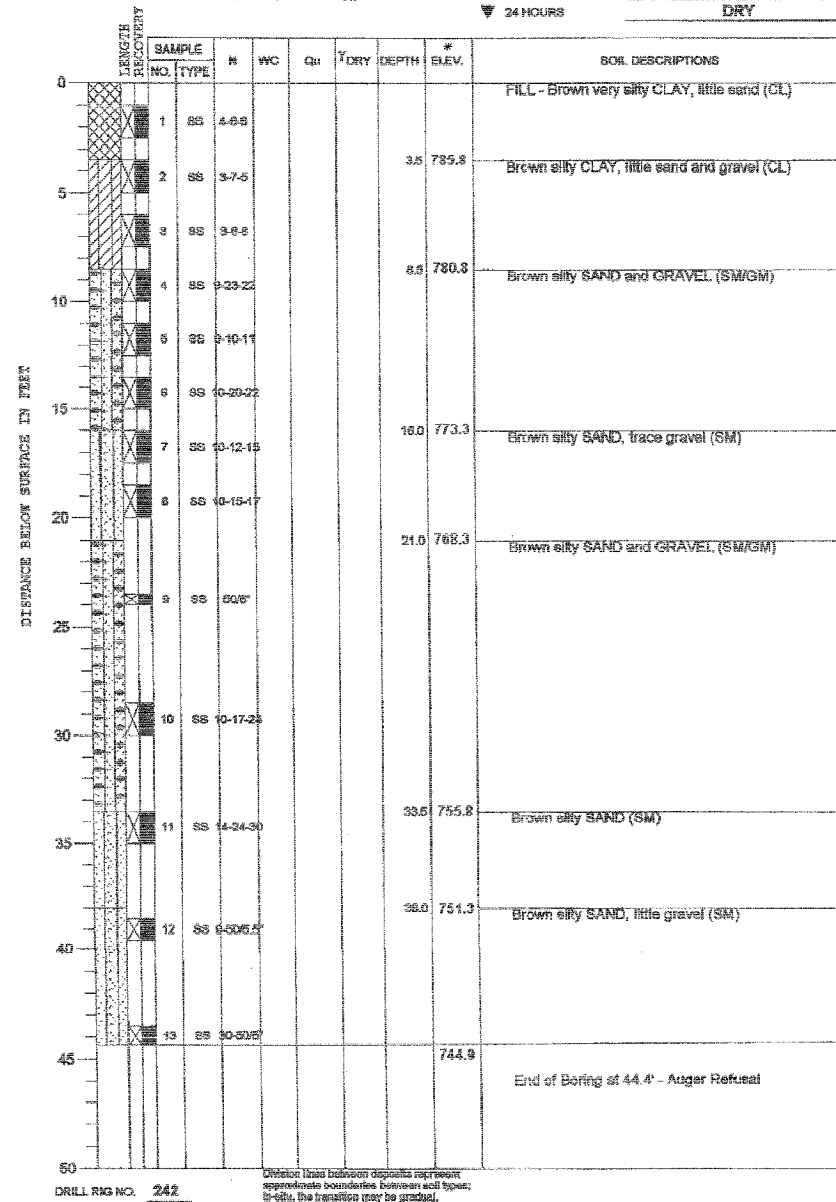
ROUTE NO.	SECTION	COUNTY	DATE	SHEET	SHEET NO. 49 50 SHEETS
FAP 0525	*	WINNEBAGO	157	156	
FED. ROAD DIST. NO. 7		ILLINOIS	FED. AID PROJECT		
* 02-00518-00-BR					

PROJECT **Harrison Avenue Bridge over UP and CN Railroads, Rockford, Illinois**
 CLIENT **Hanson Professional Services, Inc., 1525 S. Sixth St., Springfield, IL 62703**
 BORING **B-3** DATE STARTED **3-2-04** DATE COMPLETED **3-2-04** JOB **L-59,708**
 ELEVATIONS
 GROUND SURFACE **794.5 *** WATER TABLE **DRY**
 END OF BORING **735.1 *** WHILE DRILLING **DRY**
 AT END OF BORING **DRY**
 24 HOURS **DRY**



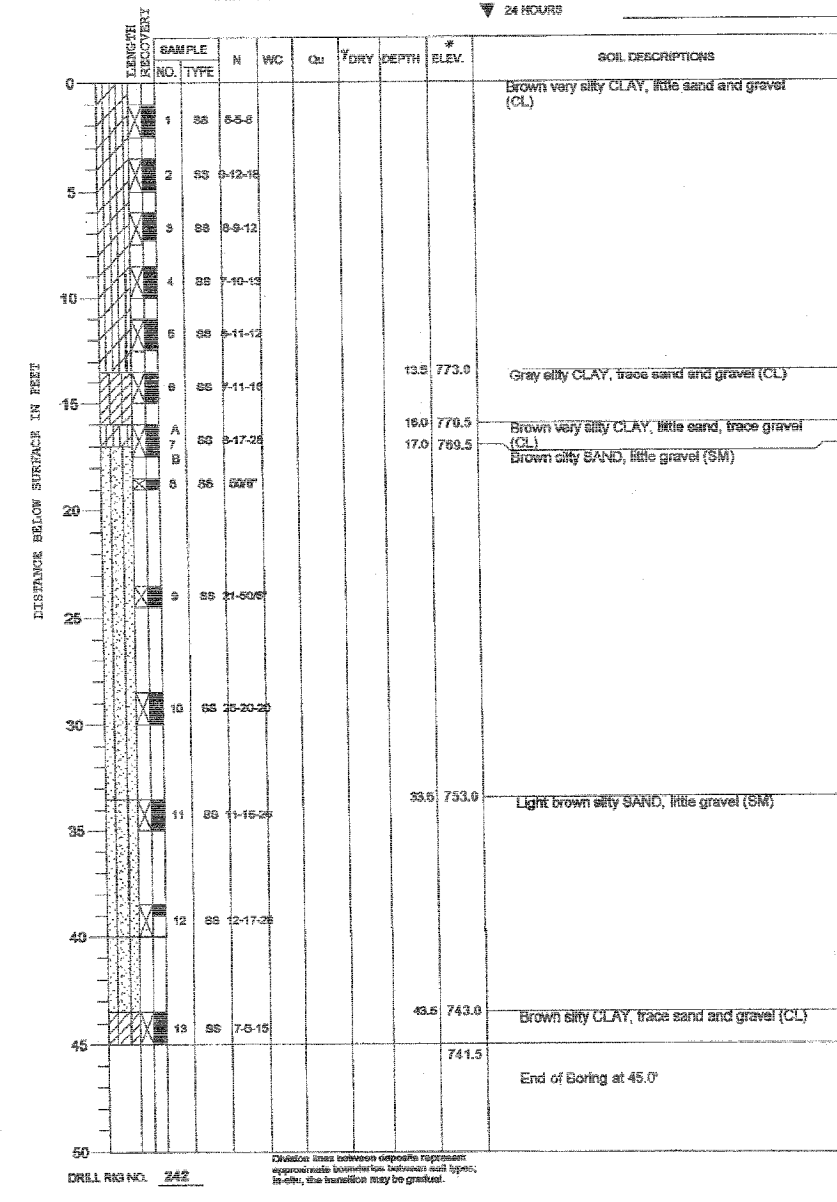
BORING LOG #3

PROJECT **Harrison Avenue Bridge over UP and CN Railroads, Rockford, Illinois**
 CLIENT **Hanson Professional Services, Inc., 1525 S. Sixth St., Springfield, IL 62703**
 BORING **B-4** DATE STARTED **3-3-04** DATE COMPLETED **3-3-04** JOB **L-59,708**
 ELEVATIONS
 GROUND SURFACE **789.3 *** WATER TABLE **DRY**
 END OF BORING **744.9 *** WHILE DRILLING **DRY**
 AT END OF BORING **DRY**
 24 HOURS **DRY**



BORING LOG #4

PROJECT **Harrison Avenue Bridge over UP and CN Railroads, Rockford, Illinois**
 CLIENT **Hanson Professional Services, Inc., 1525 S. Sixth St., Springfield, IL 62703**
 BORING **B-5** DATE STARTED **3-4-04** DATE COMPLETED **3-4-04** JOB **L-59,708**
 ELEVATIONS
 GROUND SURFACE **795.5 *** WATER TABLE **DRY**
 END OF BORING **741.5 *** WHILE DRILLING **DRY**
 AT END OF BORING **DRY**
 24 HOURS **DRY**



BORING LOG #5

11/7/05 PM
 I:\03\006\0147.PK
 I:\03\006\0147\Struct\Sheet\Wor\Borings\049\WB-5B-2.dgn

LAYOUT 05/23/05
 DRAWN 03/07/05
 REVISION 03/07/05

* - All elevations provided by Hanson Professional Services Inc.

Corporate License Number 184-001-084

BORING LOGS #3, #4 & #5

**WESTBOUND HARRISON AVENUE
 OVER UP & CC&P RAILROAD
 F.A.P. ROUTE 0525
 SECTION 02-00518-00-BR
 ROCKFORD, ILLINOIS
 STATION 95+25.35
 STRUCTURE NO. 101-6109**

© Copyright Hanson Professional Services Inc. 2006



JOB NO.
03R1751
DATE
12/14/06