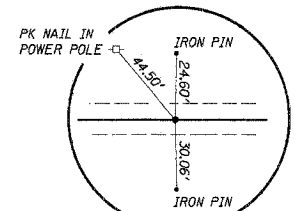
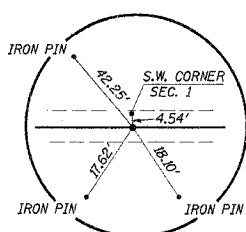


CARY PENCE

S.W. 1/4, S.W. 1/4, SECTION 1, T. 26 N., R. 14 W., 2ND P.M. LAWRENCE J. & MARY LEE McTAGGARD

ROUTE	SECTION	COUNTY	TOTAL SHEETS	SHEET NO.
T.R. 189	01-1127	ILLINOIS	20	3
STA. 10+00 TO STA. 20+96.30		ILLINOIS	DOUGLAS	CONTRACT NO. 87287

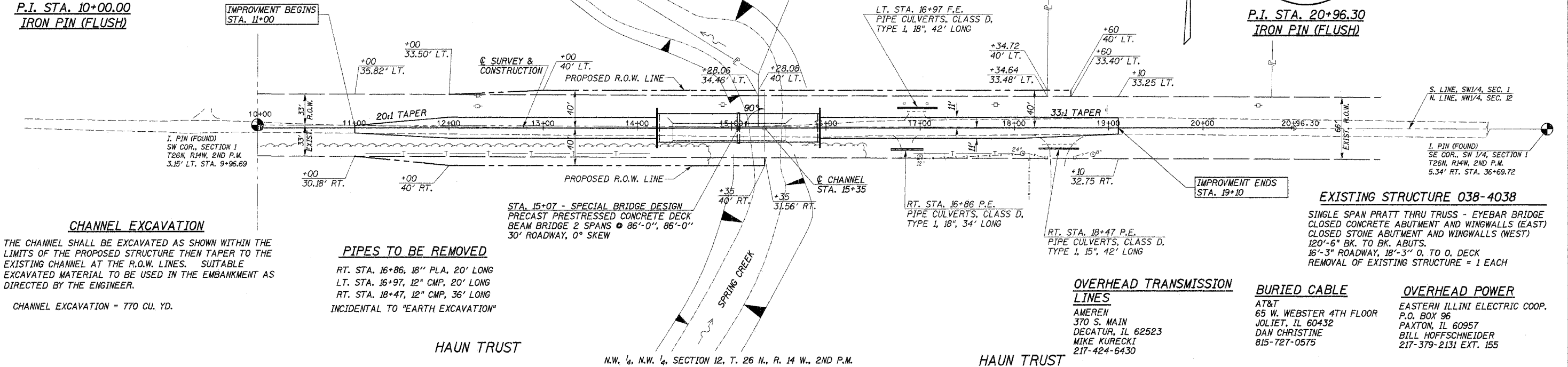


ENTRANCES TO BE BUILT

RT. STA. 16+86, P.E. -0.6%, 20' ROADBED
 LT. STA. 16+97, F.E. +11.0%, 28' ROADBED
 RT. STA. 18+47, P.E. +3.0%, 28' ROADBED
 QUANTITIES INCLUDED IN THOSE LISTED

P.I. STA. 10+00.00
IRON PIN (FLUSH)

P.I. STA. 20+96.30
IRON PIN (FLUSH)



CHANNEL EXCAVATION
 THE CHANNEL SHALL BE EXCAVATED AS SHOWN WITHIN THE LIMITS OF THE PROPOSED STRUCTURE THEN TAPER TO THE EXISTING CHANNEL AT THE R.O.W. LINES. SUITABLE EXCAVATED MATERIAL TO BE USED IN THE EMBANKMENT AS DIRECTED BY THE ENGINEER.
 CHANNEL EXCAVATION = 770 CU. YD.

PIPES TO BE REMOVED
 RT. STA. 16+86, 18" PLA, 20' LONG
 LT. STA. 16+97, 12" CMP, 20' LONG
 RT. STA. 18+47, 12" CMP, 36' LONG
 INCIDENTAL TO "EARTH EXCAVATION"

OVERHEAD TRANSMISSION LINES
 AMEREN
 370 S. MAIN
 DECATUR, IL 62523
 MIKE KURECKI
 217-424-6430

BURIED CABLE
 AT&T
 65 W. WEBSTER 4TH FLOOR
 JOLIET, IL 60432
 DAN CHRISTINE
 815-727-0575

OVERHEAD POWER
 EASTERN ILLINOIS ELECTRIC COOP.
 P.O. BOX 96
 PAXTON, IL 60957
 BILL HOFFSCHNEIDER
 217-379-2131 EXT. 155

DATE	
BY	
PLAN	
DATE	
BY	
PROFILE	
DATE	
BY	

DATE	
BY	
PROFILE	
DATE	
BY	

