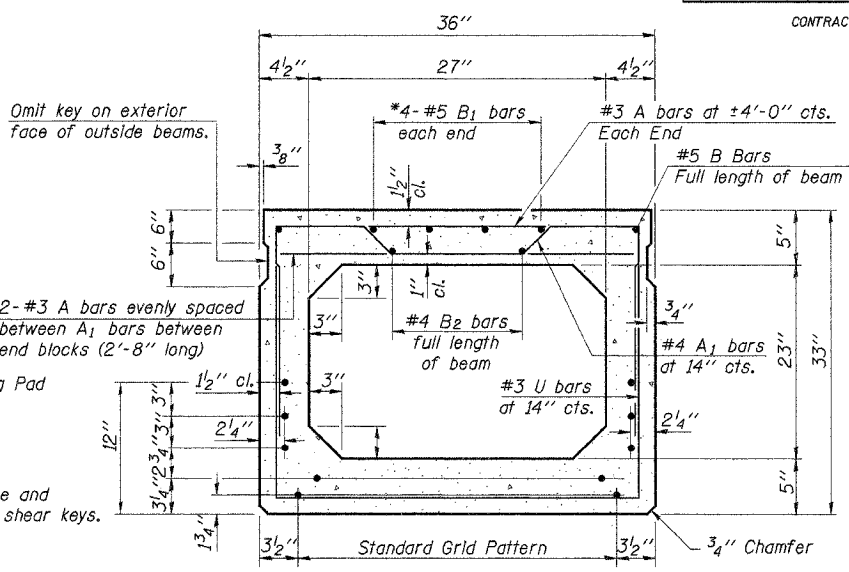
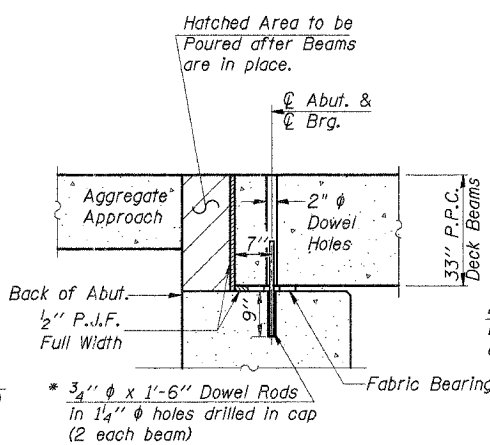
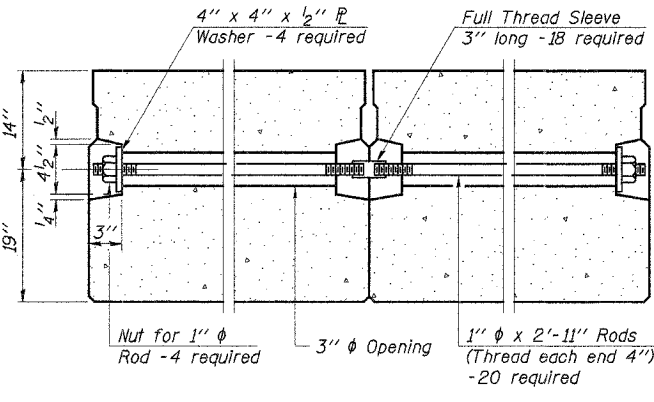
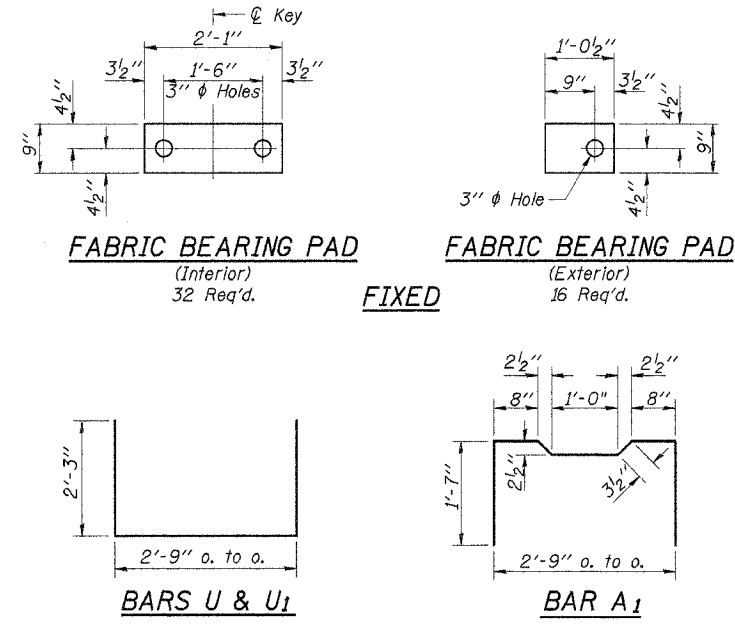


ROUTE NO.	SECTION	COUNTY	TOTAL SHEETS	SHEET NO.
T.R. 189	01-11127-00-BR	IROQUOIS	20	5
ROAD DIST.	ILLINOIS	DOUGLAS		

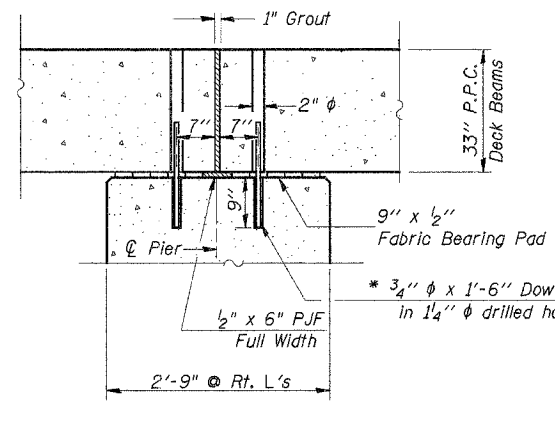
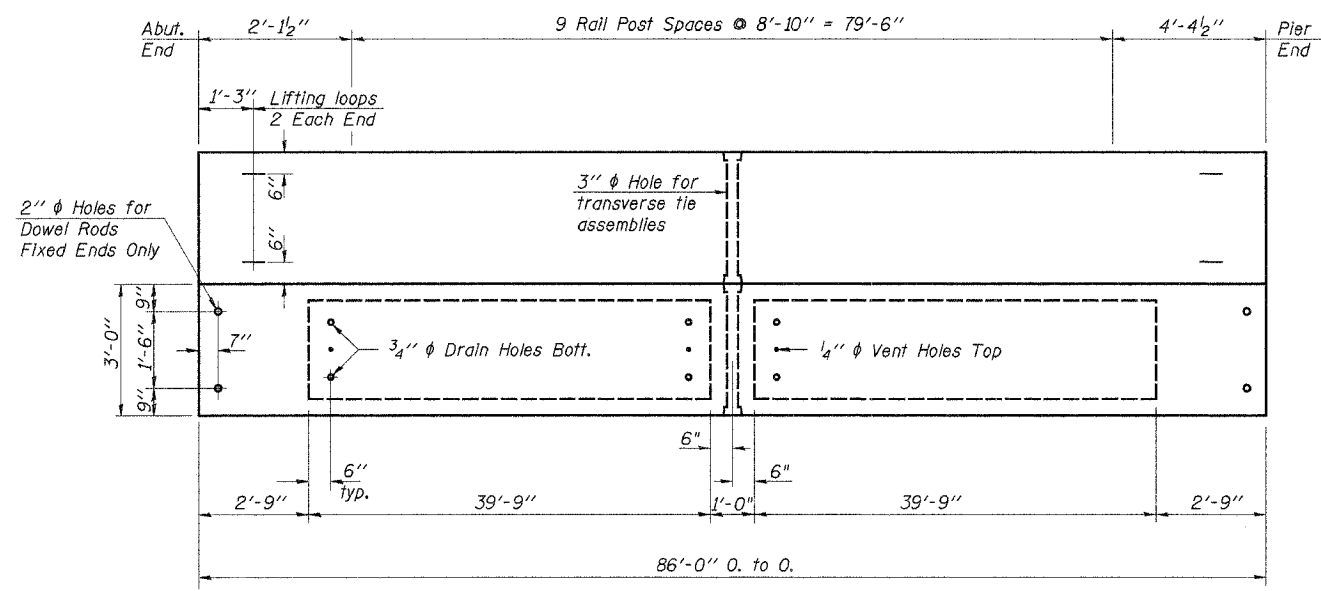
CONTRACT NO. 87287

\*0.2 x Length of beam (17'-3")

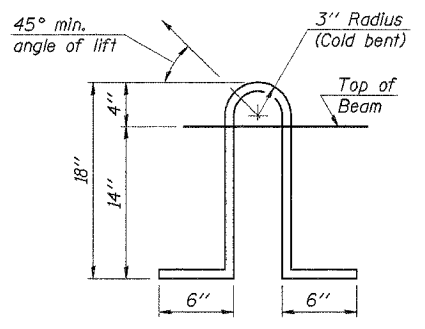
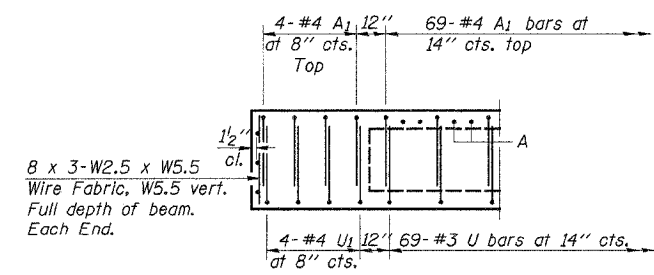
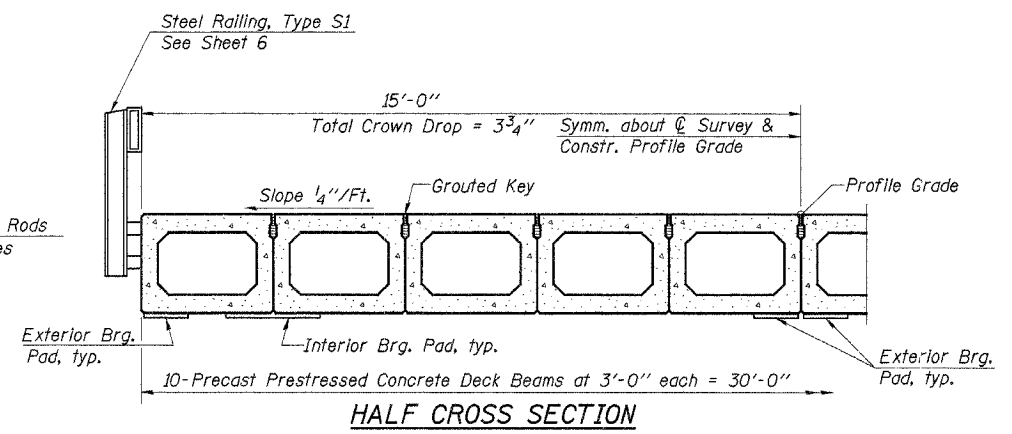


Note: Place strands symmetrically about center of beam.

19-1/2" φ Strands Each Strand Stressed to 30,900 Lbs.  
7-Strands 1 3/4" up, 6-Strands 3/4" up, 2-Strands 6" up,  
2-Strands 9" up, 2-Strands 12" up



\* Note: After beams are in place, 1/4" holes shall be drilled into the Substructure, and the dowel rods grouted in place and allowed to cure (Min. 24 Hrs.) prior to grouting shear key.



**NOTES**

Prestressing steel shall be uncoated high strength, low relaxation 7-wire strand, Grade 270. The nominal diameter shall be 1/2" and the nominal cross-sectional area shall be 0.153 sq. in. Lifting loops shall be 3-1/2" φ-270 ksi strands, as shown. The 1" φ rods in the transverse tie assembly shall be tightened to a snug fit and the threads set. Pockets that receive transverse tie bar on outside shall be filled with grout after transverse tie assembly is in place. Non prestressing steel shall conform to AASHTO M-31, M-42 or M-53 Grade 60. The bearing seat surfaces shall be adjusted by shimming to assure firm and even bearing. Two 1/8" fabric adjusting shims of the dimensions of the Exterior Bearing Pad shall be provided for each bearing. (96 Req'd.) Keyway surfaces shall be cleaned to remove form oil or other bond breaking material prior to shipment of the beams. Cleaning shall be done by sandblasting the keyway areas between top of the beam and the bottom edge of the key. Corrosion Inhibitor, as covered in the Special Provisions, shall be used in the concrete for precast prestressed concrete deck beams. Required Release Strength, f'ci, shall be 4,000 p.s.i. See Special Provisions for review and distribution of shop drawings.

**BILL OF MATERIAL**

Item	Unit	Quantity
Precast Prestressed Concrete Deck Beams (33" Depth)	Sq. Ft.	5160

Estimated Total Weight (One Beam) = 59,100 Pounds

DESIGNED	SFM
CHECKED	FJS
DRAWN	SAP
CHECKED	SFM

PD-5-S 9-1-03

**SUPERSTRUCTURE SPANS 1 & 2**  
SECTION 01-11127-00-BR  
DOUGLAS ROAD DISTRICT  
IROQUOIS COUNTY  
STA. 15+07

4440 ASH GROVE  
SPRINGFIELD, IL 62711  
(217) 793-8600  
www.fehr-graham.com

**FEHR-GRAHAM & ASSOCIATES, LLC**  
ENGINEERING AND SCIENCE CONSULTANTS  
FREDERICK, ILLINOIS

JOB NO.: 46816  
FILE: SUPER.DGN  
DATE: 10/06/06