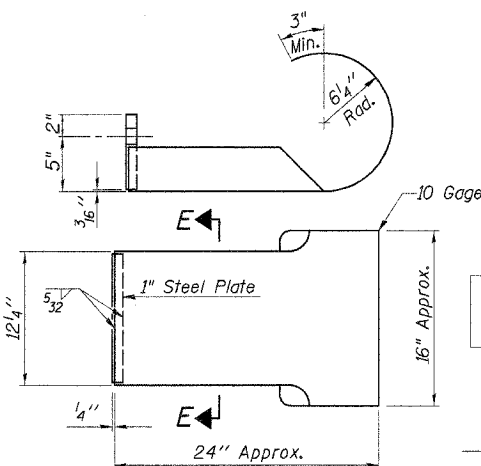
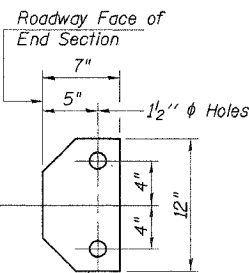


ROUTE NO.	SECTION	COUNTY	TOTAL SHEETS	SHEET NO.
T.R. 189	01-11127-00-BR	IROQUOIS	20	6
ROAD DIST.	ILLINOIS	DOUGLAS		

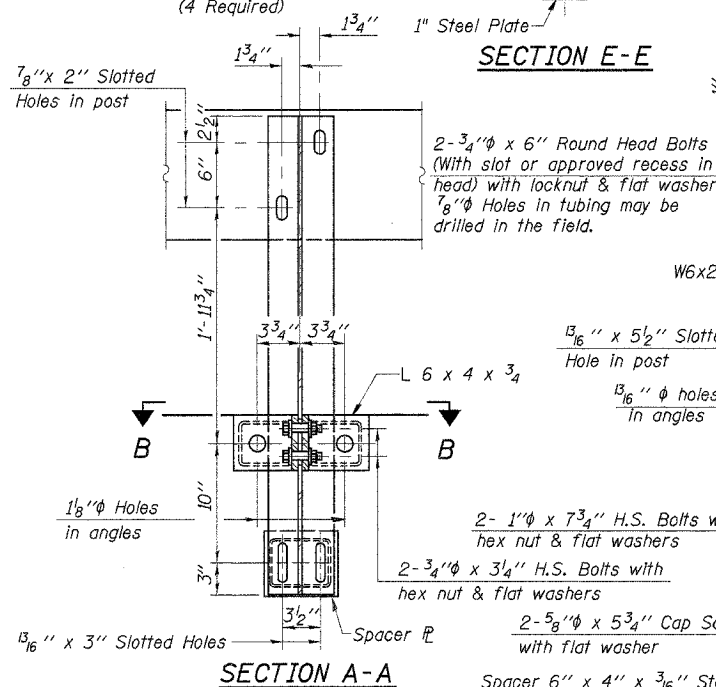
CONTRACT NO. 87287



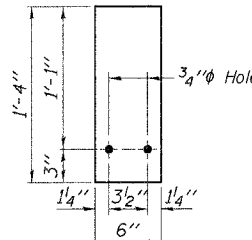
CURLLED END SECTION DETAILS
(4 Required)



SECTION E-E



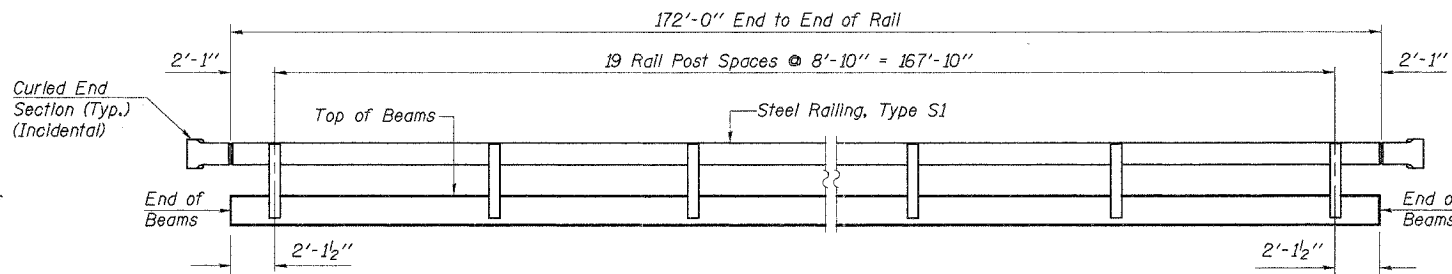
SECTION A-A



1/4" SHIM PLATE

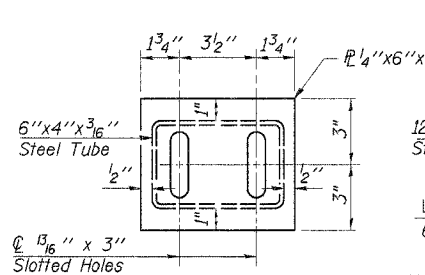
Note: For multi-span bridges, sufficient 1/4" x 6" x 1'-4" galvanized steel shims shall be provided to align rail between adjacent spans. Cost Incidental to Steel Railing.

DESIGNED	SFM
CHECKED	FJS
DRAWN	SAP
CHECKED	SFM

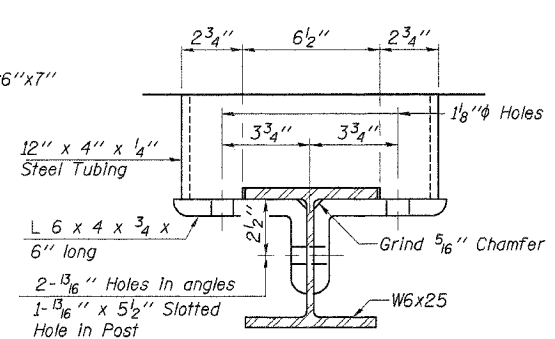


ELEVATION

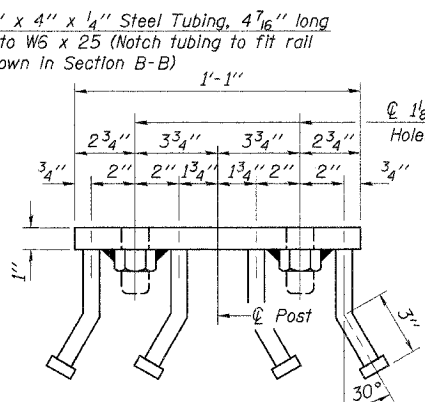
Showing Inside Face of Rail



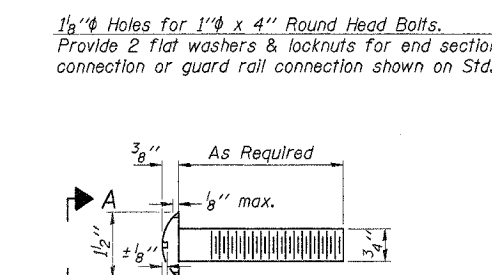
DETAIL "D"



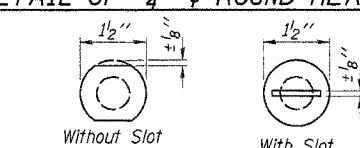
SECTION B-B



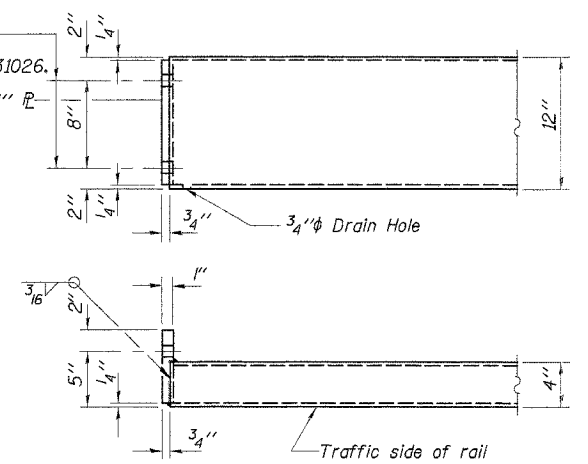
VIEW C-C



DETAIL OF 3/4" ROUND HEAD BOLT



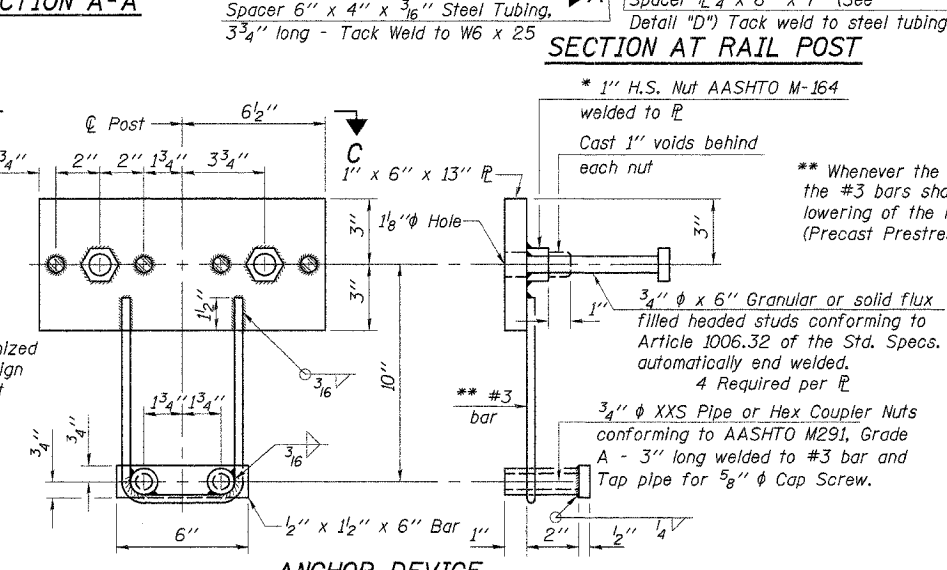
VIEW A-A



END OF RAIL DETAILS

BILL OF MATERIAL

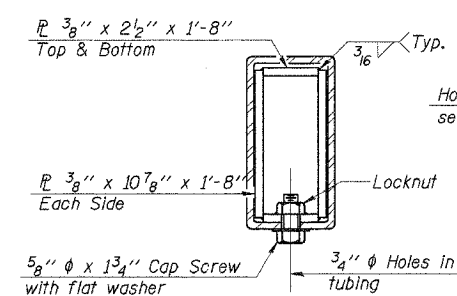
Item	Unit	Quantity
Steel Railing, Type S1	Foot	344



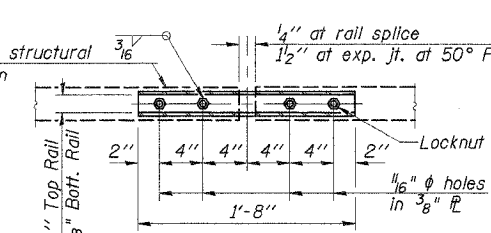
ANCHOR DEVICE

* Threaded areas shall be plugged or blocked off during casting of beam.

** Whenever the lower insert assemblies interfere with strand locations, the #3 bars shall be cut and adjusted in order to allow raising or lowering of the lower Inserts. Maximum adjustment not to exceed 1/2". (Precast Prestressed Concrete Deck Beam Bridges Only)



SECTIONS AT RAIL SPLICE



PLAN-BOTT. SPLICE TYPICAL

STEEL RAILING, TYPE S1
SECTION 01-11127-00-BR
DOUGLAS ROAD DISTRICT
IROQUOIS COUNTY
STA. 15+07

4440 ASH GROVE
SPRINGFIELD, IL 62711
(217) 793-8600
www.fehr-graham.com

FEHR-GRAHAM & ASSOCIATES, LLC
ENGINEERING AND SCIENCE CONSULTANTS
PREPARED BY: ROBERT D. ROQUELLE, P.E.
REGISTERED PROFESSIONAL ENGINEER, ILL.

JOB NO.: 46816
FILE: RAIL_S1.DGN
DATE: 10/06/06