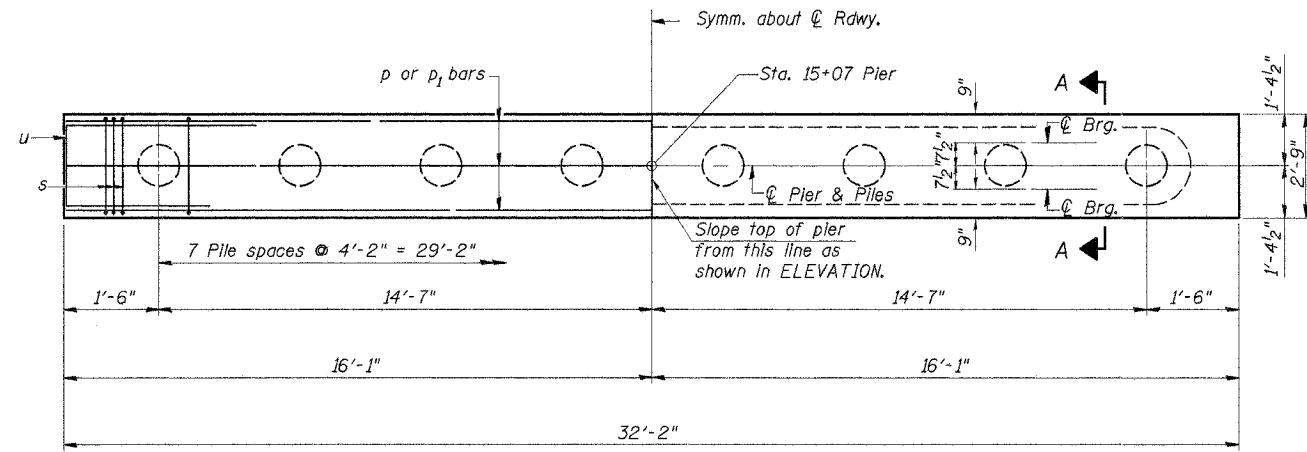
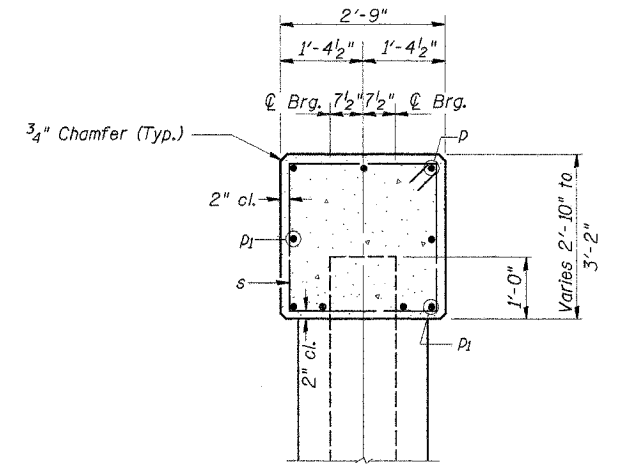
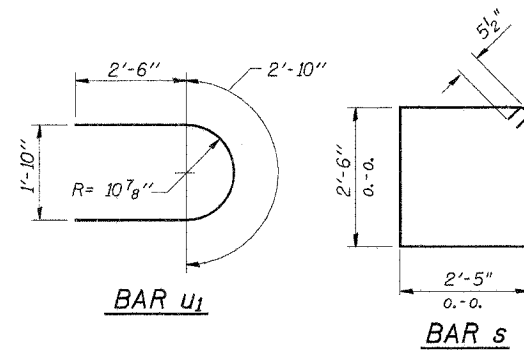


ROUTE NO.	SECTION	COUNTY	TOTAL SHEETS	SHEET NO.
T.R. 189	01-11127-00-BR	IROQUOIS	20	8
ROAD DIST.	ILLINOIS	DOUGLAS		

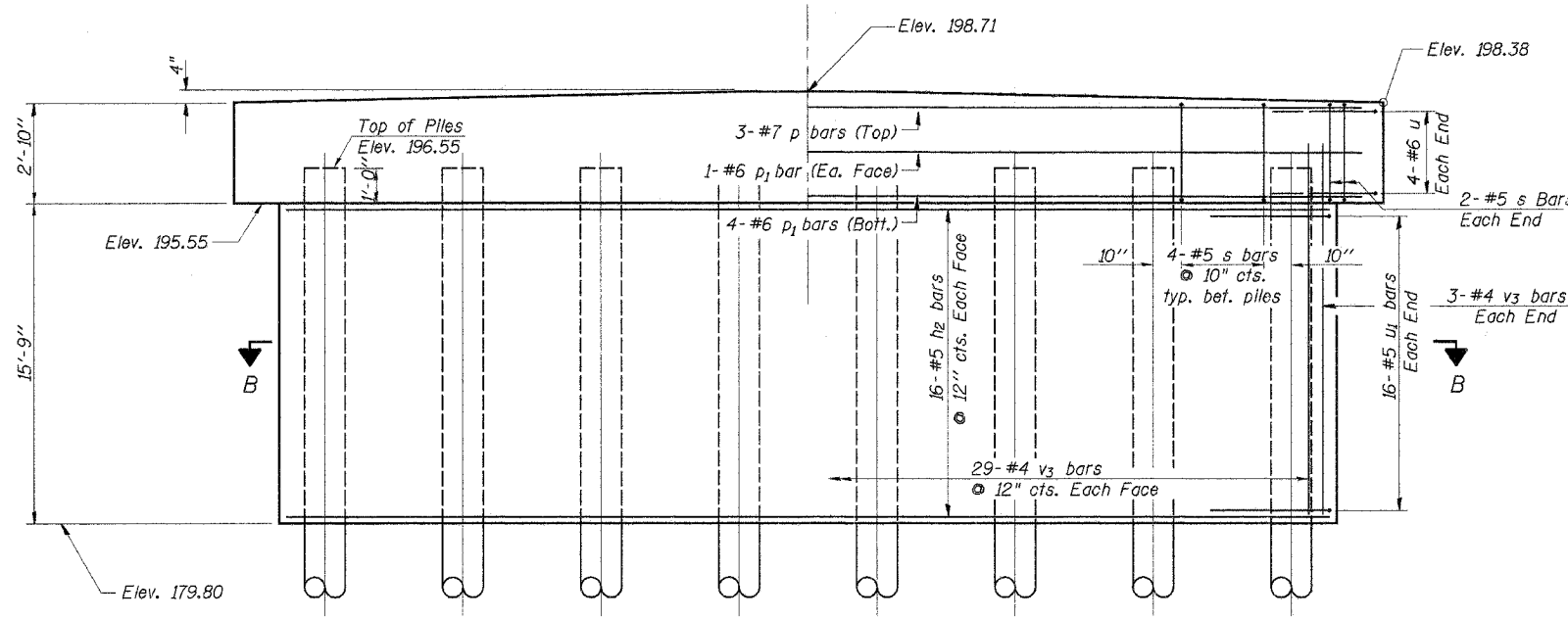
CONTRACT NO. 87287



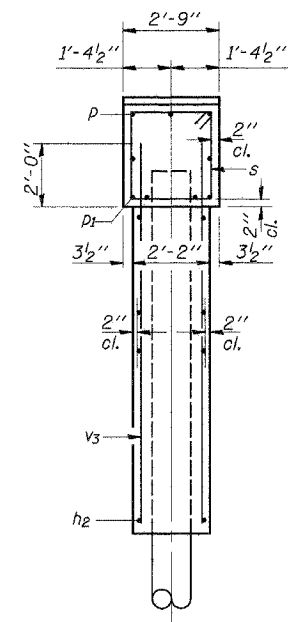
PLAN



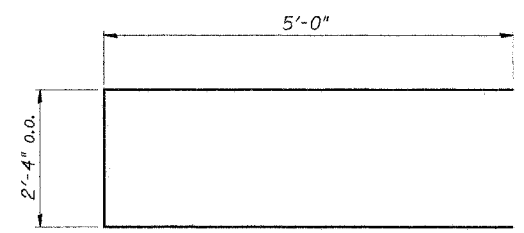
SECTION A-A
(At Right Angles)



ELEVATION



END VIEW



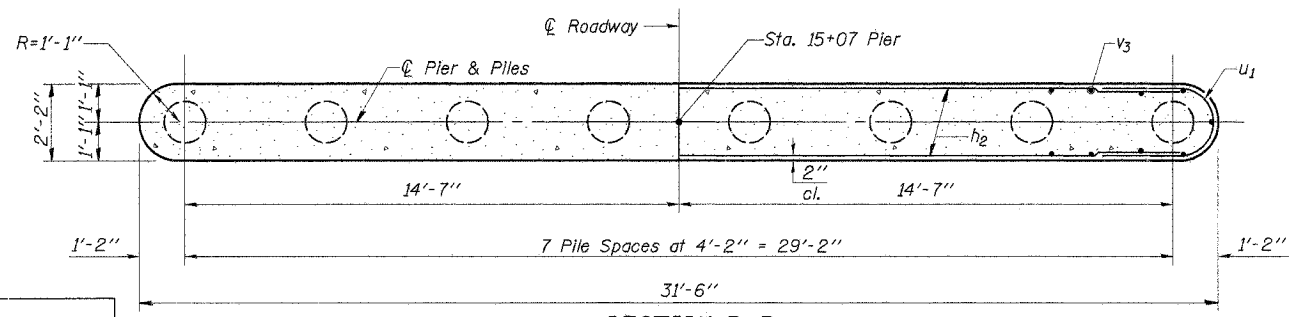
BAR u

BILL OF MATERIAL

BAR	NO.	SIZE	LENGTH	SHAPE
h2	32	#5	29'-4"	—
p	3	#7	31'-10"	—
p1	6	#6	31'-10"	—
s	32	#5	10'-9"	□
u	8	#6	12'-4"	—
u1	32	#5	7'-10"	U
v3	64	#4	17'-7"	—

Concrete Structures	Cu. Yd.	43.8
Reinforcement Bars	Pound	2980
Metal Shell Piles 14"	Foot	525
Test Pile Metal Shells 14"	Each	1

See Sheet 9 for Pile Details



SECTION B-B

PILE DATA

Type & Size..... Metal Shell - 14 In. Dia. x 0.250 In. walls
 No. Req'd..... *8
 Nominal Required Bearing..... 390 kips
 Allowable Resistance Available..... 130 kips
 Estimated Length..... 75 ft.

*Includes 1 Test Pile to be driven in a permanent location at the pier.
 The test piles shall be driven to 110 percent of the Nominal Required Bearing Indicated above.

DESIGNED	SFM
CHECKED	FJS
DRAWN	SAP
CHECKED	SFM

PIER
 SECTION 01-11127-00-BR
 DOUGLAS ROAD DISTRICT
 IROQUOIS COUNTY
 STA. 15+07

4440 ASH GROVE
 SPRINGFIELD, IL 62711
 (217) 783-8600
 www.fehr-graham.com

FEHR-GRAHAM & ASSOCIATES, LLC
 ENGINEERING AND SCIENCE CONSULTANTS
 FREDERICK, ILLINOIS, IROQUOIS, MISSOURI, SPRINGFIELD, ILLINOIS

JOB NO.: 46816
 FILE: PIERS.DGN
 DATE: 12/08/06