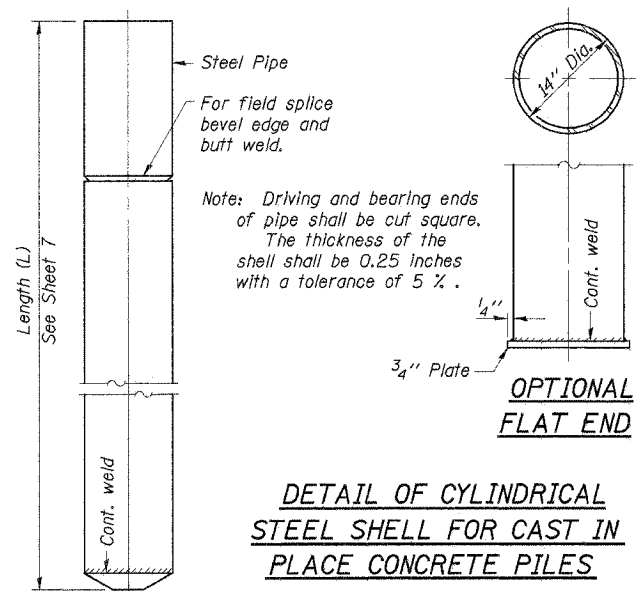
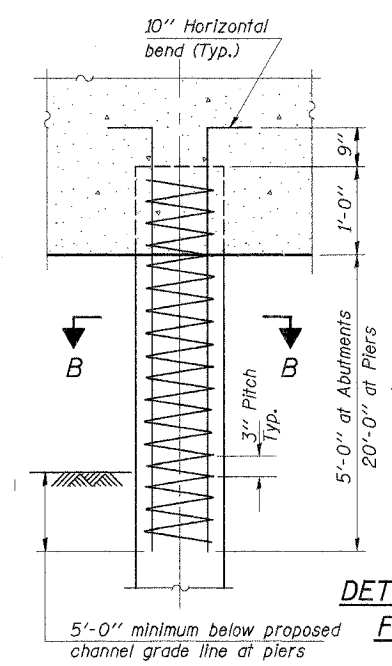


ROUTE NO.	SECTION	COUNTY	TOTAL SHEETS	SHEET NO.
C.H. 4	04-00034	IROQUOIS	16	9
F.A.S. 321	-04-BR			
ROAD DIST.	ILLINOIS	PROJ NO. BRS-321(113)		
CONTRACT NO. 87299				

Note: The shell shall be in accordance with ASTM A 252 Grade 3.



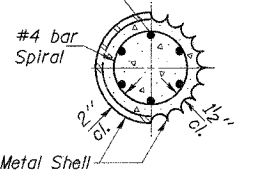
DETAIL OF CYLINDRICAL STEEL SHELL FOR CAST IN PLACE CONCRETE PILES



DETAIL OF REINFORCEMENT FOR METAL SHELLS

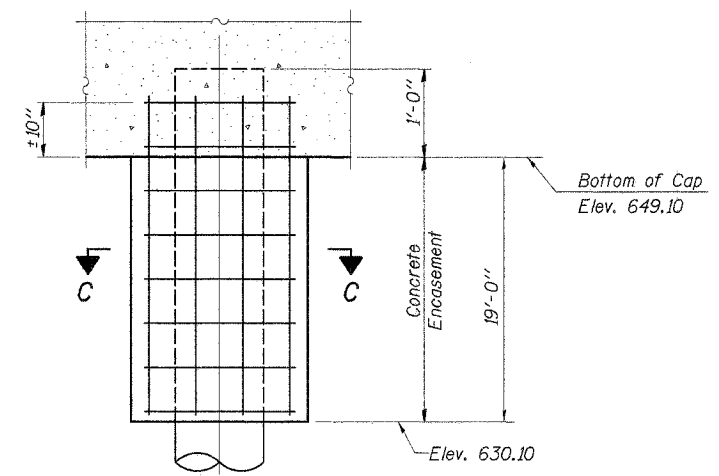
The cost of Reinforcement & Concrete is included in the cost of driving piles.

6-#5 bars 7'-7" long at Abuts.
6-#5 bars 22'-7" long at Piers

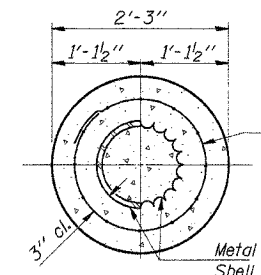


SECTION B-B

Reinforcement in top of pile shall be omitted under pier footings when placed in natural ground.



DETAIL OF METAL SHELL PILE ENCASEMENT AT PIERS



SECTION C-C

Welded wire fabric 6 x 6-W4.0 x W4.0 weighing 58#/100 sq. ft. The cost of welded wire fabric is included in the cost of concrete encasement.

BILL OF MATERIAL

Item	Unit	Quantity
Concrete Encasement	Cu. Yd.	20.5

DESIGNED	S.F.M.
CHECKED	F.J.S. & A.R.K.
DRAWN	S.A.P. & J.P.S.
CHECKED	S.F.M. & A.R.K.

PILE DETAILS

COUNTY HIGHWAY 4
SEC. 04-00034-04-BR
IROQUOIS COUNTY
STATION 139+05

4440 ASH GROVE SPRINGFIELD, IL 62711 (217) 793-8600 www.fehr-graham.com	FEHR-GRAHAM & ASSOCIATES, LLC ENGINEERING AND SCIENCE CONSULTANTS <small>PROFESSIONAL ENGINEERS REGISTERED IN ILLINOIS</small>	JOB NO.: 46817 FILE: 0403PILE.DGN DATE: 12/08/06
--	---	--