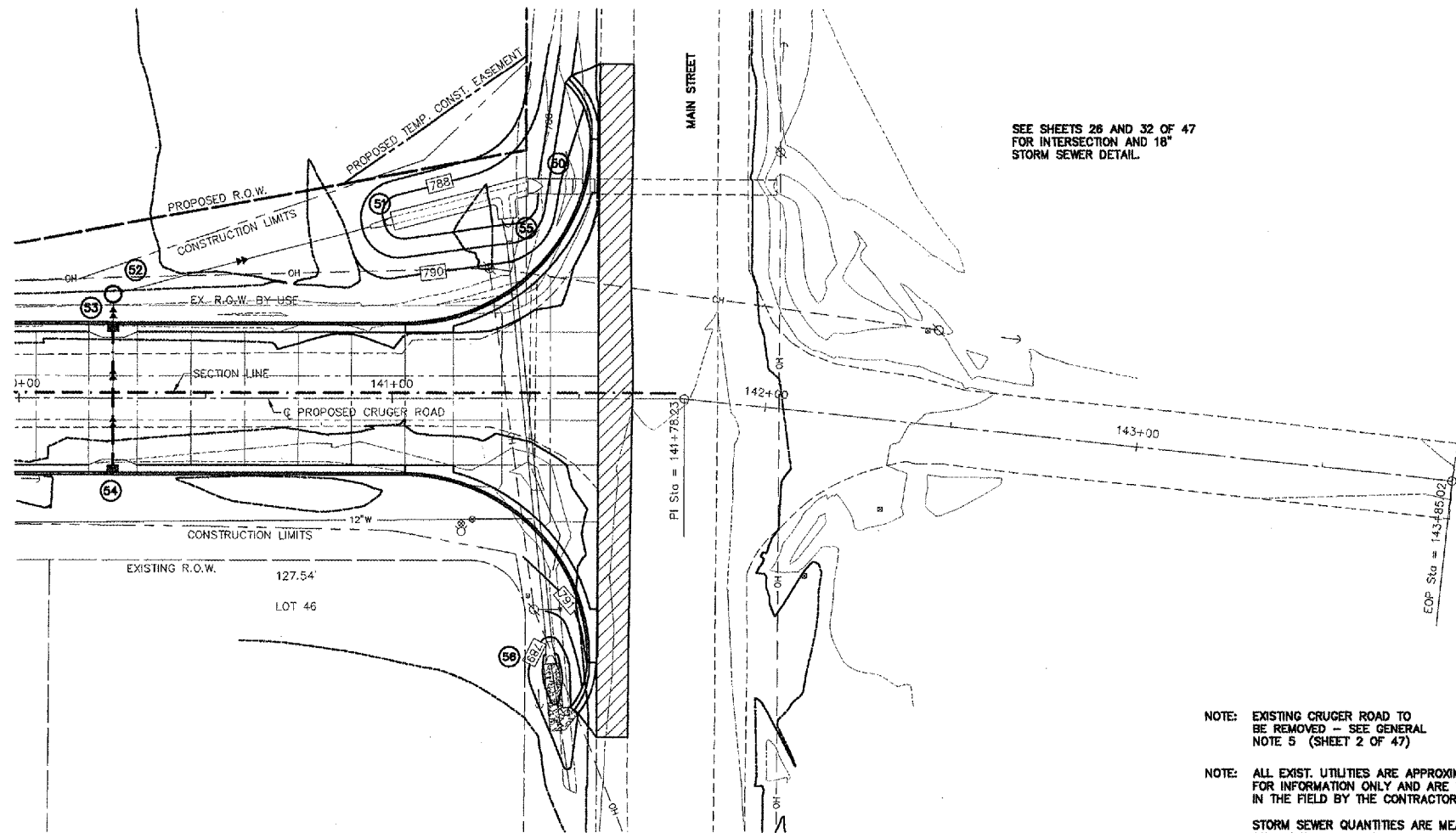


ROUTE NO.	DISTRICT	COUNTY	TOTAL SHEETS	SHEET NO.
F.A.U. 6737	*	TAZEWELL	47	14

PROJ. ROAD DIST. NO. 7 ALLEMAN PROJECT M-2063-110

*03-00089-02-PV
CONTRACT NO. 89349



SEE SHEETS 26 AND 32 OF 47
FOR INTERSECTION AND 18"
STORM SEWER DETAIL.

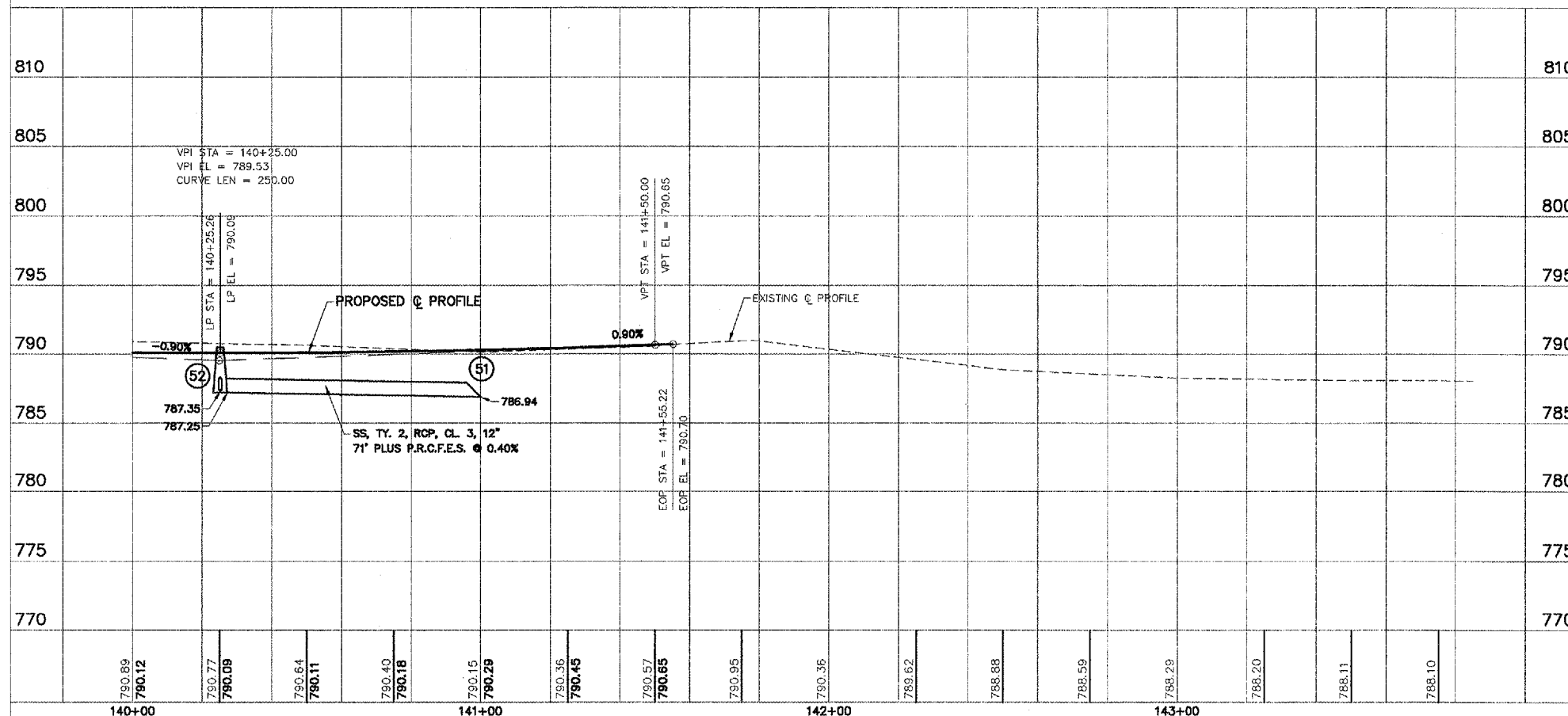
NOTE: EXISTING CRUGER ROAD TO
BE REMOVED - SEE GENERAL
NOTE 5 (SHEET 2 OF 47)

NOTE: ALL EXIST. UTILITIES ARE APPROXIMATE AND SHOWN
FOR INFORMATION ONLY AND ARE TO BE VERIFIED
IN THE FIELD BY THE CONTRACTOR.

STORM SEWER QUANTITIES ARE MEASURED FROM
CENTERLINE OF STRUCTURE TO CENTERLINE OF
STRUCTURE.



SCALES:
1" = 20' HOR
1" = 5' VER



- (50) SALVAGE & REINSTALL 4' x 2' PRECAST BOX CULVERT END SECTION INV. 786.75
- (51) PRECAST REINFORCED CONCRETE FLARED END SECTION, 12" 47.53' LT. STA. 141+00.00 INV. 786.94
- (52) MANHOLE, TYPE A, 4' DIA., WITH TYPE 1 FRAME, CLOSED LID 28.00' LT. STA. 140+25.26 TOP/CASTING 790.50 INV. 787.25 (12"NE) INV. 787.35 (12"S)
- (53) INLET, TYPE G-1 19.33' LT. STA. 140+25.26 TOP/CURB 790.19 EDGE/PAVT 787.48 (12"S) INV. 787.38 (12"N) INV. 787.48 (12"S)
- (54) INLET, TYPE G-1 19.33' RT. STA. 140+25.26 TOP/CURB 790.19 EDGE/PAVT 789.81 INV. 787.63 (12"N)
- (55) PRECAST REINFORCED CONCRETE FLARED END SECTION, 15" 48.16' LT. STA. 141+30.76 INV. 787.04
- (56) PRECAST REINFORCED CONCRETE FLARED END SECTION, 15" 71.25' RT. STA. 141+42.63 INV. 787.46
- (50) 4' x 2' PRECAST BOX CULVERT, M 273 12 FT. @ 0.50%
- (51)-(52) STORM SEWER, TYPE 2, RCCP, CLASS 3, 12" 71 FT. PLUS P.R.C.F.E.S. @ 0.40%
- (52)-(53) STORM SEWER, DUCTILE IRON, CLASS 50, 12" 8 FT. @ 0.40% TRENCH BACKFILL = 2 C.Y.
- (53)-(54) STORM SEWER, DUCTILE IRON, CLASS 50, 12" 38 FT. @ 0.40% TRENCH BACKFILL = 5 C.Y.
- (55)-(56) STORM SEWER, TYPE 2, RCCP, CLASS 3, 15" 108 FT. PLUS 2 P.R.C.F.E.S. @ 0.35% TRENCH BACKFILL = 13 C.Y.