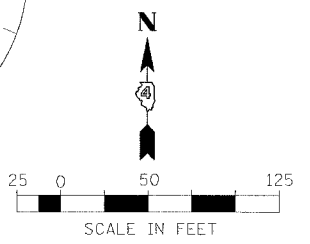
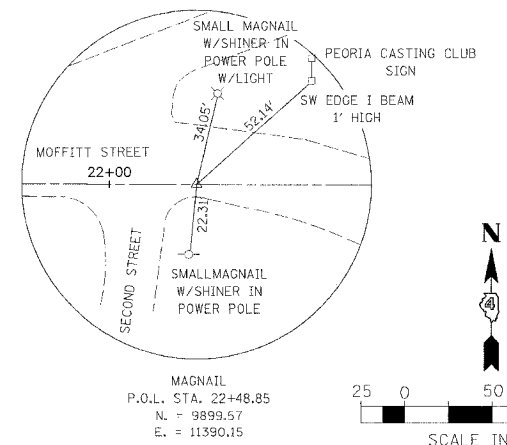
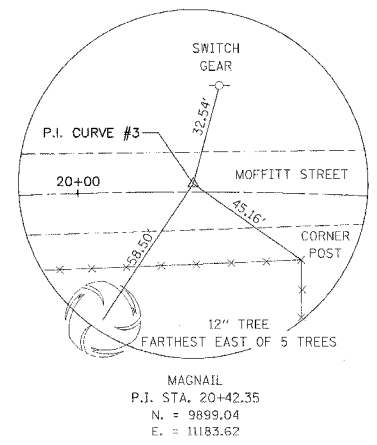
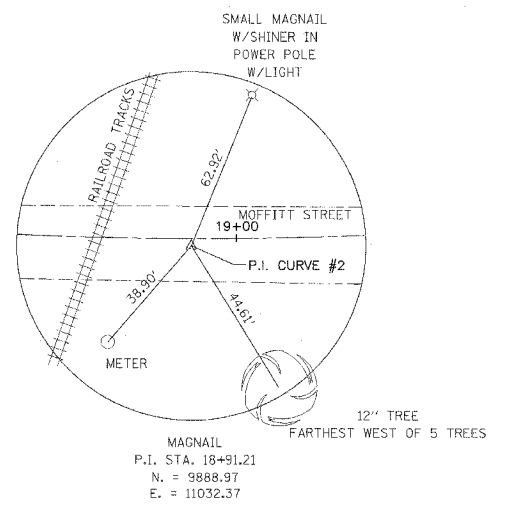
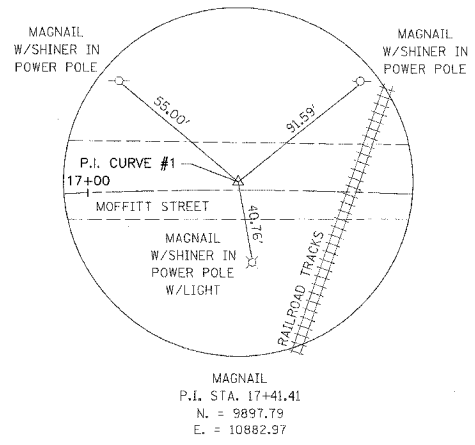
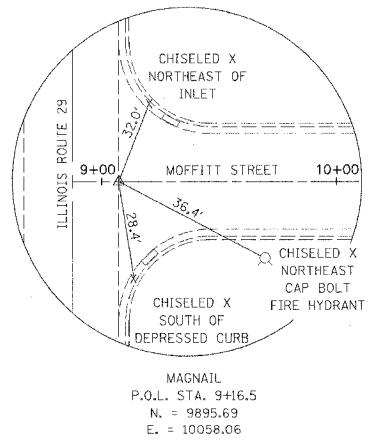
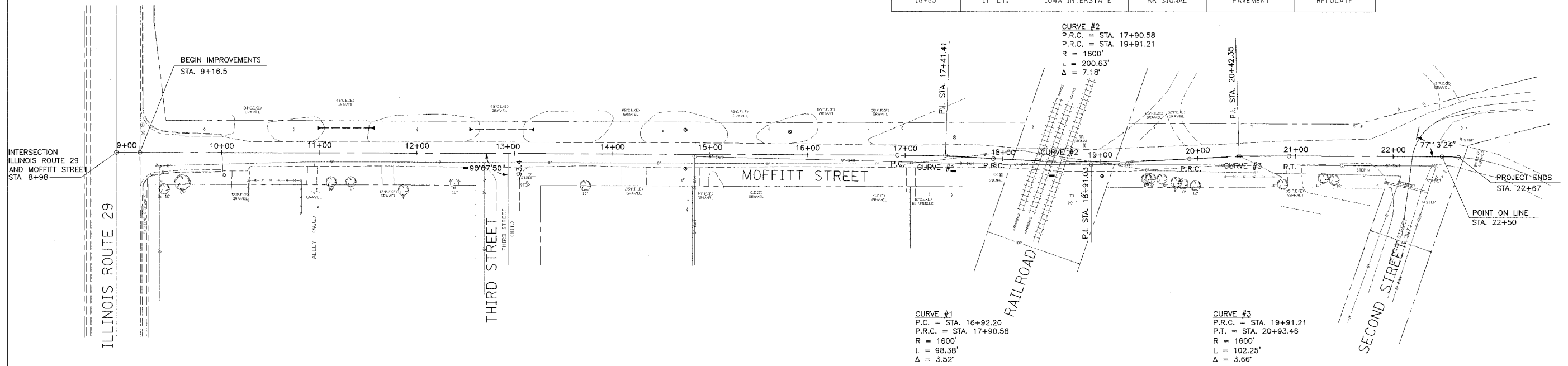


8930

F.A.U. SECTION	COUNTY	TOTAL SHEETS	SHEET NO.
6579 05-00035-00-RF	PEORIA	31	7
STA. TO STA.			
FED. ROAD DIST. NO. 4 ILLINOIS		FED. AID PROJECT	

BENCHMARKS				
BENCHMARK	DESCRIPTION	ELEVATION	STATION	OFFSET
TBM 1	NNE CAP BOLT ON FIRE HYDRANT	506.40	9+55±	28.5' RT.
TBM 2	NNE CAP BOLT ON FIRE HYDRANT	489.60	21+85±	30' RT.

STATUS OF UTILITIES					
STATION	OFFSET	OWNER	TYPE OF UTILITY	TYPE OF CONFLICT	DISPOSITION
9+40	15' TO 20' RT.	CITY OF CHILLICOTHE	WATER VALVES	PAVEMENT	CAUTION
9+85 TO 17+00	25' LT.	AMEREN CILCO	OVERHEAD ELECTRIC	EARTH EXCAVATION	RELOCATE
12+50 TO 15+00	RT.	CITY OF CHILLICOTHE	WATERMAIN	STORM SEWER	CAUTION
17+50	LT. & RT.	CITY OF CHILLICOTHE	WATERMAIN	STORM SEWER	CAUTION
17+95	5' RT.	CITY OF CHILLICOTHE	MANHOLE	PAVEMENT	ADJUST
18+00	17' RT.	IOWA INTERSTATE	RR SIGNAL	PAVEMENT	RELOCATE
18+85	17' LT.	IOWA INTERSTATE	RR SIGNAL	PAVEMENT	RELOCATE



REVISIONS	
NAME	DATE

ILLINOIS DEPARTMENT OF TRANSPORTATION
**MOFFITT STREET IMPROVEMENTS
 ALIGNMENT TIES, BENCHMARKS
 AND STATUS OF UTILITIES**
 DATE 12/05/06
 DRAWN BY DLC
 CHECKED BY REW

TIES AND BENCHMARKS 12/05/2006 2:07:37 PM