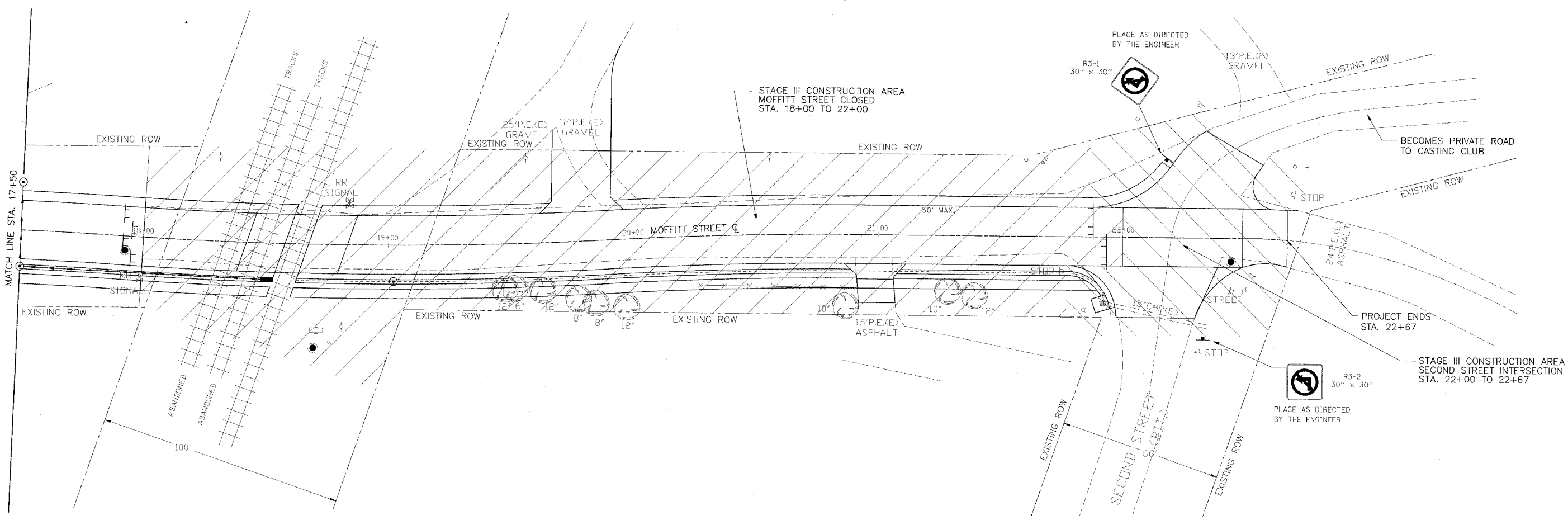


89370

P.A.U. RTE.	SECTION	COUNTY	TOTAL SHEETS	SHEET NO.
6579 D5-00035-00-RP		PEORIA	31	11
STA. 17+50		TO STA. 22+67		
FED. ROAD DIST. NO. 4		ILLINOIS FED. AID PROJECT		



**STA. 18+00 TO STA. 22+67**

**STAGE III CONSTRUCTION**

1. MOFFITT STREET OPEN TO TWO LANE, TWO-WAY TRAFFIC FROM IL. ROUTE 29 TO STA. 18+00.
2. MOFFITT STREET CLOSED FROM STA. 18+00 TO STA. 22+00.
3. REMOVE RAILROAD TRACK AND ABANDONED CROSSINGS.
4. REMOVE EXISTING PAVEMENT, ETC. STA. 18+00 TO STA. 22+00.
5. CONSTRUCT NEW PAVEMENT, SHOULDER, GUTTER, AND DRAINAGE WORK STA. 18+00 TO 22+00.

**SECOND STREET INTERSECTION**

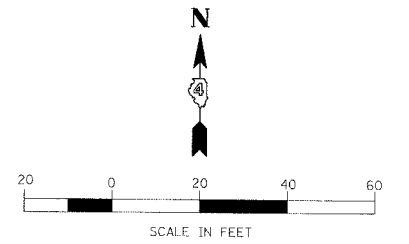
6. STAGE CONSTRUCT ENTRANCE LT. STA. 22+20.
7. COMPLETE PCC PAVEMENT STA. 22+00 TO STA. 22+48.85. STAGE CONSTRUCT TO MAINTAIN TRAFFIC TO THE NATURE PARK.
8. RESURFACE STA. 22+48.85 TO STA. 22+67 AND SECOND STREET.
9. COMPLETE ANY REMAINING DRAINAGE WORK.
10. OPEN TO TWO LANE, TWO-WAY TRAFFIC UPON COMPLETION OF ALL WORK AT SECOND STREET AND THE RAILROAD CROSSING.

**STA. 18+00 TO STA. 22+67**

**STAGE III TRAFFIC**

1. MOFFITT STREET CLOSED STA. 18+00 TO STA. 22+00. STD. BLR 17
2. STAGE CONSTRUCTION ON SECOND STREET. STD. 701501
3. UPON COMPLETION OF STAGE III, REMOVE ALL TRAFFIC CONTROL DEVICES, TEMPORARY SIGNS, OPEN MOFFITT STREET TO TWO LANE, TWO-WAY TRAFFIC.
4. ENTRANCE AT LT. STA. 19+75± CLOSED FOR CONSTRUCTION.
5. ENTRANCE AT RT. STA. 21+00± CLOSED FOR CONSTRUCTION.

TRAFFIC CONTROL STANDARDS  
701501  
BLR17



REVISIONS	
NAME	DATE

ILLINOIS DEPARTMENT OF TRANSPORTATION  
**MOFFITT STREET IMPROVEMENTS  
MAINTENANCE OF TRAFFIC STAGE III  
STA. 18+00 TO STA. 22+67**

DATE 12/05/06  
DRAWN BY DLC  
CHECKED BY REW

PLAN 12/05/06 9:01 AM 12/22/2006 11:26:13 AM