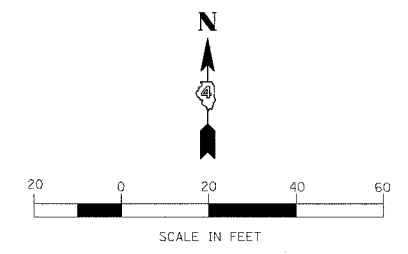
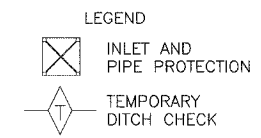
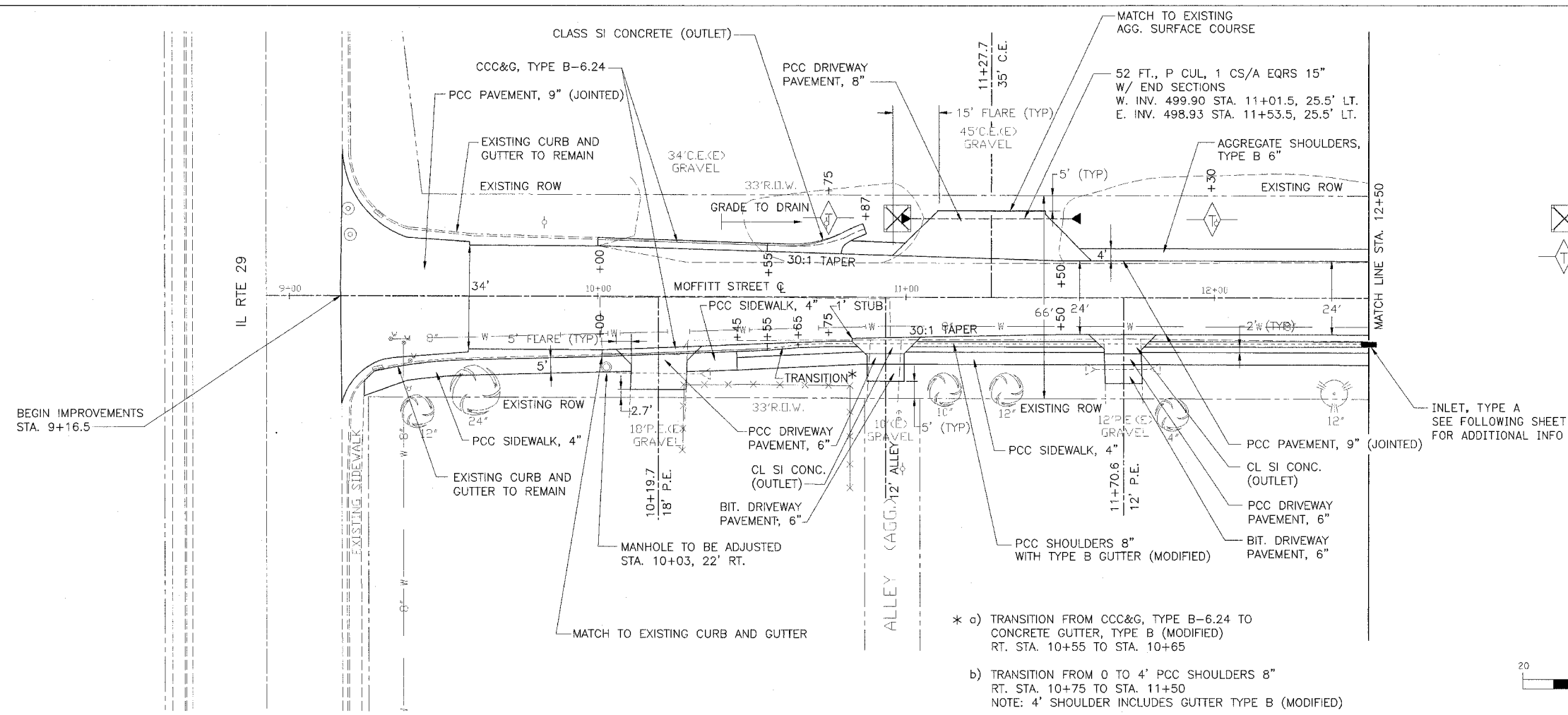


89370

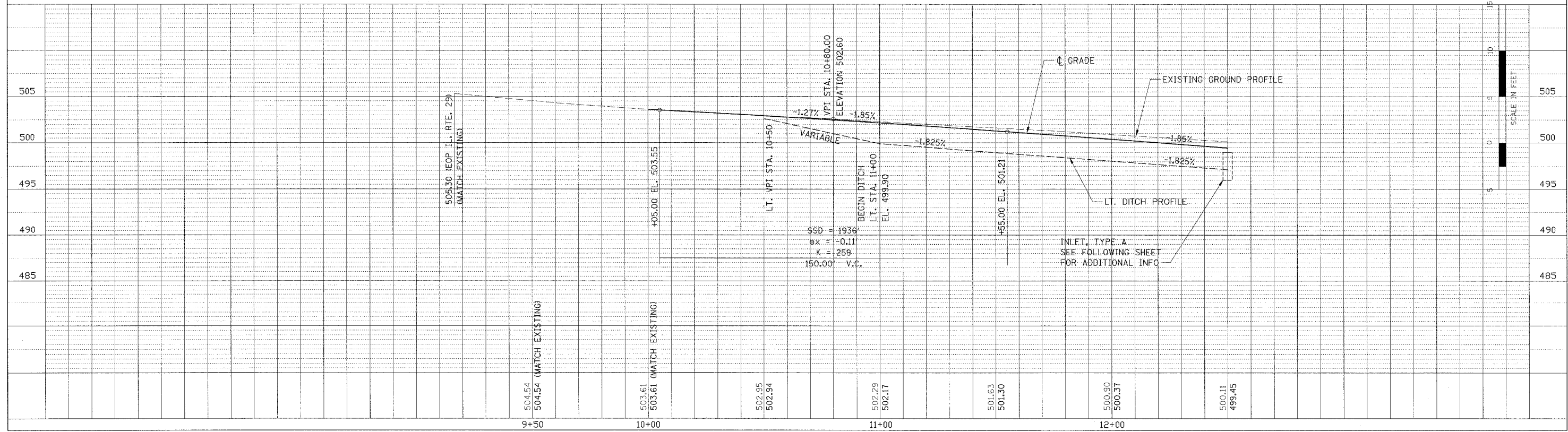
F.A.U. RTE.	SECTION	COUNTY	TOTAL SHEETS	SHEET NO.
6579 DS-00035-00-RP		PEORIA	31	15
STA. 9+16.5		TO STA. 12+50		
FED. ROAD DIST. NO. 4		ILLINOIS FED. AID PROJECT		

DATE	BY

DATE	BY



- * a) TRANSITION FROM CCC&G, TYPE B-6.24 TO CONCRETE GUTTER, TYPE B (MODIFIED) RT. STA. 10+55 TO STA. 10+65
- b) TRANSITION FROM 0 TO 4' PCC SHOULDERS 8" RT. STA. 10+75 TO STA. 11+50
NOTE: 4' SHOULDER INCLUDES GUTTER TYPE B (MODIFIED)



MOFFITT STREET IMPROVEMENTS - PLAN AND PROFILE - STA. 9+16.5 TO STA. 12+50

DWG/CP-150 12/27/2007 B. 64.07 AN