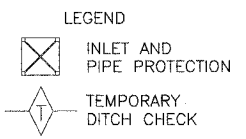
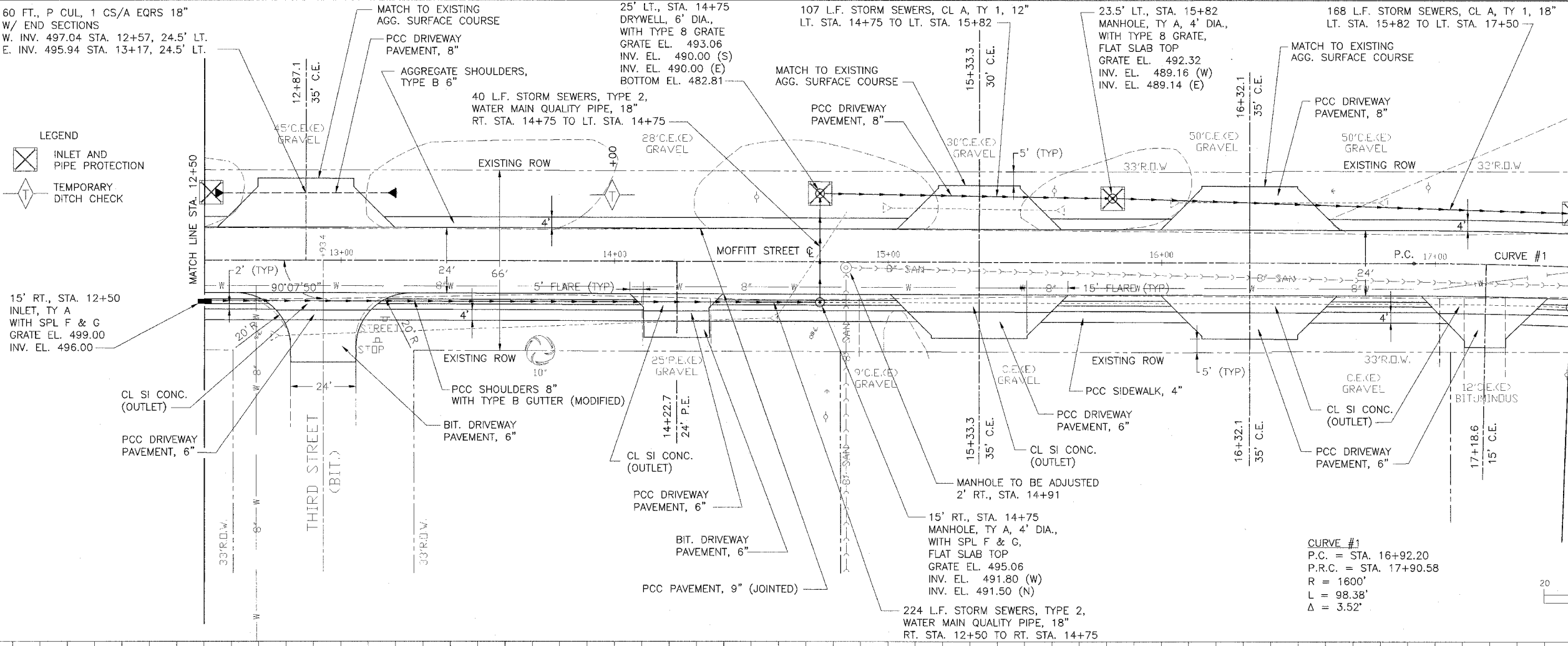
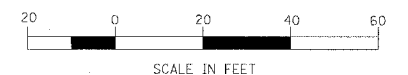


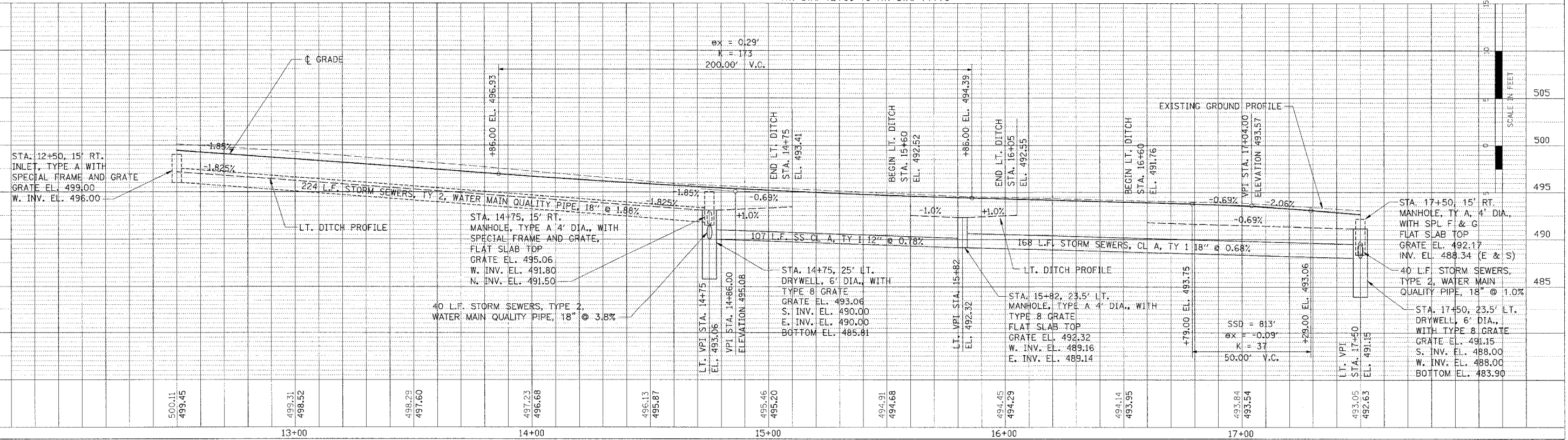
F.A.U. R.T.E.	SECTION	COUNTY	TOTAL SHEETS	SHEET NO.
6579 05-00035-00-RF	PEORIA		31	16
STA. 12+50		TO STA. 17+50		
FED. ROAD DIST. NO. 4 ILLINOIS FED. AID PROJECT				



15' RT., STA. 12+50
INLET, TY A
WITH SPL F & G
GRATE EL. 499.00
INV. EL. 496.00



CURVE #1
P.C. = STA. 16+92.20
P.R.C. = STA. 17+90.58
R = 1600'
L = 98.38'
Δ = 3.52'



MOFFITT STREET IMPROVEMENTS - PLAN AND PROFILE - STA. 12+50 TO STA. 17+50

DATE	BY

DATE	BY