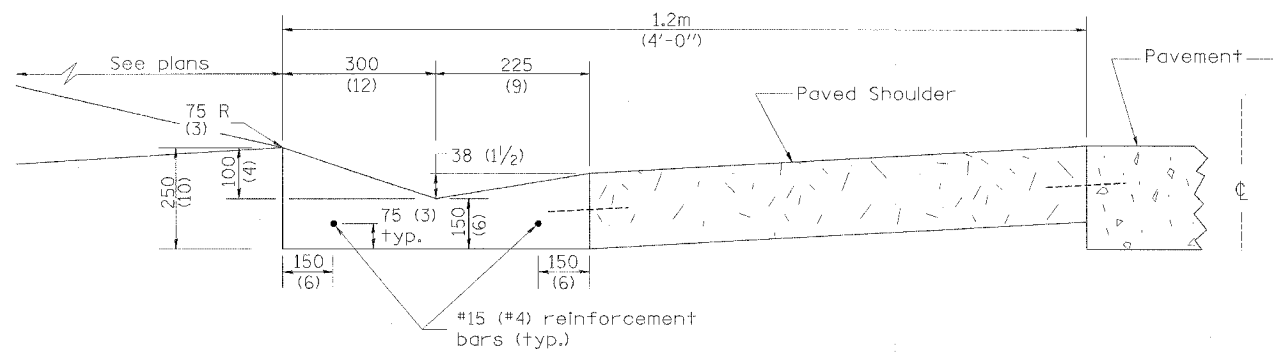


F.A.U. RTE.	SECTION	COUNTY	TOTAL SHEETS	SHEET NO.
6579 05-00035-00-RP		PEORIA	31	20
STA.	TO STA.			
FED. ROAD DIST. NO. 4	ILLINOIS	FED. AID PROJECT		

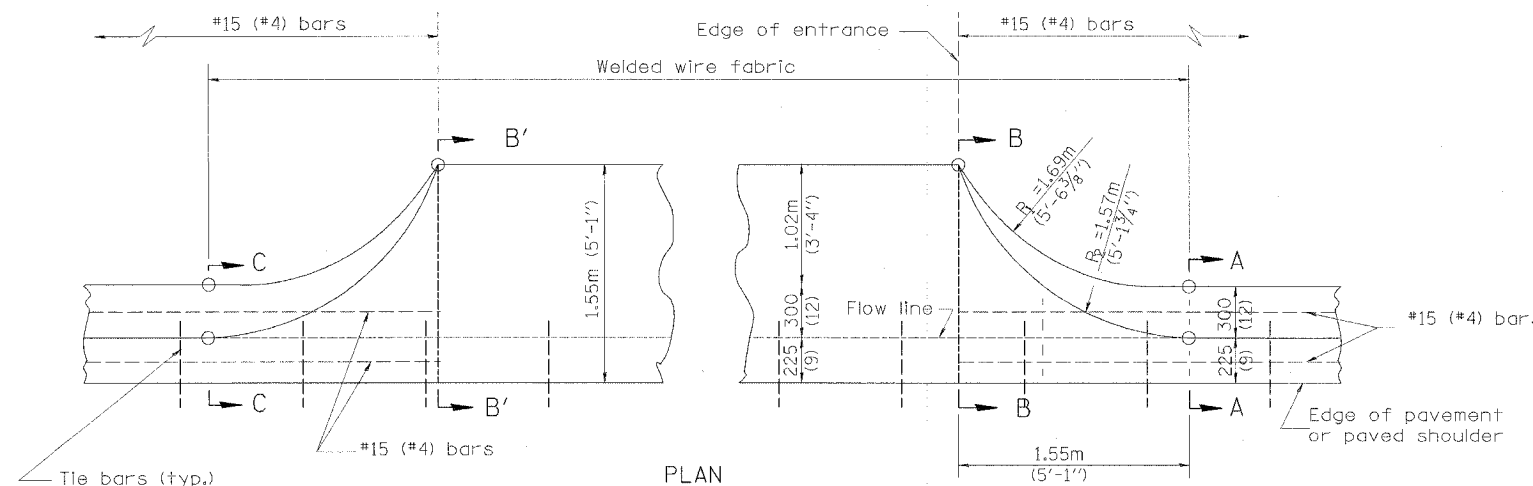


SHOULDER EDGE GUTTER

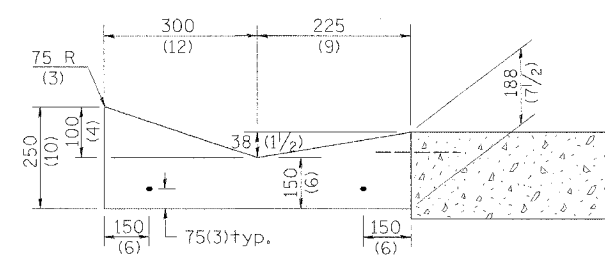
TYPE B GUTTER (MODIFIED)

GENERAL NOTES:

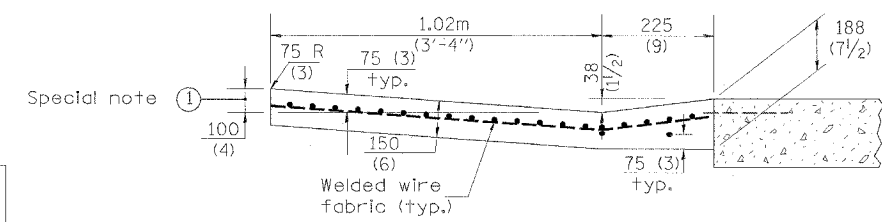
1. TYPE B GUTTER (MODIFIED) shall conform to the applicable portions of Section 606.
2. Tie bars shall be No. 20 (No. 6) at 600mm (24") centers unless otherwise shown.
3. Gutter, gutter inlets, gutter outlets, and gutter entrances shall be tied to rigid pavement in accordance with details shown on Standard 420001.
4. Joints shall be constructed in accordance with Article 606.01.
5. Welded wire fabric shall conform to Article 1006.10(c)(1), and shall not be less than 2.83 kg/m<sup>2</sup> (58 lbs/100 sq.ft.).



TYPICAL URBAN ENTRANCE



SECTION A-A & C-C



SECTION B-B & B'-B'

SPECIAL NOTES:

- ① 100 (4) is the normal dimension. If specified in the plans, the following shall be used for improved entrance match-up: Minimum - 65 (2 1/2) Maximum - 125 (5)

QUANTITY URBAN ENTRANCE  
 Section B'-B' to B-B= (0.09 cu. yd./ft.),  
 Section C-C to B'-B' + B-B to A-A= (0.64 cu. yd.).

All dimensions are in millimeters (inches) unless otherwise noted.

REVISIONS	
NAME	DATE

ILLINOIS DEPARTMENT OF TRANSPORTATION  
**MOFFITT STREET IMPROVEMENTS**  
**DETAIL - TYPE B GUTTER (MODIFIED)**  
**SHEET 1 OF 2**

DATE 12/05/06  
 DRAWN BY DLC  
 CHECKED BY REW