

PLAN FOR MOFFITT STREET (FAU 6547) IMPROVEMENTS

FOR
CITY OF CHILlicothe
SECTION 05-00035-00-RP
PEORIA COUNTY
PROJECT NO. M-5077(4)
C-94-083-05

DESIGN DESIGNATION

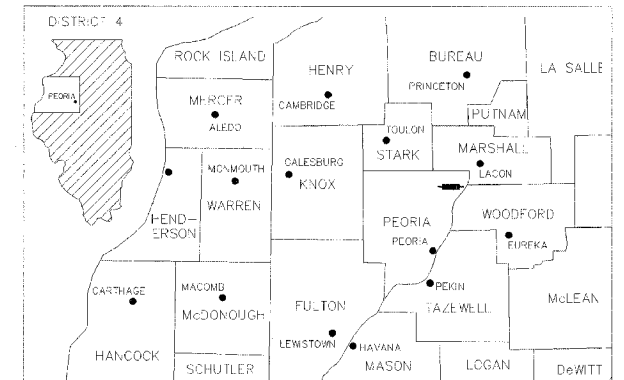
MOFFITT STREET
 150 (26) LOCAL ROAD 0.53 (PCC-20)
 ADT = 1500 (2026)
 PV = 85%
 SU = 10%
 MU = 5%

DRAWING SCALES

CROSS SECTION VERTICAL: 1" = 2.5'

PROFILE VERTICAL: 1" = 5'
 CROSS SECTION HORIZONTAL: 1" = 5'

PLAN: 1" = 20'
 PROFILE HORIZONTAL: 1" = 20'



LOCATION OF SECTION INDICATED THUS:



PROJECT ENDS
 STA. 22+67

PROJECT BEGINS
 STA. 9+16.5

RAILROAD OMISSION
 STA. 18+42.1 TO
 STA. 18+83.2



Kenneth M. Coulter
 KENNETH M. COULTER
 ILLINOIS REGISTERED PROFESSIONAL ENGINEER
 No. 062-038839
 EXPIRATION DATE 11/30/07
 1-3-07
 DATE

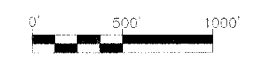
APPROVED	<i>Paul O. 03</i>	2007
	<i>Greg Joyce</i>	MAYOR, CITY OF CHILlicothe
PASSED	<i>January 16</i>	2007
	<i>John Laballe</i>	DISTRICT FOUR ENGINEER OF LOCAL ROADS & STREETS
RELEASING FOR BID BASED ON LIMITED REVIEW	<i>January 16</i>	2007
	<i>John</i>	DEPUTY DIRECTOR OF HIGHWAYS, REGION THREE ENGINEER

WARNING

 CALL JULIE
 BEFORE YOU DIG

BITUMINOUS SUPERPAVE
 QC/QA BITUMINOUS
 CATALOG NO. 033088-00D

LOCATION MAP



GROSS LENGTH OF IMPROVEMENT = 1,350.50 FEET = 0.256 MILES
 NET LENGTH OF IMPROVEMENT = 1,309.4 FEET = 0.248 MILES



89370

F.A.U. RTE.	SECTION	COUNTY	TOTAL SHEETS	SHEET NO.
6579 05-00035-00-RP		PEORIA	31	2
STA.		TO STA.		
FED. ROAD DIST. NO. 4 ILLINOIS FED. AID PROJECT				

INDEX OF SHEETS

SHT. NO.	DESCRIPTION
1	COVER SHEET
2	INDEX OF SHEETS, COMMITMENTS, LIST OF STANDARDS, GENERAL NOTES AND JOB SPECIFIC NOTES
3	SUMMARY OF QUANTITIES
4	TYPICAL SECTIONS
5-6	SCHEDULE OF QUANTITIES
7	ALIGNMENT, TIES, BENCHMARKS AND STATUS OF UTILITIES
8-11	MAINTENANCE OF TRAFFIC
12-14	REMOVAL PLANS
15-17	ROADWAY AND DRAINAGE PLAN AND PROFILES
18-21	DETAILS
22-30	CROSS SECTIONS
DISTRICT 4 CADD STANDARDS:	
31	440001-D4 BITUMINOUS SURFACE REMOVAL (COLD MILLING)

LIST OF STANDARDS

- 000001-04 STANDARD SYMBOLS, ABBREVIATIONS AND PATTERNS
- 280001-03 TEMPORARY EROSION CONTROL SYSTEMS
- 420001-06 PAVEMENT JOINTS
- 420101-03 24" JOINTED PCC PAVEMENT
- 420111-01 PAVEMENT ROUNDOUTS
- 420701-01 PAVEMENT FABRIC
- 542401 METAL END SECTION FOR PIPE CULVERT
- 542406 METAL END SECTION FOR PIPE ARCH
- 602301-01 INLET TYPE A
- 602401-01 MANHOLE, TYPE A
- 602601-01 PRECAST REINFORCED CONCRETE FLAT SLAB TOP
- 602701-01 CAST IRON STEPS
- 604036-01 GRATE TYPE B
- 664001-01 CHAINLINK FENCE
- 701501-03 URBAN LANE CLOSURE 2L, 2W, UNDIVIDED
- 701606-04 URBAN LANE CLOSURE MULTILANE 2W WITH MOUNTABLE MEDIAN
- 702001-06 TRAFFIC CONTROL DEVICES
- 780001-01 TYPICAL PAVEMENT MARKINGS
- BLR 17-3 TRAFFIC CONTROL DEVICES

COMMITMENTS

NO COMMITMENTS HAVE BEEN MADE FOR THIS PROJECT.

GENERAL NOTES

UTILITIES - LOCATIONS/INFORMATION ON PLANS

The locations of existing water mains, gas mains, sewers, electric power lines, telephone lines and other utilities as shown on the plans are based on careful field investigation and the best information available, but they are not guaranteed. Unless elevations are shown --- all utility locations shown on the cross sections are based on the approximate depth supplied by the utility company. It shall be the Contractor's responsibility to ascertain their exact location from the utility companies and by field inspection.

PLAN ELEVATIONS - U.S.G.S. MEAN SEA LEVEL DATUM

All elevations shown on the plans are established from U.S.G.S. mean sea level datum.

PROPERTY OWNER ACCESS REQUIREMENT

Access must be maintained to all existing properties during construction per Article 107.09 unless arrangements are made in writing by the Contractor with the property owners with a copy to the Engineer for short-term closures.

TEMPORARY MATERIAL REQUIREMENTS - UTILITY AND DRIVEWAY CROSSINGS

Incidental bituminous surface shall be used for all temporary side road crossings. Aggregate surface course may be used for all driveway crossings except during winter shutdown in accordance with Article 107.09.

CONSECUTIVE SIDE STREET (ROAD) CLOSURE - PROHIBITED

No two consecutive side streets (roads or school driveways) may be closed at the same time during construction. The contractor must alternate streets (roads).

ENVIRONMENTAL REVIEWS

Prior to the use of any proposed borrow areas, use areas (temporary access roads, detours, run-arounds, etc.) and/or waste areas, the Contractor shall file the required environmental resource request surveys according to Section 107.22 of the Standard Specifications. These surveys are required in order for the Department to conduct cultural and biological resource surveys for the proposed site.

Prior to any waste materials being removed from the construction site the required environmental resource surveys will need to be obtained and filed by the Contractor. Excess waste products removed from the construction site shall be disposed of as required in Section 202.03 of the Standard Specifications.

Any protruding metal bars shall be removed prior to the disposal of broken concrete at approved disposal sites.

The required environmental resource documentation shall include the following:

- BDE Form 2289 (Environmental Survey Request)
- A location map showing the size limits and location of the use area
- Signed property owner agreement form
- Color photographs depicting the use area

Please note that a minimum of two weeks shall be allowed for the District to obtain the required environmental clearances.

LABORATORY TESTING OF SUPERPAVE MIXES

Some aggregate compositions produce inconsistent results when burned in the ignition oven. The Engineer will determine whether the ignition oven or AC nuclear gauge will be required after the aggregate sources have been identified.

HMA ASPHALT MIXTURE REQUIREMENTS

Mixture Uses(s):	BINDER COURSE, SUPERPAVE
RAP % (Max)**:	25%
AC/PG:	PG 64-22
Design Air Voids:	4.0% @ N = 50
Mixture Composition:	IL 19.0
(Gradation Mixture)	
Friction Aggregate:	N/A

Mixture Uses(s):	SURFACE COURSE, SUPERPAVE N50
RAP % (Max)**:	15%
AC/PG:	PG 64-22
Design Air Voids:	4.0% @ N = 50
Mixture Composition:	IL 9.5 OR 12.5
(Gradation Mixture)	
Friction Aggregate:	MIX C

**If the RAP option is selected, the asphalt cement grade may need to be adjusted; this will be determined by the Engineer.

AGGREGATE FOR DRIVEWAY PLACEMENT

The material used for construction of permanent aggregate driveways shall be gravel or crushed stone, as directed by the Engineer, to replace in kind the existing aggregate driveways.

FINAL FINISH ON P.C. CONCRETE PAVEMENT, TYPE B

A Type "B" final finish, obtained in accordance with Article 420.11 (e)(2) of the Standard Specifications, shall be provided for the Portland Cement Concrete Pavement.

ORDERING LENGTH CONFIRMATION - DRAINAGE ITEMS

The Contractor shall consult with the Engineer in regard to the exact length of the box/pipe culverts, storm sewers, and/or pipe drains required prior to ordering these items.

EXISTING DRAINAGE PIPES CONNECTED TO NEW STRUCTURES

In accordance with Section 602 of the Standard Specifications, the connecting of existing drain tiles, pipe culverts, or storm sewers to the proposed drainage system structures will not be paid for separately but shall be considered as included in the pay items provided.

TRANSITION PAYMENT METHOD - NEW/OLD CONSTRUCTION

Ten feet transitions shall be used to match proposed items of work to existing items in the field unless otherwise shown. The transition shall be paid at the contract unit price for the proposed item of work specified.

JOB SPECIFIC NOTES

EARTH EXCAVATION - INCIDENTAL TO DRIVEWAY/SIDE STREET PAVEMENT

Earth excavation and backfill for proposed Type B Gutter, entrances and adjacent pavement for driveways and side streets shall be included in the cost of various items.

FLAGGER

A Railroad Flagger shall be provided when work is adjacent to the Iowa Interstate Railroad.

REVISIONS	
NAME	DATE
	1/16/07

ILLINOIS DEPARTMENT OF TRANSPORTATION
MOFFITT STREET IMPROVEMENTS
INDEX OF SHEETS, COMMITMENTS,
LIST OF STANDARDS, GENERAL NOTES AND
JOB SPECIFIC NOTES

DATE 12/05/06
 DRAWN BY DLC
 CHECKED BY REW

SUMMARY OF QUANTITIES				CONSTRUCTION TYPE CODE			
CODE NO.	PAY ITEM	UNIT	TOTAL QUANTITY	J000	I000		
20100110	TREE REMOVAL (6 TO 15 UNITS DIAMETER)	UNIT	30	30.0			
20200100	EARTH EXCAVATION	CU YD	1724	1724.0			
20800150	TRENCH BACKFILL	CU YD	147	147.1			
21101615	TOPSOIL FURNISH AND PLACE, 4"	SQ YD	2093	2092.9			
25000210	SEEDING, CLASS 2A	ACRE	0.5	0.5			
25000400	NITROGEN FERTILIZER NUTRIENT	POUND	45	45.0			
25000500	PHOSPHORUS FERTILIZER NUTRIENT	POUND	45	45.0			
25000600	POTASSIUM FERTILIZER NUTRIENT	POUND	45	45.0			
25100115	MULCH, METHOD 2	ACRE	0.5	0.5			
28000250	TEMPORARY EROSION CONTROL SEEDING	POUND	50	50.0			
28000300	TEMPORARY DITCH CHECKS	EACH	4	4			
28000500	INLET AND PIPE PROTECTION	EACH	7	7			
40800200	BITUMINOUS MATERIALS (PRIME COAT)	TON	0.7	0.7			
40800300	AGGREGATE (PRIME COAT)	TON	1	1			
40800990	TEMPORARY RAMP	SQ YD	80	84.0	16.0		
40803310	HOT-MIX ASPHALT SURFACE COURSE, MIX "C", N50	TON	17		16.4		
40701841	HOT-MIX ASPHALT PAVEMENT (FULL-DEPTH), 8"	SQ YD	85		84.2		
42000401	PORTLAND CEMENT CONCRETE PAVEMENT 9" (JOINTED)	SQ YD	3676	3675.9			
42001300	PROTECTIVE COAT	SQ YD	4316	4316.0			
42300200	PORTLAND CEMENT CONCRETE DRIVEWAY PAVEMENT 6 INCH	SQ YD	182	181.4			
42300400	PORTLAND CEMENT CONCRETE DRIVEWAY PAVEMENT 8 INCH	SQ YD	345	344.5			
42400100	PORTLAND CEMENT CONCRETE SIDEWALK, 4"	SQ FT	4272	4272.0			
44000100	PAVEMENT REMOVAL	SQ YD	3818	3701.0	117.0		
44000157	HOT-MIX ASPHALT SURFACE REMOVAL, 2"	SQ YD	131		131.0		
44000200	DRIVEWAY PAVEMENT REMOVAL	SQ YD	54	53.3			
48101500	AGGREGATE SHOULDERS, TYPE B, 6"	SQ YD	384	384.0			
48300100	PORTLAND CEMENT CONCRETE SHOULDER 8"	SQ YD	208	207.5			
50105220	PIPE CULVERT REMOVAL	FOOT	429	429.0			
54207780	PIPE CULVERTS, TYPE 1, CORRUGATED STEEL OR ALUMINUM, EQUIVALENT ROUND-SIZE 15"	FOOT	85	85.0			
54207783	PIPE CULVERTS, TYPE 1, CORRUGATED STEEL OR ALUMINUM, EQUIVALENT ROUND-SIZE 18"	FOOT	60	60.0			
54215760	METAL END SECTIONS, EQUIVALENT ROUND-SIZE, 15"	EACH	4	4			
54215763	METAL END SECTIONS, EQUIVALENT ROUND-SIZE, 18"	EACH	2	2			
550A0050	STORM SEWERS, CLASS A, TYPE 1 12"	FOOT	207	207.0			
550A0090	STORM SEWERS, CLASS A, TYPE 1 18"	FOOT	168	168.0			
60219000	MANHOLES, TYPE A, 4'-DIAMETER, WITH TYPE 8 GRATE	EACH	1	1			
60220230	MANHOLES, TYPE A, 4'-DIAMETER, WITH SPECIAL FRAME AND GRATE	EACH	2	2			

SUMMARY OF QUANTITIES				CONSTRUCTION TYPE CODE			
CODE NO.	PAY ITEM	UNIT	TOTAL QUANTITY	J000	I000		
60236200	INLETS, TYPE A, TYPE 8 GRATE	EACH	1	1			
60238700	INLETS, TYPE A, WITH SPECIAL FRAME AND GRATE	EACH	2	2			
60255500	MANHOLES TO BE ADJUSTED	EACH	5	5			
60600095	CLASS SI CONCRETE (OUTLET)	CU YD	21.1	21.1			
60602900	CONCRETE GUTTER, TYPE B (MODIFIED)	FOOT	859	859.0			
60605000	COMBINATION CONCRETE CURB AND GUTTER, TYPE B-6.24	FOOT	110	110.0			
66410410	CHAIN LINK FENCE TO BE RELOCATED	FOOT	58	58.0			
67100100	MOBILIZATION	L SUM	1	1			
70101700	TRAFFIC CONTROL AND PROTECTION	L SUM	1	1			
* 78001110	PAINT PAVEMENT MARKING - LINE 4"	FOOT	316	316.0			
* 78001180	PAINT PAVEMENT MARKING - LINE 24"	FOOT	20	20.0			
XX005089	BITUMINOUS DRIVEWAY PAVEMENT, 6"	SQ YD	270	150.0	119.6		
XX005432	STORM SEWER, TYPE 2, WATER MAIN QUALITY PIPE, 18"	FOOT	304	304.0			
Z0013798	CONSTRUCTION LAYOUT	L SUM	1	1			
Z0018700	DRAINAGE STRUCTURE TO BE REMOVED	EACH	1		1		
Z0019500	DRYWELL	EACH	3	3			
Z0048665	RAILROAD PROTECTIVE LIABILITY INSURANCE	L SUM	1		1		
Z0076100	TRACK REMOVAL	FOOT	100		100.0		

* SPECIALTY ITEMS

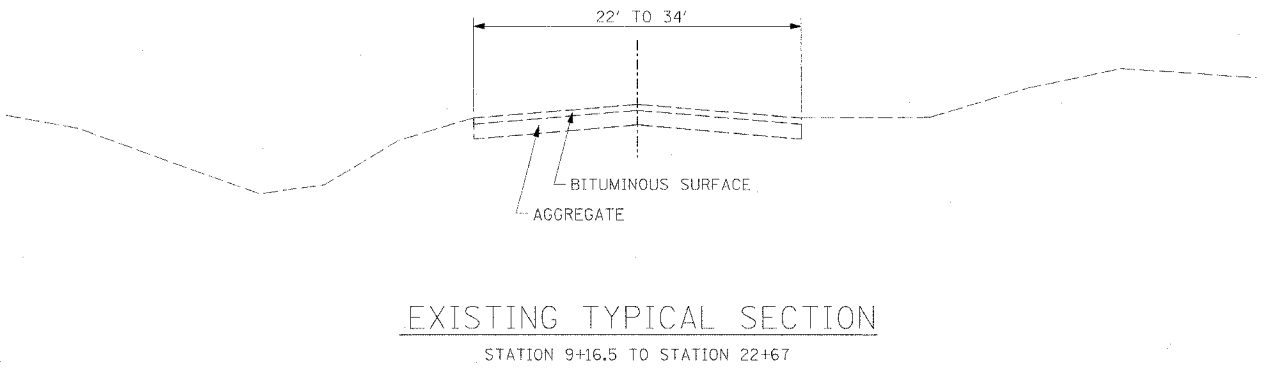
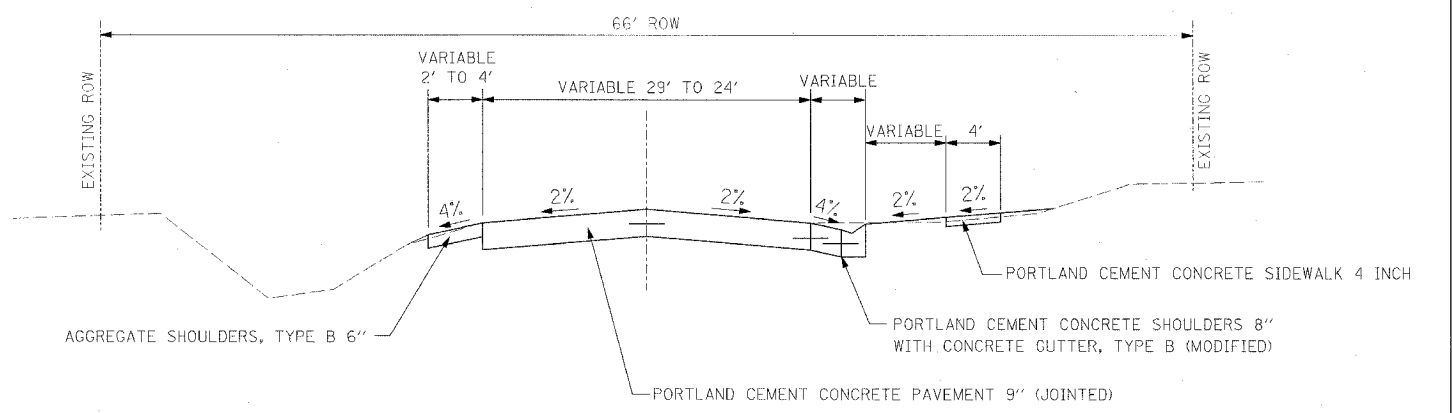
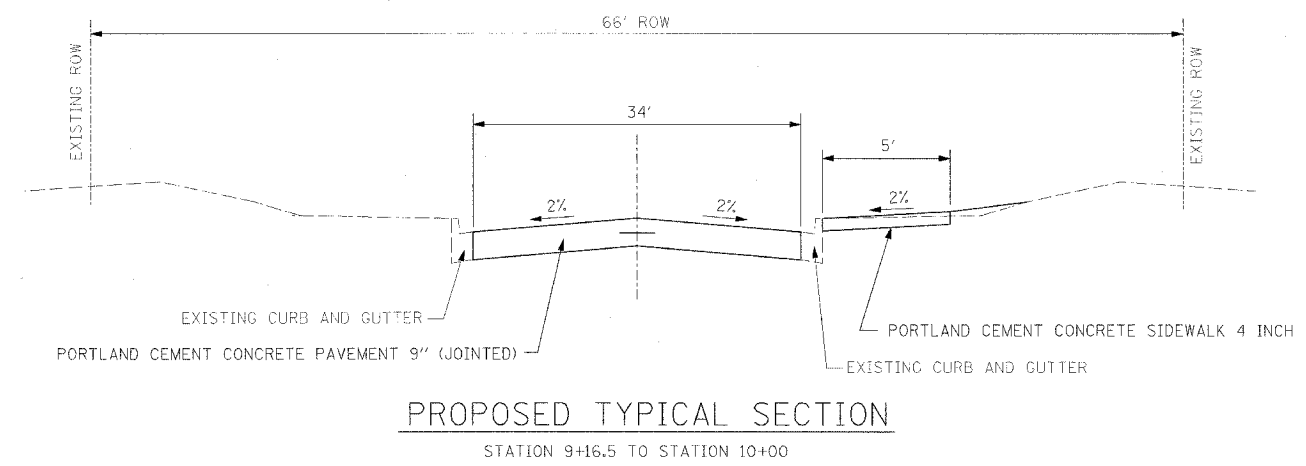
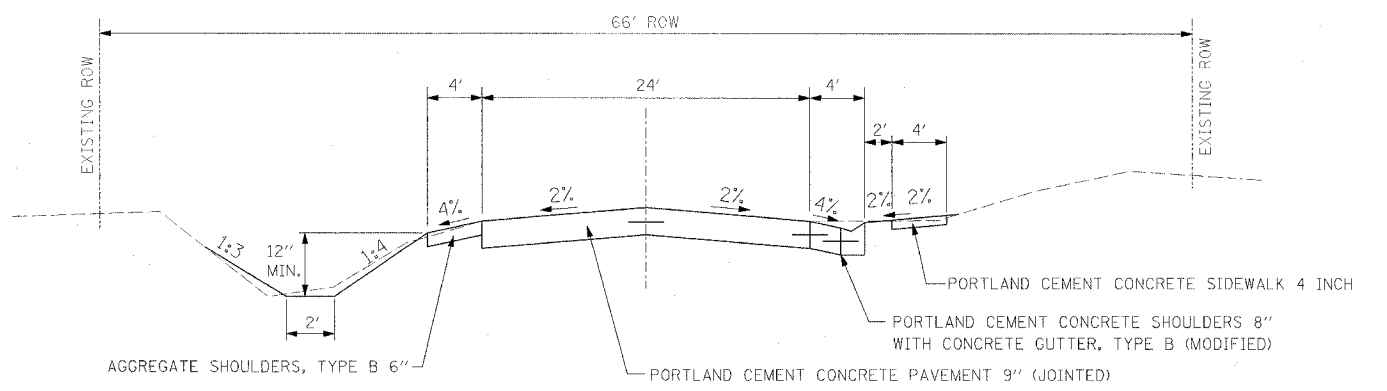
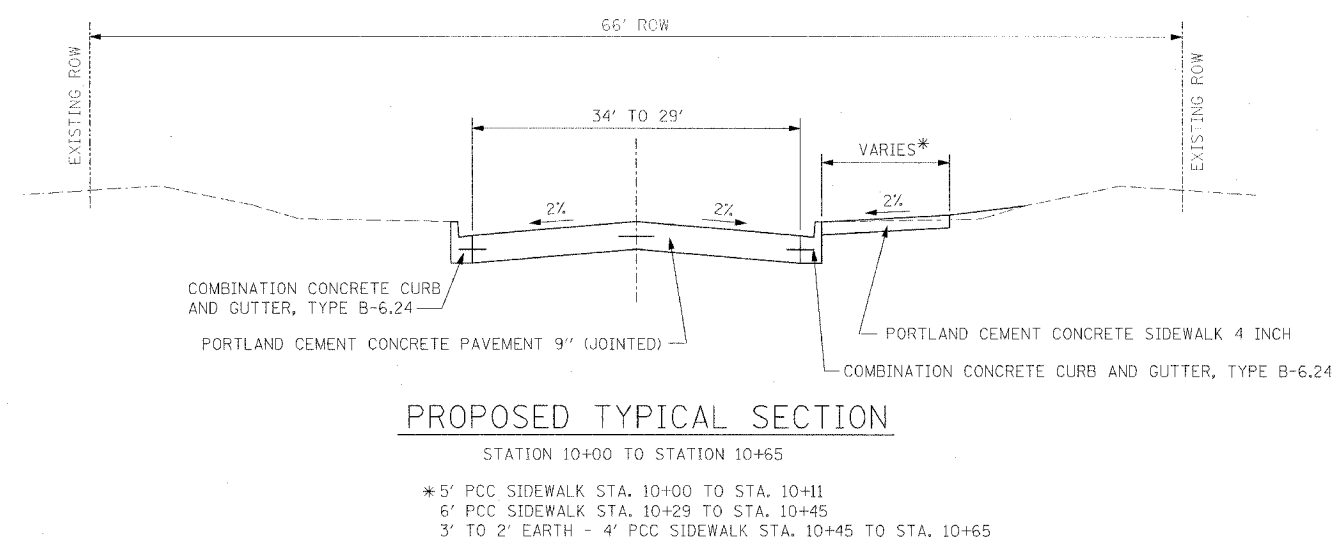
REVISIONS	
NAME	DATE
	1/16/07

ILLINOIS DEPARTMENT OF TRANSPORTATION
MOFFITT STREET IMPROVEMENTS
SUMMARY OF QUANTITIES
 DATE 12/05/06
 DRAWN BY DLC
 CHECKED BY REW

89370

F.A.U. RTE.	SECTION	COUNTY	TOTAL SHEETS	SHEET NO.
6579	05-00035-00-RF	PEORIA	31	4
STA.		TO STA.		
FED. ROAD DIST. NO. 4		ILLINOIS FED. AID PROJECT		

150 (26) LOCAL ROAD 0.53 (PCC-20)
 ADT = 1500 (2026)
 PV = 85%
 SU = 10%
 MU = 5%



REVISIONS	
NAME	DATE
	1/16/07

ILLINOIS DEPARTMENT OF TRANSPORTATION
MOFFITT STREET IMPROVEMENTS
TYPICAL SECTIONS

DATE 12/05/06
 DRAWN BY DLC
 CHECKED BY KMC

TYPICALS.DWG 1/16/07 8:31:20 AM

89370

F.A.U. SECTION	COUNTY	TOTAL SHEETS	SHEET NO.
6579 D5-00035-00-RP	PEORIA	31	5
STA. TO STA.		FED. ROAD DIST. NO. 4 ILLINOIS FED. AID PROJECT	

LOCATION	6 TO 15 UNITS DIA UNIT
19' RT. STA. 19+48	12.00
19' RT. STA. 19+52	6.00
20' RT. STA. 19+64	12.00
SUBTOTAL	30.00
TOTAL	30

LOCATION	DRIVEWAY PAVEMENT REMOVAL SQ YD
MOFFITT	
STA. 17+18.60	12' RT TO 25' RT 21.67
STA. 20+97.70	9' RT TO 28' RT 31.67
SUBTOTAL	53.33
TOTAL	54

LOCATION	INLET AND PIPE PROTECTION EACH
MOFFITT	
STA. 11+01.50	LT 1
STA. 12+50.00	LT 1
STA. 14+75.00	LT 1
STA. 15+82.00	LT 1
STA. 17+50.00	LT 1
STA. 19+62.00	LT 1
STA. 21+94.00	LT 1
SUBTOTAL	7
TOTAL	7

LOCATION	TEMPORARY DITCH CHECKS	
	LEFT	RIGHT
EACH		
STA. 10+75.00	1	
STA. 12+80.00	1	
STA. 14+00.00	1	
STA. 21+50.00	1	
SUBTOTAL	4	0
TOTAL	4	0

LOCATION	TEMPORARY RAMP SQ YD
MOFFITT	
STA. 18+00.00	LT 16.00
STA. 18+00.00	RT 16.00
STA. 19+50.00	LT 16.00
STA. 19+50.00	RT 16.00
STA. 22+20	RT 16.00
SUBTOTAL	80.00
TOTAL	80.0

LOCATION	PIPE CULVERT REMOVAL FOOT
RT. STA. 10+19.7	
	30
RT. STA. 11+70.6	
	24
RT. STA. 12+75	TO RT. STA. 14+60 185
RT. STA. 14+60	TO LT. STA. 14+80 46
	LT. STA. 15+33.3 66
	LT. STA. 16+32.1 78
SUBTOTAL	429
TOTAL	429

LOCATION	DRAINAGE STRUCTURE TO BE REMOVED EACH
STA. 21+92.00	27.0 ft RT 1
SUBTOTAL	1
TOTAL	1

LOCATION	TEMPORARY EROSION CONTROL SEEDING LB
STA. 9+16.5	TO STA. 22+67 50.0
SUBTOTAL	50.0
TOTAL	50

NOTES:
 1. TEMPORARY DITCH CHECKS ARE SPACED EVERY 100', TYPICALLY
 2. SEE STD. 280001 & DIST. STD. 280001-D4
 3. ADDITIONAL TEMPORARY DITCH CHECKS MAY BE REQUIRED AT LOCATIONS NOT SPECIFIED IN THE SCHEDULE AS DIRECTED BY THE RESIDENT ENGINEER.

CONVERSION RATES
 ASPHALT: 112 LB/SQ YD IN
 AGGREGATE = 2.05 TON/CU YD
 0.004 TONS = GALLON

LOCATION	PAVEMENT REMOVAL SQ YD
STA. 9+16.5	TO STA. 18+57.1 2,602.20
	RT. STA. 12+93.4 85.40
STA. 18+68.2	TO STA. 22+48.85 1,013.40
LT. STA. 21+86.5	TO LT. STA. 22+62.5 113.00
LT. STA. 22+54	TO LT. STA. 22+78 4.00
SUBTOTAL	3,818.00
TOTAL	3,818

LOCATION	TRACK REMOVAL FOOT
STA. 18+35.00	25' LT TO 25' RT 50
STA. 18+48.00	25' LT TO 25' RT 50
SUBTOTAL	100
TOTAL	100

*Based on three applications

LOCATION	HOT-MIX ASPHALT SURFACE REMOVAL, 2" SQ YD
RT. STA. 21+86.5	TO RT. STA. 22+37.5 89.6
STA. 22+48.85	TO STA. 22+67 41.4
SUBTOTAL	131.00
TOTAL	131

LOCATION	EARTH EXCAVATION CU YD
MOFFITT ST.	1,723.5
SUBTOTAL	1,723.5
TOTAL	1,724

PAVING SCHEDULE	BITUMINOUS MATERIALS (PRIME COAT)	AGGREGATE (PRIME COAT)	HOT-MIX ASPHALT SURFACE COURSE, MIX "C", N50	HOT-MIX ASPHALT PAVEMENT (FULL-DEPTH), 8"	PORTLAND CEMENT CONCRETE PAVEMENT 9" (JOINTED)	PORTLAND CEMENT CONCRETE SHOULDER 8"	PORTLAND CEMENT CONCRETE DRIVEWAY PAVEMENT, 6"	PORTLAND CEMENT CONCRETE DRIVEWAY PAVEMENT, 8"	PORTLAND CEMENT CONCRETE SIDEWALK, 4"	BITUMINOUS DRIVEWAY PAVEMENT, 6"	PROTECTIVE COAT
LOCATION	TON	TON	TON	SQ YD	SQ YD	SQ YD	SQ YD	SQ YD	SQ FT	SQ YD	SQ YD
STA. 9+16.5	TO STA. 12+50				1,121.90	33.75			1,356.00		1,254.30
STA. 12+50	TO STA. 17+50				1,333.30	69.75			1,378.00		1,638.30
STA. 17+50	TO STA. 22+48.85	0.168		84.20	1,220.70	104.00			1,538.00		1,423.40
RT. STA. 21+80	TO RT. STA. 22+37.5	0.239	0.16	11.40							
LT. STA. 21+80	TO LT. STA. 22+67									135.10	
STA. 22+48.85	TO STA. 22+67	0.031	0.08	5.00							
	RT. STA. 10+19.7						21.70				
	RT. STA. 10+93.0	0.014					4.60			7.30	
	LT. STA. 11+27.7							83.30			
	RT. STA. 11+70.6	0.016					4.70			8.00	
	LT. STA. 12+87.1							94.90			
	RT. STA. 12+93.4	0.045					12.90			22.60	
	RT. STA. 14+22.7	0.032					9.80			16.00	
	LT. STA. 15+33.3							78.30			
	RT. STA. 15+33.3						46.00				
	LT. STA. 16+32.1							88.00			
	RT. STA. 16+32.1						45.50				
	LT. STA. 17+18.6						30.10				
	LT. STA. 19+78.5	0.140								70.60	
	LT. STA. 20+97.7	0.020						6.10		10.00	
SUBTOTAL	0.71	0.26	16.40	84.20	3,675.90	207.50	181.40	344.50	4,272.00	269.60	4,316.00
TOTAL	0.7	1	17	85	3,676	208	182	345	4,272	270	4,316

CONVERSION RATES
 ASPHALT: 112 LB/SQ YD IN
 AGGREGATE = 2.05 TON/CU YD
 0.004 TONS = GALLON

APPLICATION RATES - BITUMINOUS MATERIALS (PRIME COAT)
 ON GRANULAR BASE: 0.5 GAL / SQ YD
 ON EXISTING PAVEMENT: 0.05 GAL / SQ YD
 ON COLD MILLED SURFACE: 0.1 GAL / SQ YD
 ON NEW BINDER: 0.03 GAL / SQ YD

LOCATION	SEEDING, CLASS 2A ACRE	NITROGEN FERTILIZER NUTRIENT POUND	PHOSPHORUS FERTILIZER NUTRIENT POUND	POTASSIUM FERTILIZER NUTRIENT POUND	MULCH, METHOD 2 ACRE	TOPSOIL FURNISH AND PLACE, 4" SQ YD
STA. 9+16.5	TO STA. 22+67	0.500	45.00	45.00	45.00	0.500
SUBTOTAL	0.500	45.00	45.00	45.00	0.500	2,093.00
TOTAL	0.5	45	45	45	0.5	2,093

REVISIONS	
NAME	DATE
	1/16/07

ILLINOIS DEPARTMENT OF TRANSPORTATION
MOFFITT STREET IMPROVEMENTS
SCHEDULE OF QUANTITIES

DATE: 12/05/06

DRAWN BY: D.L.C.
 CHECKED BY: REW

SCHEMATIC DATE: 12/15/2007 10:52:28 AM

89310

F.A.U. RTE.	SECTION	COUNTY	TOTAL SHEETS	SHEET NO.
6579	05-00035-00-RF	PEORIA	31	6
STA.		TO STA.		
FED. ROAD DIST. NO. 4		ILLINOIS		FED. AID PROJECT

AGGREGATE SHOULDERS SCHEDULE					AGGREGATE SHOULDERS, TYPE B, 6"
LOCATION					SQ YD
MOFFITT					
STA. 10+79.00	TO	STA. 10+98.00	LT		8.44
STA. 11+59.00	TO	STA. 12+50.00	LT		40.44
STA. 12+50.00	TO	STA. 12+57.00	LT		3.11
STA. 13+17.00	TO	STA. 15+05.00	LT		83.56
STA. 15+62.00	TO	STA. 16+02.00	LT		17.78
STA. 16+63.00	TO	STA. 17+50.00	LT		38.67
STA. 17+50.00	TO	STA. 18+82.00	LT		49.78
STA. 18+72.00	TO	STA. 19+64.00	LT		40.89
STA. 19+94.00	TO	STA. 22+20.00	LT		101.33
SUBTOTAL					384.00
TOTAL					384

STORM SEWER SCHEDULE									
LOCATION		TRENCH BACKFILL	STORM SEWERS, CLASS A		STORM SEWERS, WATER MAIN QUALITY	MAN TA 4 DIA W/ SPL F+G	MAN TA 4 DIA W/ TYPE B GRATE	INLETS, TYPE A, TYPE B GRATE	INLETS, TYPE A, W/ SPL F+G
MOFFITT		CU YD	TYPE 1	TYPE 2	18"	EA	EA	EA	EA
			12"	18"	18"				
			FT	FT	FT				
STA. 12+50.00	RT TO STA. 14+75.00	64.0			224.0				
STA. 14+75.00	RT TO STA. 14+75.00	19.6			40.0				
STA. 15+82.00	LT TO STA. 17+50.00			168.0					
STA. 14+75.00	LT TO STA. 15+82.00		107.0						
STA. 17+50.00	LT TO STA. 17+50.00	21.8			40.0				
STA. 17+50.00	LT TO STA. 18+50.00	41.7	100.0						
STA. 12+50.00	RT	15.00 ft							1.0
STA. 14+75.00	RT	15.00 ft				1.0			
STA. 15+82.00	LT	23.50 ft					1.0		
STA. 17+50.00	RT	15.00 ft				1.0			
STA. 18+50.00	RT	15.00 ft							1.0
STA. 21+94.00	RT	26.40 ft							
SUBTOTAL		147.1	207.0	168.0	304.0	2	1	1	2
TOTAL		147.0	207.0	168.0	304.0	2	1	1	2

AGGREGATE = 2.05 TON/CU YD

MANHOLE TO BE ADJUSTED			
LOCATION	EACH		
MOFFITT			
STA. 10+04.00	25.0 ft RT		1.00
STA. 14+91.00	2.0 ft RT		1.00
STA. 17+95.00	6.0 ft RT		1.00
STA. 21+52.00	10.0 ft RT		1.00
STA. 22+45.00	10.0 ft RT		1.00
SUBTOTAL			5.00
TOTAL			5

MOBILIZATION SCHEDULE	
LOCATION	MOBILIZATION L. SUM
ENTIRE PROJECT	1
SUBTOTAL	1
TOTAL	1

PIPE CULVERT, CORRUGATED STEEL OR ALUMINUM, EQUIVALENT ROUND-SIZE						METAL END SECTIONS, EQUIVALENT ROUND-SIZE					
LOCATION						TYPE 1		15"		18"	
ST						15"	18"	EA	EA	EA	EA
						FT	FT				
STA. 11+01.50	25.50 ft	LT TO	STA. 11+53.50	25.50 ft	LT	52.0					
STA. 19+62.00	29.00 ft	LT TO	STA. 19+95.00	27.00 ft	LT	33.0					
STA. 11+01.50	25.50 ft	LT						1.0			
STA. 11+53.50	25.50 ft	LT						1.0			
STA. 19+62.00	29.00 ft	LT						1.0			
STA. 19+95.00	27.00 ft	LT						1.0			
STA. 12+57.00	24.50 ft	LT TO	STA. 13+17.00	24.50 ft	LT		60.0				
STA. 12+57.00	24.50 ft	LT								1.0	
STA. 13+17.00	24.50 ft	LT								1.0	
SUBTOTAL						85.0	60.0	4.0	2.0		
TOTAL						85.0	60.0	4.0	2.0		

CURB AND GUTTER SCHEDULE						
LOCATION		CU YD	CONCRETE GUTTER, TYPE B (MODIFIED)	COMBINATION CONCRETE CURB AND GUTTER, TYPE B-6.24		
MOFFITT			FOOT	FOOT		
STA. 10+00.00	TO STA. 10+55.00			55.00		
STA. 10+00.00	TO STA. 10+55.00			55.00		
STA. 10+55.00	TO STA. 10+84.00		29.00			
STA. 11+02.00	TO STA. 10+93.4		1.72	62.00		
STA. 11+02.00	TO STA. 11+64.00		1.72	62.00		
STA. 11+77.00	TO STA. 12+50.00			73.00		
STA. 12+50.00	TO STA. 12+73.00			23.00		
STA. 13+14.00	TO STA. 12+93.4		2.80	95.00		
STA. 14+36.00	TO STA. 14+09.00		2.80	69.00		
STA. 14+36.00	TO STA. 14+22.7			69.00		
STA. 15+62.00	TO STA. 15+05.00		3.79	41.00		
STA. 15+62.00	TO STA. 15+33.3		3.79	41.00		
STA. 16+60.00	TO STA. 16+03.00			38.00		
STA. 16+60.00	TO STA. 16+32.1		1.99	38.00		
STA. 17+37.00	TO STA. 16+98.00			13.00		
STA. 17+50.00	TO STA. 17+18.6			103.00		
STA. 18+63.00	TO STA. 17+50.00			227.00		
STA. 21+06.00	TO STA. 20+90.00		1.99	86.00		
STA. 21+06.00	TO STA. 20+97.7		.46	86.00		
STA. 21+06.00	TO STA. 21+92.00					
STA. 21+06.00	TO STA. 21+92					
SUBTOTAL		21.06	859.00	110.00		
TOTAL		21.1	859	110		

CHAIN LINK FENCE TO BE RELOCATED SCHEDULE		
LOCATION	FOOT	
RT. STA. 20+28 TO RT. STA. 20+86	58.0	
SUBTOTAL		58.0
TOTAL		58

TRAFFIC CONTROL AND PROTECTION SCHEDULE	
LOCATION	TRAFFIC CONTROL AND PROTECTION L. SUM
ENTIRE PROJECT	1
SUBTOTAL	1
TOTAL	1

PERMANENT PAINT PAVEMENT MARKING SCHEDULE			
LOCATION		PAINT PAVEMENT MARKING - LINE 4"	PAINT PAVEMENT MARKING - LINE 24"
MOFFITT		YEL. SKIP	WHITE
		FT	FT
STA. 9+27.00	CL TO STA. 21+90.00		20.0
STA. 9+27.00	CL TO STA. 21+90.00	316.0	
SUBTOTAL		316.0	20.0
TOTAL		316	20

DRYWELL SCHEDULE			
LOCATION		DRYWELL EACH	
STA. 14+75.00	25.00 ft LT		1
STA. 17+50.00	23.50 ft LT		1
STA. 19+02.00	15.00 ft RT		1
SUBTOTAL			3
TOTAL			3

RAILROAD PROTECTIVE LIABILITY INSURANCE SCHEDULE	
LOCATION	RAILROAD PROTECTIVE LIABILITY INSURANCE L. SUM
ENTIRE PROJECT	1
SUBTOTAL	1
TOTAL	1

CONSTRUCTION LAYOUT SCHEDULE	
LOCATION	CONSTRUCTION LAYOUT L. SUM
ENTIRE PROJECT	1
SUBTOTAL	1
TOTAL	1

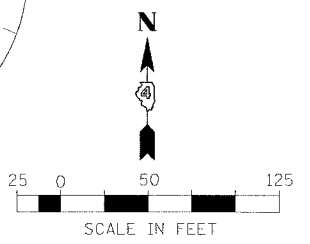
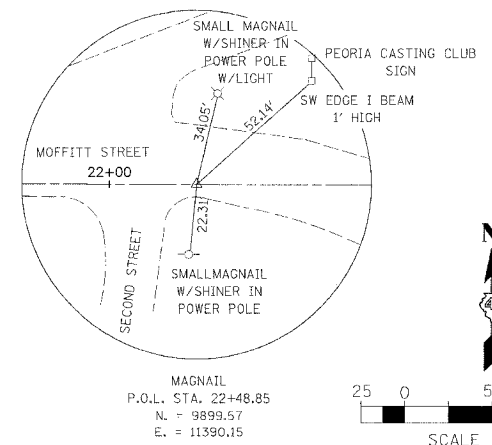
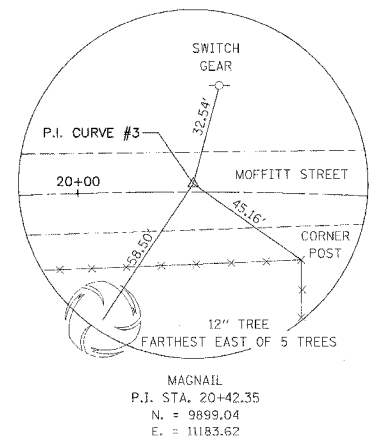
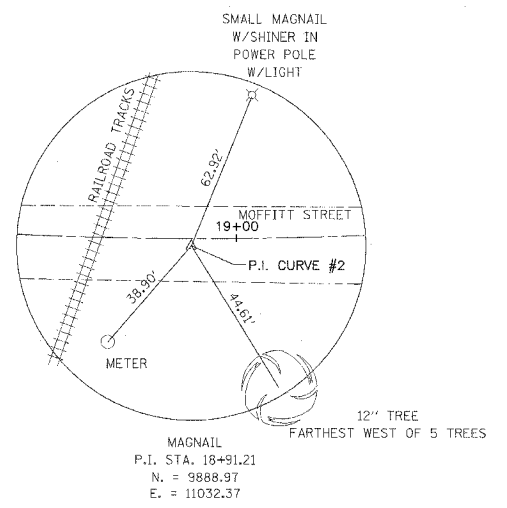
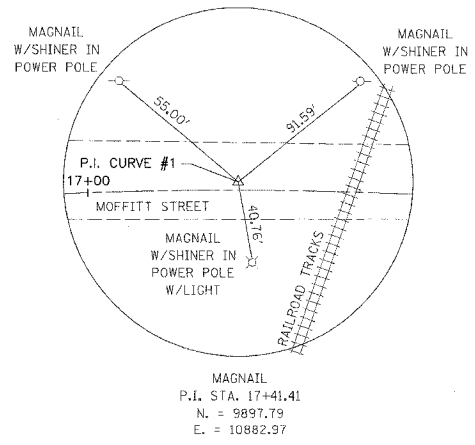
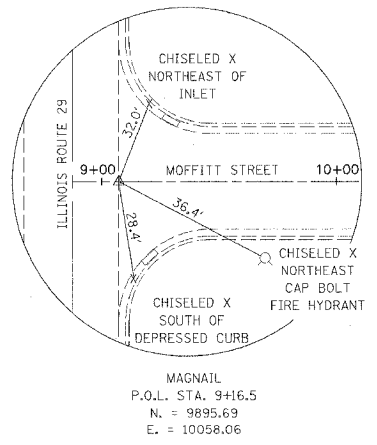
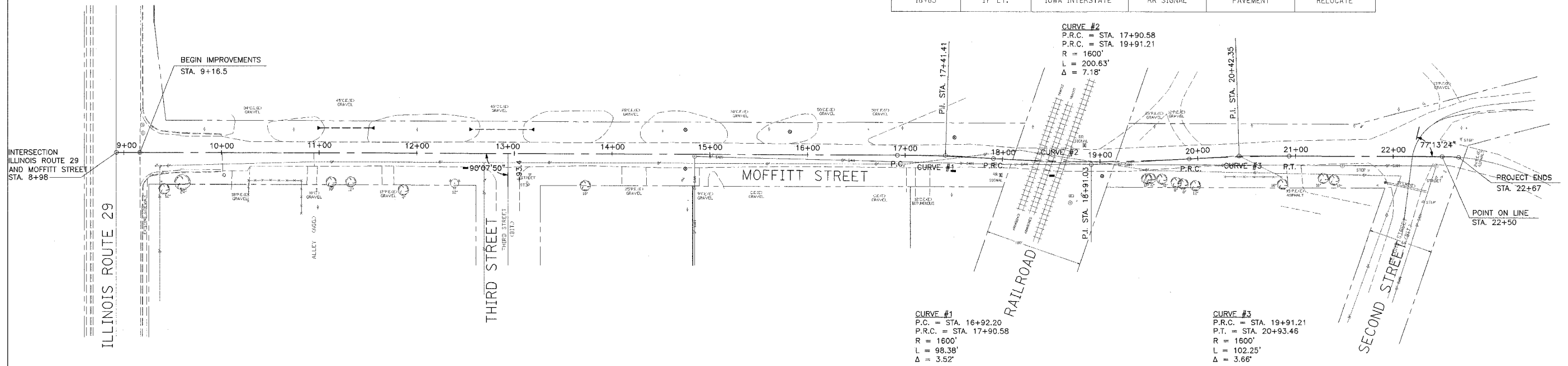
REVISIONS	
NAME	DATE

ILLINOIS DEPARTMENT OF TRANSPORTATION
MOFFITT STREET IMPROVEMENTS SCHEDULE OF QUANTITIES
 DATE 12/05/06
 DRAWN BY DLG
 CHECKED BY REY

F.A.U. SECTION	COUNTY	TOTAL SHEETS	SHEET NO.
6579 05-00035-00-RF	PEORIA	31	7
STA. TO STA.		FED. AID PROJECT	

BENCHMARKS				
BENCHMARK	DESCRIPTION	ELEVATION	STATION	OFFSET
TBM 1	NNE CAP BOLT ON FIRE HYDRANT	506.40	9+55±	28.5' RT.
TBM 2	NNE CAP BOLT ON FIRE HYDRANT	489.60	21+85±	30' RT.

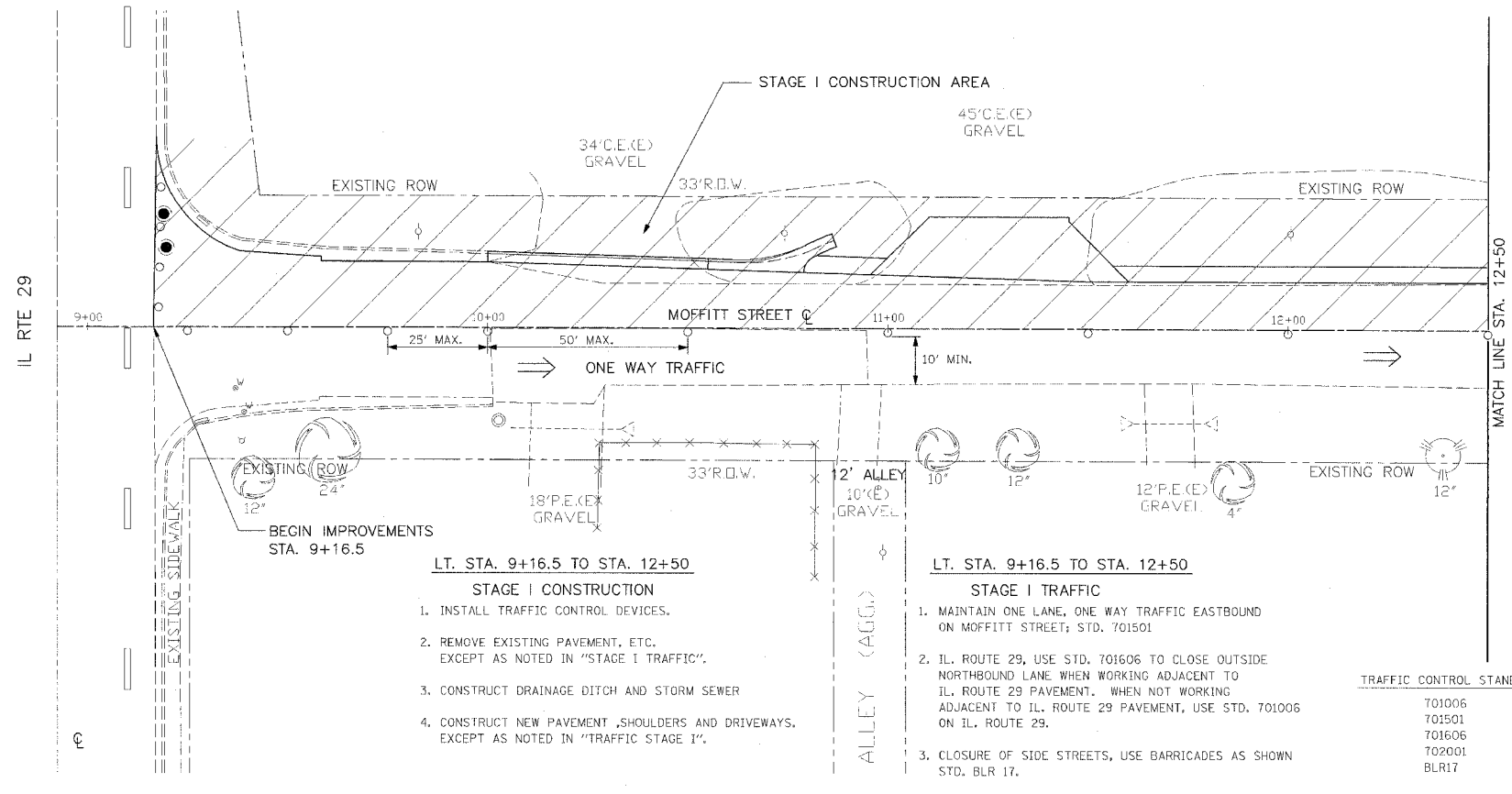
STATUS OF UTILITIES					
STATION	OFFSET	OWNER	TYPE OF UTILITY	TYPE OF CONFLICT	DISPOSITION
9+40	15' TO 20' RT.	CITY OF CHILLICOTHE	WATER VALVES	PAVEMENT	CAUTION
9+85 TO 17+00	25' LT.	AMEREN CILCO	OVERHEAD ELECTRIC	EARTH EXCAVATION	RELOCATE
12+50 TO 15+00	RT.	CITY OF CHILLICOTHE	WATERMAIN	STORM SEWER	CAUTION
17+50	LT. & RT.	CITY OF CHILLICOTHE	WATERMAIN	STORM SEWER	CAUTION
17+95	5' RT.	CITY OF CHILLICOTHE	MANHOLE	PAVEMENT	ADJUST
18+00	17' RT.	IOWA INTERSTATE	RR SIGNAL	PAVEMENT	RELOCATE
18+85	17' LT.	IOWA INTERSTATE	RR SIGNAL	PAVEMENT	RELOCATE



REVISIONS	
NAME	DATE

ILLINOIS DEPARTMENT OF TRANSPORTATION
**MOFFITT STREET IMPROVEMENTS
 ALIGNMENT TIES, BENCHMARKS
 AND STATUS OF UTILITIES**
 DATE 12/05/06
 DRAWN BY DLC
 CHECKED BY REW

F.A.U. RTE.	SECTION	COUNTY	TOTAL SHEETS	SHEET NO.
6579	05-00035-00-RP	PEORIA	31	8
STA. 9+16.5		TO STA. 12+50		
FED. ROAD DIST. NO. 4		ILLINOIS FED. AID PROJECT		

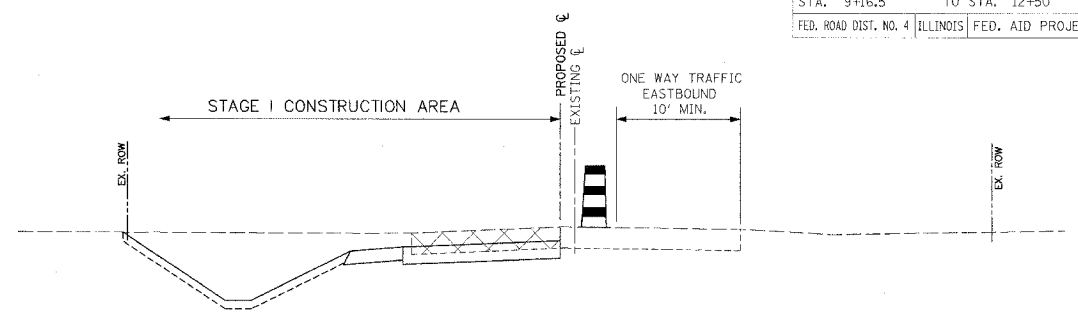


- LT. STA. 9+16.5 TO STA. 12+50**
STAGE I CONSTRUCTION
1. INSTALL TRAFFIC CONTROL DEVICES, EXCEPT AS NOTED IN "STAGE I TRAFFIC".
 2. REMOVE EXISTING PAVEMENT, ETC. EXCEPT AS NOTED IN "STAGE I TRAFFIC".
 3. CONSTRUCT DRAINAGE DITCH AND STORM SEWER.
 4. CONSTRUCT NEW PAVEMENT, SHOULDERS AND DRIVEWAYS, EXCEPT AS NOTED IN "TRAFFIC STAGE 1".

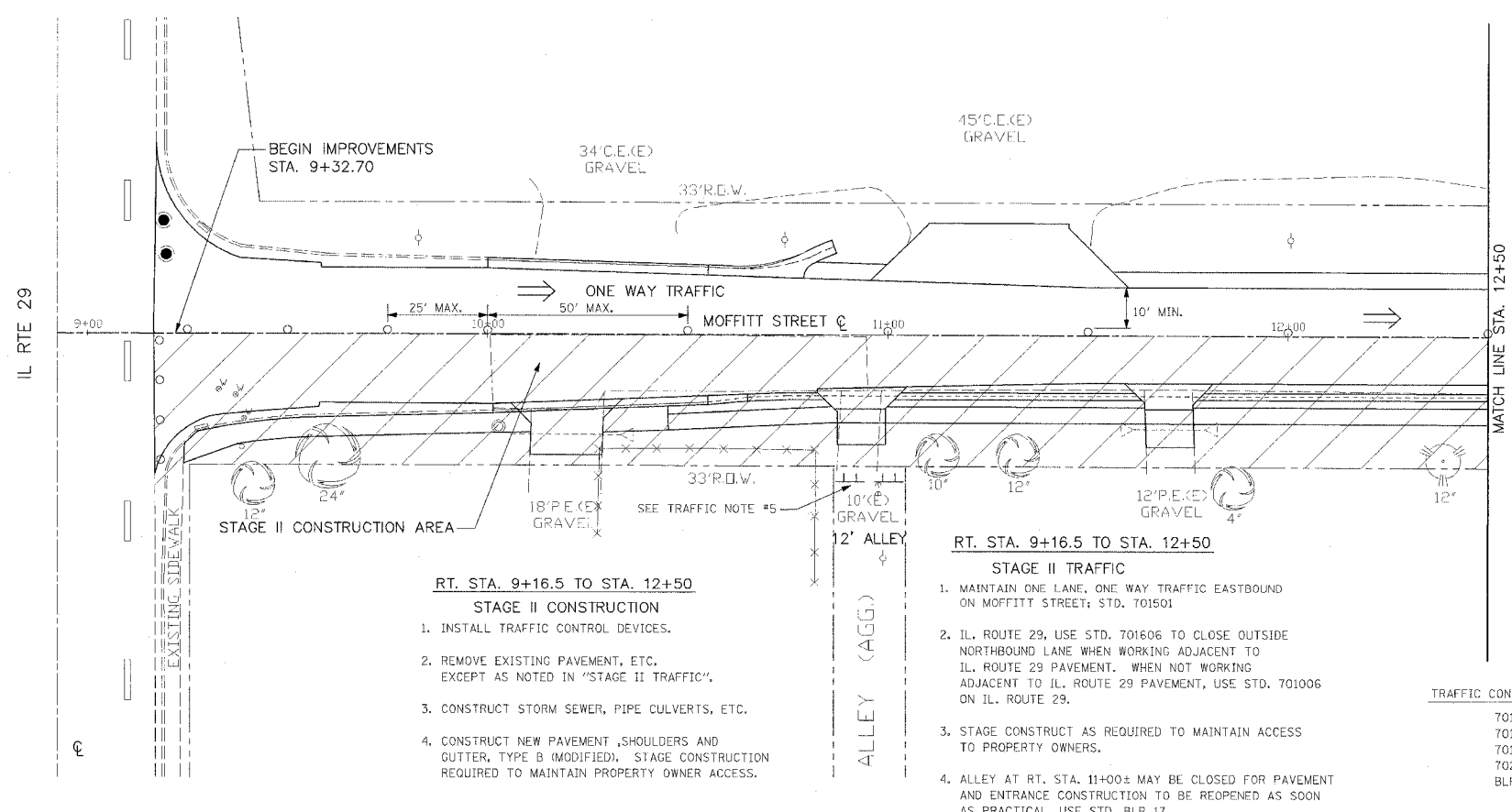
- LT. STA. 9+16.5 TO STA. 12+50**
STAGE I TRAFFIC
1. MAINTAIN ONE LANE, ONE WAY TRAFFIC EASTBOUND ON MOFFITT STREET; STD. 701501
 2. IL. ROUTE 29, USE STD. 701606 TO CLOSE OUTSIDE NORTHBOUND LANE WHEN WORKING ADJACENT TO IL. ROUTE 29 PAVEMENT. WHEN NOT WORKING ADJACENT TO IL. ROUTE 29 PAVEMENT, USE STD. 701006 ON IL. ROUTE 29.
 3. CLOSURE OF SIDE STREETS, USE BARRICADES AS SHOWN STD. BLR 17.
 4. MAINTAIN ACCESS TO PROPERTY OWNERS.

TRAFFIC CONTROL STANDARDS

701006
701501
701606
702001
BLR17



STAGE I MAINTENANCE OF TRAFFIC

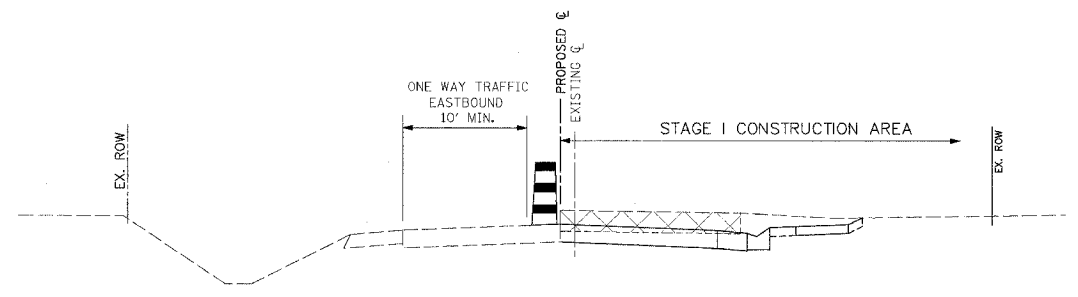


- RT. STA. 9+16.5 TO STA. 12+50**
STAGE II CONSTRUCTION
1. INSTALL TRAFFIC CONTROL DEVICES.
 2. REMOVE EXISTING PAVEMENT, ETC. EXCEPT AS NOTED IN "STAGE II TRAFFIC".
 3. CONSTRUCT STORM SEWER, PIPE CULVERTS, ETC.
 4. CONSTRUCT NEW PAVEMENT, SHOULDERS AND GUTTER, TYPE B (MODIFIED), STAGE CONSTRUCTION REQUIRED TO MAINTAIN PROPERTY OWNER ACCESS.

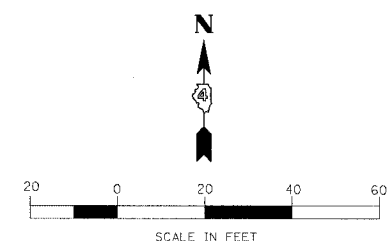
- RT. STA. 9+16.5 TO STA. 12+50**
STAGE II TRAFFIC
1. MAINTAIN ONE LANE, ONE WAY TRAFFIC EASTBOUND ON MOFFITT STREET; STD. 701501
 2. IL. ROUTE 29, USE STD. 701606 TO CLOSE OUTSIDE NORTHBOUND LANE WHEN WORKING ADJACENT TO IL. ROUTE 29 PAVEMENT. WHEN NOT WORKING ADJACENT TO IL. ROUTE 29 PAVEMENT, USE STD. 701006 ON IL. ROUTE 29.
 3. STAGE CONSTRUCT AS REQUIRED TO MAINTAIN ACCESS TO PROPERTY OWNERS.
 4. ALLEY AT RT. STA. 11+00± MAY BE CLOSED FOR PAVEMENT AND ENTRANCE CONSTRUCTION TO BE REOPENED AS SOON AS PRACTICAL, USE STD. BLR 17

TRAFFIC CONTROL STANDARDS

701006
701501
701606
702001
BLR17



STAGE II MAINTENANCE OF TRAFFIC



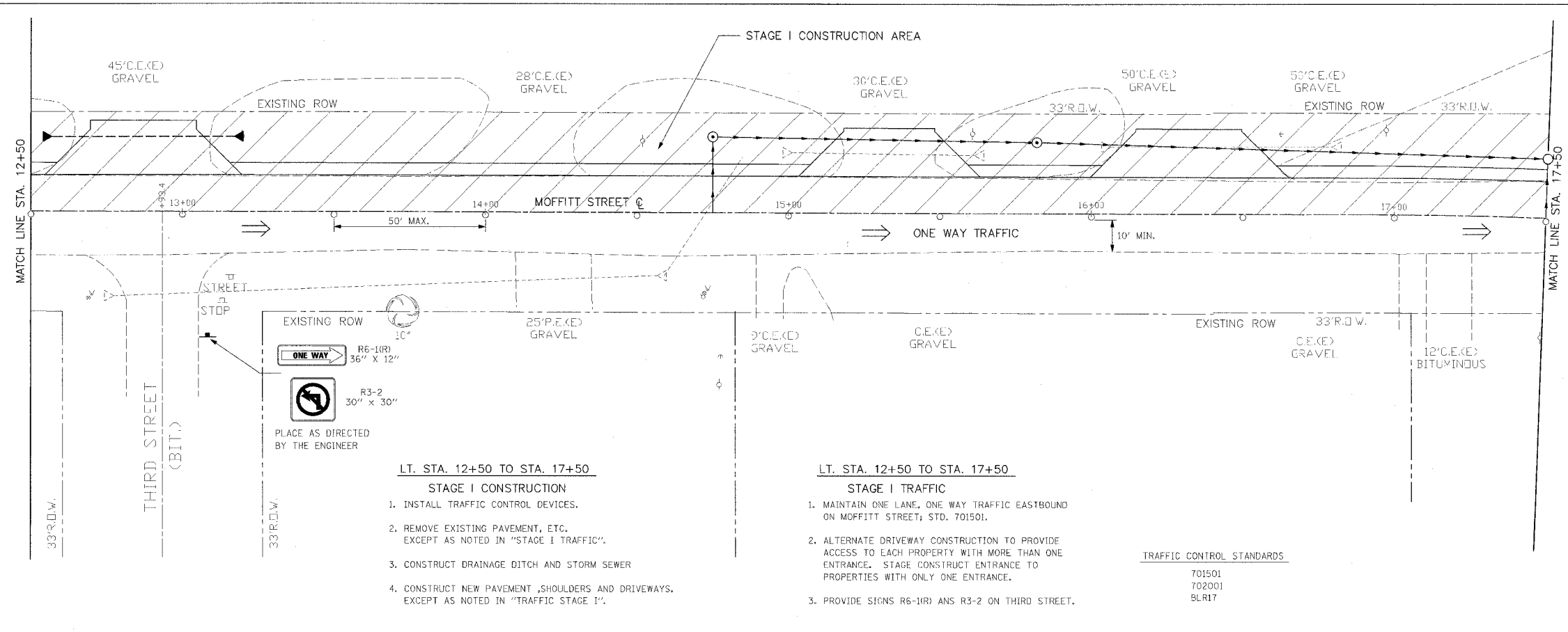
REVISIONS

NAME	DATE

ILLINOIS DEPARTMENT OF TRANSPORTATION
MOFFITT STREET IMPROVEMENTS
MAINTENANCE OF TRAFFIC STAGES I AND II
STA. 9+16.5 TO STA. 12+50

DATE: 12/05/06
 DRAWN BY: DLC
 CHECKED BY: REW

F.A.U. RTE.	SECTION	COUNTY	TOTAL SHEETS	SHEET NO.
6579	05-00035-00-RR	PEORIA	31	9
STA. 12+50 TO STA. 17+50		FED. ROAD DIST. NO. 4 ILLINOIS FED. AID PROJECT		

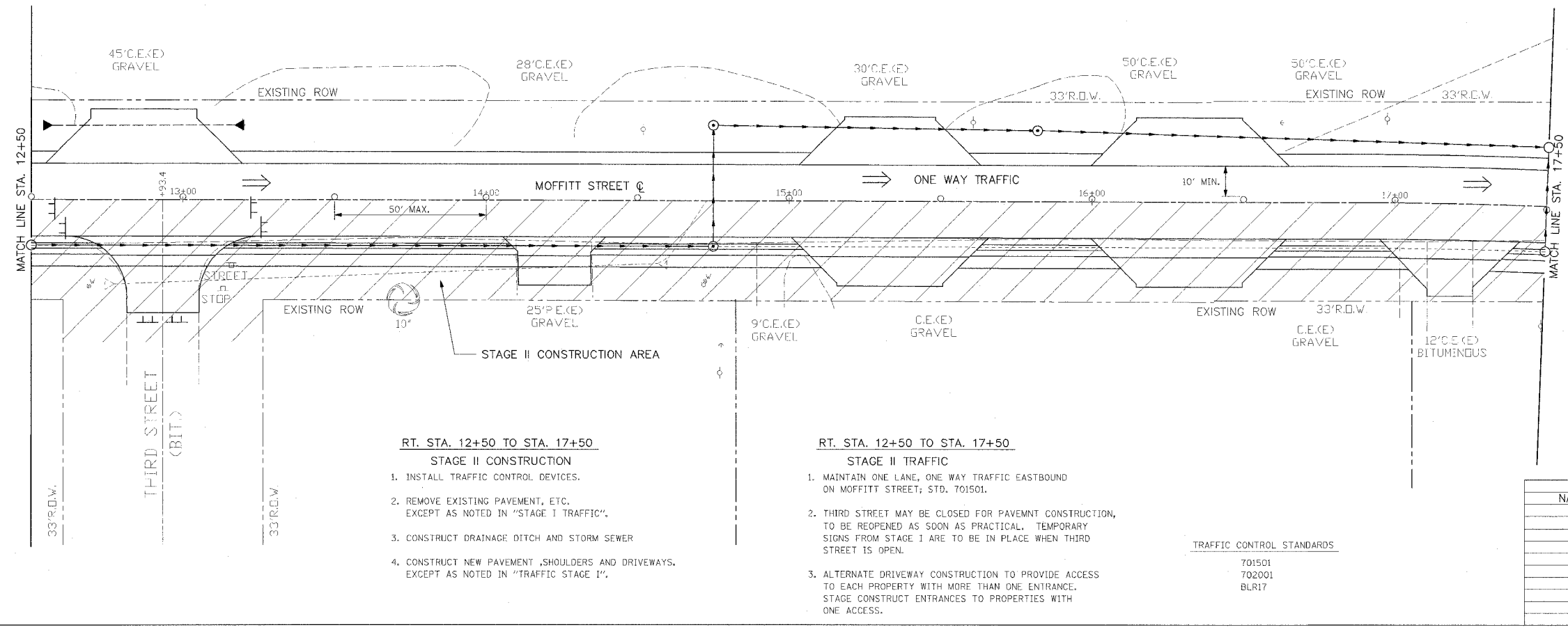


- LT. STA. 12+50 TO STA. 17+50**
- STAGE I CONSTRUCTION**
1. INSTALL TRAFFIC CONTROL DEVICES.
 2. REMOVE EXISTING PAVEMENT, ETC. EXCEPT AS NOTED IN "STAGE I TRAFFIC".
 3. CONSTRUCT DRAINAGE DITCH AND STORM SEWER
 4. CONSTRUCT NEW PAVEMENT, SHOULDERS AND DRIVEWAYS. EXCEPT AS NOTED IN "TRAFFIC STAGE I".

- LT. STA. 12+50 TO STA. 17+50**
- STAGE I TRAFFIC**
1. MAINTAIN ONE LANE, ONE WAY TRAFFIC EASTBOUND ON MOFFITT STREET; STD. 701501.
 2. ALTERNATE DRIVEWAY CONSTRUCTION TO PROVIDE ACCESS TO EACH PROPERTY WITH MORE THAN ONE ENTRANCE. STAGE CONSTRUCT ENTRANCE TO PROPERTIES WITH ONLY ONE ENTRANCE.
 3. PROVIDE SIGNS R6-1(R) AND R3-2 ON THIRD STREET.

TRAFFIC CONTROL STANDARDS

701501
702001
BLR17

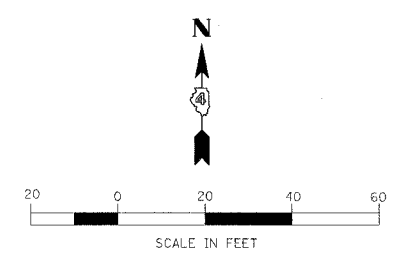


- RT. STA. 12+50 TO STA. 17+50**
- STAGE II CONSTRUCTION**
1. INSTALL TRAFFIC CONTROL DEVICES.
 2. REMOVE EXISTING PAVEMENT, ETC. EXCEPT AS NOTED IN "STAGE I TRAFFIC".
 3. CONSTRUCT DRAINAGE DITCH AND STORM SEWER
 4. CONSTRUCT NEW PAVEMENT, SHOULDERS AND DRIVEWAYS. EXCEPT AS NOTED IN "TRAFFIC STAGE I".

- RT. STA. 12+50 TO STA. 17+50**
- STAGE II TRAFFIC**
1. MAINTAIN ONE LANE, ONE WAY TRAFFIC EASTBOUND ON MOFFITT STREET; STD. 701501.
 2. THIRD STREET MAY BE CLOSED FOR PAVEMENT CONSTRUCTION, TO BE REOPENED AS SOON AS PRACTICAL. TEMPORARY SIGNS FROM STAGE I ARE TO BE IN PLACE WHEN THIRD STREET IS OPEN.
 3. ALTERNATE DRIVEWAY CONSTRUCTION TO PROVIDE ACCESS TO EACH PROPERTY WITH MORE THAN ONE ENTRANCE. STAGE CONSTRUCT ENTRANCES TO PROPERTIES WITH ONE ACCESS.

TRAFFIC CONTROL STANDARDS

701501
702001
BLR17



REVISIONS	
NAME	DATE

ILLINOIS DEPARTMENT OF TRANSPORTATION

MOFFITT STREET IMPROVEMENTS

MAINTENANCE OF TRAFFIC STAGES I AND II

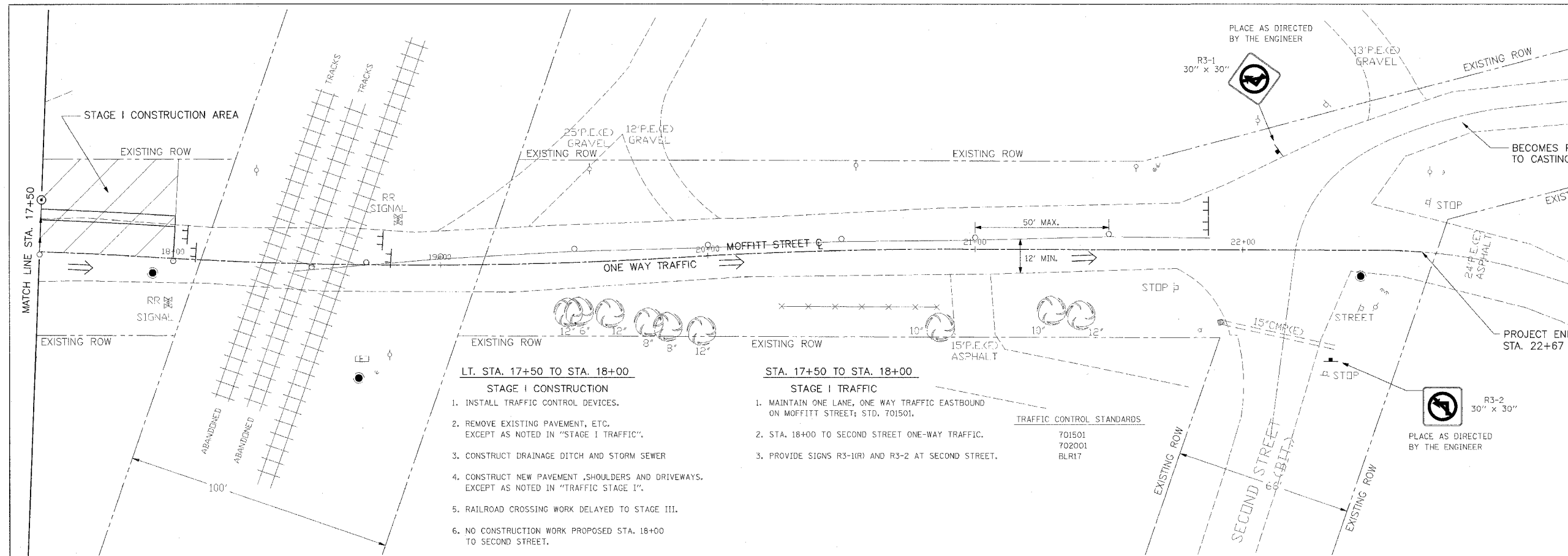
STA. 12+50 TO STA. 17+50

DATE 12/05/06

DRAWN BY DLC
CHECKED BY REW

89370

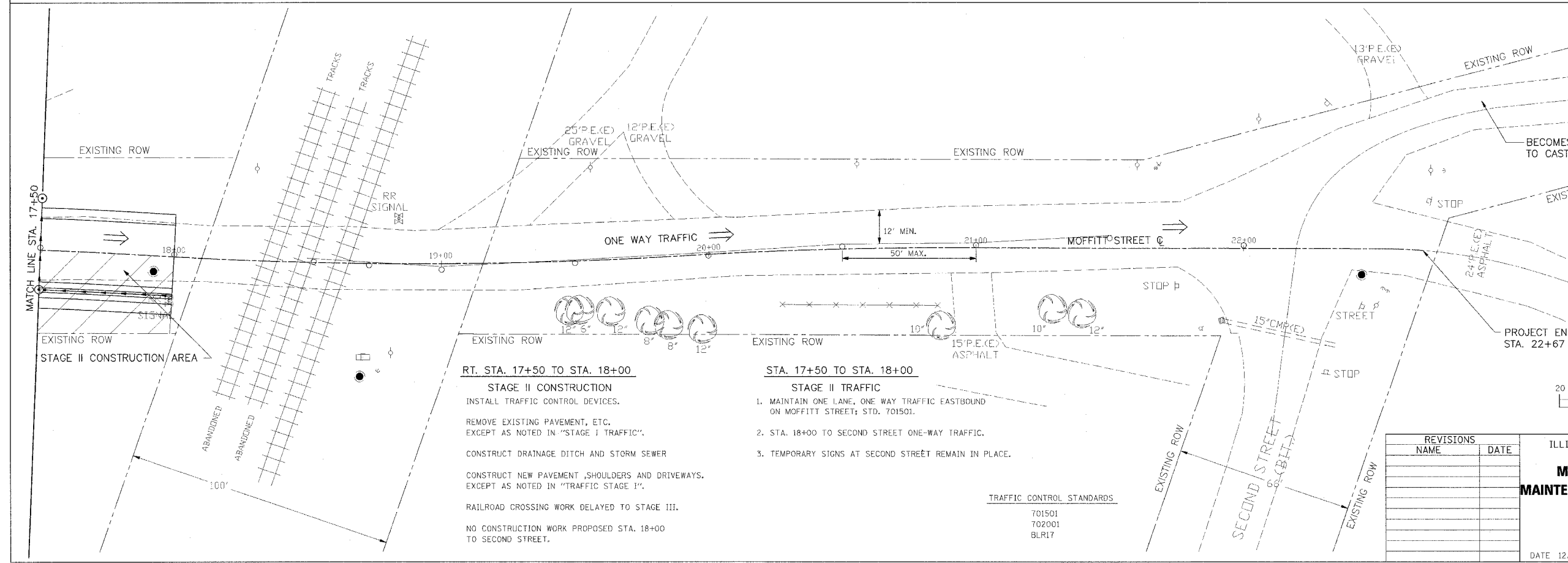
F.A.U. SECTION	COUNTY	TOTAL SHEETS	SHEET NO.
6579 05-00035-00-RP	PEORIA	31	10
STA. 17+50 TO STA. 22+67		FED. ROAD DIST. NO. 4 ILLINOIS FED. AID PROJECT	



- LT. STA. 17+50 TO STA. 18+00**
STAGE I CONSTRUCTION
1. INSTALL TRAFFIC CONTROL DEVICES.
 2. REMOVE EXISTING PAVEMENT, ETC. EXCEPT AS NOTED IN "STAGE I TRAFFIC".
 3. CONSTRUCT DRAINAGE DITCH AND STORM SEWER
 4. CONSTRUCT NEW PAVEMENT, SHOULDERS AND DRIVEWAYS. EXCEPT AS NOTED IN "TRAFFIC STAGE I".
 5. RAILROAD CROSSING WORK DELAYED TO STAGE III.
 6. NO CONSTRUCTION WORK PROPOSED STA. 18+00 TO SECOND STREET.

- STA. 17+50 TO STA. 18+00**
STAGE I TRAFFIC
1. MAINTAIN ONE LANE, ONE WAY TRAFFIC EASTBOUND ON MOFFITT STREET; STD. 701501.
 2. STA. 18+00 TO SECOND STREET ONE-WAY TRAFFIC.
 3. PROVIDE SIGNS R3-1(R) AND R3-2 AT SECOND STREET.

TRAFFIC CONTROL STANDARDS
 701501
 702001
 BLR17



- RT. STA. 17+50 TO STA. 18+00**
STAGE II CONSTRUCTION
1. INSTALL TRAFFIC CONTROL DEVICES.
 2. REMOVE EXISTING PAVEMENT, ETC. EXCEPT AS NOTED IN "STAGE I TRAFFIC".
 3. CONSTRUCT DRAINAGE DITCH AND STORM SEWER
 4. CONSTRUCT NEW PAVEMENT, SHOULDERS AND DRIVEWAYS. EXCEPT AS NOTED IN "TRAFFIC STAGE I".
 5. RAILROAD CROSSING WORK DELAYED TO STAGE III.
 6. NO CONSTRUCTION WORK PROPOSED STA. 18+00 TO SECOND STREET.

- STA. 17+50 TO STA. 18+00**
STAGE II TRAFFIC
1. MAINTAIN ONE LANE, ONE WAY TRAFFIC EASTBOUND ON MOFFITT STREET; STD. 701501.
 2. STA. 18+00 TO SECOND STREET ONE-WAY TRAFFIC.
 3. TEMPORARY SIGNS AT SECOND STREET REMAIN IN PLACE.

TRAFFIC CONTROL STANDARDS
 701501
 702001
 BLR17

REVISIONS	
NAME	DATE

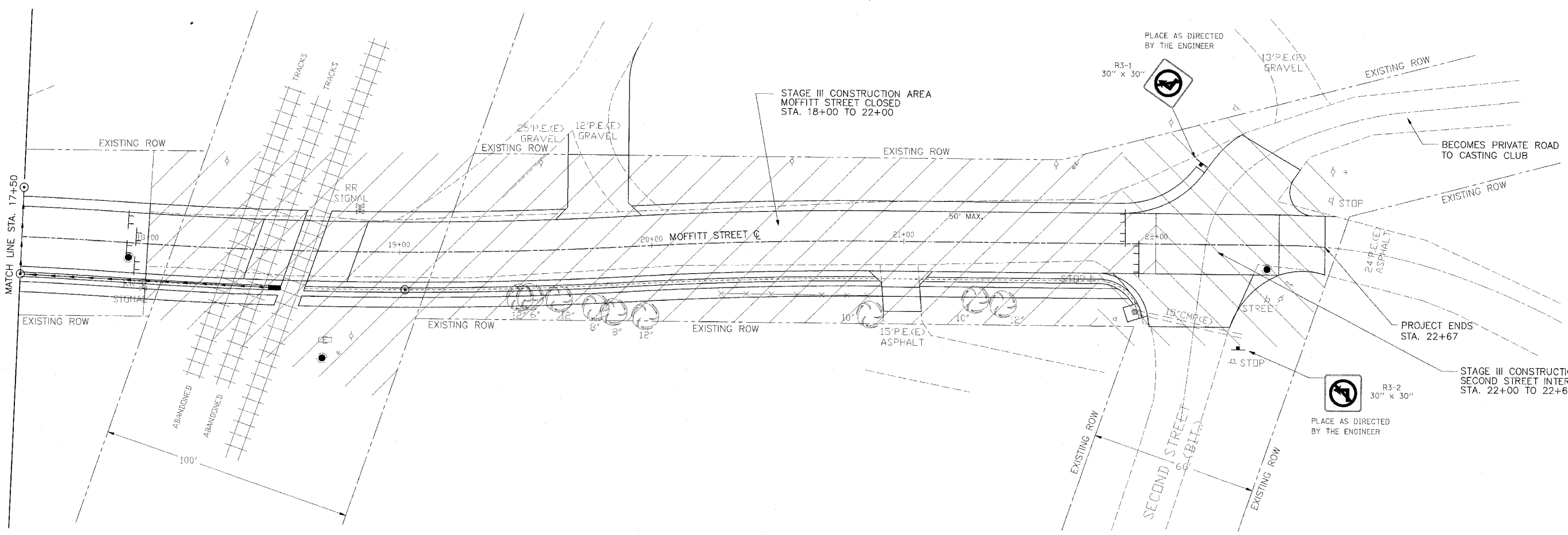
ILLINOIS DEPARTMENT OF TRANSPORTATION
MOFFITT STREET IMPROVEMENTS
MAINTENANCE OF TRAFFIC STAGES I AND II
STA. 17+50 TO STA. 22+67

DATE 12/05/06

DRAWN BY DLC
 CHECKED BY REW

89370

P.A.U. RTE.	SECTION	COUNTY	TOTAL SHEETS	SHEET NO.
6579 D5-00035-00-RP		PEORIA	31	11
STA. 17+50		TO STA. 22+67		
FED. ROAD DIST. NO. 4		ILLINOIS FED. AID PROJECT		



STA. 18+00 TO STA. 22+67

STAGE III CONSTRUCTION

1. MOFFITT STREET OPEN TO TWO LANE, TWO-WAY TRAFFIC FROM IL. ROUTE 29 TO STA. 18+00.
2. MOFFITT STREET CLOSED FROM STA. 18+00 TO STA. 22+00.
3. REMOVE RAILROAD TRACK AND ABANDONED CROSSINGS.
4. REMOVE EXISTING PAVEMENT, ETC. STA. 18+00 TO STA. 22+00.
5. CONSTRUCT NEW PAVEMENT, SHOULDER, GUTTER, AND DRAINAGE WORK STA. 18+00 TO 22+00.

SECOND STREET INTERSECTION

6. STAGE CONSTRUCT ENTRANCE LT. STA. 22+20.
7. COMPLETE PCC PAVEMENT STA. 22+00 TO STA. 22+48.85. STAGE CONSTRUCT TO MAINTAIN TRAFFIC TO THE NATURE PARK.
8. RESURFACE STA. 22+48.85 TO STA. 22+67 AND SECOND STREET.
9. COMPLETE ANY REMAINING DRAINAGE WORK.
10. OPEN TO TWO LANE, TWO-WAY TRAFFIC UPON COMPLETION OF ALL WORK AT SECOND STREET AND THE RAILROAD CROSSING.

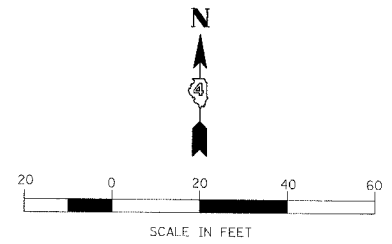
STA. 18+00 TO STA. 22+67

STAGE III TRAFFIC

1. MOFFITT STREET CLOSED STA. 18+00 TO STA. 22+00. STD. BLR 17
2. STAGE CONSTRUCTION ON SECOND STREET. STD. 701501
3. UPON COMPLETION OF STAGE III, REMOVE ALL TRAFFIC CONTROL DEVICES, TEMPORARY SIGNS, OPEN MOFFITT STREET TO TWO LANE, TWO-WAY TRAFFIC.
4. ENTRANCE AT LT. STA. 19+75± CLOSED FOR CONSTRUCTION.
5. ENTRANCE AT RT. STA. 21+00± CLOSED FOR CONSTRUCTION.

TRAFFIC CONTROL STANDARDS

701501
BLR17



REVISIONS	
NAME	DATE

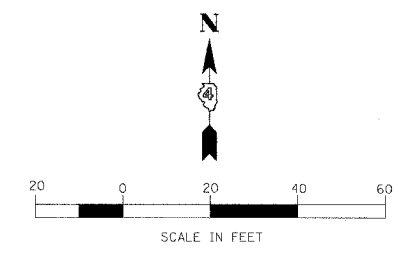
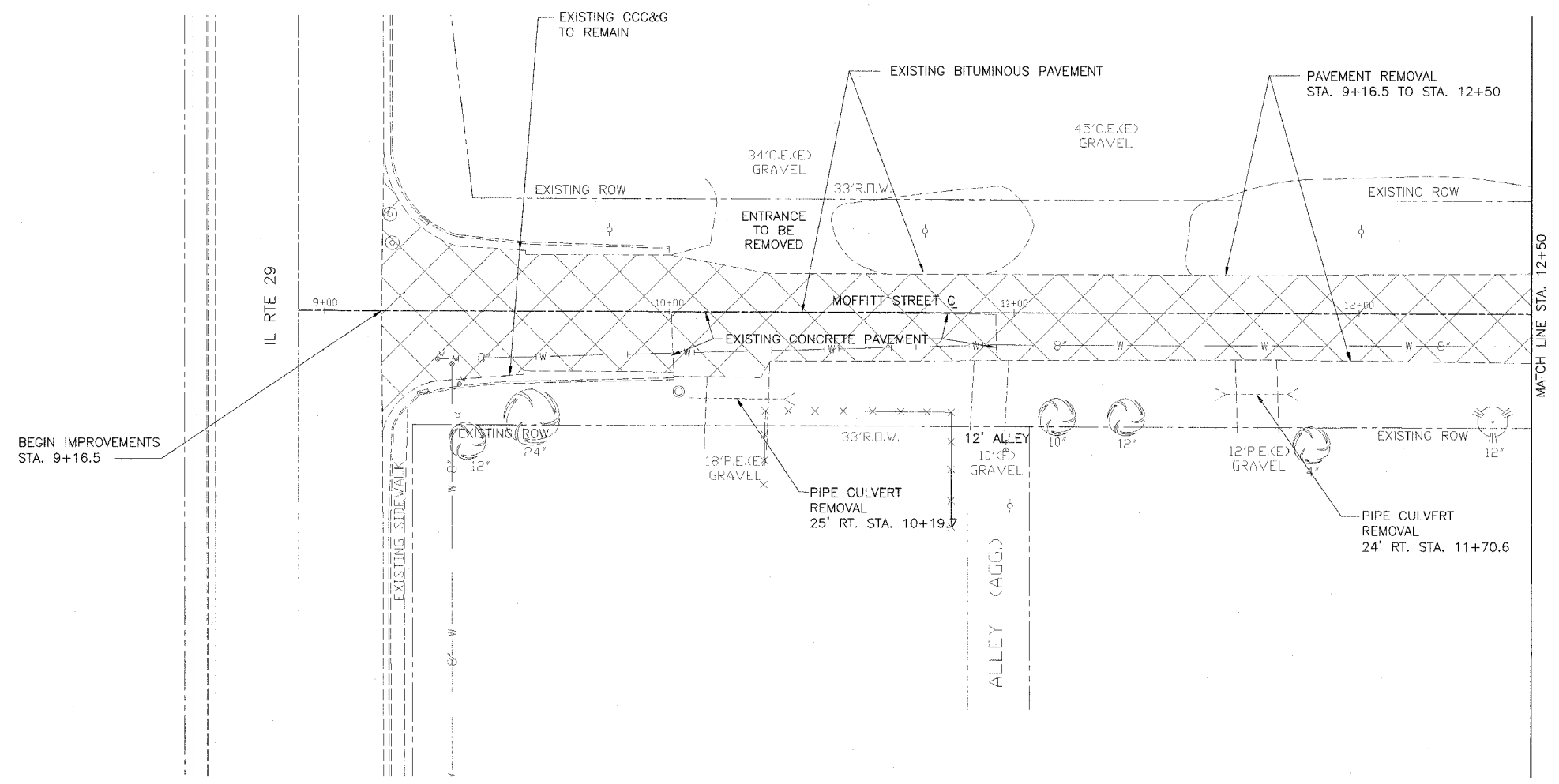
ILLINOIS DEPARTMENT OF TRANSPORTATION
MOFFITT STREET IMPROVEMENTS
MAINTENANCE OF TRAFFIC STAGE III
STA. 18+00 TO STA. 22+67

DATE 12/05/06
 DRAWN BY DLC
 CHECKED BY REW

I:\PROJECTS\2006\12\22\2206112013.MXD

29370

F.A.U. RTE.	SECTION	COUNTY	TOTAL SHEETS	SHEET NO.
6579	05-00035-00-RP	PEORIA	31	12
STA. 9+16.5		TO STA. 12+50		
FED. ROAD DIST. NO. 4 ILLINOIS FED. AID PROJECT				

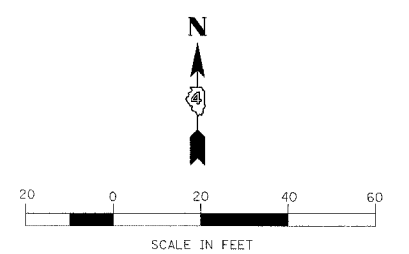
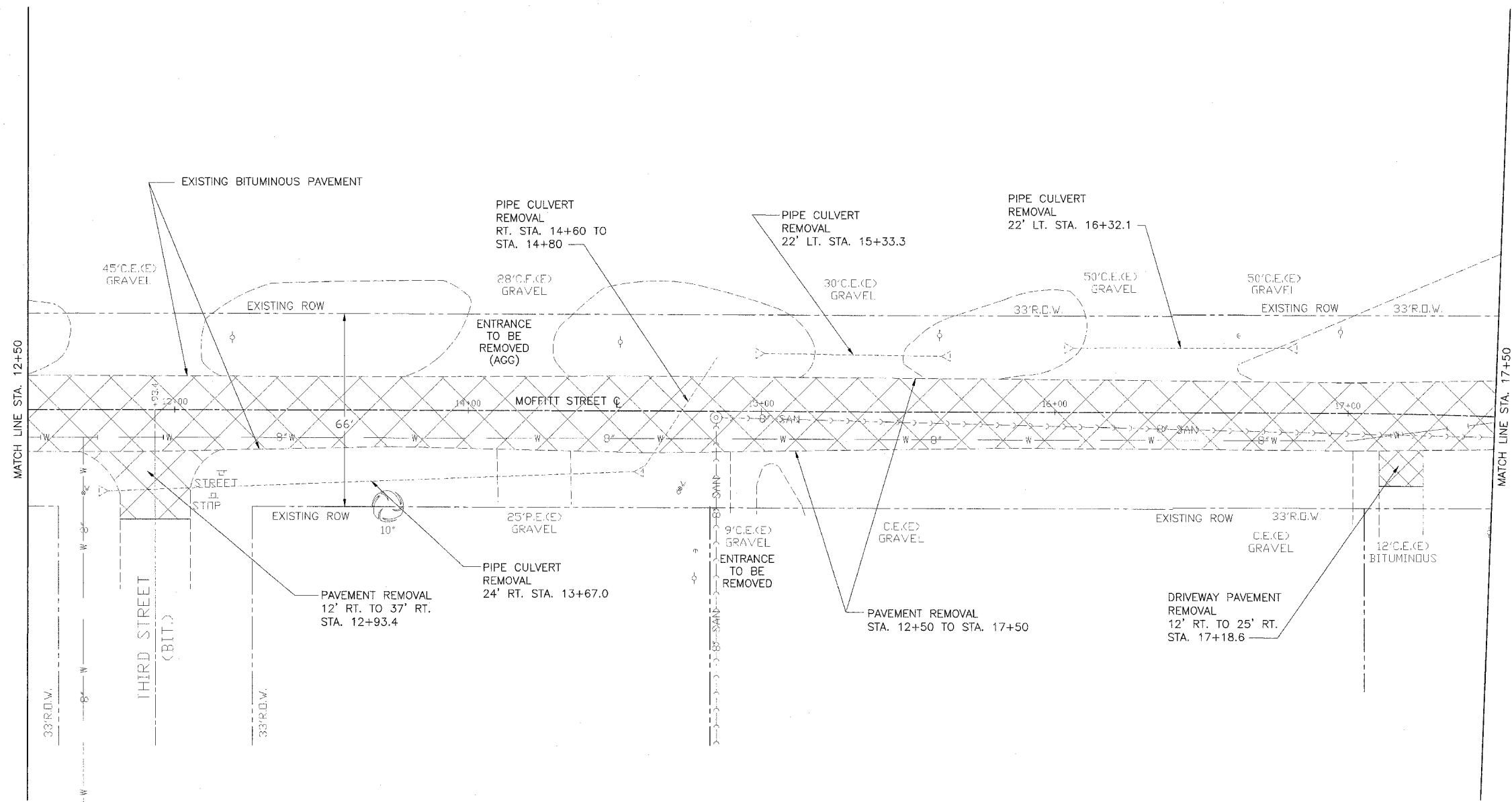


REVISIONS		ILLINOIS DEPARTMENT OF TRANSPORTATION
NAME	DATE	
		MOFFITT STREET IMPROVEMENTS REMOVAL PLAN STA. 9 + 16.5 TO STA. 12 + 50 DRAWN BY: DLC CHECKED BY: REW DATE 12/05/06

DRAWN: 12/05/06 4:09:21 PM

89370

F.A.U. RTE.	SECTION	COUNTY	TOTAL SHEETS	SHEET NO.
6579	05-00035-00-RP	PEORIA	31	13
STA. 12+50		TO STA. 17+50		
FED. ROAD DIST. NO. 4 ILLINOIS FED. AID PROJECT				



REVISIONS	
NAME	DATE

ILLINOIS DEPARTMENT OF TRANSPORTATION

**MOFFITT STREET IMPROVEMENTS
REMOVAL PLAN
STA. 12+50 TO STA. 17+50**

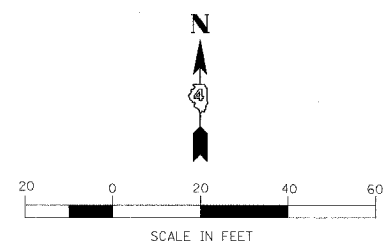
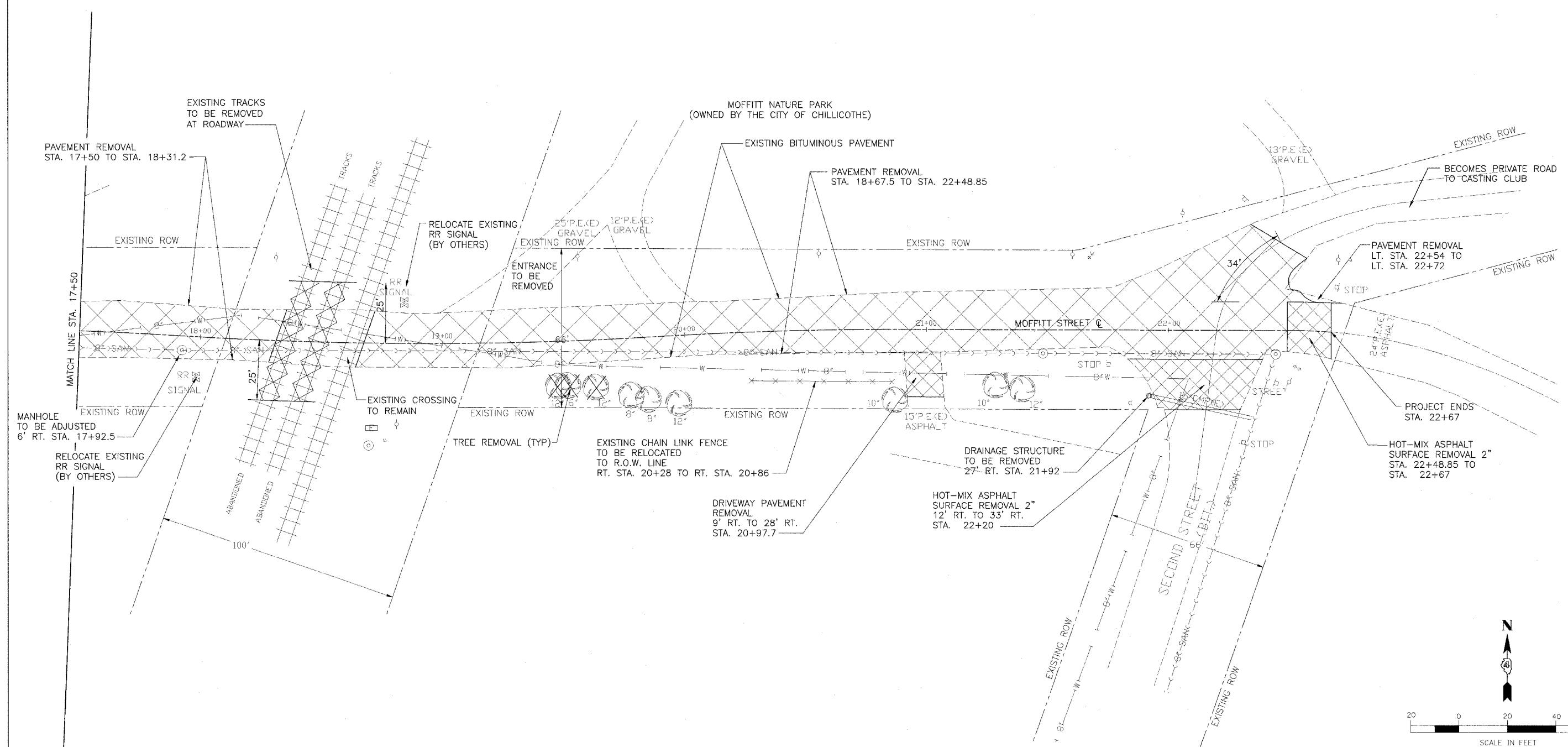
DATE 12/05/06

DRAWN BY DLC
CHECKED BY REW

8/17/06 12:00 PM

89370

F.A.U. RTE.	SECTION	COUNTY	TOTAL SHEETS	SHEET NO.
6579	05-00035-00-RP	PEORIA	31	14
STA. 17+50		TO STA. 22+67		
FED. ROAD DIST. NO. 4 ILLINOIS FED. AID PROJECT				

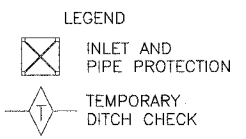
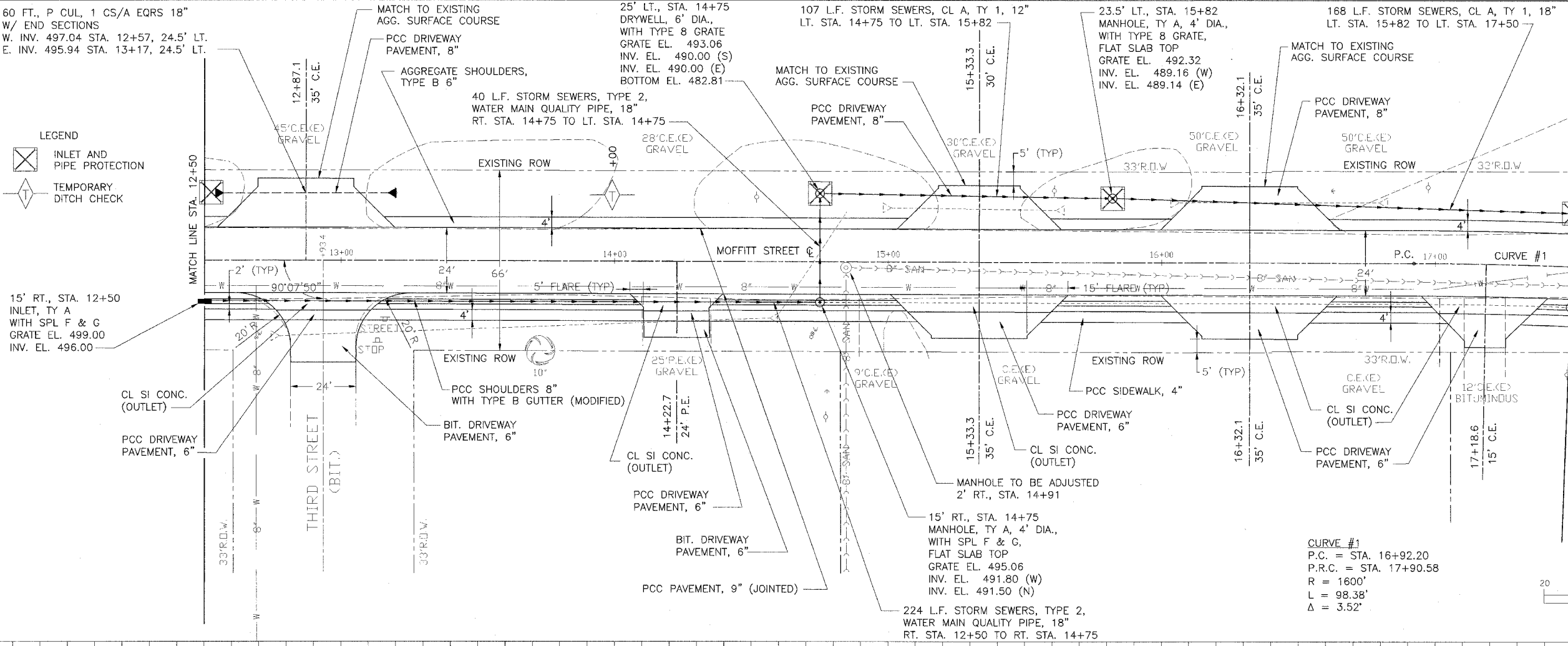


REVISIONS	
NAME	DATE

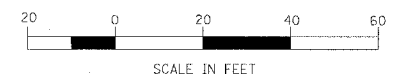
ILLINOIS DEPARTMENT OF TRANSPORTATION
**MOFFITT STREET IMPROVEMENTS
 REMOVAL PLAN**
STA. 17 + 50 TO STA. 22 + 67
 DATE 12/05/06
 DRAWN BY DLC
 CHECKED BY REW

PRINTED ON 12/22/2006 4:10:06 PM

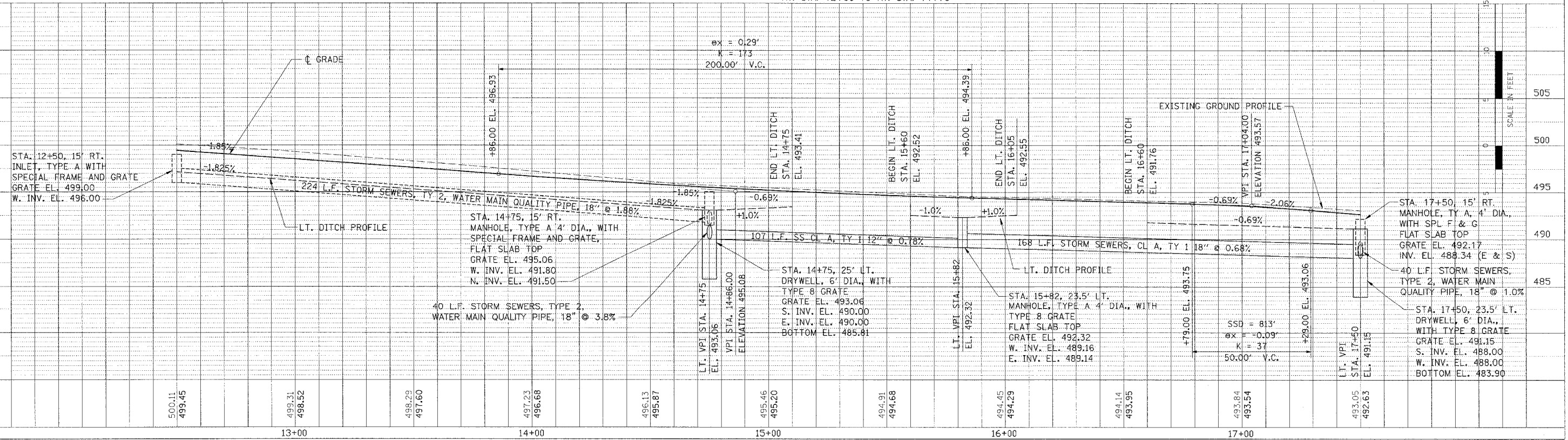
F.A.U. R.T.E.	SECTION	COUNTY	TOTAL SHEETS	SHEET NO.
6579 05-00035-00-RF	PEORIA		31	16
STA. 12+50		TO STA. 17+50		
FED. ROAD DIST. NO. 4 ILLINOIS FED. AID PROJECT				



15' RT., STA. 12+50
INLET, TY A
WITH SPL F & G
GRATE EL. 499.00
INV. EL. 496.00



CURVE #1
P.C. = STA. 16+92.20
P.R.C. = STA. 17+90.58
R = 1600'
L = 98.38'
Δ = 3.52'

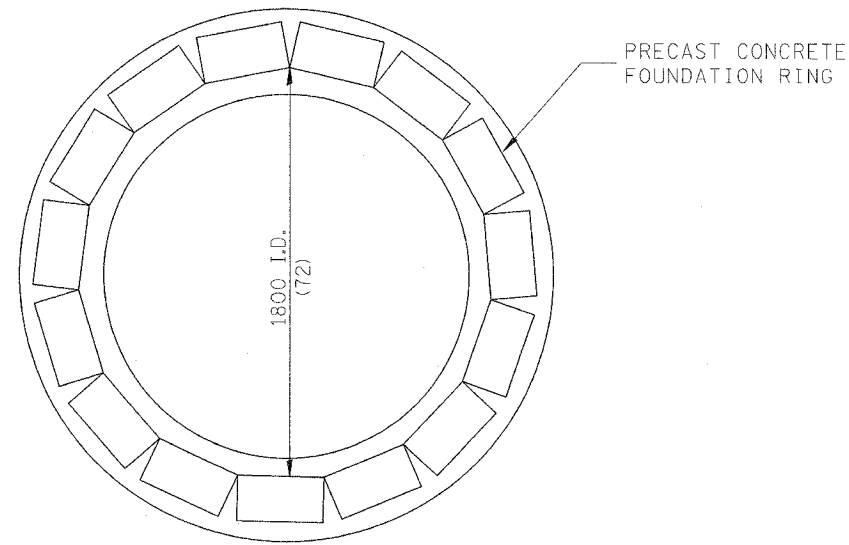


MOFFITT STREET IMPROVEMENTS - PLAN AND PROFILE - STA. 12+50 TO STA. 17+50

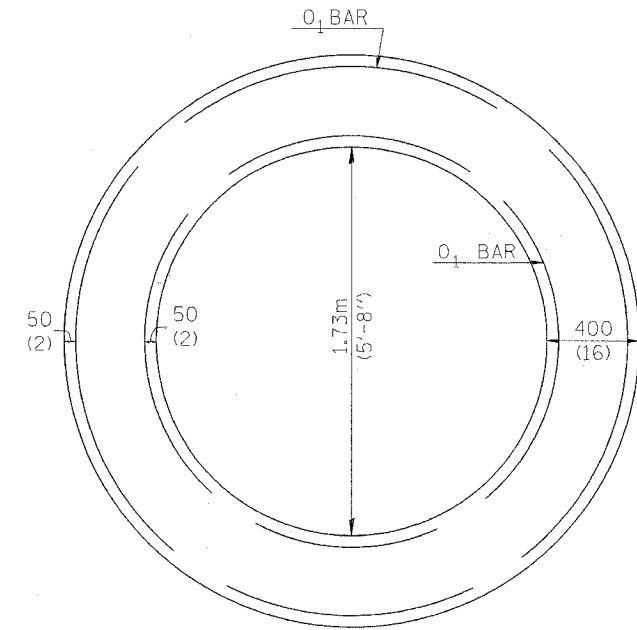
DATE	BY

DATE	BY

F.A.U. RTE.	SECTION	COUNTY	TOTAL SHEETS	SHEET NO.
6579	05-00035-00-RF	PEORIA	31	18
STA.		TO STA.		
FED. ROAD DIST. NO. 4 ILLINOIS FED. AID PROJECT				

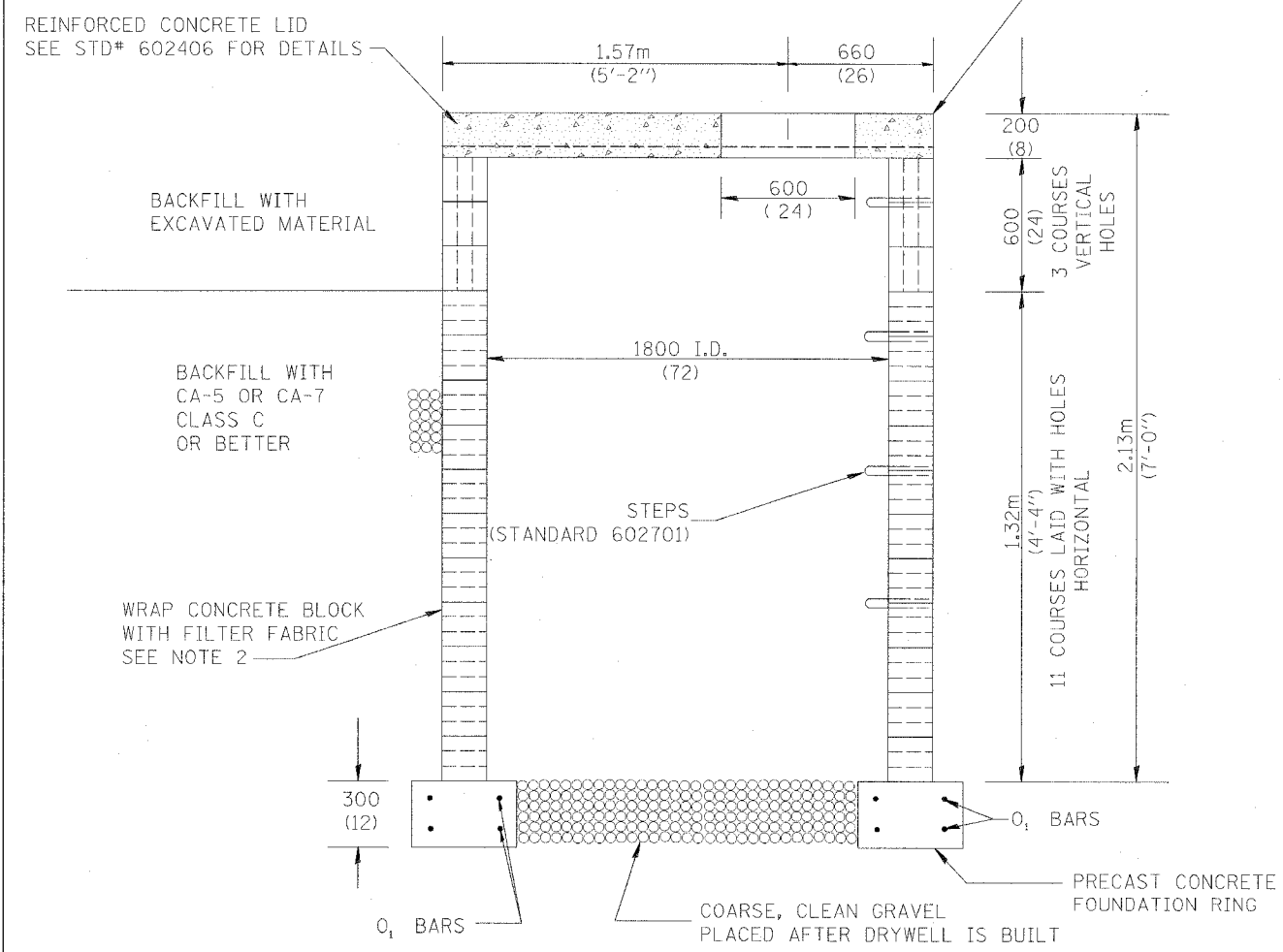


PLAN



PLAN

(SHOWING REINFORCEMENT IN CONCRETE RING FOUNDATION)



ELEVATION

GENERAL NOTES:

- The concrete blocks shall be 3 cell - 200x200x400(8"x8"x16"). The top 3 courses of blocks shall be laid with the holes vertical. All other blocks shall be laid with the holes horizontal. All joints shall be mortared.
- The outside of the drywell shall be wrapped in a filter fabric conforming to Article 1080.03 of the Standard Specifications using a two (2) foot overlap at seam.
- Drywells at LT. STA. 14+75 and LT. STA. 17+50 to be provided with a TYPE 8 GRATE. (Standard 604036)
Drywell at RT. STA. 19+02 to be provided with a SPECIAL FRAME AND GRATE.
- The excavation shall be backfilled with CA-5 or CA-7 Class C below the top three courses of block. Quantity not shown in Bill of Materials. Included in Cost of Drywell.
- See Plans for a Storm Sewer with the Drywell.

BILL OF MATERIALS FOR 1 DRYWELL	
CONCRETE BLOCKS	= 133 EA.
FILTER FABRIC	= (29 SQ YD)
SPECIAL FRAME AND GRATE OR TYPE 8 GRATE	= 1 EA.
STEPS PER STD# 602701	= 6 EA.
GRAVEL	= (1 CU YD)
CONCRETE LID PER STD# 602406	= 1 EA.
CONCRETE FOUNDATION RING	
CLASS PC CONCRETE	= (1.1 CU YD)
2 #15(4)'0' BARS LENGTH = (25')	= (35 LBS)
2 #15(4)'0' BARS LENGTH = (19')	= (25 LBS)

All dimensions are in millimeters (inches) unless otherwise noted.

REVISIONS	
NAME	DATE

ILLINOIS DEPARTMENT OF TRANSPORTATION

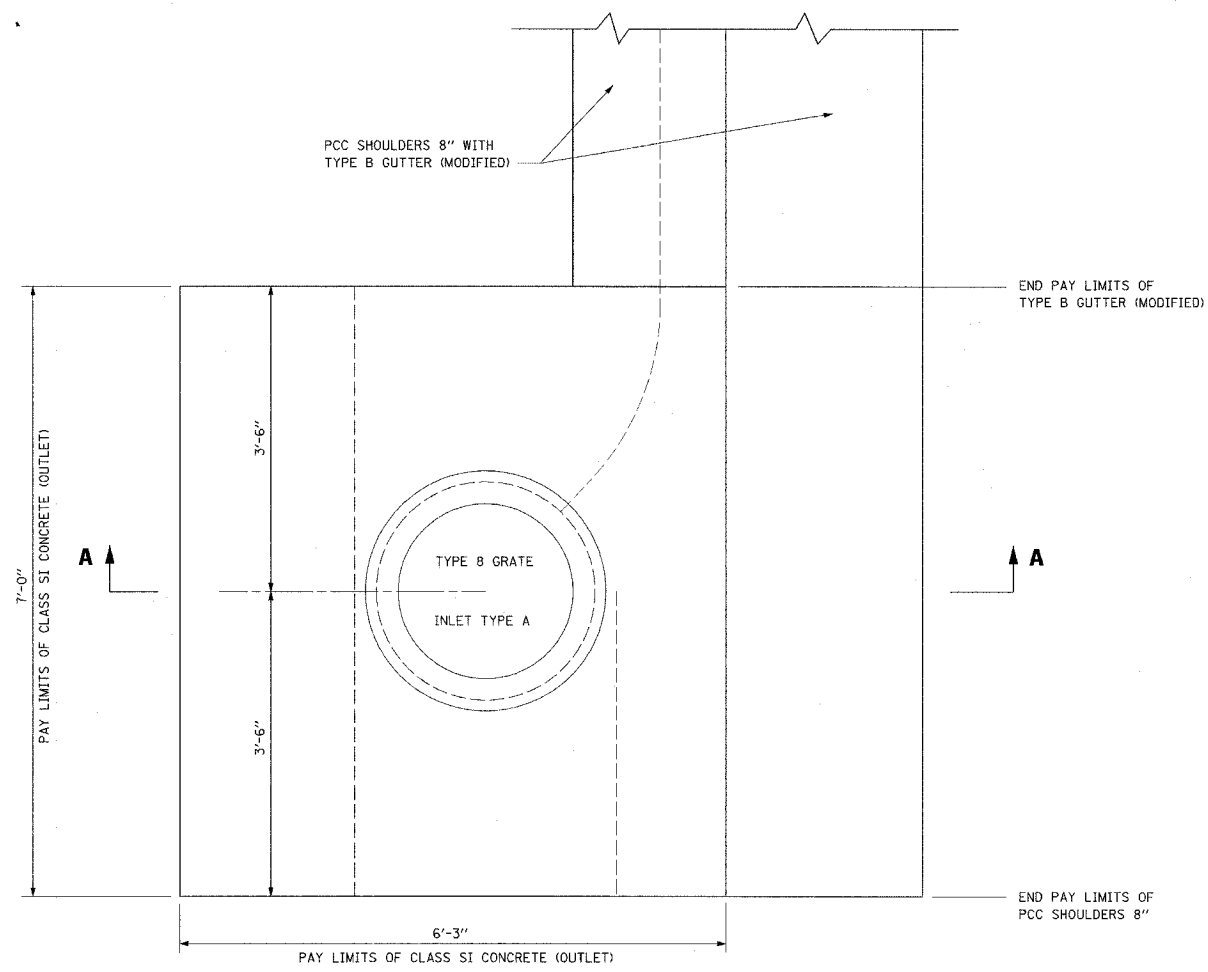
**MOFFITT STREET IMPROVEMENTS
DETAIL - DRYWELL**

DRAWN BY DLC
CHECKED BY REW

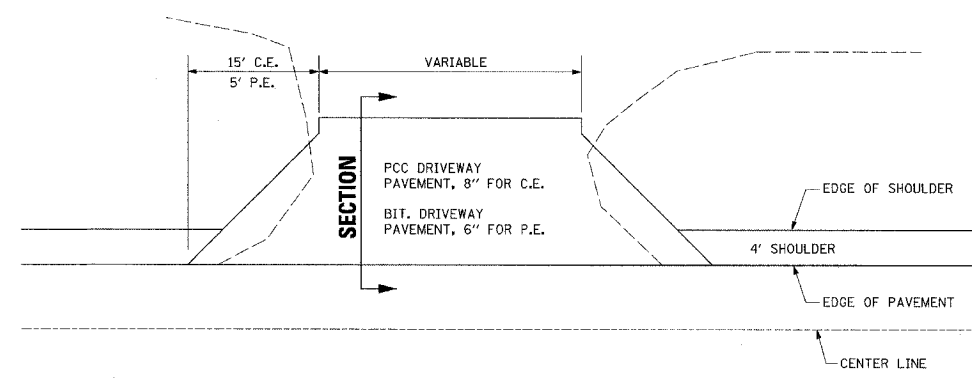
DATE 12/05/06

89370

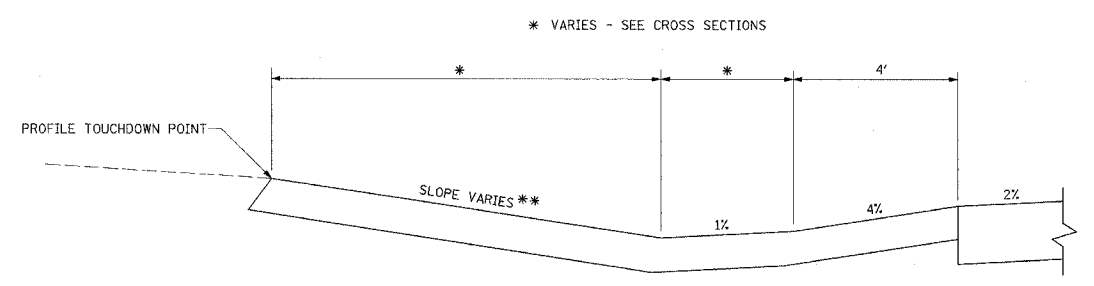
F.A.U. RTE.	SECTION	COUNTY	TOTAL SHEETS	SHEET NO.
6579	05-00035-00-RP	PEORIA	31	19
STA.		TO STA.		
FED. ROAD DIST. NO. 4		ILLINOIS FED. AID PROJECT		



PLAN VIEW

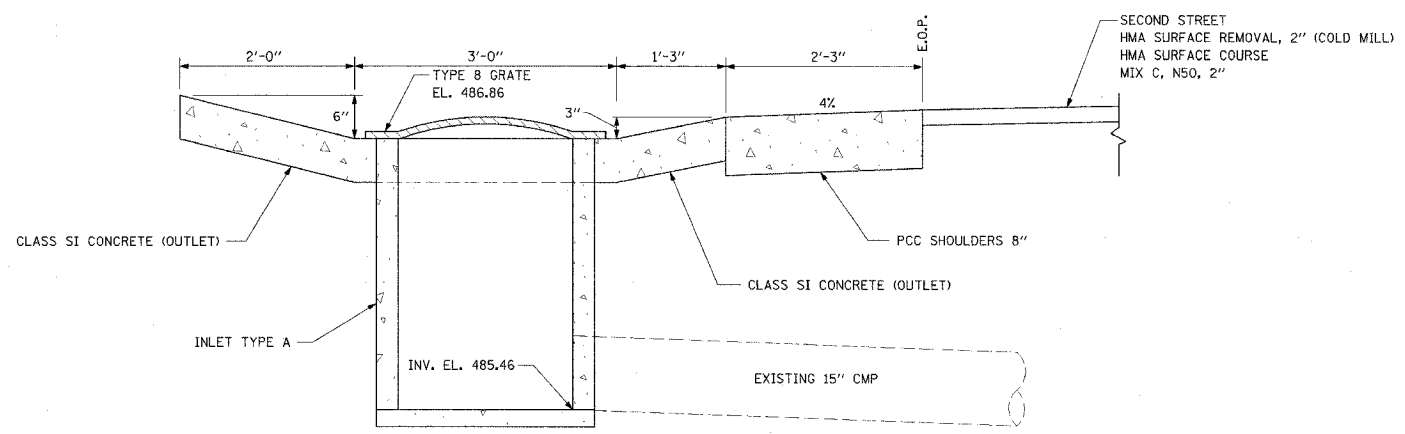


PLAN



SECTION

DETAIL - LEFT SIDE ENTRANCES
NOT TO SCALE



NOTE: VERIFY PIPE SIZE AND ELEVATIONS PRIOR TO ORDERING INLET.

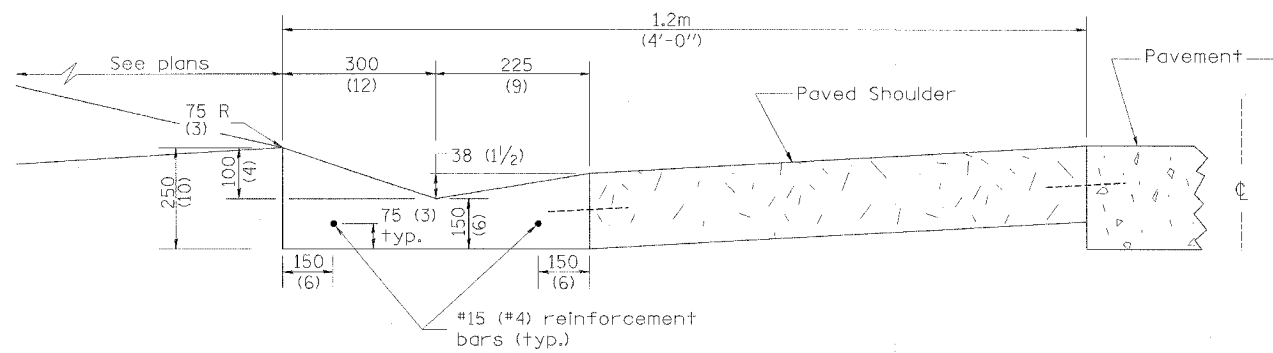
SECTION A-A
DETAIL - INLET TYPE A
26.4' RT., STA. 21+94

REVISIONS	
NAME	DATE

ILLINOIS DEPARTMENT OF TRANSPORTATION
MOFFITT STREET IMPROVEMENTS
DETAIL - INLET TYPE A
26.4' RT., STA. 21+94 AND ENTRANCES
DATE 12/05/06
DRAWN BY DLC
CHECKED BY REW

D:\CADD\PROJECTS\05-00035-00-RP\11-05-06-19.dwg

F.A.U. RTE.	SECTION	COUNTY	TOTAL SHEETS	SHEET NO.
6579 05-00035-00-RP		PEORIA	31	20
STA.		TO STA.		
FED. ROAD DIST. NO. 4		ILLINOIS FED. AID PROJECT		

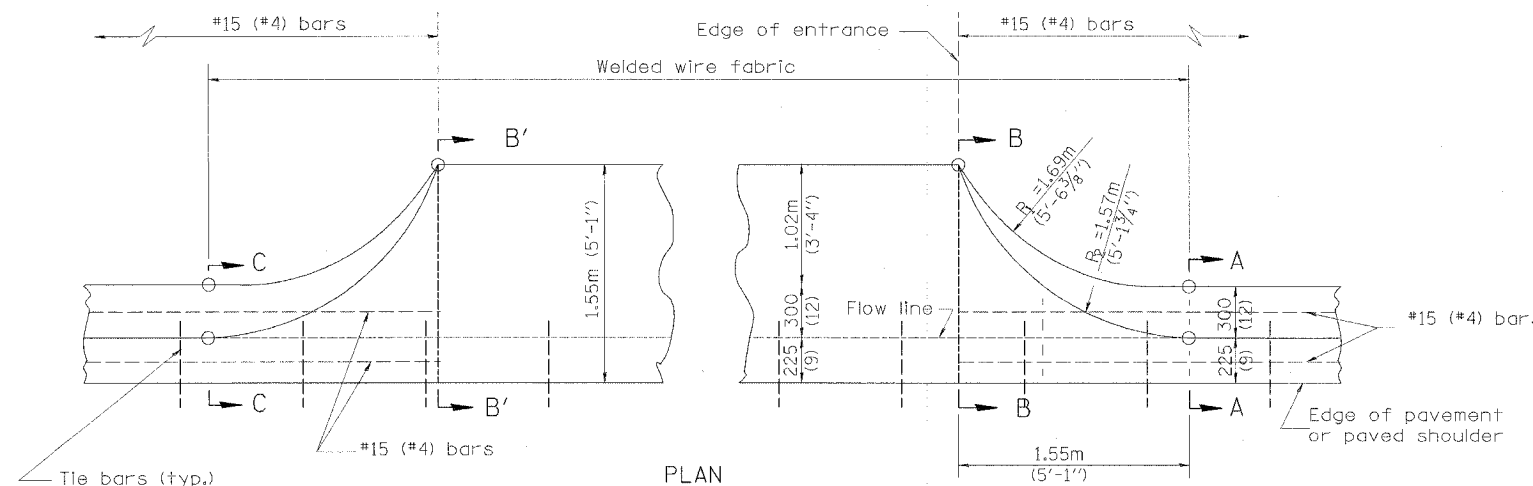


SHOULDER EDGE GUTTER

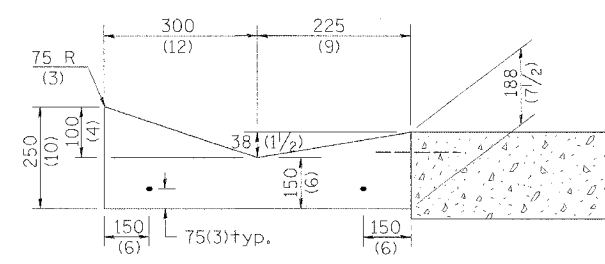
TYPE B GUTTER (MODIFIED)

GENERAL NOTES:

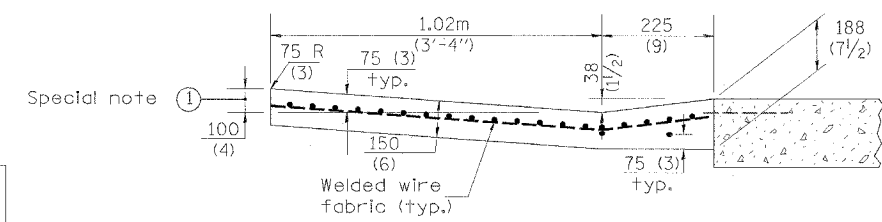
1. TYPE B GUTTER (MODIFIED) shall conform to the applicable portions of Section 606.
2. Tie bars shall be No. 20 (No. 6) at 600mm (24") centers unless otherwise shown.
3. Gutter, gutter inlets, gutter outlets, and gutter entrances shall be tied to rigid pavement in accordance with details shown on Standard 420001.
4. Joints shall be constructed in accordance with Article 606.01.
5. Welded wire fabric shall conform to Article 1006.10(c)(1), and shall not be less than 2.83 kg/m² (58 lbs/100 sq.ft.).



TYPICAL URBAN ENTRANCE



SECTION A-A & C-C



SECTION B-B & B'-B'

SPECIAL NOTES:

- ① 100 (4) is the normal dimension. If specified in the plans, the following shall be used for improved entrance match-up: Minimum - 65 (2 1/2) Maximum - 125 (5)

QUANTITY URBAN ENTRANCE
 Section B'-B' to B-B= (0.09 cu. yd./ft.),
 Section C-C to B'-B' + B-B to A-A= (0.64 cu. yd.)

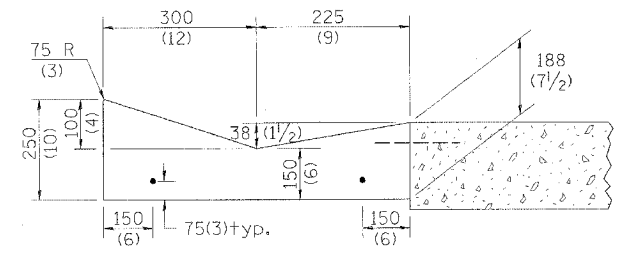
REVISIONS	
NAME	DATE

ILLINOIS DEPARTMENT OF TRANSPORTATION
MOFFITT STREET IMPROVEMENTS
DETAIL - TYPE B GUTTER (MODIFIED)
SHEET 1 OF 2

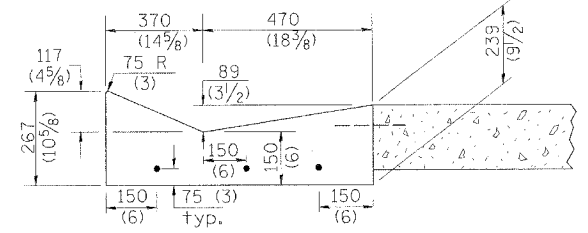
DATE 12/05/06
 DRAWN BY DLC
 CHECKED BY REW

89370

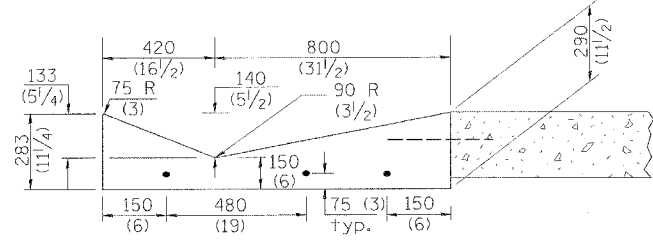
F.A.U. RTE.	SECTION	COUNTY	TOTAL SHEETS	SHEET NO.
6579 D5-00035-00-RP		PEORIA	31	21
STA.	TO STA.			
FED. ROAD DIST. NO. 4	ILLINOIS FED. AID PROJECT			



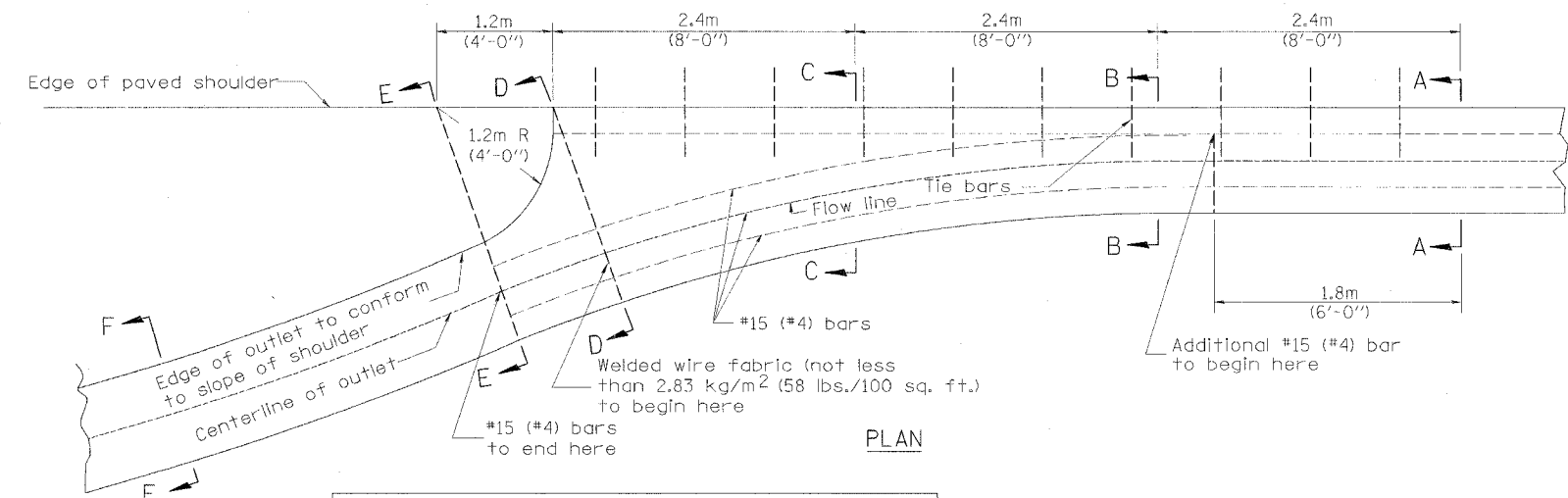
SECTION A-A



SECTION B-B



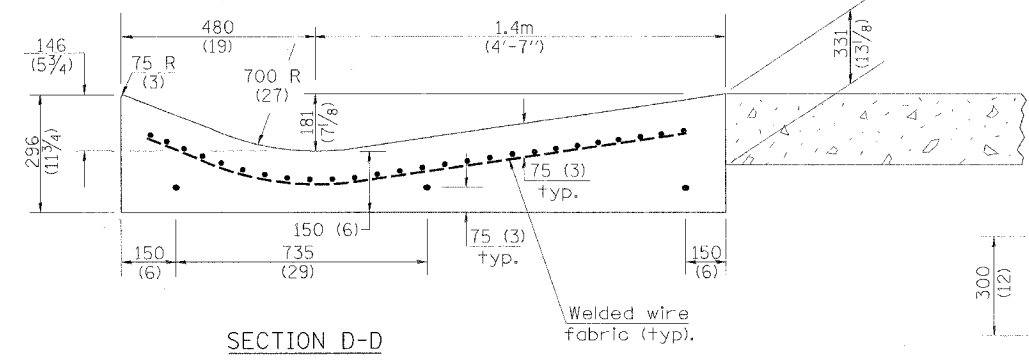
SECTION C-C



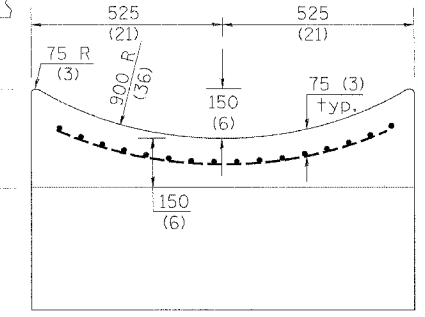
PLAN

QUANTITY
 Section A-A to E-E= (2.81 cu. yd.) concrete.
 Section F-F= (0.09 cu. yd./ft.) concrete.

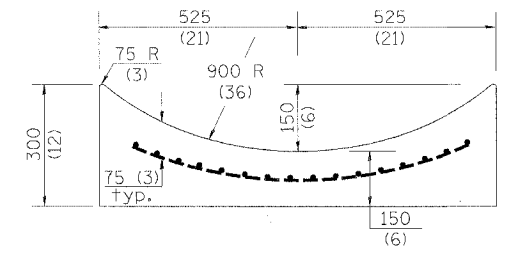
If the average grade of pavement for the distance from section A-A to section D-D exceeds 2%, this distance shall be increased 1.8m (6 ft.) for each 1% increase in grade. A quantity adjustment is required.



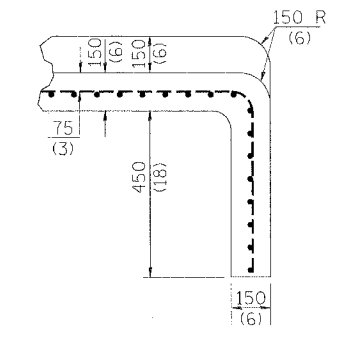
SECTION D-D



SECTION E-E

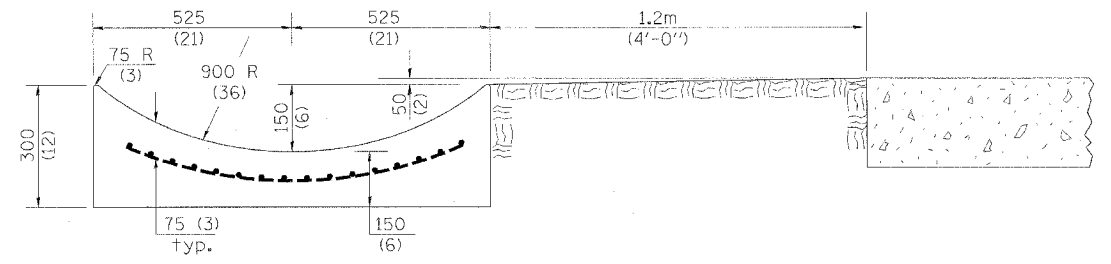


SECTION F-F



SECTIONS AT END OF OUTLET (CURTAIN WALL)

QUANTITY
 Curtain Wall
 (0.1 cu. yd.) concrete.



OUTLET

All dimensions are in millimeters (inches) unless otherwise noted.

REVISIONS	
NAME	DATE

ILLINOIS DEPARTMENT OF TRANSPORTATION
MOFFITT STREET IMPROVEMENTS
DETAIL - TYPE B GUTTER (MODIFIED)
SHEET 2 OF 2

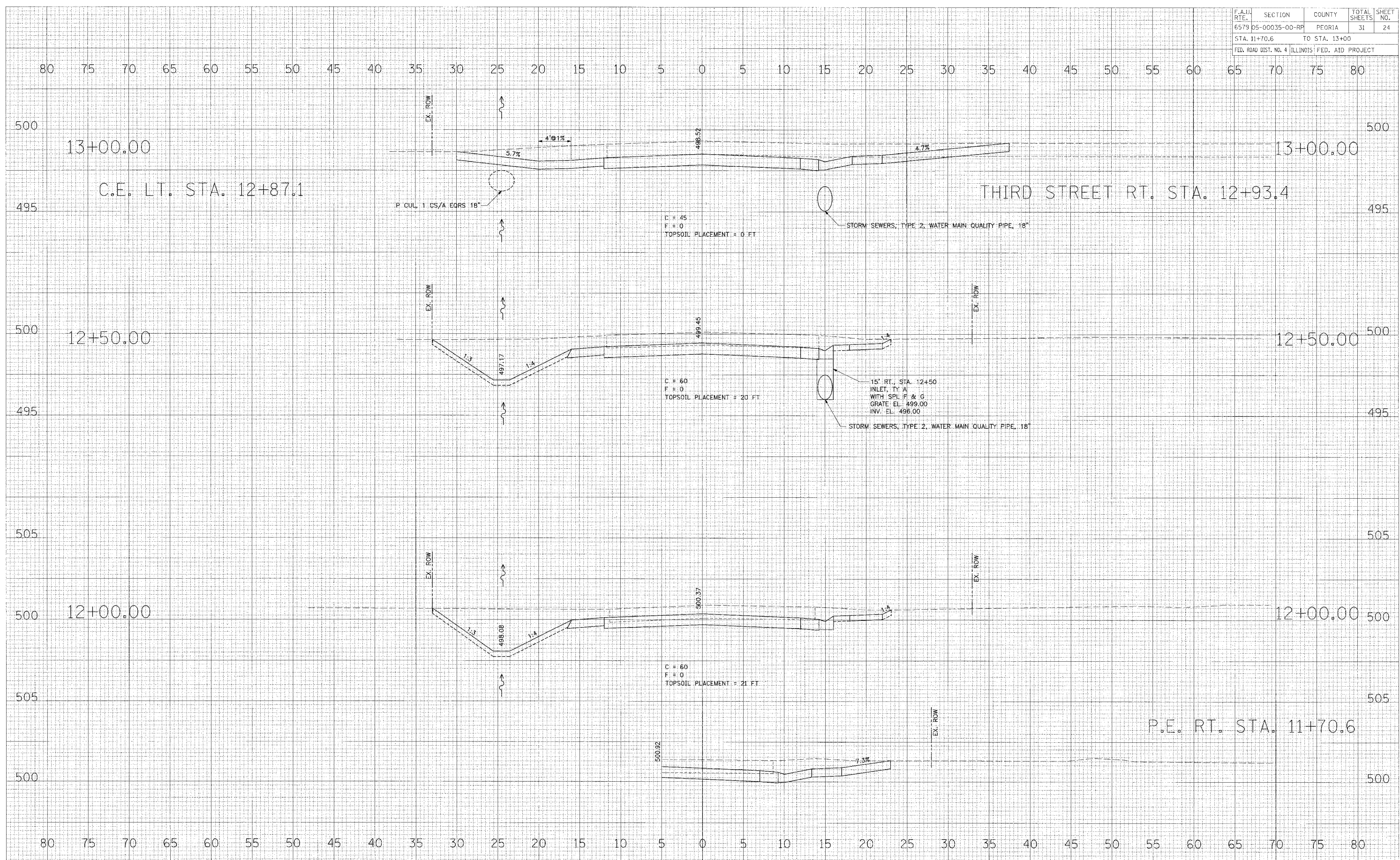
DATE 12/05/06
 DRAWN BY DLC
 CHECKED BY REW

D:\TYPE B GUTTER.DWG 12/05/2006 11:41:33 AM

F.A.U. RTE.	SECTION	COUNTY	TOTAL SHEETS	SHEET NO.
6579	05-00035-00-RP	PEORIA	31	24
STA. 11+70.6		TO STA. 13+00		
FED. ROAD DIST. NO. 4 ILLINOIS FED. AID PROJECT				

DATE	
BY	
REVISIONS	
NO.	
DATE	
BY	
REVISIONS	
NO.	
DATE	
BY	
REVISIONS	
NO.	

DATE	
BY	
REVISIONS	
NO.	
DATE	
BY	
REVISIONS	
NO.	
DATE	
BY	
REVISIONS	
NO.	

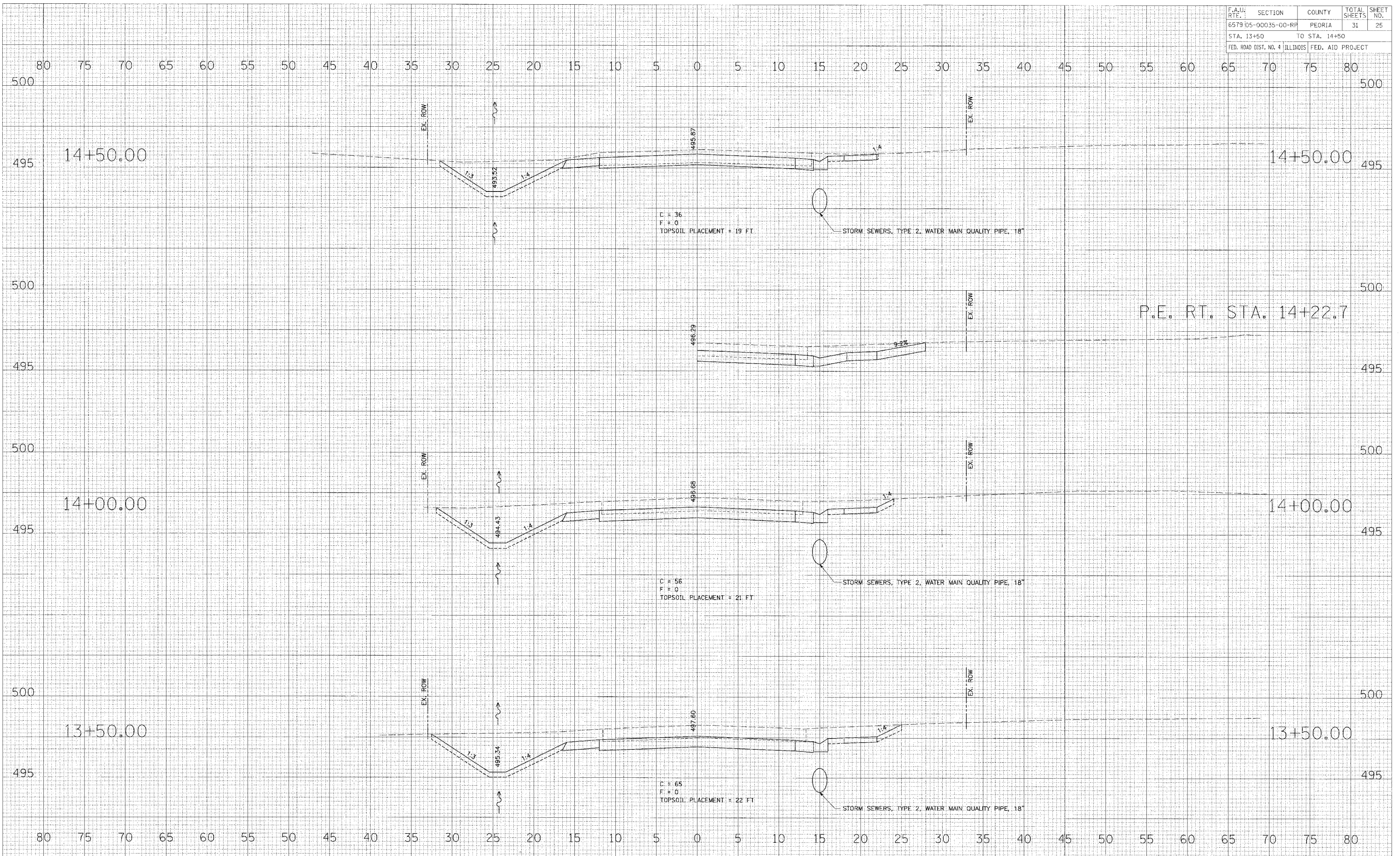


7/5/11 11:24:24 AM

F.A.U. RTE.	SECTION	COUNTY	TOTAL SHEETS	SHEET NO.
6579 05-00035-00-RF		PEORIA	31	25
STA. 13+50		TO STA. 14+50		
FED. ROAD DIST. NO. 4 ILLINOIS		FED. AID PROJECT		

DATE	
BY	
APPROVED	
DATE	
NO.	

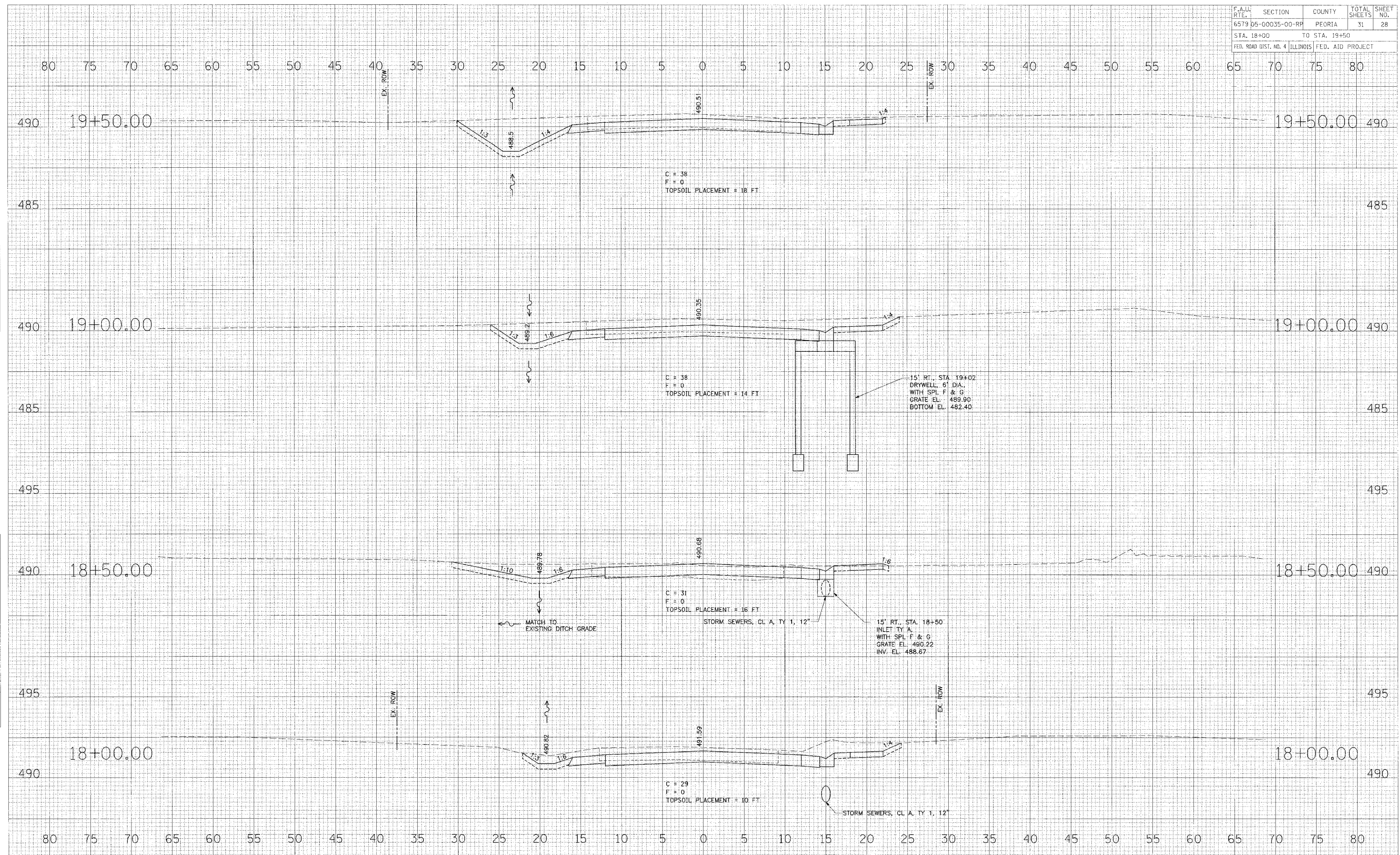
DATE	
BY	
APPROVED	
DATE	
NO.	



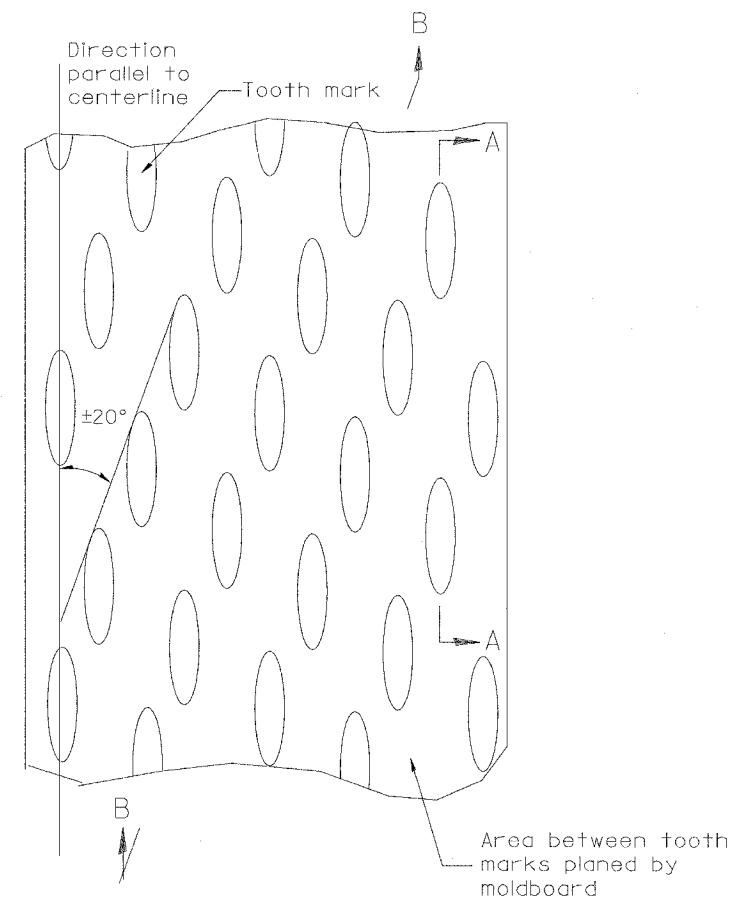
F.A.U. RTE.	SECTION	COUNTY	TOTAL SHEETS	SHEET NO.
6579 05-00035-00-PP	PEORIA	ILLINOIS	31	28
STA. 18+00 TO STA. 19+50		FED. AID PROJECT		

DATE	BY
DATE	BY
DATE	BY

DATE	BY
DATE	BY
DATE	BY



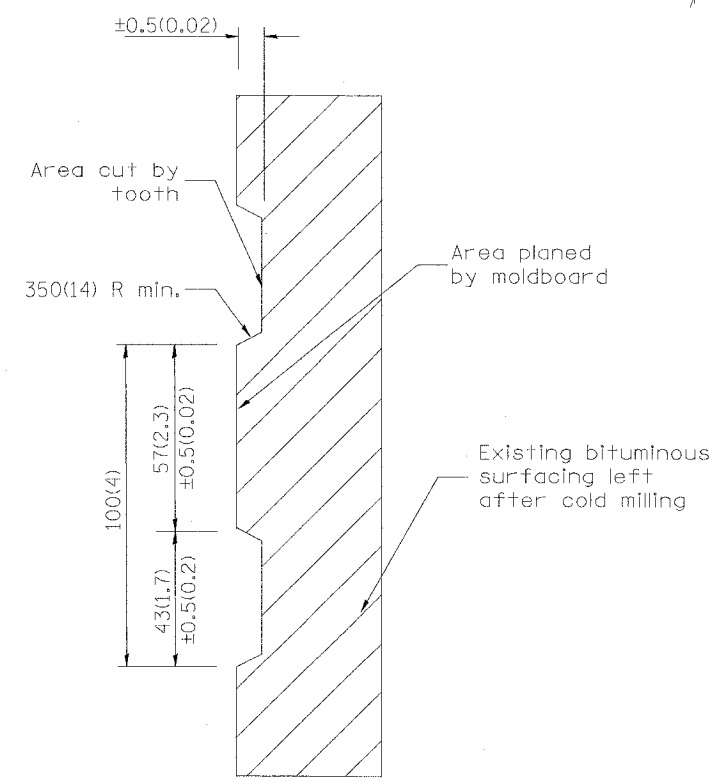
F.A.I.L. RTE.	SECTION	COUNTY	TOTAL SHEETS	SHEET NO.
6579	05-00035-00-RP	PEORIA	31	31
STA.		TO STA.		
FED. ROAD DIST. NO. 4		ILLINOIS FED. AID PROJECT		



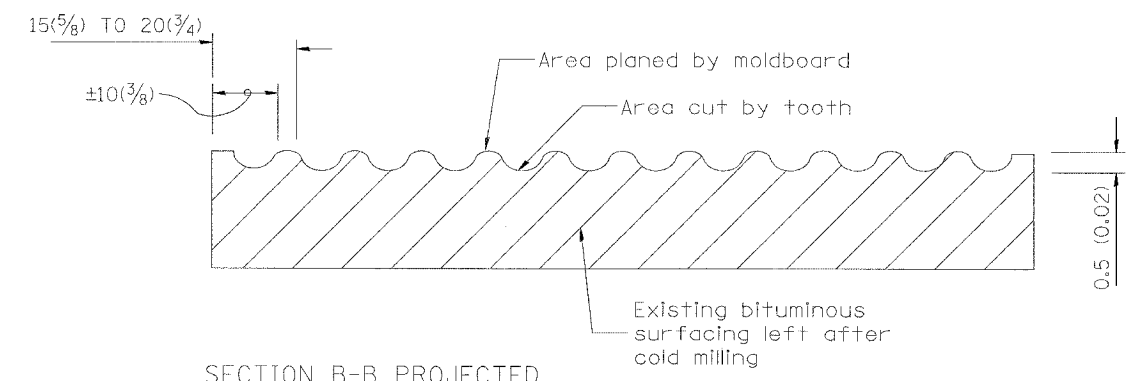
PLAN

General notes:

1. Coldmilling shall consist of two processes: Cutting with carbide teeth mounted on a rotating drum, and planing with a moldboard mounted immediately behind the cutting drum.
2. Other similar patterns will be acceptable if they consist of a smooth, flat, planed surface interspersed with a pattern of discontinuous longitudinal striations.



SECTION A-A



SECTION B-B PROJECTED PERPENDICULAR TO CENTERLINE

DESIGNER NOTE
1. INCLUDE DISTRICT SPECIAL PROVISION, IF APPLICABLE.

\$\$\$DATE\$\$\$

All dimensions are in millimeters (inches) unless otherwise noted.

ILLINOIS DEPARTMENT OF TRANSPORTATION	
DISTRICT CADD STANDARD	
BITUMINOUS SURFACE REMOVAL (COLD MILLING)	
CADD STD NO. 440001-D4	
SCALE: NOT DRAWN TO SCALE	DRAWN BY CADD
DATE 12/01/06	CHECKED BY

DATE	REVISIONS	BY
1-1-97	RENUM. C-104.01. NEW REVISION BOX	T. P.
4-20-98	REMOVED MILLING DETAIL FROM STD.	J. A.
9-08-98	CORRECT NOTE LEADER PLACEMENT	R. W.

•DSN-ONLY•