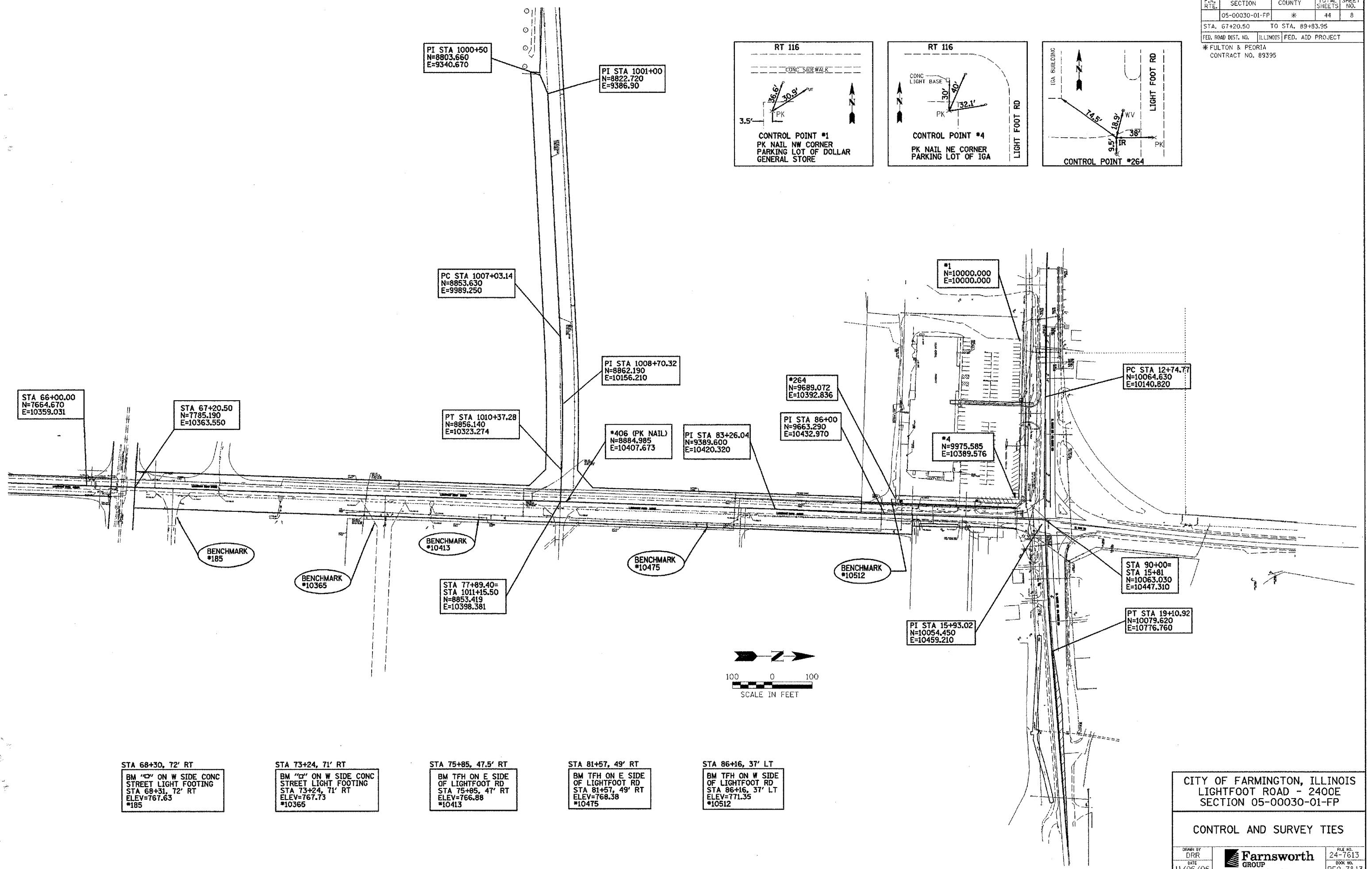
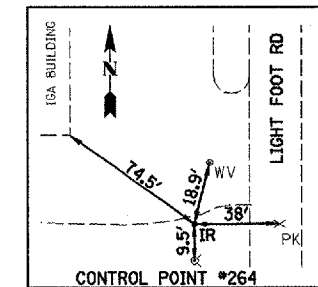
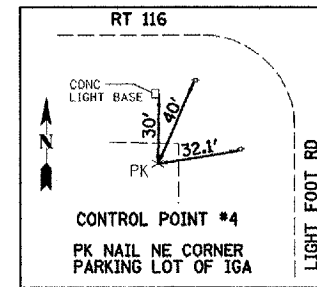
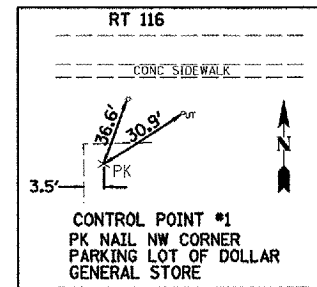


F.A. RTE.	SECTION	COUNTY	TOTAL SHEETS	SHEET NO.
	05-00030-01-FP	*	44	8
STA. 67+20.50		TO STA. 89+83.95		
FED. ROAD DIST. NO.		ILLINOIS FED. AID PROJECT		
* FULTON & PEORIA CONTRACT NO. 89395				



PI STA 1000+50
N=8803.660
E=9340.670

PI STA 1001+00
N=8822.720
E=9386.90

PC STA 1007+03.14
N=8853.630
E=9989.250

PI STA 1008+70.32
N=8862.190
E=10156.210

STA 66+00.00
N=7664.670
E=10359.031

STA 67+20.50
N=7785.190
E=10363.550

PT STA 1010+37.28
N=8856.140
E=10323.274

*406 (PK NAIL)
N=8884.985
E=10407.673

PI STA 83+26.04
N=9389.600
E=10420.320

PI STA 86+00
N=9663.290
E=10432.970

*1
N=10000.000
E=10000.000

*264
N=9689.072
E=10392.836

PC STA 12+74.77
N=10064.630
E=10140.820

*4
N=9975.585
E=10389.576

BENCHMARK
*185

BENCHMARK
*10365

BENCHMARK
*10413

BENCHMARK
*10475

BENCHMARK
*10512

STA 77+89.40=
STA 1011+15.50
N=8853.419
E=10398.381

PI STA 15+93.02
N=10054.450
E=10459.210

STA 90+00=
STA 15+81
N=10063.030
E=10447.310

PT STA 19+10.92
N=10079.620
E=10776.760



STA 68+30, 72' RT
BM "C" ON W SIDE CONC
STREET LIGHT FOOTING
STA 68+31, 72' RT
ELEV=767.63
*185

STA 73+24, 71' RT
BM "C" ON W SIDE CONC
STREET LIGHT FOOTING
STA 73+24, 71' RT
ELEV=767.73
*10365

STA 75+85, 47.5' RT
BM TFH ON E SIDE
OF LIGHTFOOT RD
STA 75+85, 47' RT
ELEV=766.88
*10413

STA 81+57, 49' RT
BM TFH ON E SIDE
OF LIGHTFOOT RD
STA 81+57, 49' RT
ELEV=768.38
*10475

STA 86+16, 37' LT
BM TFH ON W SIDE
OF LIGHTFOOT RD
STA 86+16, 37' LT
ELEV=771.35
*10512

CITY OF FARMINGTON, ILLINOIS
LIGHTFOOT ROAD - 2400E
SECTION 05-00030-01-FP

CONTROL AND SURVEY TIES

DESIGNED BY DRR	<p>Farnsworth GROUP 2109 WestGrove Drive Bloomington, Illinois 61704 309/882-8436 309/882-8674 fax</p>	FILE NO. 24-7613
CHECKED BY RCD		BOOK NO. PE0-7&13
DATE 11/06/06		SHEET NO. 8 of 44