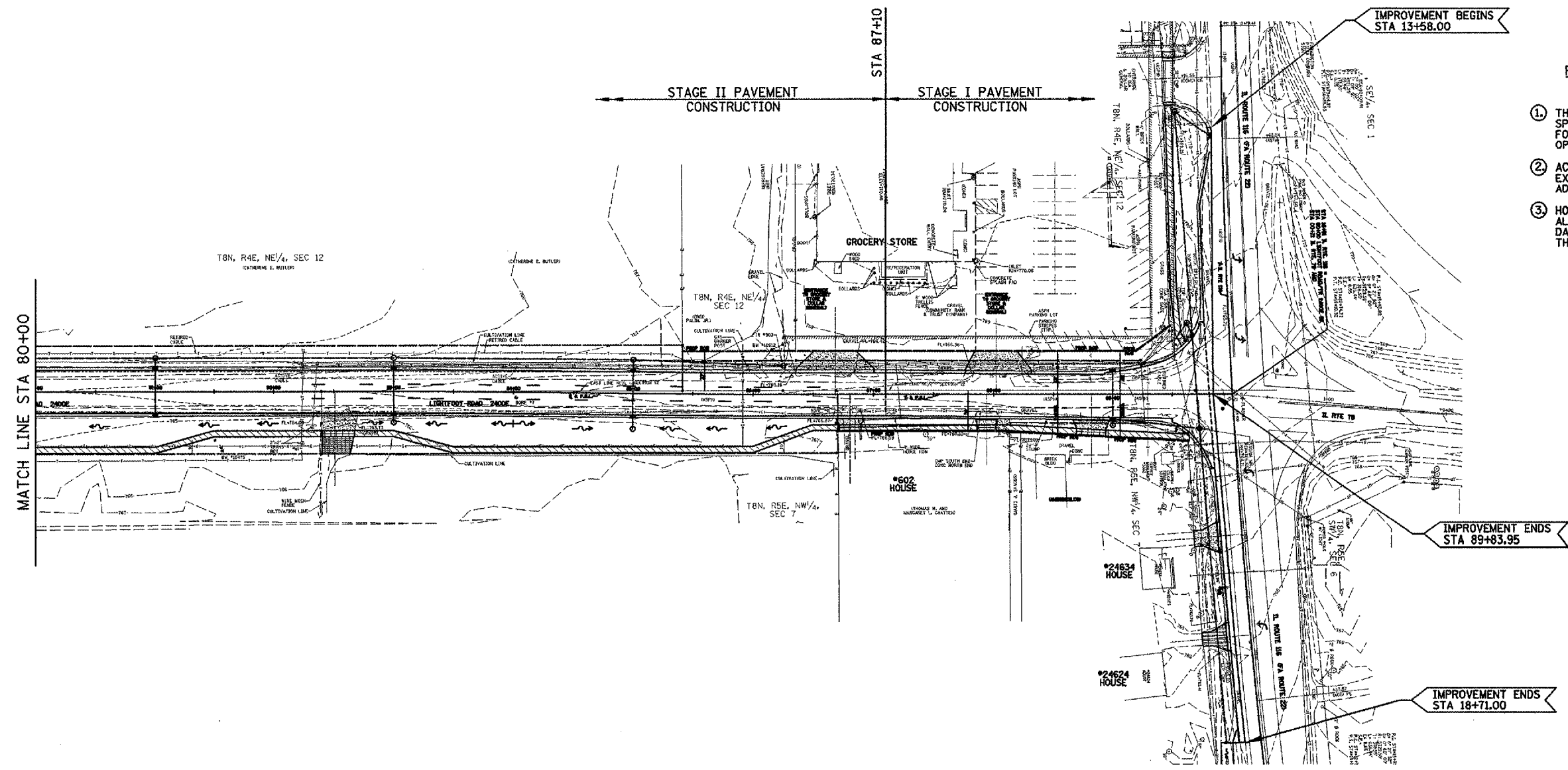
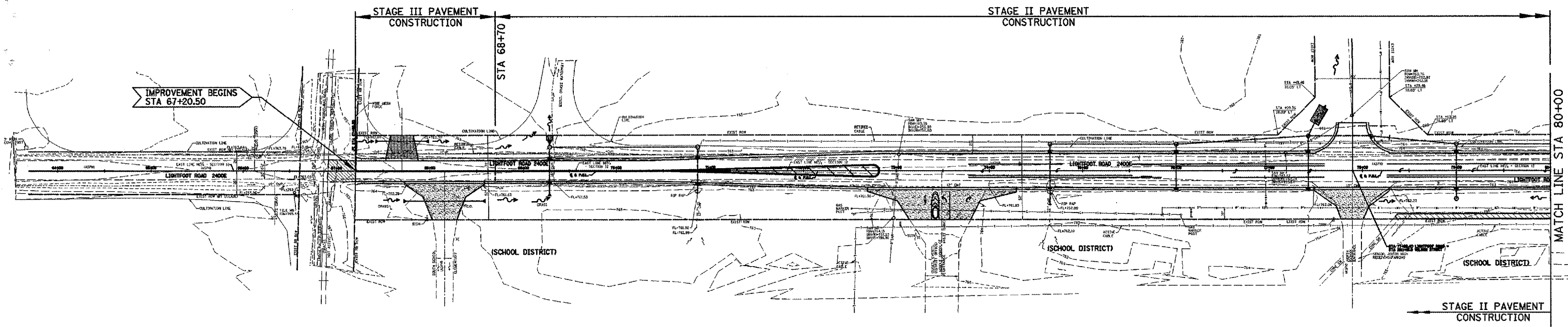
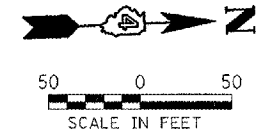


F.A. RTE.	SECTION	COUNTY	TOTAL SHEETS	SHEET NO.
05-00030-01-FP	*		44	9
STA. 67+20.50		TO STA. 89+83.95		
FED. ROAD DIST. NO.		ILLINOIS	FED. AID PROJECT	
* FULTON & PEORIA				
CONTRACT NO. 89395				



- ROADWAY PAVEMENT AND CURB & GUTTER CONSTRUCTION STAGING REQUIREMENTS**
- THIS SHEET SHALL BE REFERENCED WITH THE APPLICABLE SPECIAL PROVISIONS FOR COMPLETION DATE, AGGREGATE FOR TEMPORARY ACCESS, TRAFFIC CONTROL AND SEQUENCE OF OPERATIONS.
 - ACCESS FOR GROCERY STORE BUSINESS IS ALSO AVAILABLE VIA EXISTING ALLEYS LOCATED BEHIND THE BUSINESS AND ON ADJACENT IL RTE 116.
 - HOMEOWNERS AT 602 LIGHTFOOT ROAD AS WELL AS RESIDENTS ALONG IL RTE 116 SHALL HAVE ACCESS AT THE END OF EACH DAY, UTILIZING AGGREGATE FOR TEMPORARY ACCESS UNTIL THE PERMANENT DRIVES CAN BE CONSTRUCTED.



CITY OF FARMINGTON, ILLINOIS
 LIGHTFOOT ROAD - 2400E
 SECTION 05-00030-01-FP

STAGE CONSTRUCTION PLAN

DESIGNED BY DRR	 2700 So. Green Drive Bloomington, Illinois 61704 309/898-8436, 309/898-0670 fax	FILE NO. 24-7613
CHECKED BY RCD		BOOK NO. PEO-7&13
DATE 11/06/06		SHEET NO. 9 of 44