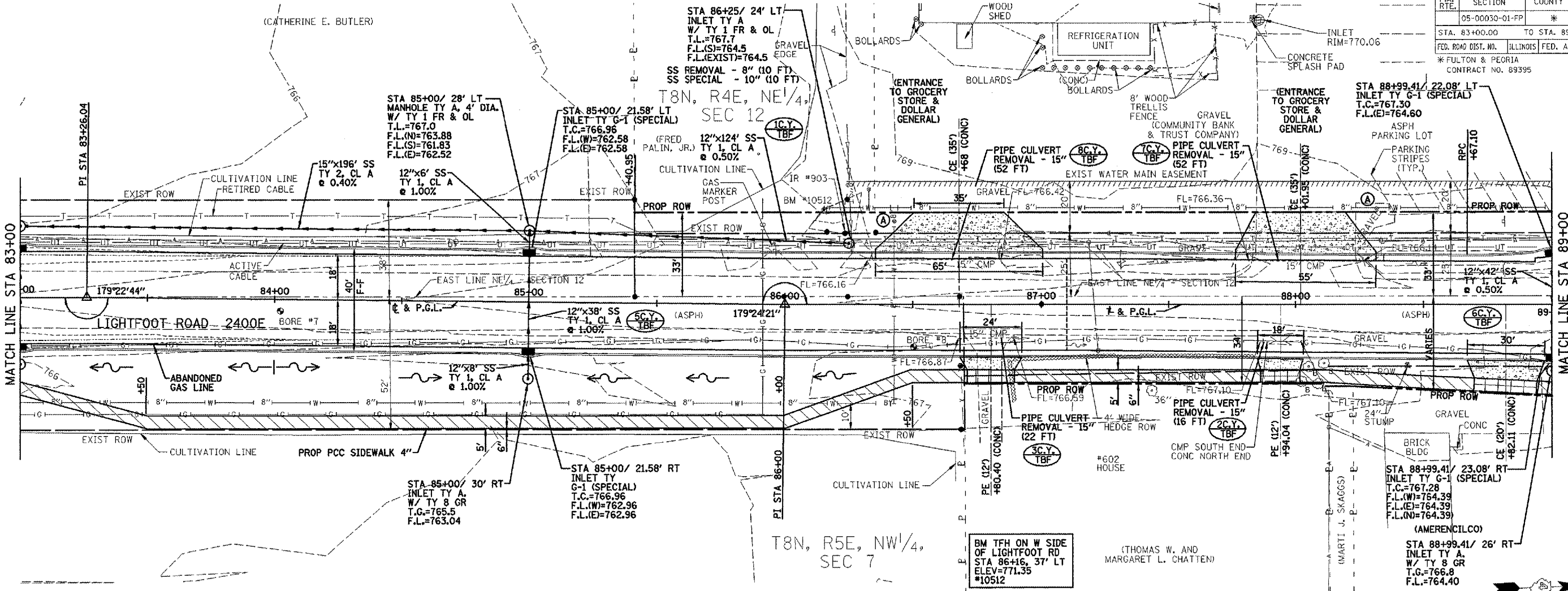


F.A. RTE.	SECTION	COUNTY	TOTAL SHEETS	SHEET NO.
05-00030-01-FP	*	*	44	13
STA. 83+00.00 TO STA. 89+00.00		ILLINOIS FED. AID PROJECT		
FED. ROAD DIST. NO.		* FULTON & PEORIA CONTRACT NO. 89395		



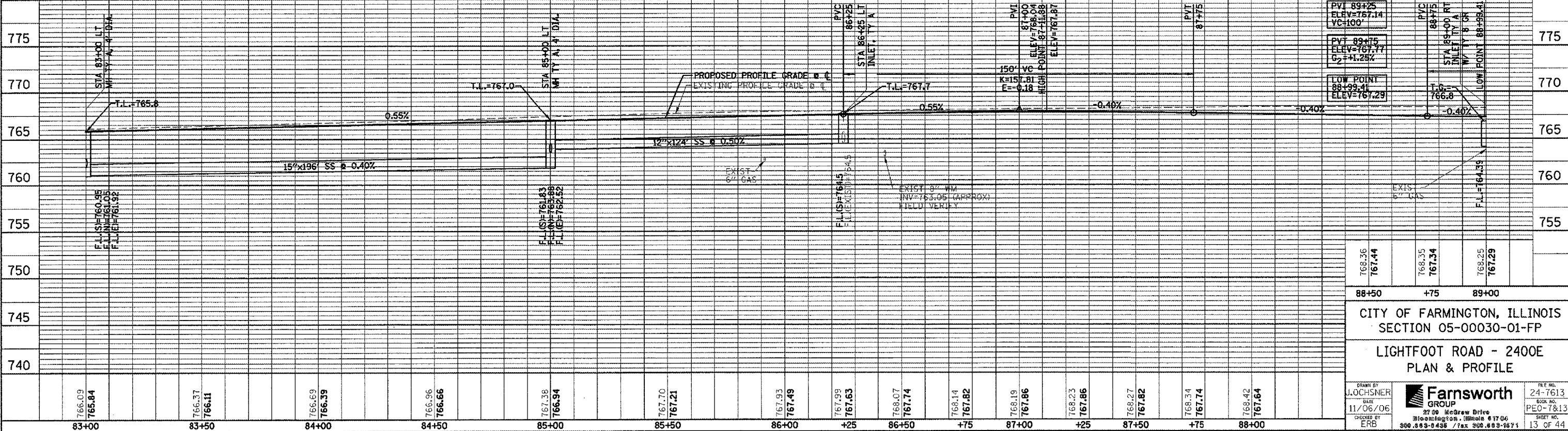
T8N, R5E, NW1/4, SEC 7

BM TFH ON W SIDE OF LIGHTFOOT RD STA 86+16.37' LT ELEV=771.35 #10512

(THOMAS W. AND MARGARET L. CHATTEN)

(AMERENCILCO)

- NOTES:
 1) ALL RADII AND CURB INLET OFFSET DIMENSIONS ARE TO BACK OF CURB
 2) SEE DETAIL SHEET FOR INLET, FRAME AND GRATE DETAILS



88+50 +75 89+00
 CITY OF FARMINGTON, ILLINOIS
 SECTION 05-00030-01-FP
 LIGHTFOOT ROAD - 2400E
 PLAN & PROFILE

DRAWN BY J. OCHSNER	DATE 11/06/06		FILE NO. 24-7613
CREATED BY ERB	BOOK NO. PE0-7813		SHEET NO. 13 OF 44

FILE:
DATE: