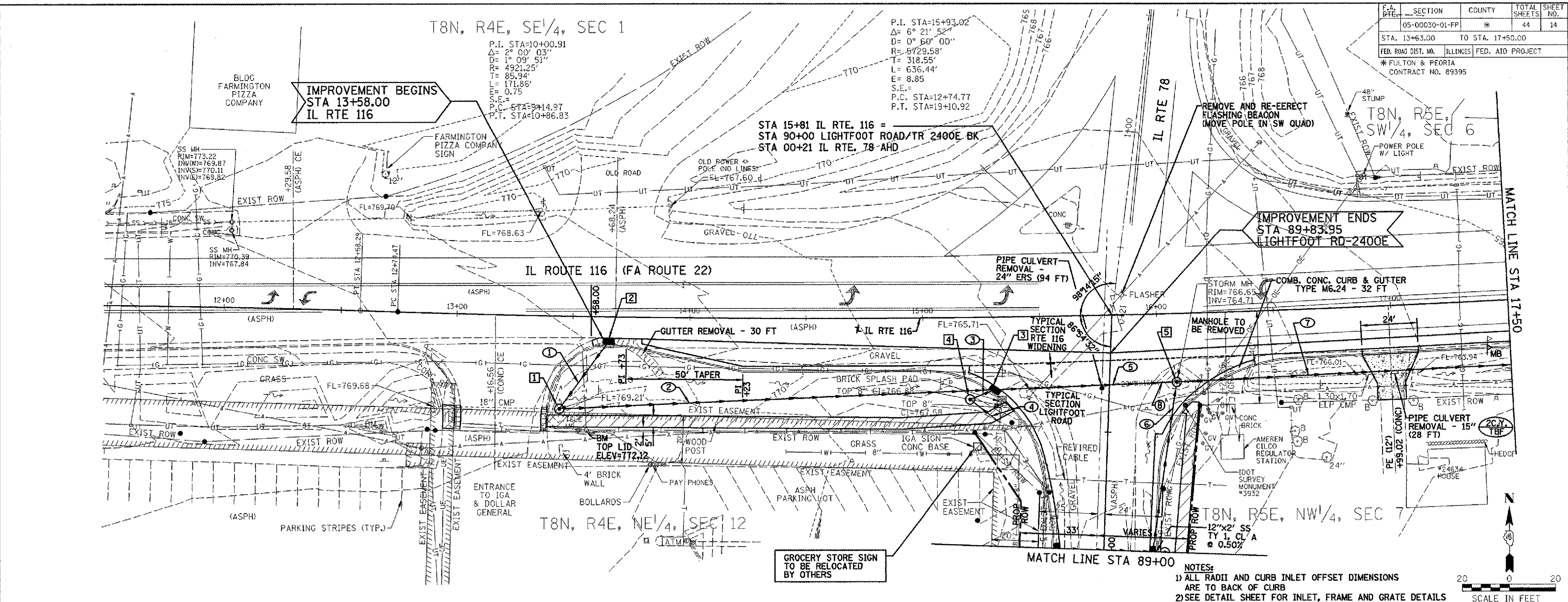
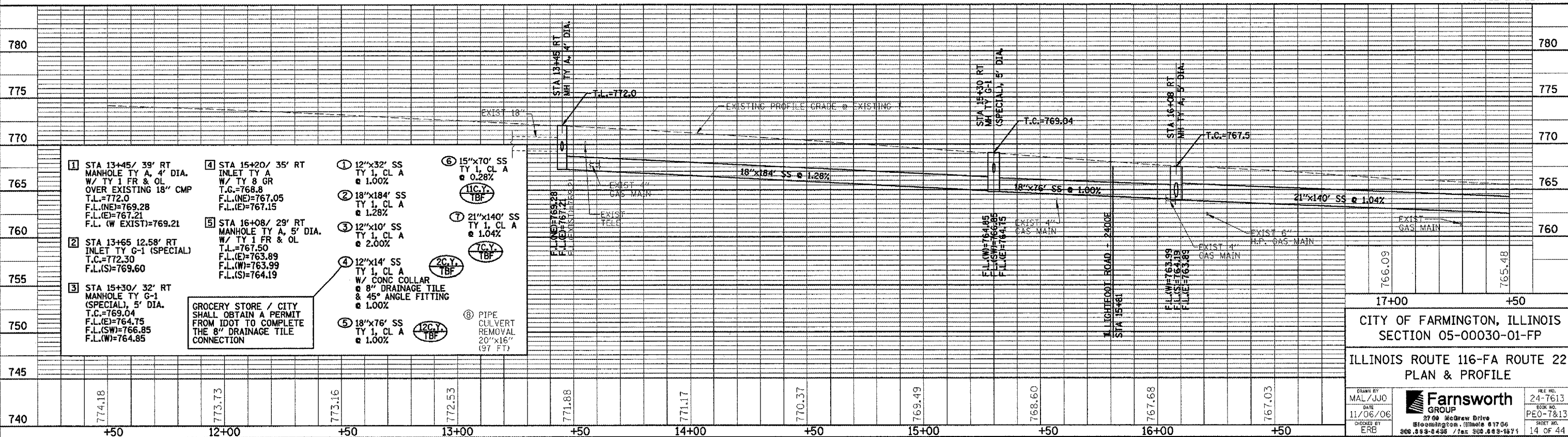


F.A. SECTION	COUNTY	TOTAL SHEETS	SHEET NO.
05-00030-01-FP	*	44	14
STA. 13+63.00 TO STA. 17+50.00			
FED. ROAD DIST. NO. ILLINOIS FED. AID PROJECT			
* FULTON & PEORIA CONTRACT NO. 89395			



NOTES:
 1) ALL RADII AND CURB INLET OFFSET DIMENSIONS ARE TO BACK OF CURB
 2) SEE DETAIL SHEET FOR INLET, FRAME AND GRATE DETAILS

SCALE IN FEET



- 1) STA 13+45/ 39' RT MANHOLE TY A, 4' DIA. W/ TY 1 FR & OL OVER EXISTING 18" CMP T.L.=772.0 F.L.(NE)=769.28 F.L.(E)=767.21 F.L. (W EXIST)=769.21
- 2) STA 13+65 12.58' RT INLET TY G-1 (SPECIAL) T.C.=772.30 F.L.(S)=769.60
- 3) STA 15+30/ 32' RT MANHOLE TY G-1 (SPECIAL), 5' DIA. T.C.=769.04 F.L.(E)=764.75 F.L.(SW)=766.85 F.L.(W)=764.85
- 4) STA 15+20/ 35' RT INLET TY A W/ TY 8 GR T.C.=768.8 F.L.(NE)=767.05 F.L.(E)=767.15
- 5) STA 16+08/ 29' RT MANHOLE TY A, 5' DIA. W/ TY 1 FR & OL T.L.=767.50 F.L.(E)=763.89 F.L.(W)=763.99 F.L.(S)=764.19
- 6) 12"x32" SS TY 1, CL A @ 1.00%
- 7) 18"x184" SS TY 1, CL A @ 1.28%
- 8) 21"x140" SS TY 1, CL A @ 1.04%
- 9) 12"x14" SS TY 1, CL A W/ CONC COLLAR @ 8" DRAINAGE TILE & 45° ANGLE FITTING @ 1.00%
- 10) 18"x76" SS TY 1, CL A @ 1.00%
- 11) 15"x70" SS TY 1, CL A @ 0.28%
- 12) 21"x140" SS TY 1, CL A @ 1.04%
- 13) PIPE CULVERT REMOVAL 20"x16" (97 FT)

GROCERY STORE / CITY SHALL OBTAIN A PERMIT FROM IDOT TO COMPLETE THE 8" DRAINAGE TILE CONNECTION