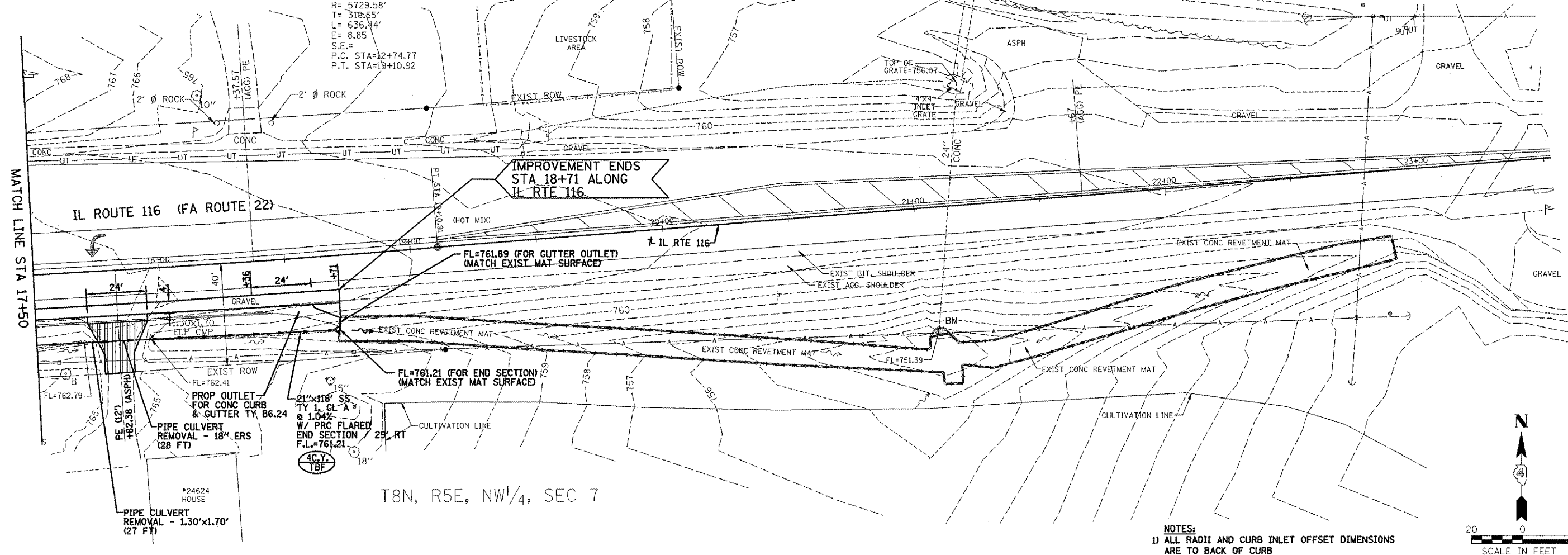


F.A. RTE.	SECTION	COUNTY	TOTAL SHEETS	SHEET NO.
05-00030-01-FP	*	*	44	15
STA. 17+50.00		TO STA. 18+71.00		
FED. ROAD DIST. NO.		ILLINOIS FED. AID PROJECT		
* FULTON & PEORIA CONTRACT NO. B9395				

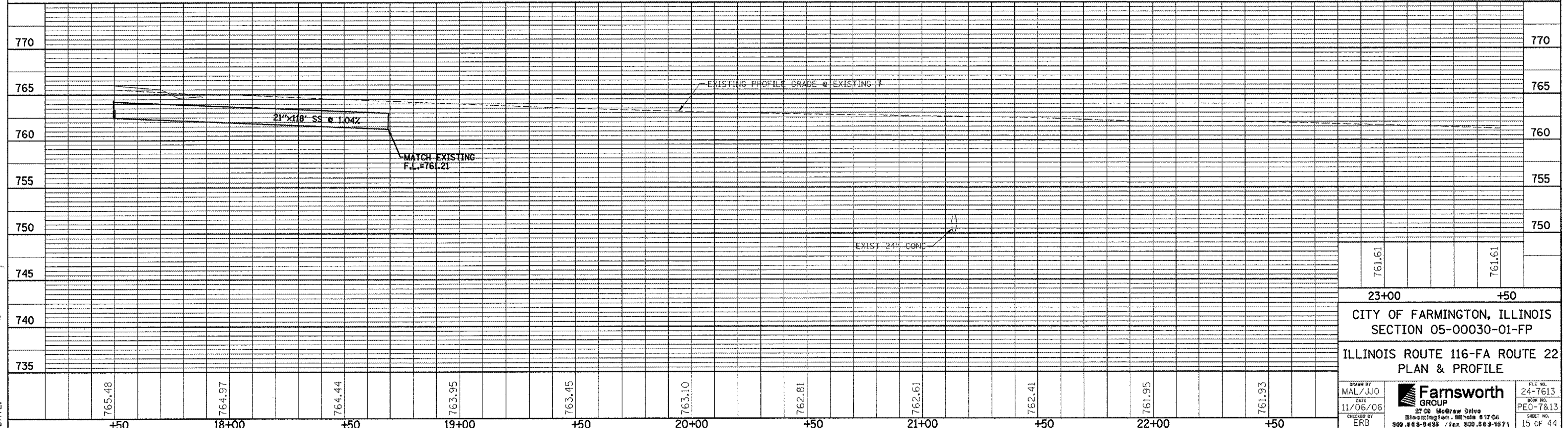
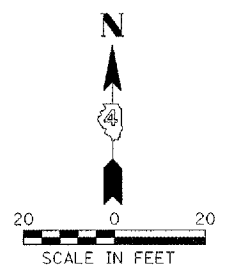
T8N, R5E, SW 1/4, SEC 6

P.I. STA=15+93.02  
 $\Delta = 6^\circ 21' 52''$   
 $D = 0^\circ 60' 00''$   
 $R = 5729.58'$   
 $T = 318.65'$   
 $L = 636.44'$   
 $E = 8.85'$   
 $S.E. =$   
 P.C. STA=12+74.77  
 P.T. STA=19+10.92



T8N, R5E, NW 1/4, SEC 7

NOTES:  
 1) ALL RADII AND CURB INLET OFFSET DIMENSIONS ARE TO BACK OF CURB  
 2) SEE DETAIL SHEET FOR INLET, FRAME AND GRATE DETAILS



761.61	761.61
23+00	+50
CITY OF FARMINGTON, ILLINOIS SECTION 05-00030-01-FP	
ILLINOIS ROUTE 116-FA ROUTE 22 PLAN & PROFILE	
DRAWN BY MAL/JJO	FILE NO. 24-7613
DATE 11/06/06	BOOK NO. PEO-7&13
CHECKED BY ERB	SHEET NO. 15 OF 44
<b>Farnsworth GROUP</b> 2706 McGraw Drive Bloomington, Illinois 61704 309.663-6438 / fax 309.663-1871	

FILE:  
DATE: