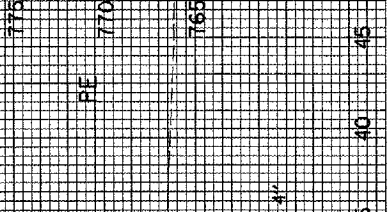
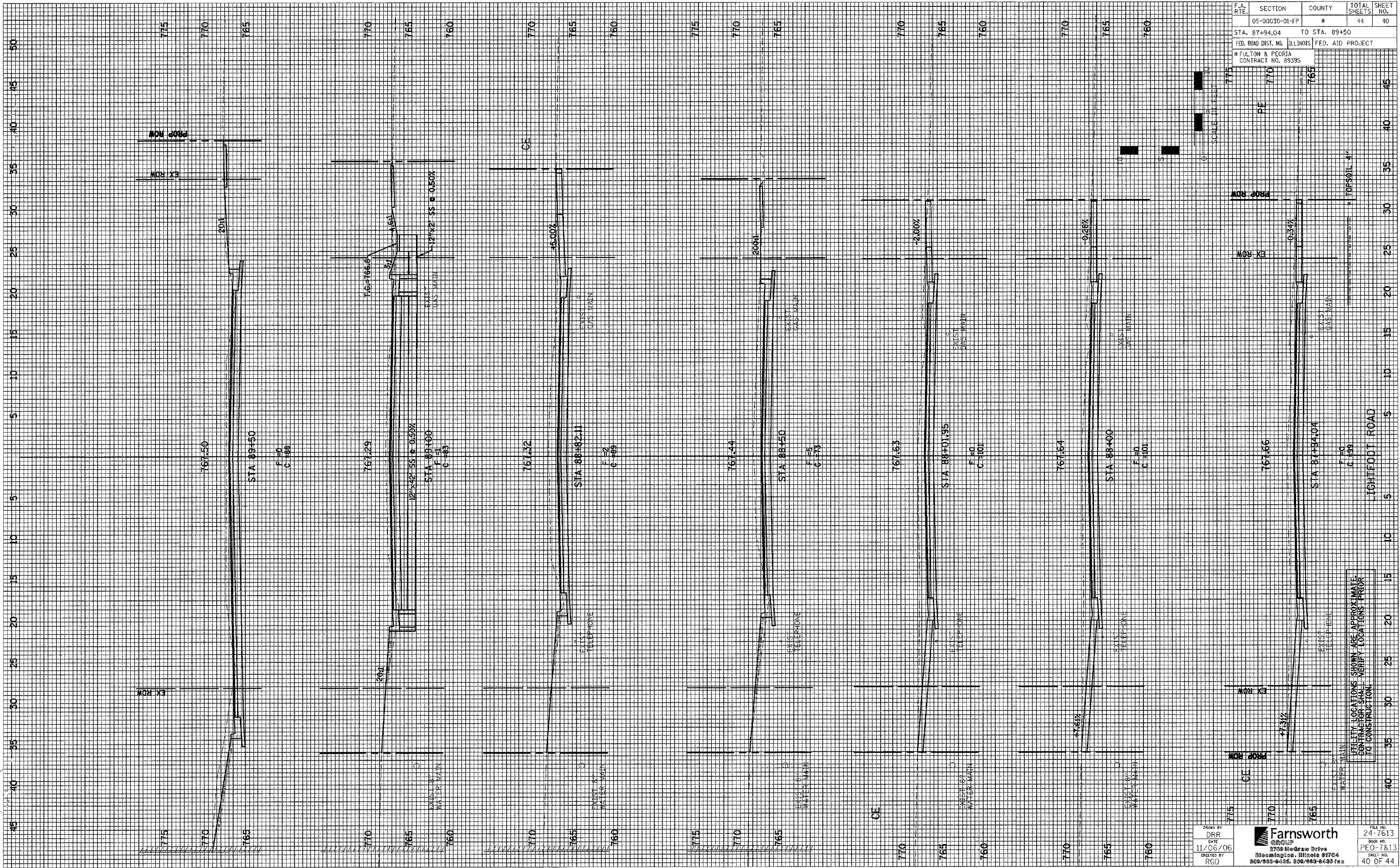


F.A. RTE.	SECTION	COUNTY	TOTAL SHEETS	SHEET NO.
	05-00030-01-FP	*	44	40
STA. 87+94.04		TO STA. 89+50		
FED. ROAD DIST. NO.		ILLINOIS FED. AID PROJECT		
* FULTON & PEORIA		CONTRACT NO. 89395		



UTILITY LOCATIONS SHOWN ARE APPROXIMATE
CONTRACTOR SHALL VERIFY LOCATIONS PRIOR
TO CONSTRUCTION

Drawn by
D.R.R.
DATE
11/06/06
CHECKED BY
R.G.D.

Farnsworth
2700 RedGraw Drive
Bloomington, Illinois 61704
309/888-0025, 309/888-6433 fax

FILE NO.
24-7613
BOOK NO.
PEO-7&13
SHEET NO.
40 OF 44