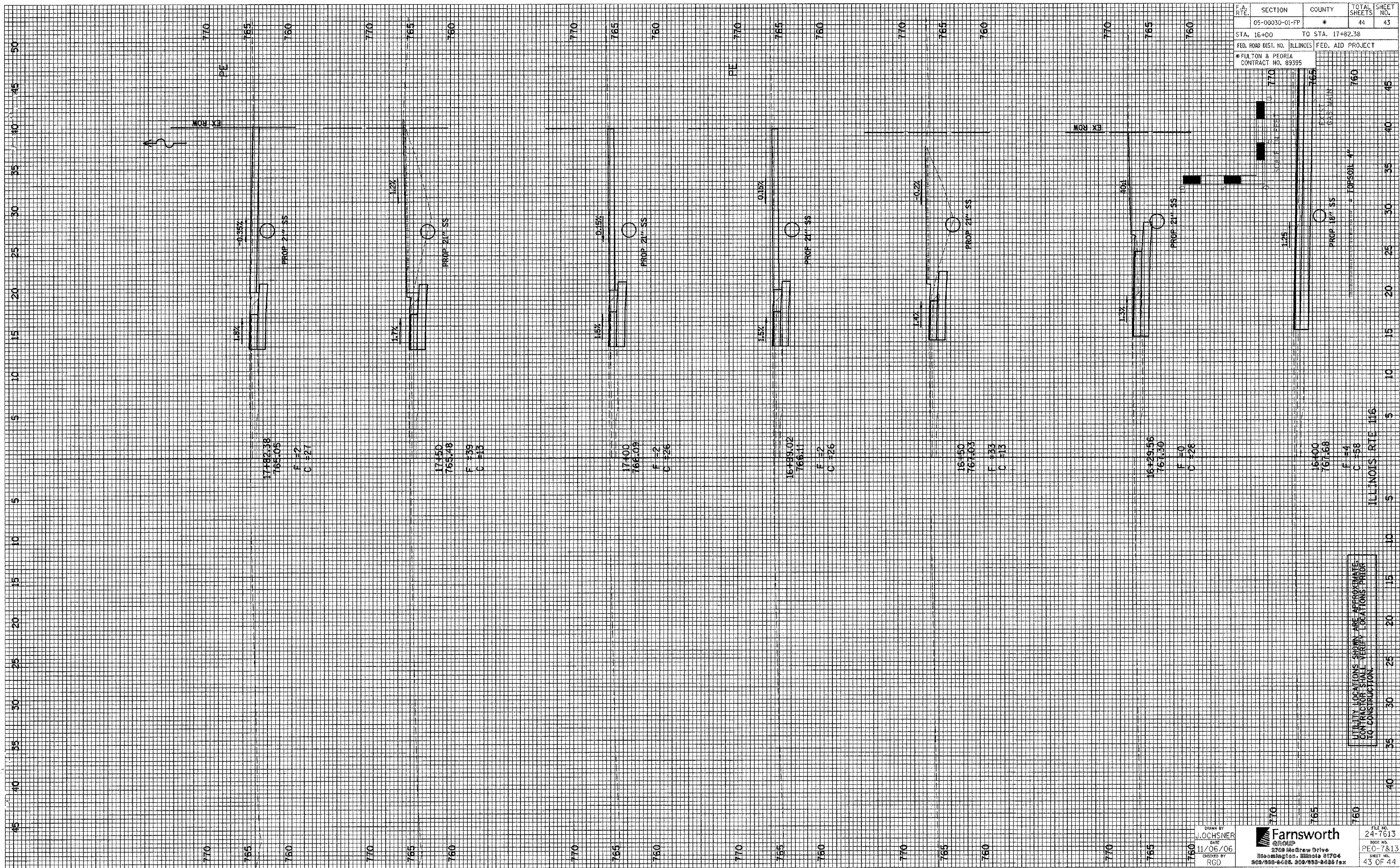


F.A. RTE.	SECTION	COUNTY	TOTAL SHEETS	SHEET NO.
05-00030-01-FP	*	*	44	43
STA. 16+00		TO STA. 17+82.38		
FED. ROAD DIST. NO.		ILLINOIS	FED. AID PROJECT	
*FULTON & PEORIA		CONTRACT NO. 89395		



17+82.38
765.05
F #2
C #27

17+50
765.48
F #39
C #15

17+00
766.09
F #2
C #26

16+99.02
766.11
F #2
C #26

16+50
767.03
F #33
C #15

16+29.56
767.30
F #0
C #28

16+00
767.68
F #4
C #58

UTILITY LOCATIONS SHOWN ARE APPROXIMATE.
CONTRACTOR SHALL VERIFY LOCATIONS PRIOR
TO CONSTRUCTION.

DRAWN BY
L. OCHSNER
DATE
11/06/06
CHECKED BY
RGD

Farnsworth
3709 MacGregor Drive
Bloomington, Illinois 61704
302/939-6425, 302/933-6426 fax

FILE NO.
24-7613
BOOK NO.
PEO-7813
SHEET NO.
43 OF 44