

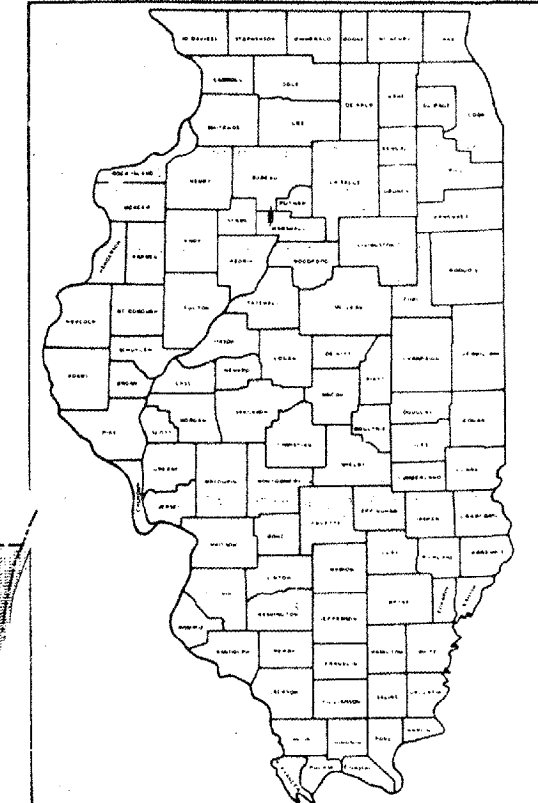
FAS ROUTE NO.	COUNTY	SECTION	CO. HWY. NO.	SHEET NO.	TOTAL SHEETS
249	MARSHALL	03-00083-00-RS	7	1	5

STATE OF ILLINOIS
DEPARTMENT OF TRANSPORTATION
DIVISION OF HIGHWAYS
PLANS FOR PROPOSED FEDERAL AID
SECONDARY
FEDERAL AID SECONDARY 249 (C. H. 7)
SECTION 03-00083-00-RS
PROJECT RS(249) 105
MARSHALL COUNTY
JOB NO. C-94-082-06
CONTRACT NO. 89400

INDEX OF SHEETS

SHEET NO. 1	COVER SHEET AND SUMMARY OF QUANTITIES
SHEET NO. 2	TABULATION OF QUANTITIES
SHEET NO. 3	TYPICAL CROSS SECTION, MAILBOX TURNOUT, ENTRANCE DETAILS, BUTT JOINT AND TAPER DETAILS
SHEET NO. 4	INTERSECTION DETAILS
SHEET NO. 5	INTERSECTION DETAIL, BARRICADE AND SIGN PLACEMENT MAP

STANDARDS: 701311-02 LANE CLOSURE TWO LANE, TWO WAY MOVING OPERATIONS - DAY ONLY FOR SPEEDS LESS THAN 45 MPH
702001-06 TRAFFIC CONTROL DEVICES
780001-01 TYPICAL PAVEMENT MARKINGS
BLR 22-4 TYPICAL APPLICATION OF TRAFFIC CONTROL DEVICES TWO LANE, TWO WAY, RURAL, OVER ONE DAY

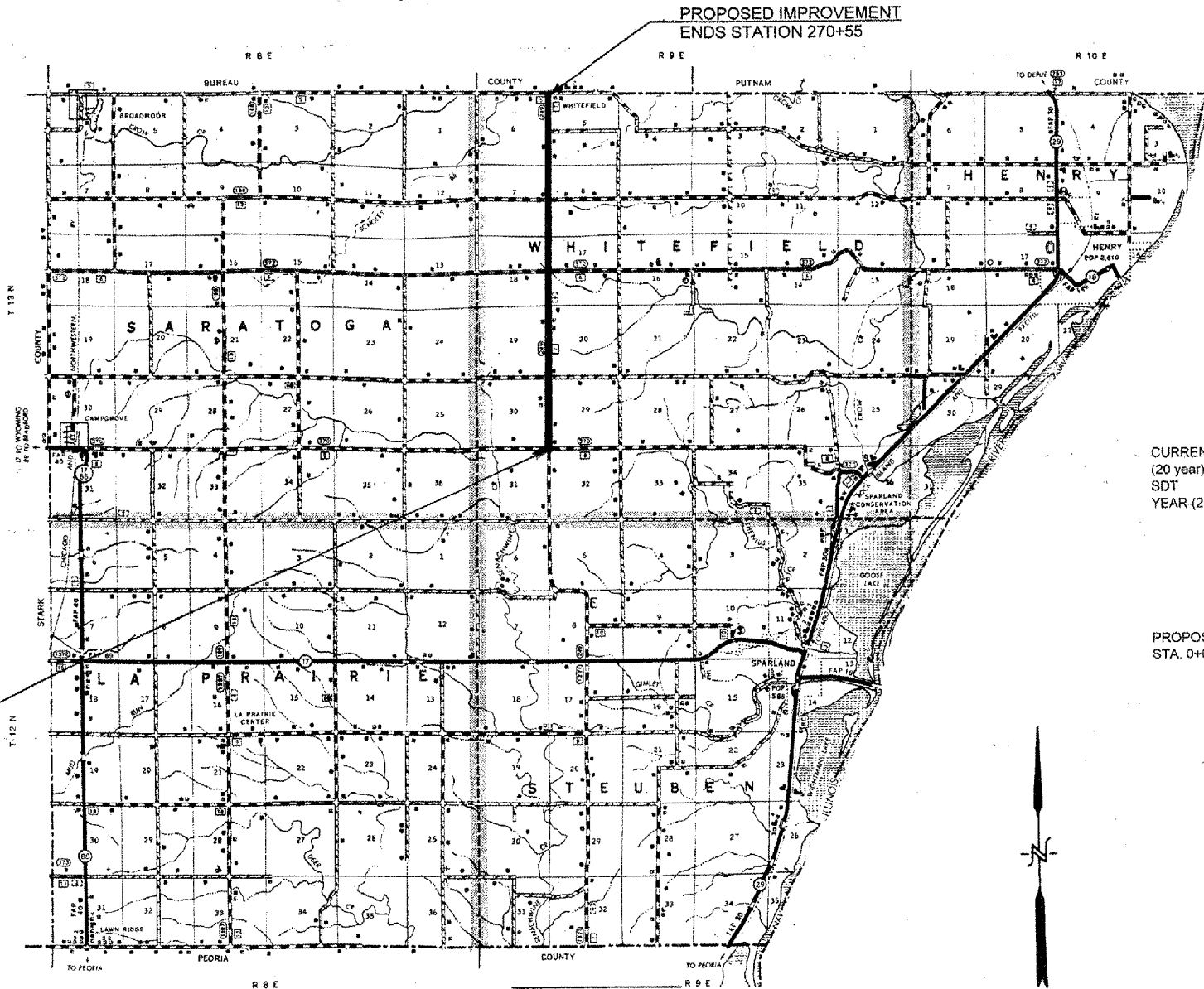


LOCATION OF SECTION INDICATED THUS: —

SUMMARY OF QUANTITIES
CONSTRUCTION CODE 1000

CODE NO.	UNIT	ITEM	QUANTITY
40600100	GALLON	BITUMINOUS MATERIALS (PRIME COAT)	6859.0
40600982	SQ YD	HOT-MIX ASPHALT SURFACE REMOVAL BUTT JOINT	472.0
40800050	TON	INCIDENTAL HOT-MIX ASPHALT SURFACING	225.0
48101200	TON	AGGREGATE SHOULDERS, TYPE B	3125.0
* 78001110	FOOT	PAINT PAVEMENT MARKING-LINE 4"	66088.0
40603310	TON	HOT-MIX ASPHALT SURFACE COURSE MIX "C" N50	5204.0
40603080	TON	HOT-MIX ASPHALT BINDER COURSE IL 19.0 N50	4189.0
40600625	TON	LEVELING BINDER (MACHINE METHOD) N50	1360
67100100	LS	MOBILIZATION	1

* SPECIALTY ITEM



CLASS IV ROAD 20 YEAR DESIGN

	STA 0+00 TO 137+00	NORTH 137+00 TO 270+55
CURRENT ADT (2000)	325	225
(20 year) DESIGN ADT (2026)	420	291
SDT	381	264
YEAR (2013) P.C. 86% ADT	329	227
S.U. 7% ADT	26	19
M.U. 7% ADT	26	18
T.F. =	0.0235	0.0164
I.B.R. =	3.0	3.0
Dt =	2.33	2.20
Provided	2.78	2.25
PROPOSED BITUMINOUS RESURFACING:	1 1/4" SURFACE CSE.	1 1/2" SURFACE CSE.
STA. 0+00 TO 216+50	2 1/4" BINDER CSE.	0 BINDER CSE.

FUNCTIONAL CLASSIFICATION = MAJOR COLLECTOR

APPROVED: December 18, 2007
George P. Meister
MARSHALL COUNTY ENGINEER

PASSED: 11-12-07
John M. Valle
DISTRICT ENGINEER OF LOCAL ROADS & STREETS

Releasing For: JAN 13, 2007
Limited Review: *John M. Valle*
REGIONAL ENGINEER

STATE OF ILLINOIS
DEPARTMENT OF TRANSPORTATION

PLANS PREPARED BY:
GEORGE P. MEISTER
COUNTY ENGINEER
REGISTERED PROFESSIONAL ENGINEER
George P. Meister
Reg. No. 62-35763
Exp. Date 11-30-07



J.U.L.I.E. 1-800-892-0123

NET LENGTH OF SECTION 27,055.00 FEET = 5.12405 MILES