

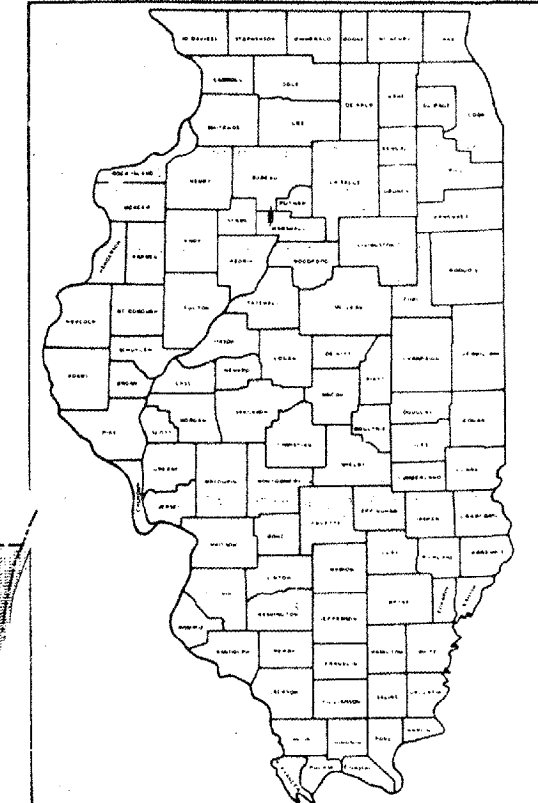
FAS ROUTE NO.	COUNTY	SECTION	CO. HWY. NO.	SHEET NO.	TOTAL SHEETS
249	MARSHALL	03-00083-00-RS	7	1	5

STATE OF ILLINOIS
DEPARTMENT OF TRANSPORTATION
DIVISION OF HIGHWAYS
PLANS FOR PROPOSED FEDERAL AID
SECONDARY
FEDERAL AID SECONDARY 249 (C. H. 7)
SECTION 03-00083-00-RS
PROJECT RS(249) 105
MARSHALL COUNTY
JOB NO. C-94-082-06
CONTRACT NO. 89400

INDEX OF SHEETS

SHEET NO. 1	COVER SHEET AND SUMMARY OF QUANTITIES
SHEET NO. 2	TABULATION OF QUANTITIES
SHEET NO. 3	TYPICAL CROSS SECTION, MAILBOX TURNOUT, ENTRANCE DETAILS, BUTT JOINT AND TAPER DETAILS
SHEET NO. 4	INTERSECTION DETAILS
SHEET NO. 5	INTERSECTION DETAIL, BARRICADE AND SIGN PLACEMENT MAP

STANDARDS: 701311-02 LANE CLOSURE TWO LANE, TWO WAY MOVING OPERATIONS - DAY ONLY FOR SPEEDS LESS THAN 45 MPH
702001-06 TRAFFIC CONTROL DEVICES
780001-01 TYPICAL PAVEMENT MARKINGS
BLR 22-4 TYPICAL APPLICATION OF TRAFFIC CONTROL DEVICES TWO LANE, TWO WAY, RURAL, OVER ONE DAY

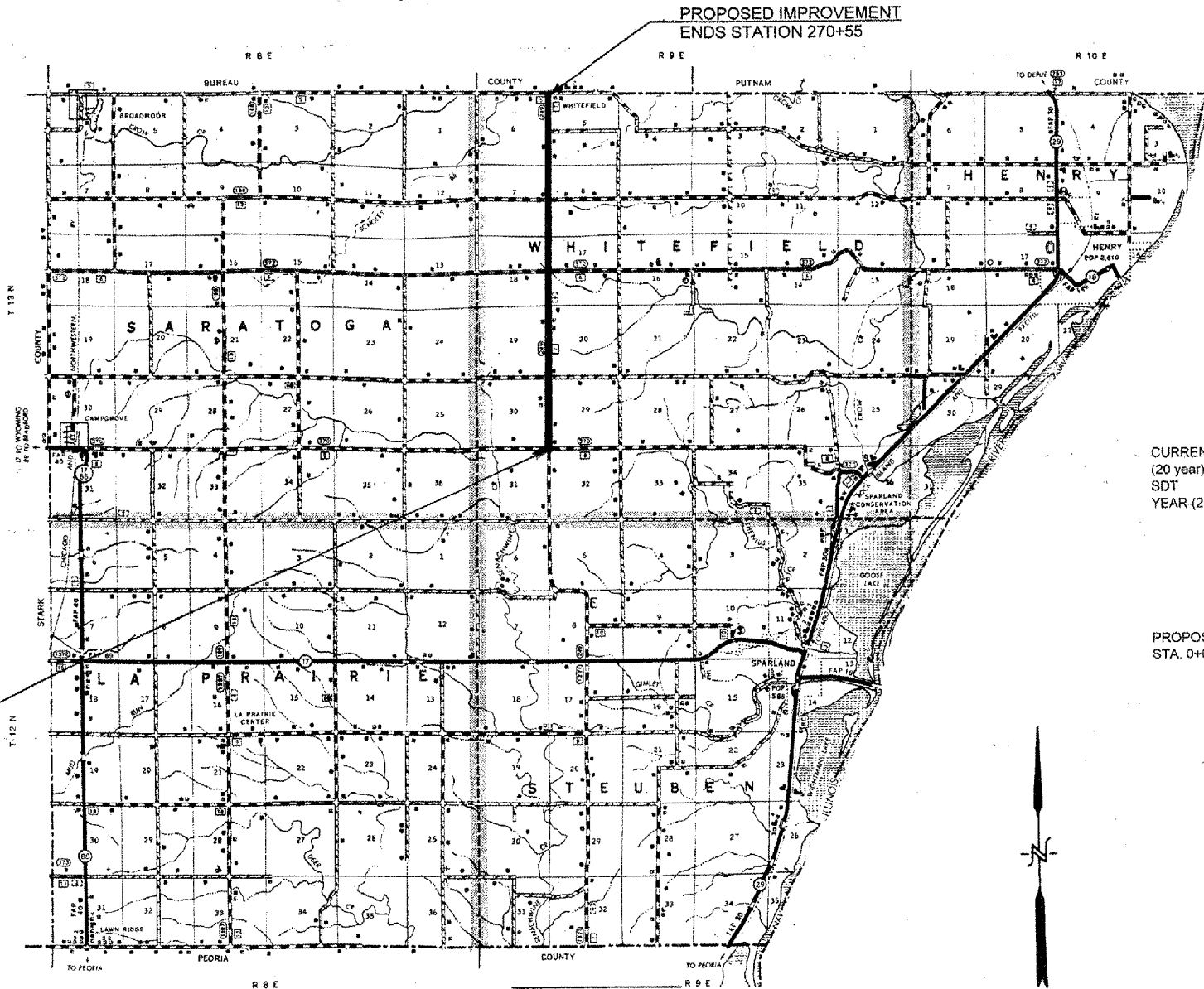


LOCATION OF SECTION INDICATED THUS: —

SUMMARY OF QUANTITIES
CONSTRUCTION CODE 1000

CODE NO.	UNIT	ITEM	QUANTITY
40600100	GALLON	BITUMINOUS MATERIALS (PRIME COAT)	6859.0
40600982	SQ YD	HOT-MIX ASPHALT SURFACE REMOVAL BUTT JOINT	472.0
40800050	TON	INCIDENTAL HOT-MIX ASPHALT SURFACING	225.0
48101200	TON	AGGREGATE SHOULDERS, TYPE B	3125.0
* 78001110	FOOT	PAINT PAVEMENT MARKING-LINE 4"	66088.0
40603310	TON	HOT-MIX ASPHALT SURFACE COURSE MIX "C" N50	5204.0
40603080	TON	HOT-MIX ASPHALT BINDER COURSE IL 19.0 N50	4189.0
40600625	TON	LEVELING BINDER (MACHINE METHOD) N50	1360
67100100	LS	MOBILIZATION	1

* SPECIALTY ITEM



CLASS IV ROAD 20 YEAR DESIGN

		STA 0+00 TO 137+00	NORTH
CURRENT ADT (2000)		325	225
(20 year) DESIGN ADT (2026)		420	291
SDT	ADT	381	264
YEAR (2013)	P.C. 86%	ADT 329	227
	S.U. 7%	ADT 26	19
	M.U. 7%	ADT 26	18
	T.F. =	0.0235	0.0164
	I.B.R. =	3.0	3.0
	Dt =	2.33	2.20
	Provided	2.78	2.25
PROPOSED BITUMINOUS RESURFACING:			
STA. 0+00 TO 216+50	1 1/4" SURFACE CSE.	1 1/2" SURFACE CSE.	
	2 1/4" BINDER CSE.	0 BINDER CSE.	

FUNCTIONAL CLASSIFICATION = MAJOR COLLECTOR

APPROVED	December 18 2007
	<i>George P. Meister</i> MARSHALL COUNTY ENGINEER
PASSED	11-12 07 <i>John M. Valle</i> DISTRICT ENGINEER OF LOCAL ROADS & STREETS
Released For Use Based on Limited Review	JAN 13 2007 <i>John M. Valle</i> REGIONAL ENGINEER STATE OF ILLINOIS DEPARTMENT OF TRANSPORTATION

PLANS PREPARED BY:
GEORGE P. MEISTER
COUNTY ENGINEER
REGISTERED PROFESSIONAL ENGINEER
George P. Meister
Reg. No. 62-35763
Exp. Date 11-30-07



J.U.L.I.E. 1-800-892-0123

NET LENGTH OF SECTION 27,055.00 FEET = 5.12405 MILES

TABULATION OF QUANTITIES

FAS ROUTE NO.	COUNTY	SECTION	CO. HWY. NO.	SHEET NO.	TOTAL SHEETS
249	MARSHALL	03-00183-00-RS	7	2	5

40600100 BITUMINOUS MATERIALS (PRIME COAT)

LOCATION	WIDTH	QUANTITY REQUIRED
STA. 0+00-270+55 (MAIN LANES)	22.0'	6613.4 GAL
ENTIRE SECTION (INTERSECTIONS)	VAR	102.7 GAL
ENTIRE SECTION (SIDE ROADS)	VAR	67.9 GAL
ENTIRE SECTION (ENTRANCES/MAILBOX TURNOUTS)	VAR	<u>74.4 GAL</u>
		6858.4 GAL
RATE OF APPL = 0.1 GAL/SQ YD		TOTAL
		6858.4 (USE 6859 GAL)

40600982 HOT-MIX ASPHALT SURFACE REMOVAL BUTT JOINT

LOCATION	WIDTH	QUANTITY REQUIRED
STA. 0+00 (MAIN LANES)	22.0'	61.1 SQ YD
LT STA. 3+00 (INTERSECTION)	21.0'	58.3 SQ YD
RT STA. 3+00 (INTERSECTION)	21.0'	58.3 SQ YD
LT STA. 136+28 (INTERSECTION)	21.0'	58.3 SQ YD
RT STA. 136+28 (INTERSECTION)	21.0'	58.3 SQ YD
LT STA. 270+14 (INTERSECTION)	21.0'	58.3 SQ YD
RT STA. 270+14 (INTERSECTION)	21.0'	58.3 SQ YD
STA. 270+55 (MAIN LANES)	22.0'	<u>61.1 SQ YD</u>
		472.0 SQ YD
TOTAL		472.0 (USE 472 SQ YD)

40800050 INCIDENTAL HOT-MIX ASPHALT SURFACING

LOCATION	WIDTH	QUANTITY REQUIRED
*LT STA. 3+00 (INTERSECTION)	VAR.	31.3 TON
*RT STA. 3+00 (INTERSECTION)	VAR.	31.3 TON
*LT STA. 53+29 (INTERSECTION)	85'	20.6 TON
*RT STA. 53+29 (INTERSECTION)	85'	20.6 TON
*LT STA. 136+28 (INTERSECTION)	VAR.	34.4 TON
*RT STA. 136+28 (INTERSECTION)	VAR.	41.8 TON
LT STA. 189+08 (INTERSECTION)	85'	8.8 TON
RT STA. 189+08 (INTERSECTION)	85'	8.8 TON
LT STA. 270+14 (INTERSECTION)	VAR.	13.4 TON
RT STA. 270+14 (INTERSECTION)	VAR.	<u>13.4 TON</u>
		224.4 TON
RATE OF APPL. = 112 LB./S.Y./IN.		TOTAL
		224.4 (USE 225 TON)

48101200 AGGREGATE SHOULDERS, TYPE B

LOCATION	WIDTH	QUANTITY REQUIRED
STA. 0+00 TO 135+00 (MAIN LANES)	3'	2080.0 TON
STA. 135+00 TO 270+55 (MAIN LANES)	3'	<u>1044.2 TON</u>
		3124.2 TON
RATE OF APPL. = 2.08T/C.Y.		TOTAL
		3124.2 (USE 3125 TON)

78001110 PAINT PAVEMENT MARKING 4"

LOCATION	WIDTH	QUANTITY REQUIRED
STA. 0+00 TO 270+55 (EDGE LINES)	4"	54110.0 FT
STA. 0+00 TO 270+55 (CENTERLINE)	4"	6763.8 FT.
ENTIRE SECTION (NO PASSING ZONES)	4"	<u>5214.0 FT</u>
		66087.8 FT
TOTAL		66087.8 (USE 66088 FT)

40603310 HOT-MIX ASPHALT SURFACE COURSE MIX "C" N50

LOCATION	WIDTH	QUANTITY REQUIRED
STA. 0+00 TO 137+00 (MAIN LANES 1 1/4")	22.0'	2344.2 TON
STA. 137+00 TO -270+55 (MAIN LANES 1 1/2")	22.0'	2742.2 TON
ENTIRE SECTION (ENTRANCES)	VAR.	98.6 TON
ENTIRE SECTION (MAILBOX TURNOUTS)	VAR.	<u>18.5 TON</u>
		5203.5 TON
RATE OF APPL. = 112 LB./S.Y./IN.		TOTAL
		5203.5 (USE 5204 TON)

40603080 HOT-MIX ASPHALT BINDER COURSE IL 19.0 N50

LOCATION	WIDTH	QUANTITY REQUIRED
STA 1+00 TO 137+00 (2 1/4")	22.0'	<u>4188.8 TON</u>
		4188.8 TON
RATE OF APPL. = 112 LB./S.Y./IN.		TOTAL
		4188.8 (USE 4189 TON)

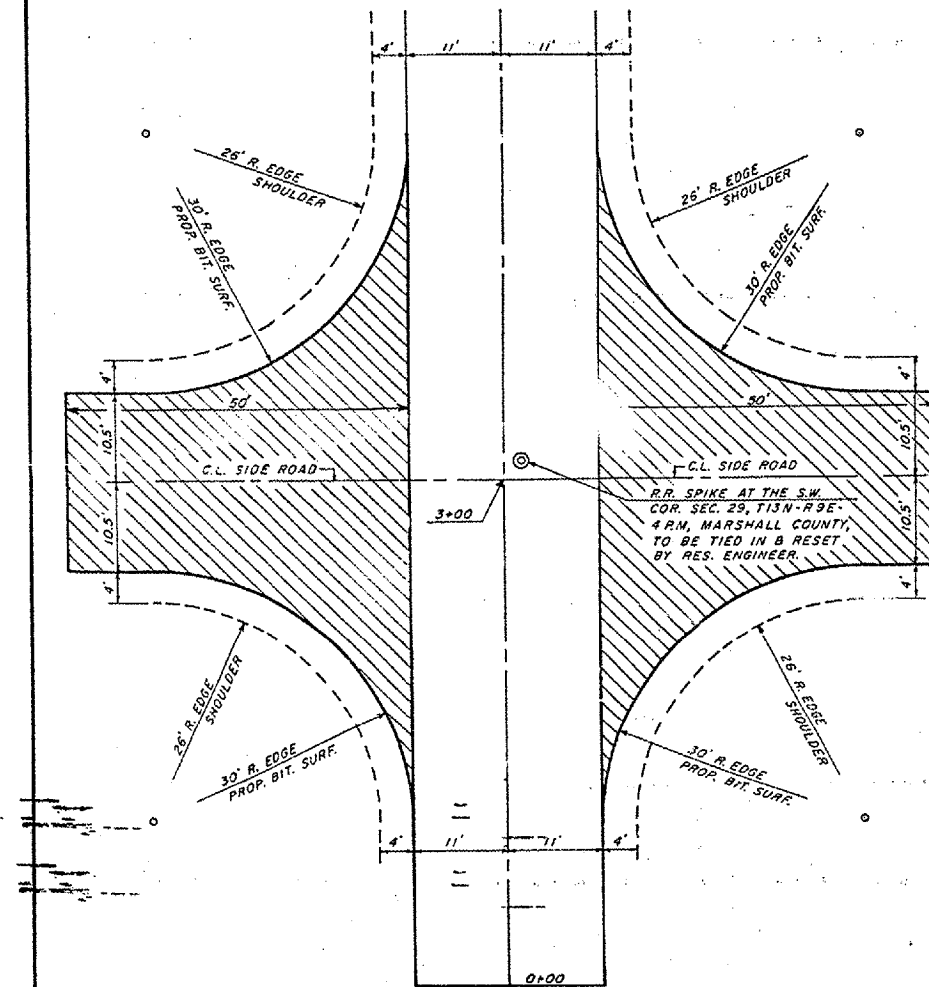
40600625 LEVELING BINDER (MACHINE METHOD) N50

LOCATION	WIDTH	QUANTITY REQUIRED
STA. 3+50 TO 136+00 (3/4")	22.0'	<u>1360.3 TON</u>
		1360.3 TON
RATE OF APPL. = 112 LB./S.Y./IN.		TOTAL
		1360.3 (USE 1360 TON)

FAS ROUTE NO.	COUNTY	SECTION	CO. HWY. NO.	SHEET NO.	TOTAL SHEETS
130	MARSHALL	03-00083-00-RS	7	4	5

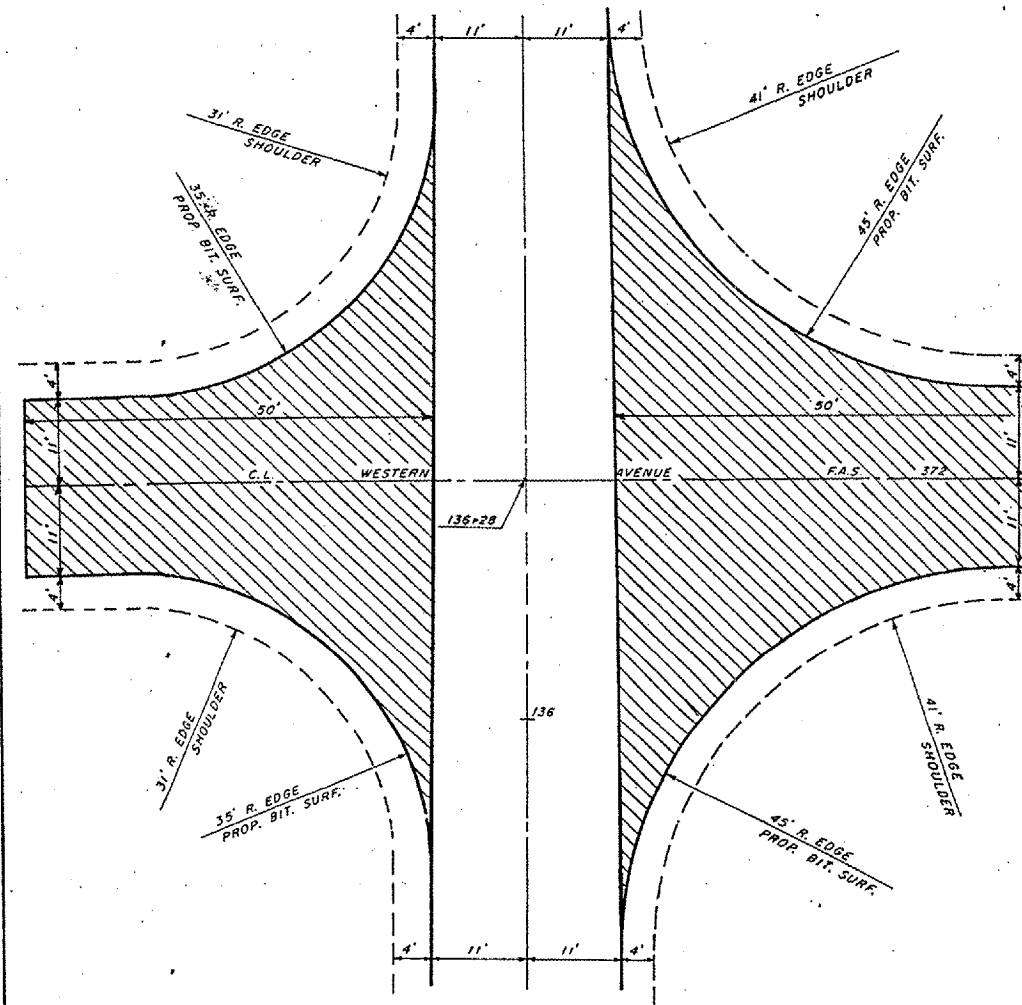
BEGINNING INTERSECTION DETAIL
LT. & RT. STA 3+00

Total Area LT. 159.7 SQ YDS
 Total Area RT. 159.7 SQ YDS
 Thickness Required 3 1/2" COMP.
 Incidental Hot-Mix Asphalt Surfacing Required LT. 31.3 TON
 Incidental Hot-Mix Asphalt Surfacing Required RT. 31.3 TON
 Hot-Mix Asphalt Surface Removal Butt Joint LT. & RT. 116.6 SQ YDS



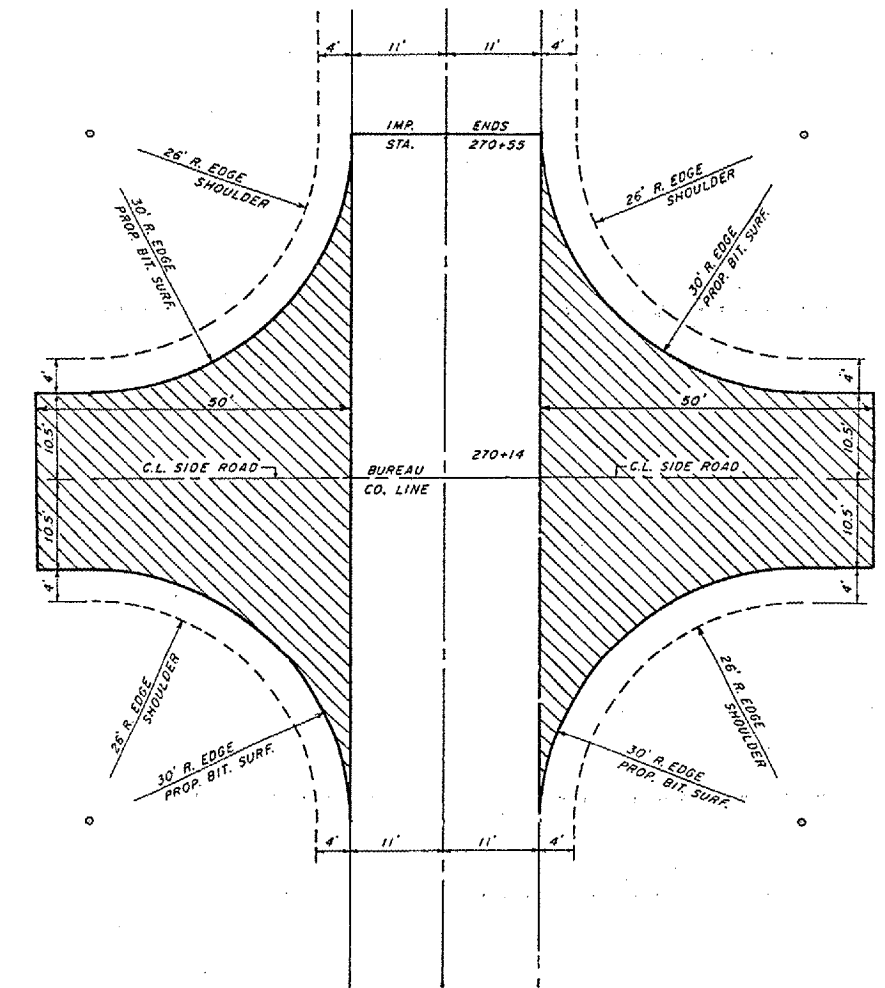
WESTERN AVENUE INTERSECTION DETAIL
LT. & RT. STA. 136+28

Total Area LT. 175.3 SQ YDS
 Total Area RT. 213.3 SQ YDS
 Thickness Required 3 1/2" COMP.
 Incidental Hot-Mix Asphalt Surfacing Required LT. 34.4 TON
 Incidental Hot-Mix Asphalt Surfacing Required RT. 41.8 TON
 Hot-Mix Asphalt Surface Removal Butt Joint LT. & RT. 116.6 SQ YDS



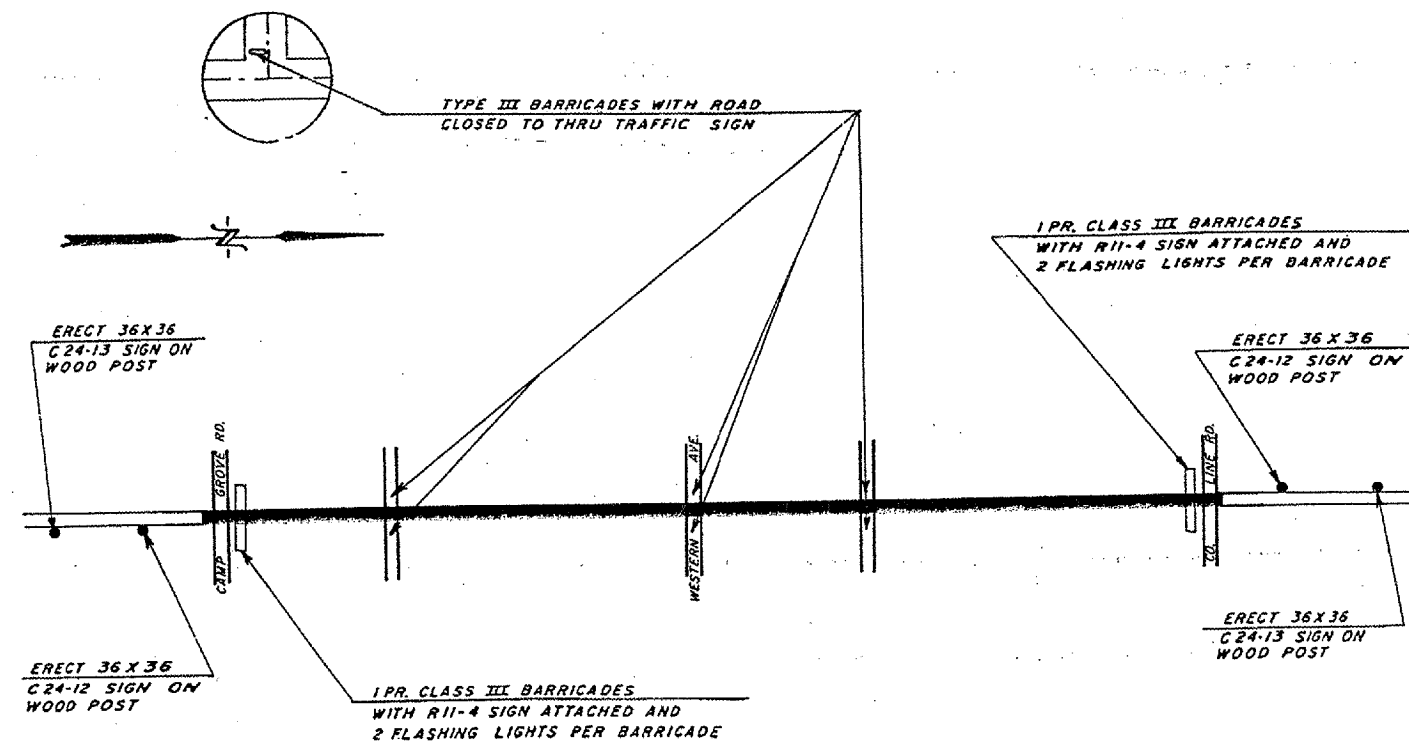
ENDING INTERSECTION DETAIL
LT. & RT. STA. 270+14

Total Area LT. 159.7 SQ YDS
 Total Area RT. 159.7 SQ YDS
 Thickness Required 1 1/2" COMP.
 Incidental Hot-Mix Asphalt Surfacing Required LT. 13.4 TON
 Incidental Hot-Mix Asphalt Surfacing Required RT. 13.4 TON
 Hot-Mix Asphalt Surface Removal Butt Joint LT. & RT. 116.6 SQ YDS



FAS ROUTE NO.	COUNTY	SECTION	CO. HWY. NO.	SHEET NO.	TOTAL SHEETS
219	MARSHALL	03-00083-00-RS	7	3	3

LOCATION MAP SHOWING REQUIRED BARRICADE AND SIGN PLACEMENT

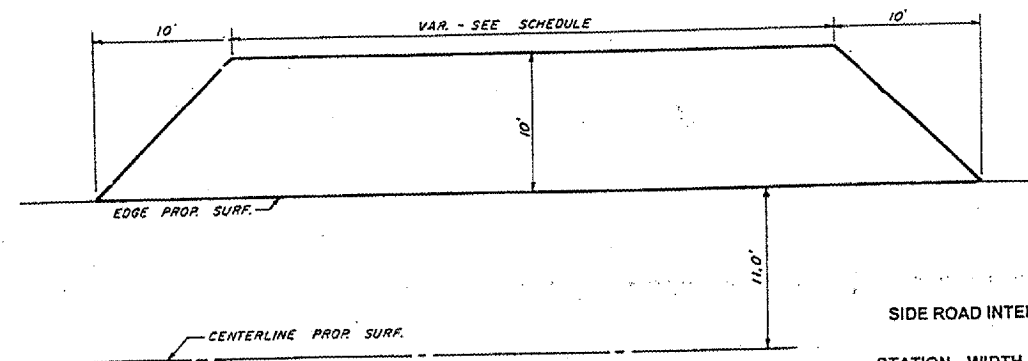


NOTE: REFER TO STANDARD 702001 FOR ERECTION OF SIGNS AND PLACEMENT OF TYPE III BARRICADES. TY. A LOW INTENSITY LIGHTS ARE REQUIRED ABOVE THE FIRST WARNING SIGN FROM EACH DIRECTION AS PER STANDARD BLR 22.

SIGN LEGEND

C24-12	ROAD CLOSED 500 FT.
C24-13	ROAD CLOSED 1000 FT.
R11-4	ROAD CLOSED TO THRU TRAFFIC (WHITE)

INTERSECTION DETAIL
SCALE: 1" = 6'



SIDE ROAD INTERSECTION DETAIL

STATION	WIDTH	SQ YDS	TONS MIXT. REQUIRED
LT 53+29	85'	105.0	20.58
RT 53+29	85'	105.0	20.58
LT 189+08	85'	105.0	8.82
RT 189+08	85'	105.0	8.82
		420.0	58.8
		SQ YD	TON

STA. 53+29
CONSISTS OF 3 1/2" HOT-MIX ASPHALT SURFACE COURSE, MIX "C" N50

STA. 189+08
CONSISTS OF 1 1/2" HOT-MIX ASPHALT SURFACE COURSE, MIX "C" N50