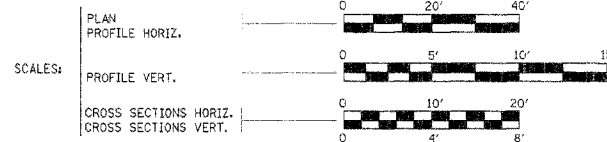


SECTION NO.	SECTION	COUNTY	SHEET NO.	TOTAL SHEETS
FAS 507	*	Vermilion	54	1
*05-00154-00-BR				

INDEX OF SHEETS

SHEET NO.	DESCRIPTION
1	COVER SHEET
2	SUMMARY OF QUANTITIES
3 - 5	SCHEDULE OF QUANTITIES
6	GENERAL NOTES
7	TYPICAL SECTIONS
8 - 10	GENERAL PLAN AND PROFILES
11 - 12	WATER LINE PLAN AND PROFILES
13 - 14	SANITARY SEWER PLAN AND PROFILES
15 - 17	STORM SEWER PLAN AND PROFILES
18 - 20	EROSION CONTROL PLANS
21 - 23	R.O.W. PLANS
24	WATER MAIN DETAILS
25	SEWER DETAILS
26	SANITARY SEWER DETAILS
27	PUMP STATION DETAILS
28	PAVEMENT DETAILS
29	INTERSECTION DETAILS
30	TRAFFIC CONTROL DETAILS
31 - 47	CROSS SECTIONS
48	BRIDGE - GENERAL PLAN & ELEVATION
49	SUPERSTRUCTURE DETAILS
50	STEEL RAILING TYPE SM (SPECIAL)
51	PEDESTRIAN RAILING (SPECIAL)
52 - 53	ABUTMENTS
54	BLOCK WALL DETAILS

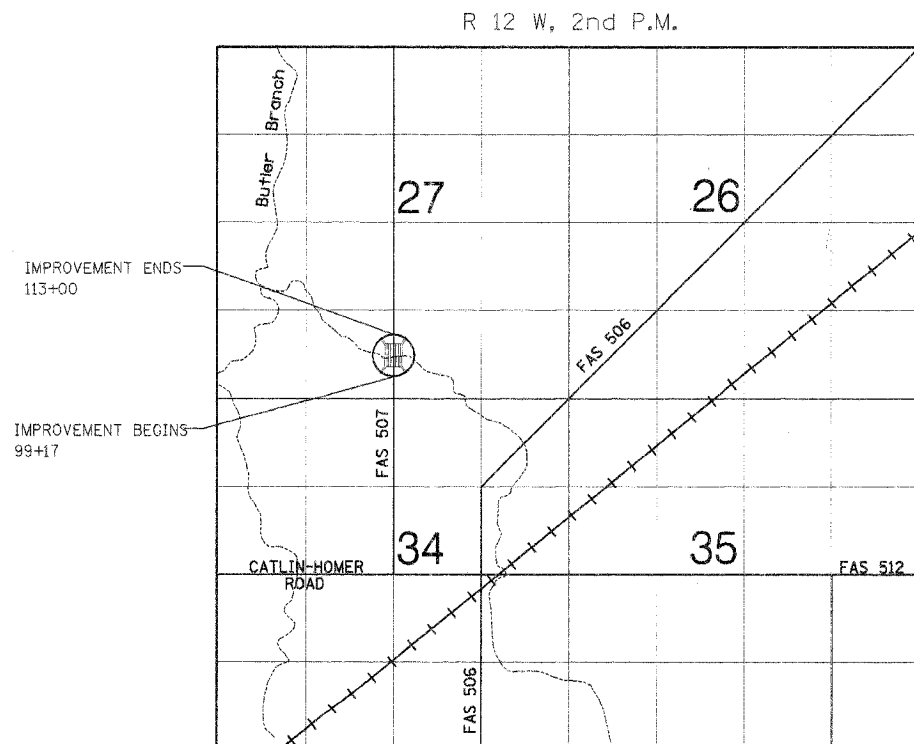
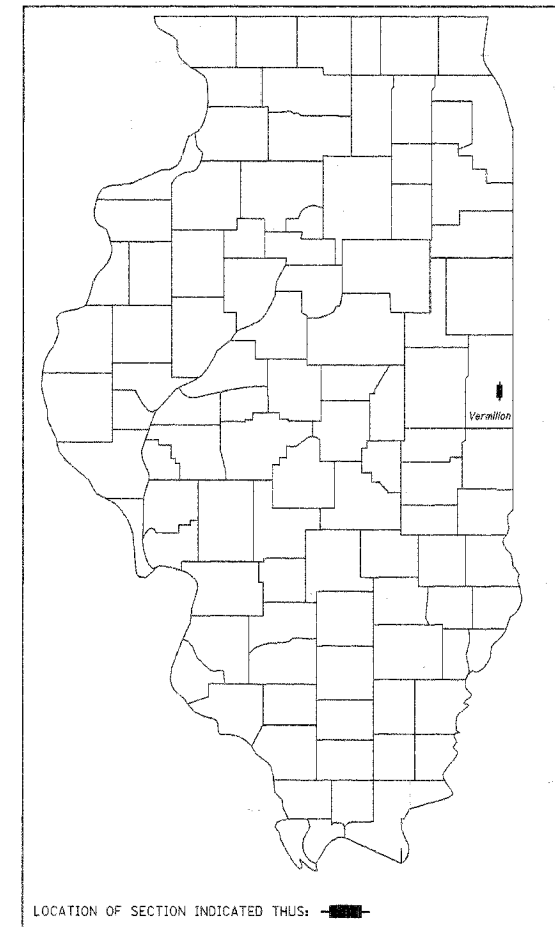
STATE OF ILLINOIS
DEPARTMENT OF TRANSPORTATION
**PLANS FOR PROPOSED
BRIDGE REPLACEMENT**



VERMILION COUNTY
SECTION 05-00154-00-BR
FAU 7060 / FAS 507
SECONDARY TRANSPORTATION
URBAN
PROJECT NO. M-5016(033)
JOB NO. C-95-301-06

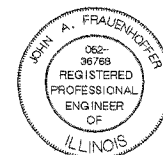
ILLINOIS DEPT. OF TRANSPORTATION STANDARD DRAWINGS

STANDARD NO.	DESCRIPTION
00001-04	STANDARD SYMBOLS, ABBREVIATIONS, AND PATTERNS
280001-03	TEMPORARY EROSION CONTROL SYSTEMS
406201	MAILBOX TURNOUT
515001-02	NAME PLATE FOR BRIDGES
542301-01	PRECAST REINFORCED CONCRETE FLARED END SECTION
602301-01	INLET - TYPE A
602306-01	INLET - TYPE B
602401-01	MANHOLE - TYPE A
602601-01	PRECAST REINFORCED CONCRETE FLAT SLAB TOP
602701-01	CAST IRON STEPS
604006-02	FRAME AND GRATE - TYPE 3
604036-01	GRATE - TYPE 8
606001-03	CONCRETE CURB TYPE B AND COMBINATION CONCRETE CURB AND GUTTER
667001	DRAINAGE MARKERS
701006-02	OFF ROAD OPERATIONS, 2L, 2W, 15' TO 24' FROM PAVEMENT EDGE
701001-01	TRAFFIC CONTROL DEVICES
701501-03	URBAN LANE CLOSURE, 2L, 2W, UNDIVIDED
701801-03	LANE CLOSURE MULTILANE 1 L OR 1 W CROSSWALK OR SIDEWALK CLOSURE
702001-06	TRAFFIC CONTROL DEVICES
BLR 21-6	TYPICAL APPLICATION OF TRAFFIC CONTROL DEVICES FOR CONSTRUCTION OF RURAL LOCAL HIGHWAYS
BLR 24-1	MAILBOX TURNOUT FOR LOCAL ROADS



LOCATION MAP

PROPOSED STRUCTURE
STA. 107+78.15 SINGLE SPAN
PRECAST PRESTRESSED CONCRETE
DECK BEAM BRIDGE.
67.72' BK. TO BK ABUTMENTS
NO SKEW, 30'-0" O.-TO-O. OF DECK.
OLD STRUCTURE NO. - NONE
NEW STRUCTURE NO. 092-6040



John A. Frauenhoffer
JOHN ANTON FRAUENHOFFER
Illinois Licensed Professional Engineer Number 36768
License Expires November 30, 2007

APPROVED	12/08/06	20
	<i>Robert Andrews</i>	
	ROBERT ANDREWS, PE	COUNTY ENGINEER
APPROVED	12/08/06	20
	<i>Fred Reichert</i>	
	MAYOR	VILLAGE OF CATLIN
PASSED	12/19	20 06
	<i>Dale Smit</i>	
	DISTRICT FOUR ENGINEER OF	LOCAL ROADS & STREETS
Releasing For Bid Based on Limited Review	12/18	20 06
	<i>Joseph C. Cress</i>	
	DEPUTY DIRECTOR OF HIGHWAYS,	REGION FIVE ENGINEER
	STATE OF ILLINOIS DEPARTMENT OF TRANSPORTATION	