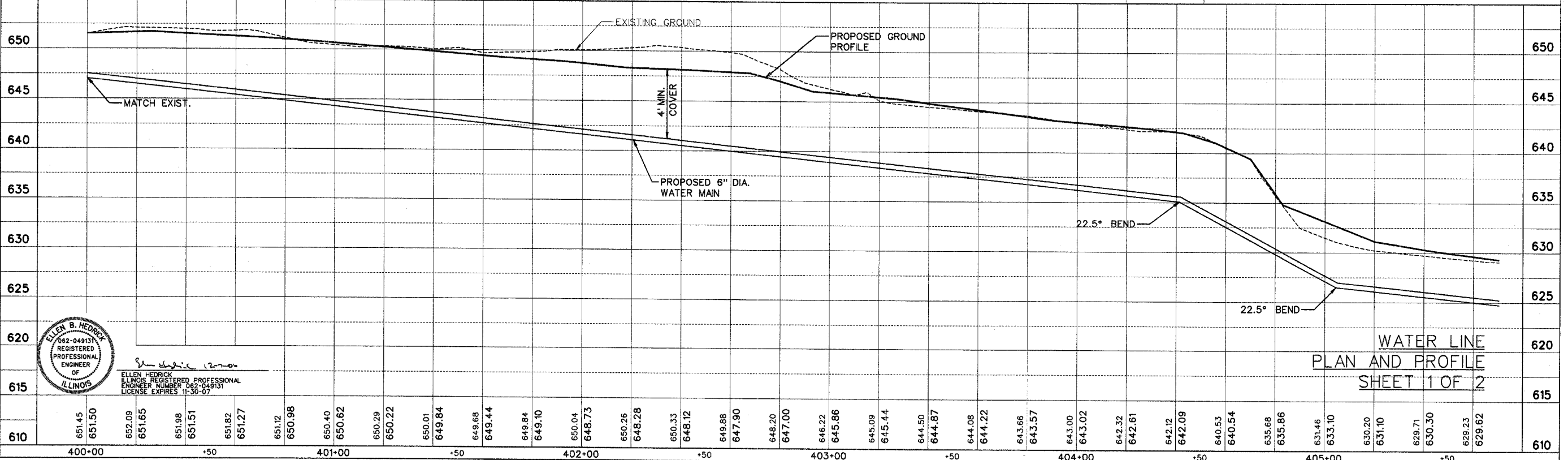
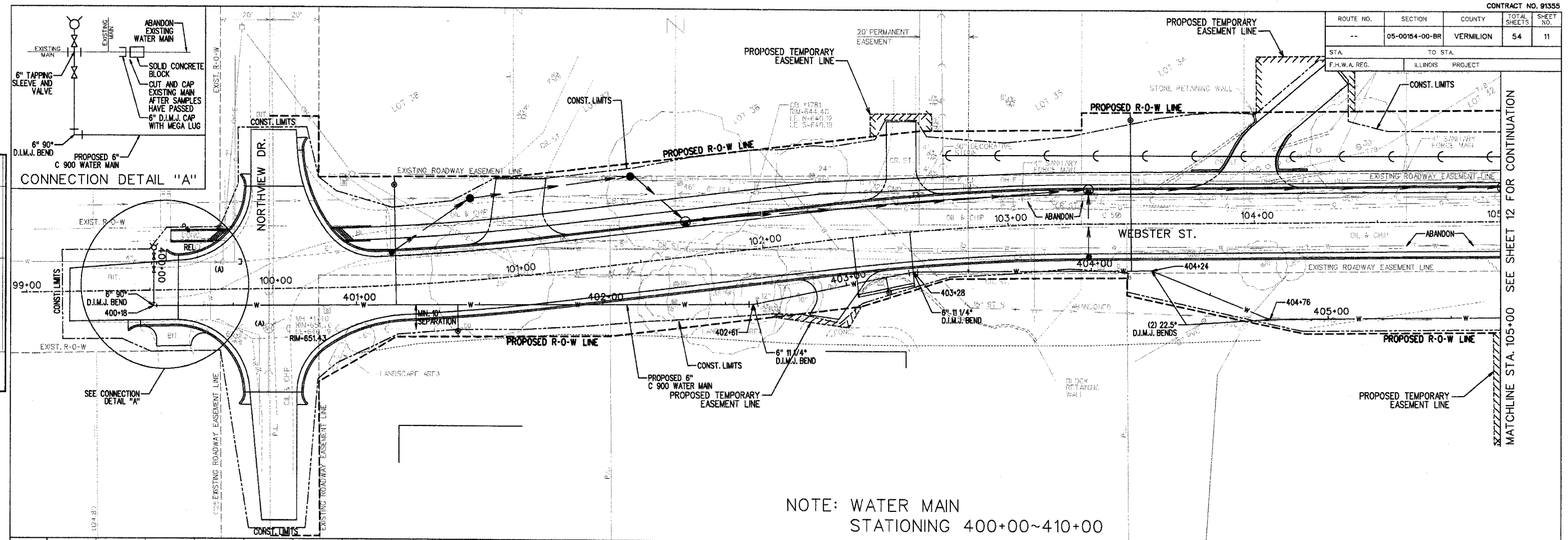


ROUTE NO.	SECTION	COUNTY	TOTAL SHEETS	SHEET NO.
--	05-00154-00-BR	VERMILION	54	11

STA.	TO STA.
F.H.W.A. REG.	ILLINOIS PROJECT



CATLIN WEBSTER STREET BRIDGE SECTION 05-00154-00-BR VERMILION COUNTY

PLAN  
 SURVEYED \_\_\_\_\_  
 NOTE BOOK ALIGNMENT CHECKED \_\_\_\_\_  
 NO. \_\_\_\_\_  
 DATE \_\_\_\_\_

PROF. BY \_\_\_\_\_  
 SURVEYED \_\_\_\_\_  
 NOTE BOOK GRADES CHECKED \_\_\_\_\_  
 NO. \_\_\_\_\_  
 DATE \_\_\_\_\_

ELLEN B. HEDRICK  
 062-049131  
 REGISTERED  
 PROFESSIONAL  
 ENGINEER  
 OF  
 ILLINOIS

ELLEN HEDRICK  
 ILLINOIS REGISTERED PROFESSIONAL  
 ENGINEER NUMBER 062-049131  
 LICENSE EXPIRES 11-30-07

WATER LINE  
 PLAN AND PROFILE  
 SHEET 1 OF 2