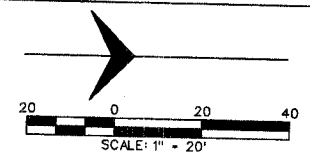
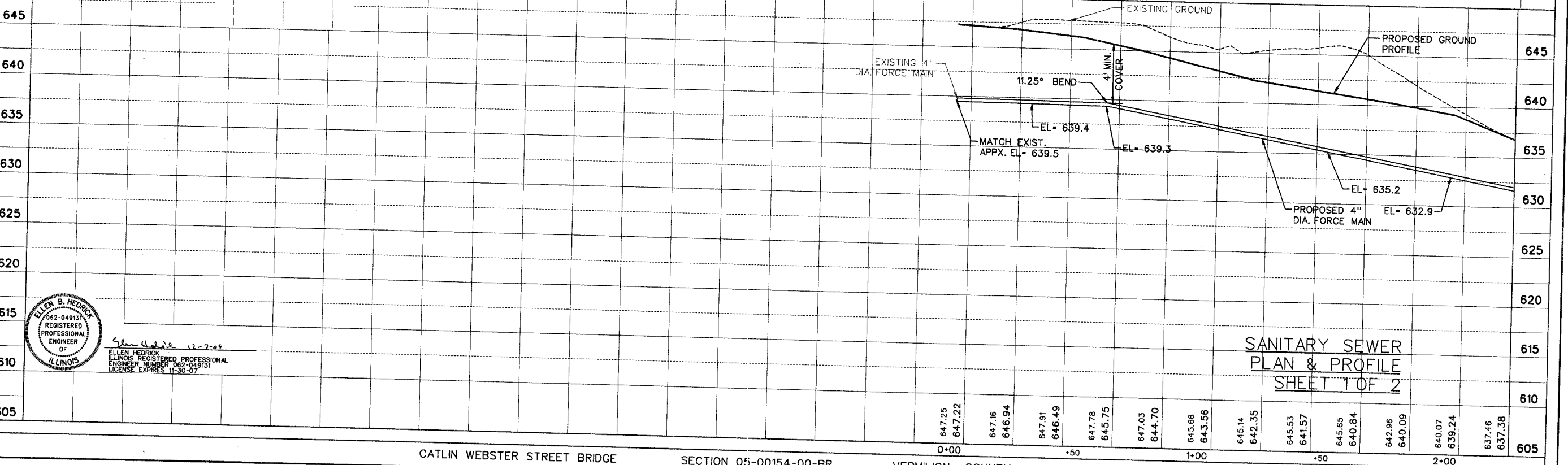
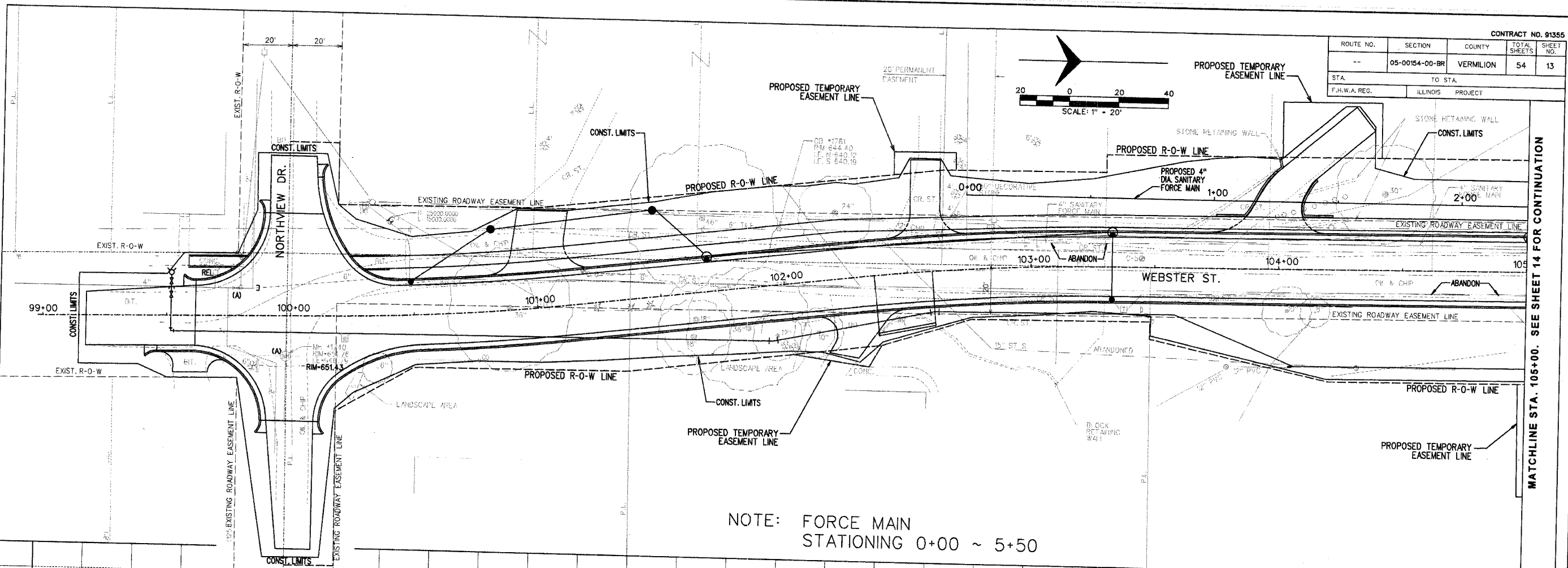


ROUTE NO.	SECTION	COUNTY	TOTAL SHEETS	SHEET NO.
05-00154-00-BR	VERMILION	54	13	
STA.	TO STA.			
F.H.W.A. REG.	ILLINOIS	PROJECT		



PLAN  
 SURVEYED BY \_\_\_\_\_ DATE \_\_\_\_\_  
 NOTE BOOK ALIGNED CHECKED \_\_\_\_\_  
 RT. OF WAY CHECKED \_\_\_\_\_  
 NO. \_\_\_\_\_

PROFILE  
 SURVEYED BY \_\_\_\_\_ DATE \_\_\_\_\_  
 NOTE BOOK GRADES CHECKED \_\_\_\_\_  
 B.M.S. NOTED \_\_\_\_\_  
 STRUCTURE NOTATIONS CHKD \_\_\_\_\_  
 NO. \_\_\_\_\_



ELLEN B. HEDRICK  
 062-049131  
 REGISTERED PROFESSIONAL ENGINEER OF ILLINOIS  
 ELLEN HEDRICK  
 ILLINOIS REGISTERED PROFESSIONAL ENGINEER NUMBER 062-049131  
 LICENSE EXPIRES 11-30-07

SANITARY SEWER  
 PLAN & PROFILE  
 SHEET 1 OF 2

\\plan sheets\plan 1.dwg 12/6/2006 2:42:52 PM