

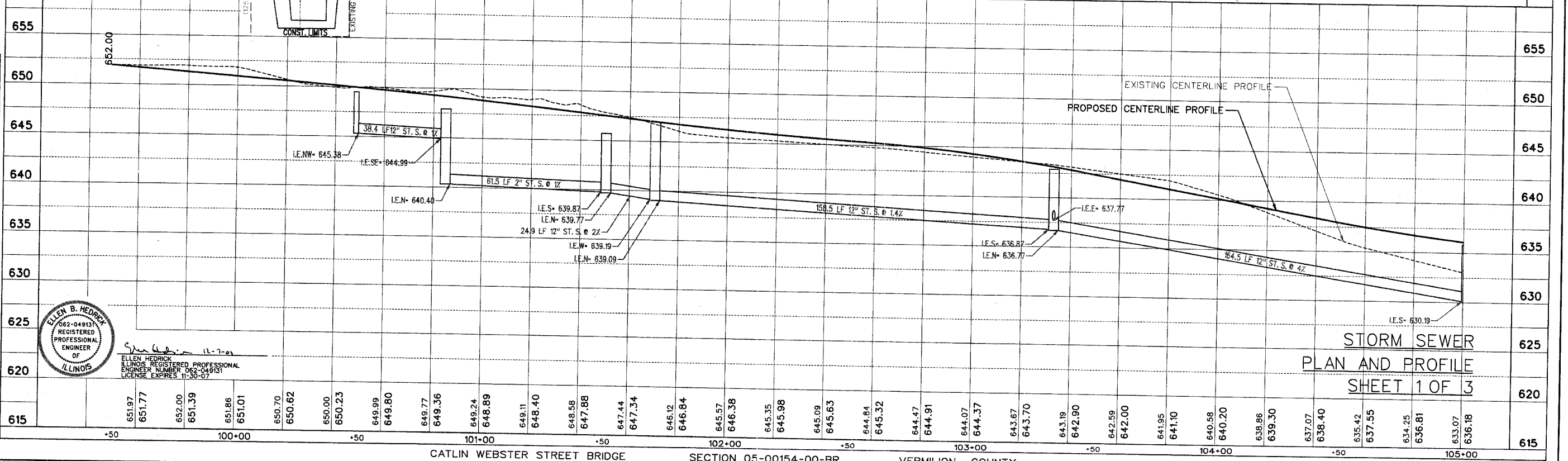
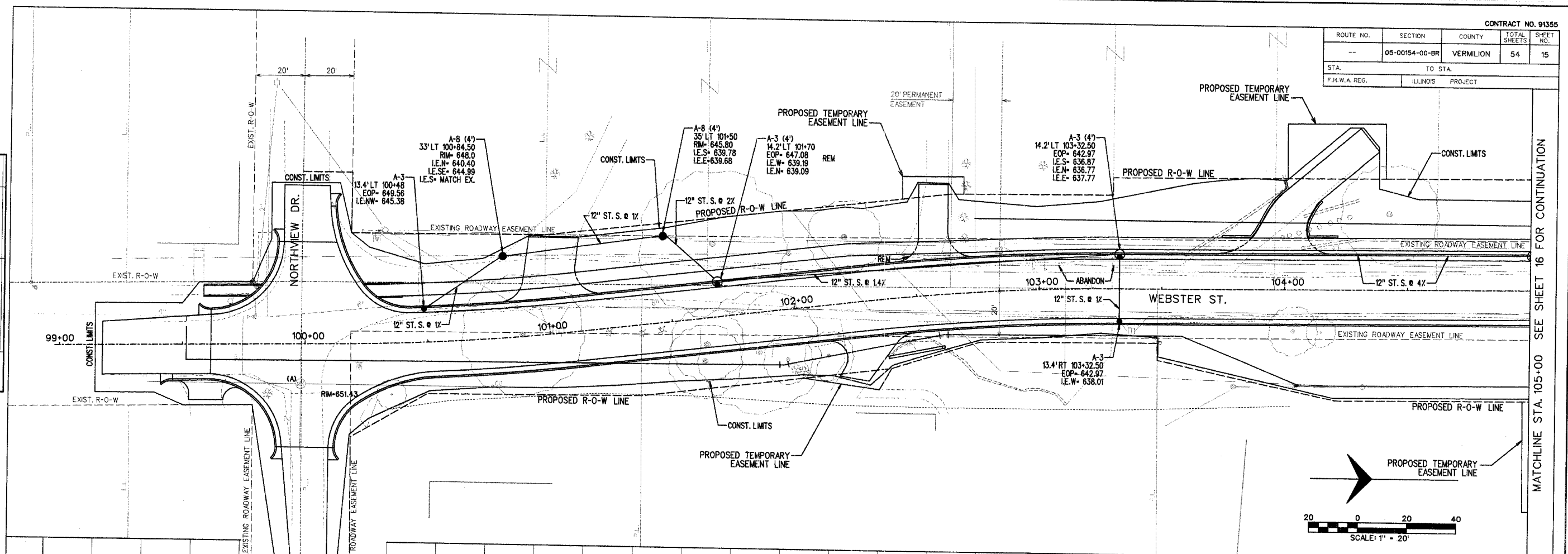
| ROUTE NO. | SECTION | COUNTY | TOTAL SHEETS | SHEET NO. |
|---------------|----------------|------------------|--------------|-----------|
| --- | 05-00154-00-BR | VERMILION | 54 | 15 |
| STA. TO STA. | | ILLINOIS PROJECT | | |
| F.H.W.A. REG. | | ILLINOIS PROJECT | | |

PLAN

| | |
|-----------------------------|----|
| DATE | BY |
| | |
| SURVEYED | |
| NOTE BOOK ALIGNMENT CHECKED | |
| NO. _____ | |
| RT. OF WAY CHECKED | |
| NO. _____ | |

PROFILE

| | |
|-----------------------------|----|
| DATE | BY |
| | |
| SURVEYED | |
| NOTE BOOK CHECKED | |
| NO. _____ | |
| STRUCTURE NOTATIONS CHECKED | |
| NO. _____ | |



ELLEN B. HEDRICK
 062-04913
 REGISTERED PROFESSIONAL ENGINEER
 OF ILLINOIS

Ellen Hedrick 11-7-09
 ELLEN HEDRICK
 ILLINOIS REGISTERED PROFESSIONAL ENGINEER
 ENGINEER NUMBER 062-04913
 LICENSE EXPIRES 11-30-07

STORM SEWER
 PLAN AND PROFILE
 SHEET 1 OF 3

MATCHLINE STA. 105+00 SEE SHEET 16 FOR CONTINUATION

