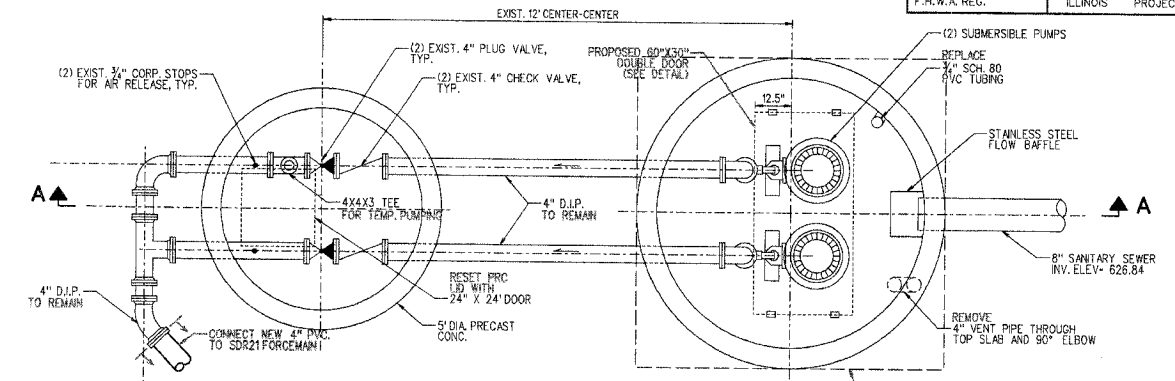
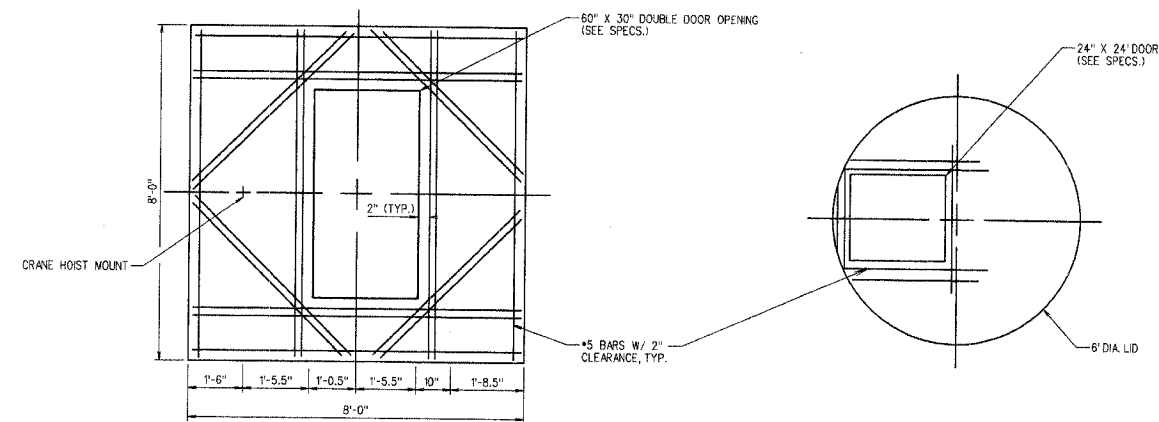


ROUTE NO.	SECTION	COUNTY	TOTAL SHEETS	SHEET NO.
--	05-00154-00-BR	VERMILION	54	27
STA.		TO STA.		
F.H.W.A. REG.		ILLINOIS PROJECT		

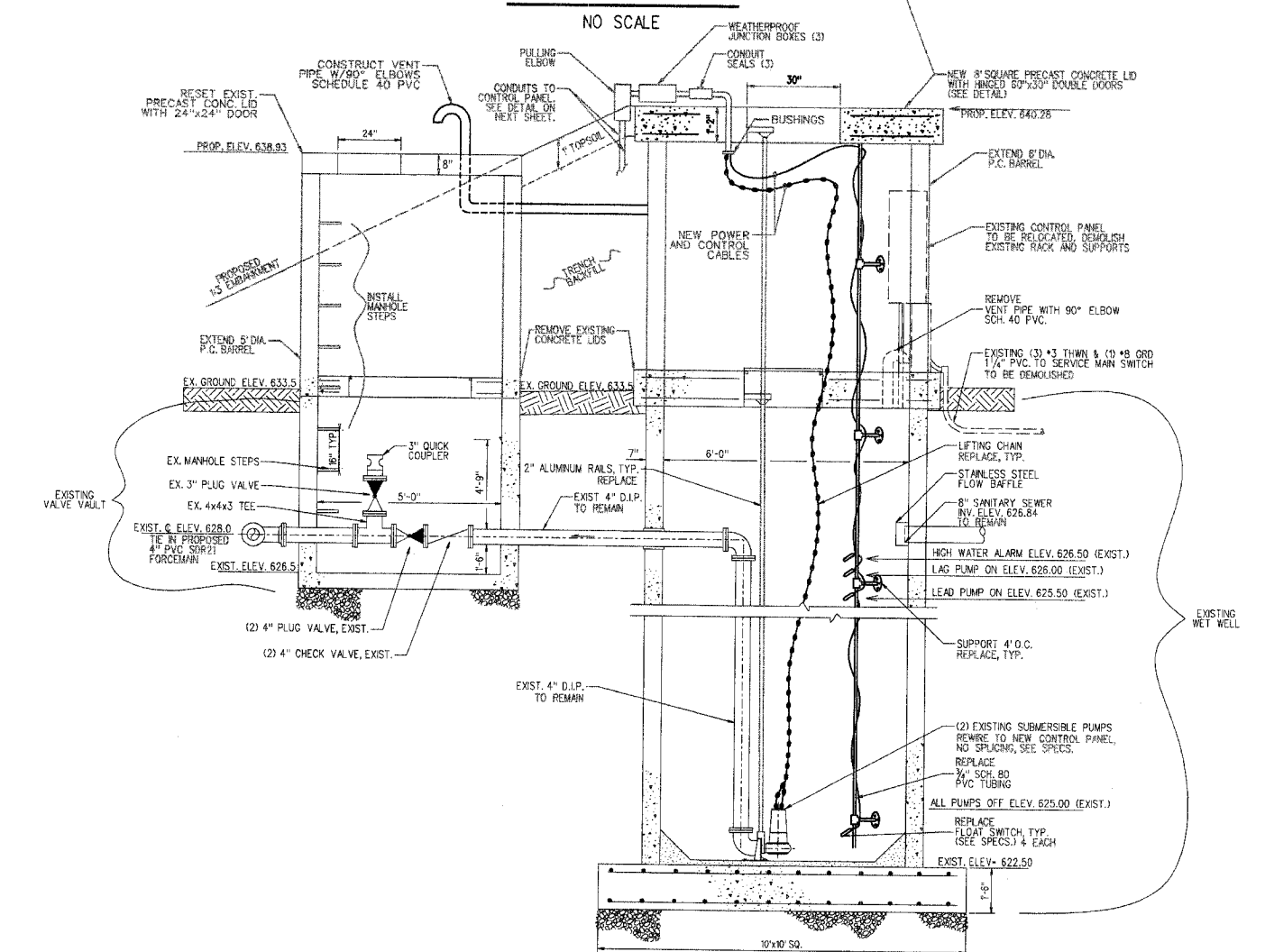
VERIFY DIMENSIONS WITH APPROVED MANUFACTURER'S SHOP DRAWINGS



PLAN VIEW
NO SCALE



PUMP STATION LID DETAILS
NO SCALE



SECTION A-A
PUMP STATION & VALVE VAULT ADJUSTMENTS
NO SCALE

PUMP STATION DETAILS

PLAN

DATE	BY

SURVEYED
PLOTTED
NOTE BOOK GRADES CHECKED
NO. _____
STRUCTURE NOTATIONS CHECKED

PROFILE

DATE	BY

SURVEYED
PLOTTED
NOTE BOOK GRADES CHECKED
NO. _____
STRUCTURE NOTATIONS CHECKED



Camelia Roman
ELLEN HEDRICK
REGISTERED PROFESSIONAL
ENGINEER
ILLINOIS REGISTERED PROFESSIONAL
ENGINEER NUMBER 062-049131
LICENSE EXPIRES 11-30-07