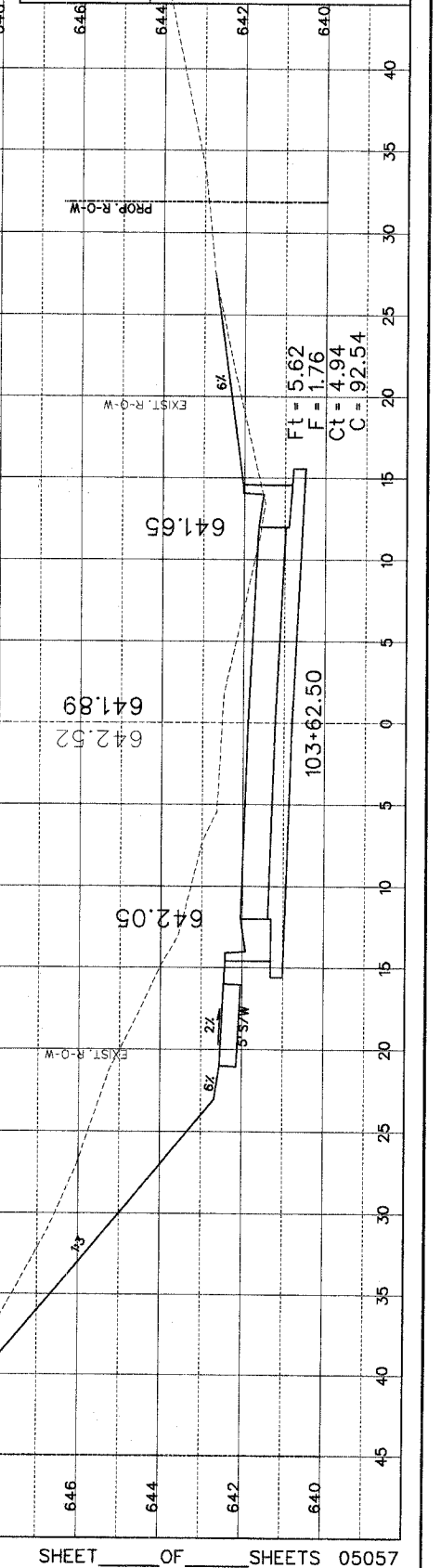
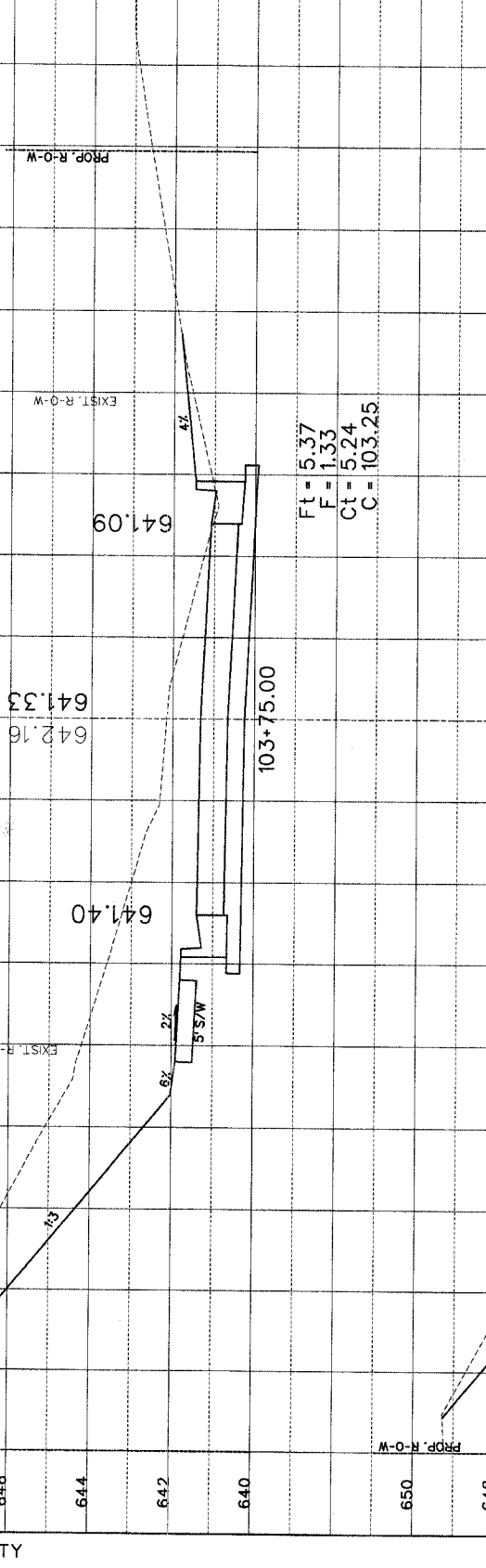


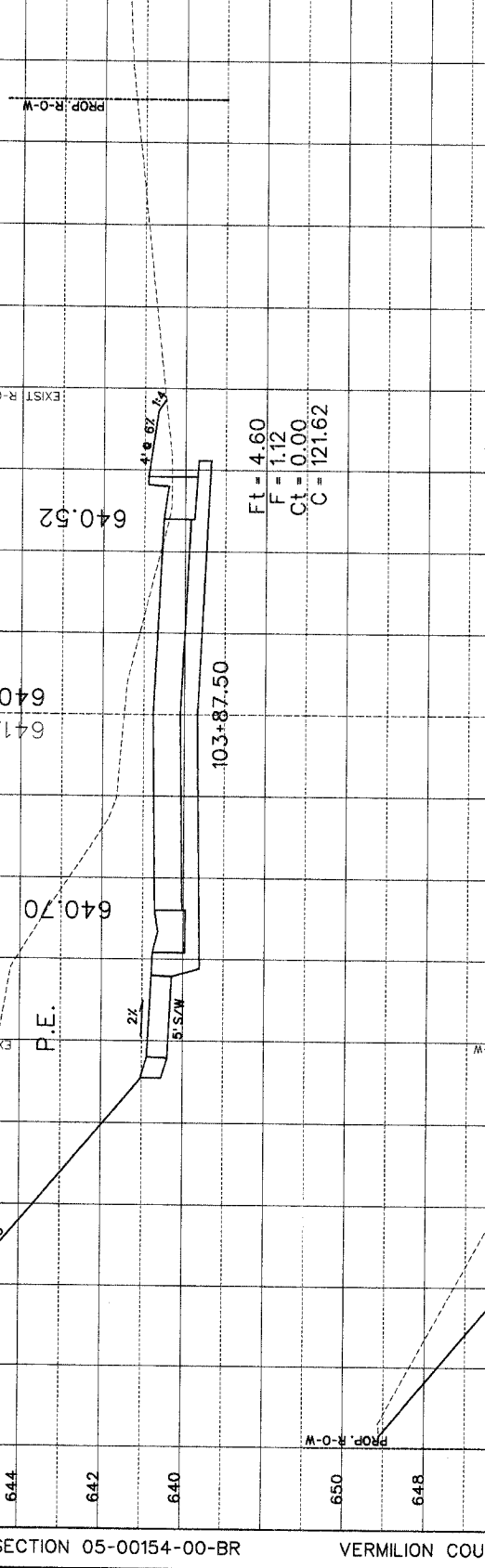
ROUTE NO.	SECTION	COUNTY	TOTAL SHEETS	SHEET NO.
--	05-00154-00-BR	VERMILION	54	35
STA. TO STA.		ILLINOIS PROJECT		
F.H.W.A. REG.		PROJECT		



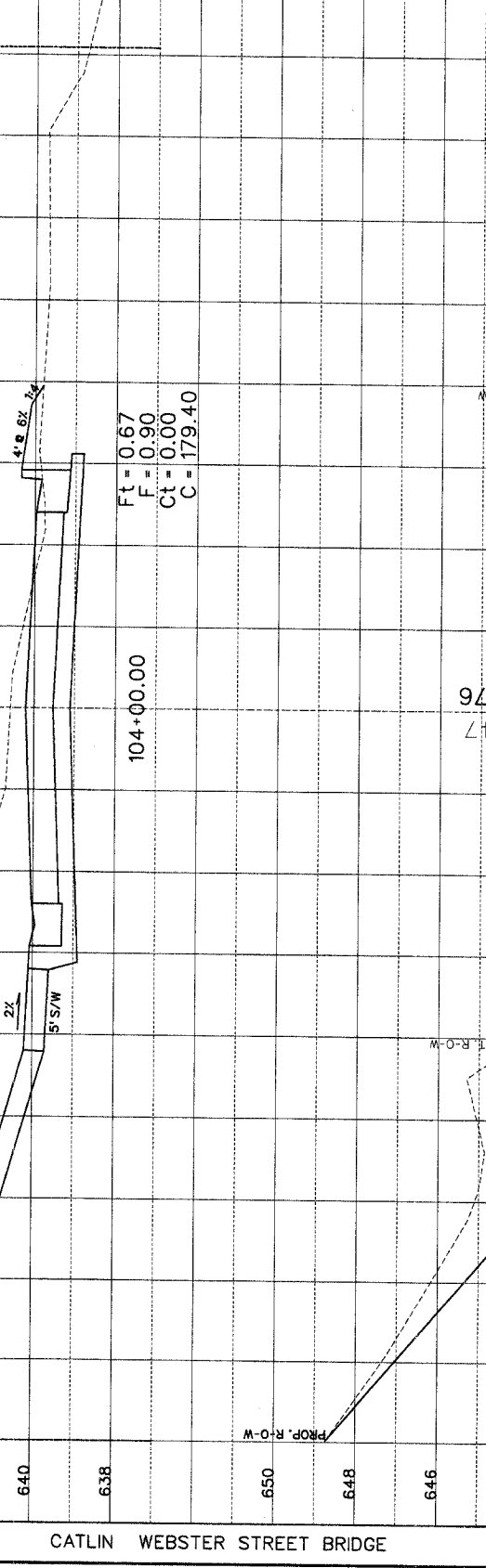
ROUTE NO.	SECTION	COUNTY	TOTAL SHEETS	SHEET NO.
--	05-00154-00-BR	VERMILION	54	35
STA. TO STA.		ILLINOIS PROJECT		
F.H.W.A. REG.		PROJECT		



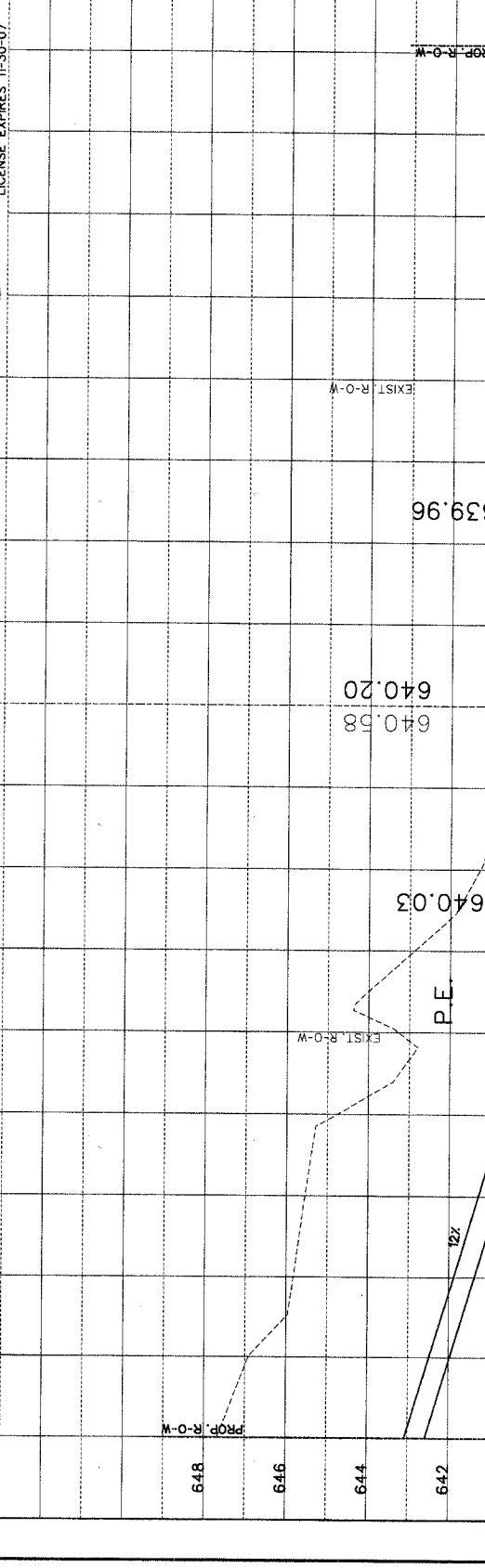
ROUTE NO.	SECTION	COUNTY	TOTAL SHEETS	SHEET NO.
--	05-00154-00-BR	VERMILION	54	35
STA. TO STA.		ILLINOIS PROJECT		
F.H.W.A. REG.		PROJECT		



ROUTE NO.	SECTION	COUNTY	TOTAL SHEETS	SHEET NO.
--	05-00154-00-BR	VERMILION	54	35
STA. TO STA.		ILLINOIS PROJECT		
F.H.W.A. REG.		PROJECT		



ROUTE NO.	SECTION	COUNTY	TOTAL SHEETS	SHEET NO.
--	05-00154-00-BR	VERMILION	54	35
STA. TO STA.		ILLINOIS PROJECT		
F.H.W.A. REG.		PROJECT		



ELLEN HEDRICK  
 REGISTERED PROFESSIONAL  
 ENGINEER NUMBER 062-049131  
 LICENSE EXPIRES 11-30-07



NO.	DATE	BY

NO.	DATE	BY

... \16057 Cross Section Sheets.dgn 12/5/2006 1:02:34 PM