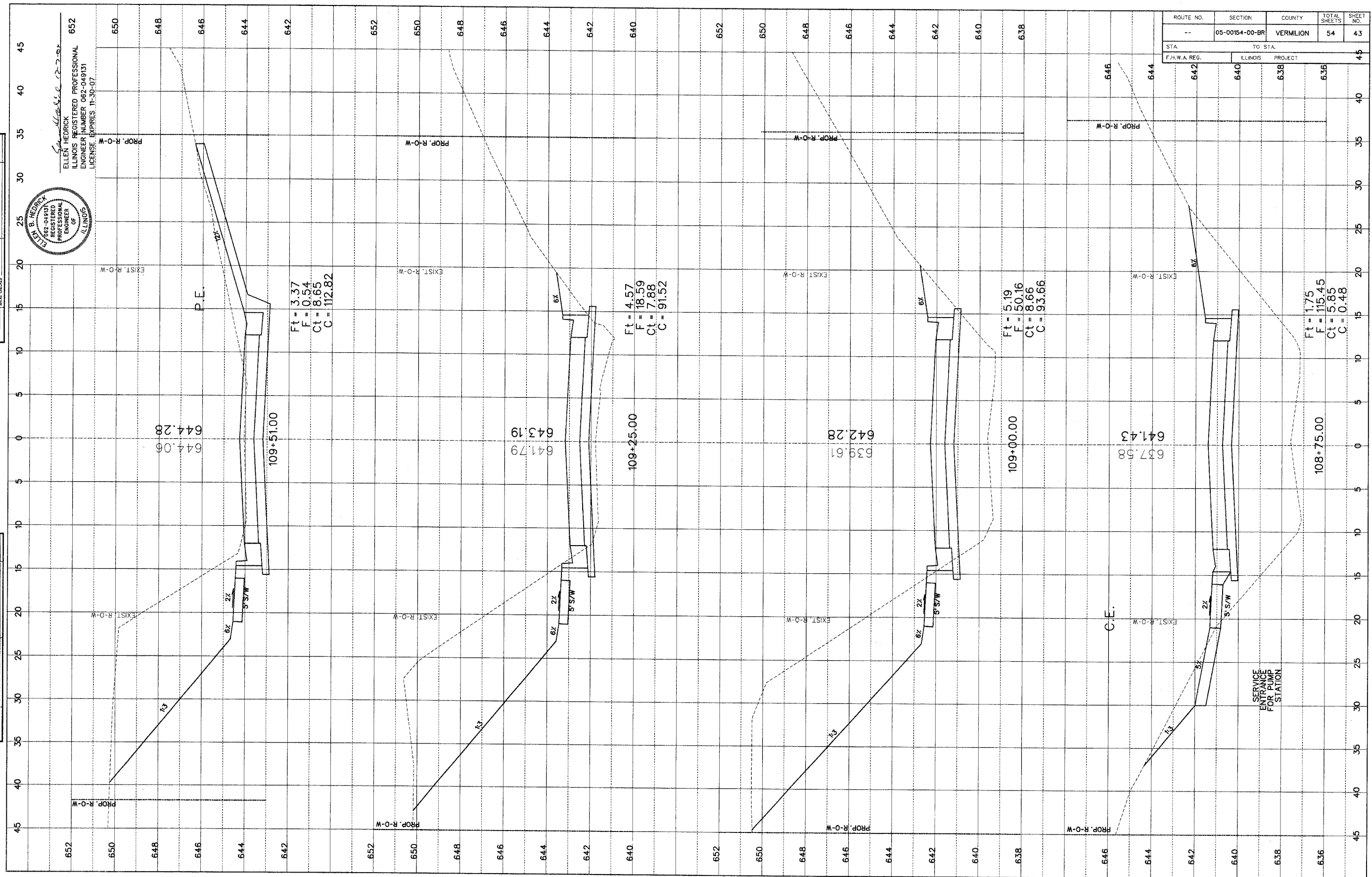


ROUTE NO.	SECTION	COUNTY	TOTAL SHEETS	SHEET NO.
--	05-00154-00-BR	VERMILION	54	43
STA.	TO STA.			
F.H.W.A. REG.	ILLINOIS PROJECT			



652
650
648
646
644
642

652
650
648
646
644
642

652
650
648
646
644
642

652
650
648
646
644
642

652
650
648
646
644
642

652
650
648
646
644
642

652
650
648
646
644
642

652
650
648
646
644
642

652
650
648
646
644
642

652
650
648
646
644
642

FINAL SURVEY
DATE: 12-2-02
BY: [Signature]
DRAWN BY: [Signature]
CHECKED BY: [Signature]

ORIGINAL SURVEY
DATE: [Blank]
BY: [Blank]
DRAWN BY: [Blank]
CHECKED BY: [Blank]

ELLEN HEDRICK
REGISTERED PROFESSIONAL ENGINEER
ILLINOIS REGISTERED PROFESSIONAL ENGINEER NUMBER 062-049131
LICENSE EXPIRES 11-30-07



...105057 Cross Section Sheets.dgn 12/6/2006 4:30:47 PM