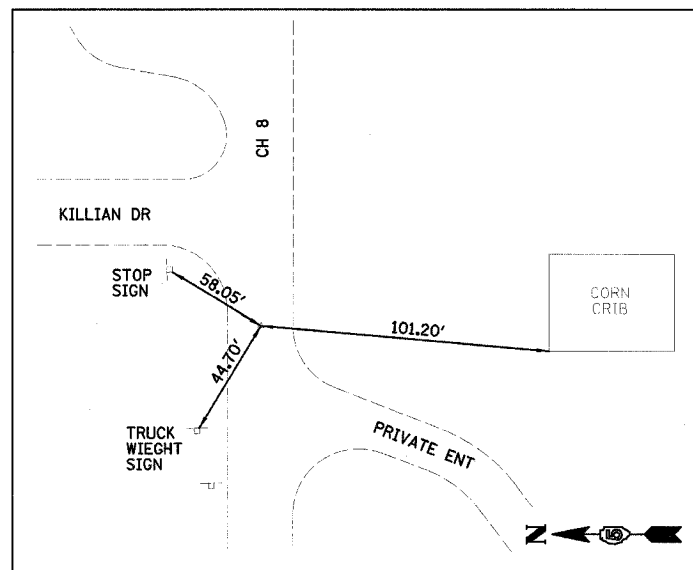
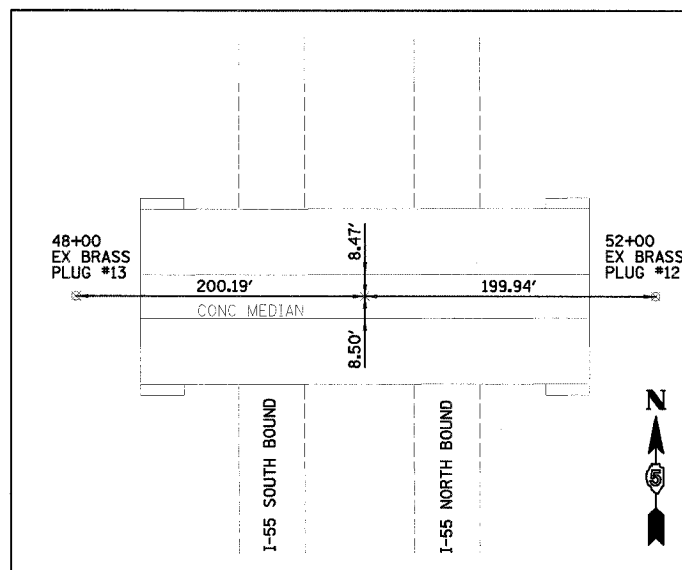


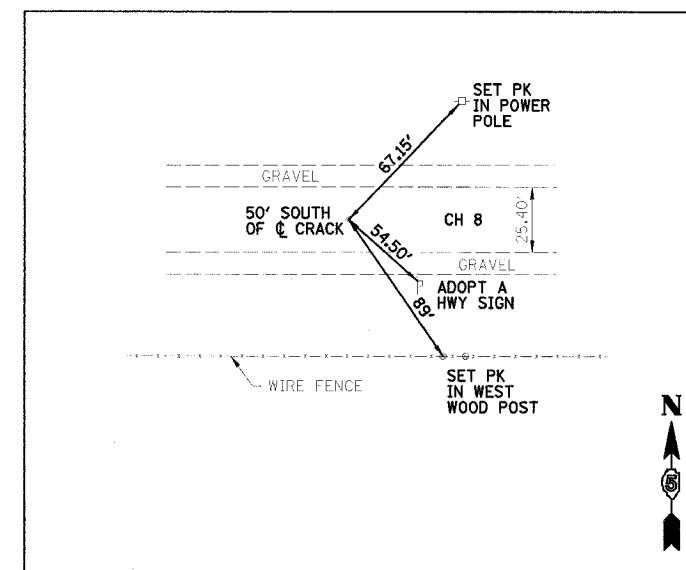
F.A.S. RTE:	SECTION	COUNTY	TOTAL SHEETS	SHEET NO.
473	05-00046-12-RP	McLEAN	32	7
STA.	TO STA.			
FED. ROAD DIST. NO.	ILLINOIS	FED. AID PROJECT		
CONTRACT NO. 91370				



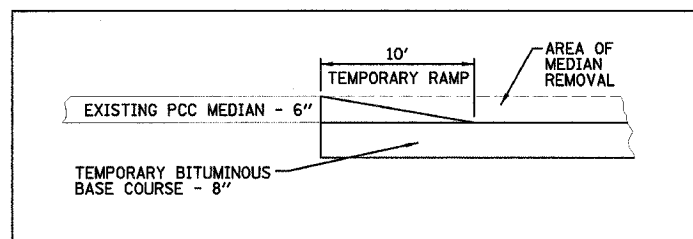
CONTROL TIE CH 8  
STA 35+00 T POT PK SET #25



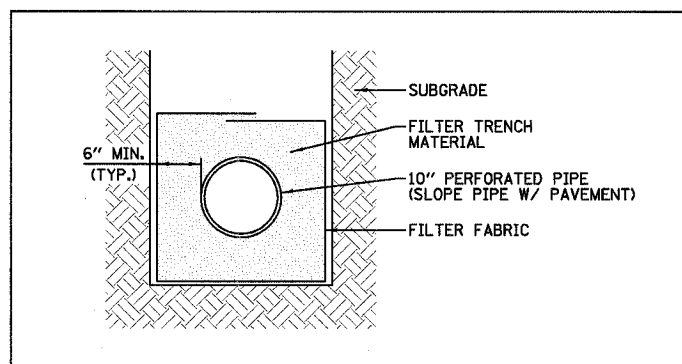
CONTROL TIE CH 8  
STA 50+00 T POT "X" CUT #24



CONTROL TIE CH 8  
STA 65+00 T POT PK SET #26



MEDIAN DETAIL (CH 8)



PIPE UNDERDRAIN 10" DETAIL

**BENCHMARKS**

- CH 8
- "□" ON N HDWL OF 5'x6' BOX CULVERT ALONG CH8 400' W OF KILLIAN DR EL=770.20 (BK 2416)
- "□" TOP OF NE CONC ABUT OF BRIDGE OVER I-55 EL=770.02 (BK 2416)
- PK NAIL IN POWER POLE ON N SIDE CH8 OPPOSITE AMOCO/MCDONALD'S ENT EL=742.58 (BK 2416)

McLEAN COUNTY, ILLINOIS  
MFT SECTION 05-00046-12-RP

CONTROL SURVEY TIES,  
BENCHMARKS AND  
MISCELLANEOUS DETAILS

DRAWN BY MAL	FILE NO. 24-7687
DATE 12/06/06	BOOK NO. 2416
CHECKED BY RGD	SHEET NO. 7 OF 32

**Farnsworth GROUP**  
3700 McGraw Drive  
Bloomington, Illinois 61704  
800.682-6422 / Fax: 309.583-1571