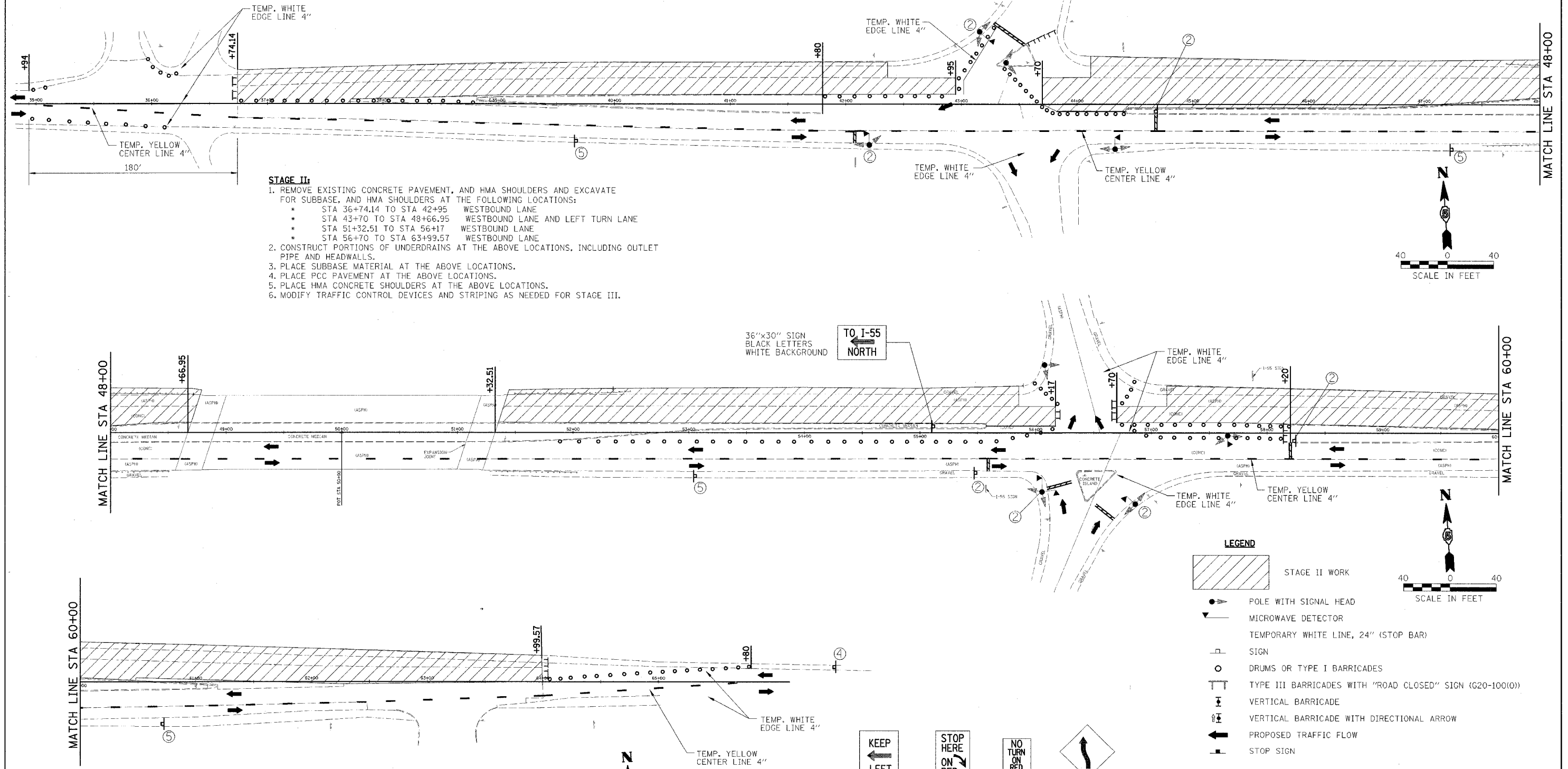


F.A.S. RTE.:	SECTION	COUNTY	TOTAL SHEETS	SHEET NO.
473	05-00046-12-RP	McLEAN	32	15
STA.	TO STA.			
FED. ROAD DIST. NO.	ILLINOIS	FED. AID PROJECT		
CONTRACT NO. 91370				

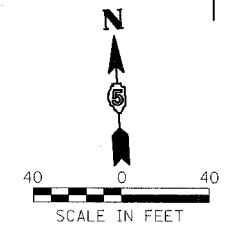
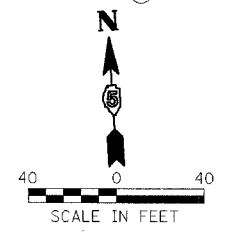
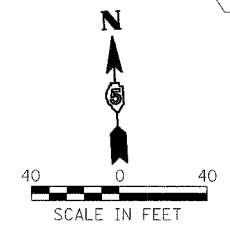


- STAGE II:**
- REMOVE EXISTING CONCRETE PAVEMENT, AND HMA SHOULDERS AND EXCAVATE FOR SUBBASE, AND HMA SHOULDERS AT THE FOLLOWING LOCATIONS:
    - STA 36+74.14 TO STA 42+95 WESTBOUND LANE
    - STA 43+70 TO STA 48+66.95 WESTBOUND LANE AND LEFT TURN LANE
    - STA 51+32.51 TO STA 56+17 WESTBOUND LANE
    - STA 56+70 TO STA 63+99.57 WESTBOUND LANE
  - CONSTRUCT PORTIONS OF UNDERDRAINS AT THE ABOVE LOCATIONS, INCLUDING OUTLET PIPE AND HEADWALLS.
  - PLACE SUBBASE MATERIAL AT THE ABOVE LOCATIONS.
  - PLACE PCC PAVEMENT AT THE ABOVE LOCATIONS.
  - PLACE HMA CONCRETE SHOULDERS AT THE ABOVE LOCATIONS.
  - MODIFY TRAFFIC CONTROL DEVICES AND STRIPING AS NEEDED FOR STAGE III.

- STAGE II GENERAL NOTES**
- TWO 11 FOOT LANES MUST BE MAINTAINED AT ALL TIMES, UNLESS LOCATED WITHIN THE ONE-WAY AREA CONTROLLED BY THE TEMPORARY SIGNALS, WHICH SHALL HAVE ONE LANE WITH A MINIMUM 12' WIDTH.
  - THE CONTRACTOR SHALL PLACE SIGNS STATING "RESTRICTED WIDTH" ON I-55 500' BEFORE EACH EXIT RAMP.
  - EXISTING SIGNS AND PAVEMENT MARKINGS CONFLICTING WITH CONSTRUCTION TRAFFIC CONTROL SHALL BE REMOVED. CONFLICTING SIGNS MAY BE COVERED INSTEAD OF REMOVED AT THE OPTION OF THE CONTRACTOR.
  - DRUM OR BARRICADE SPACING SHALL BE 8 FOOT CENTER-TO-CENTER AROUND LANE CLOSURES AND IN TAPERS AND 25 FOOT IN TANGENT SECTIONS, UNLESS OTHERWISE SHOWN.

- LEGEND**
- STAGE II WORK
  - POLE WITH SIGNAL HEAD
  - MICROWAVE DETECTOR
  - TEMPORARY WHITE LINE, 24" (STOP BAR)
  - SIGN
  - DRUMS OR TYPE I BARRICADES
  - TYPE III BARRICADES WITH "ROAD CLOSED" SIGN (G20-100(O))
  - VERTICAL BARRICADE
  - VERTICAL BARRICADE WITH DIRECTIONAL ARROW
  - PROPOSED TRAFFIC FLOW
  - STOP SIGN

- KEEP LEFT
  - KEEP RIGHT
  - STOP HERE ON RED
  - STOP HERE ON RED
  - NO TURN ON RED
  - NO TURN ON RED
  - W1-4-48
  - W6-3-48
- R4-7A-3648    R10-6A-3036    R4-8-3648    W1-4-48    W6-3-48
- ①    ②    ③    ④    ⑤
- L OR R



McLEAN COUNTY, ILLINOIS  
MFT SECTION 05-00046-12-RP

**STAGE CONSTRUCTION PLAN  
STAGE II**

DRAWN BY MAL		FILE NO. 24-7687
DATE 12/06/06		BOOK NO. 2416
CHECKED BY RGD		SHEET NO. 15 OF 32
2700 McGraw Drive Bloomington, Illinois 61704 309.868-6635 / Fax 309.898-1871		