

F.A.U. RTE.	SECTION	COUNTY	TOTAL SHEETS	SHEET NO.
7902	***	CHRISTIAN	67	1

03-00055-00-FP

**INDEX OF SHEETS**

SHEET NO.	DESCRIPTION
1.	COVER SHEET
2.	SUMMARY OF QUANTITIES AND GENERAL NOTES
3. - 4.	SCHEDULE OF QUANTITIES
5.	HORIZONTAL CONTROL
6. - 10.	TYPICAL SECTIONS
11. - 17.	PLAN AND PROFILE
18. - 25.	STAGE CONSTRUCTION
26.	ENTRANCE DETAILS
27.	STRIPING PLAN
28.	EROSION CONTROL PLAN
29. - 67.	CROSS SECTIONS

**STANDARDS**

SEE SHEET NO. 4

**UTILITIES**

**WATER**

CITY OF TAYLORVILLE  
2222 LINCOLN TRAIL  
TAYLORVILLE, IL 62568

**GAS & ELECTRIC**

AMEREN CIPS  
420 N 2400E ROAD  
PANA, IL 62557

**TELEPHONE**

ILLINOIS CONSOLIDATED

**SANITARY SEWER**

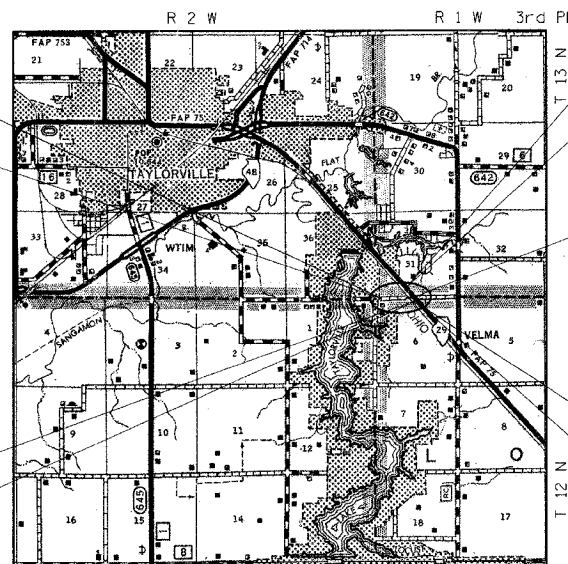
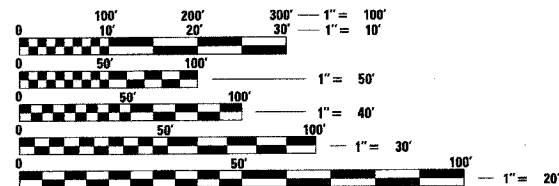
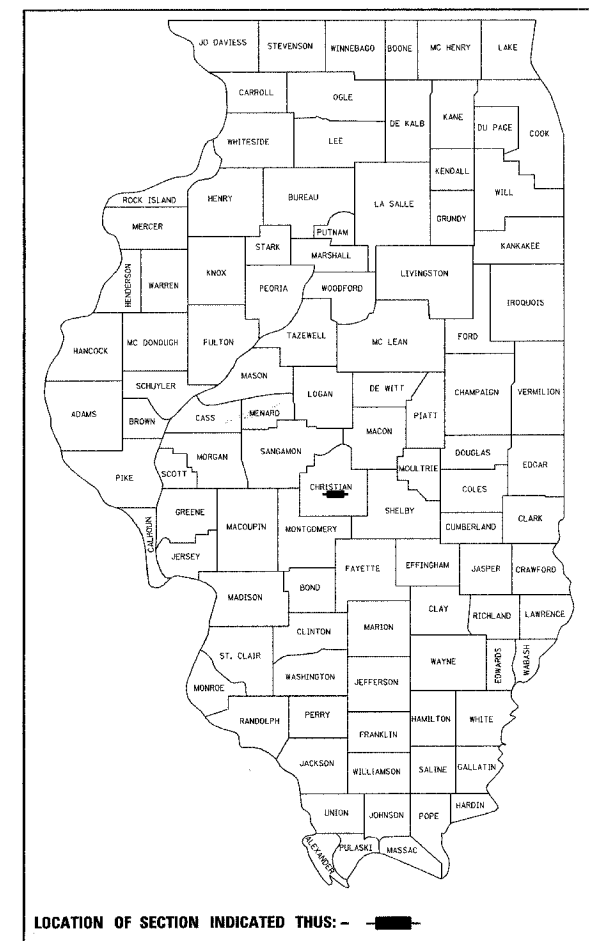
CITY OF TAYLORVILLE  
205 N. CHEROKEE STREET  
TAYLORVILLE, IL 62568

STATE OF ILLINOIS  
DEPARTMENT OF TRANSPORTATION  
DIVISION OF HIGHWAYS

**PROPOSED  
HIGHWAY PLANS**

**SURFACE TRANSPORTATION / URBAN PROGRAM**  
**FAU 7902 (EAST SUNSET DRIVE) / FAP 75 (IL RTE 29)**  
**SECTION 03-00055-00-FP**  
**PROJECT M-5067(15)**  
**CHRISTIAN COUNTY**  
**CITY OF TAYLORVILLE**  
**JOB NO. C-96-210-04**

PLAN & PROFILE	HORIZONTAL	0 10 30 50 100 FT.
	VERTICAL	0 5 10 FT.
CROSS SECTIONS	HORIZONTAL	0 5 10 FT.
	VERTICAL	0 5 10 FT.



BEGIN EAST SUNSET DRIVE IMPROVEMENTS  
STA. 21+93.40

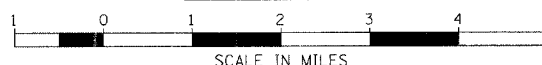
BEGIN IL RTE 29 IMPROVEMENTS  
STA. 154+00.00

STA. 46+53.69 (EAST SUNSET DRIVE) =  
STA. 164+16.10 (IL RTE 29)

END EAST SUNSET DRIVE IMPROVEMENTS  
STA. 48+83.58 (TR 205B)

END IL RTE 29 IMPROVEMENTS  
STA. 174+00.00

LOCATION MAP



EAST SUNSET DRIVE: STA. 21+93.40 TO STA. 46+29.32 = 2,435.92 FEET  
TR-205B: STA. 46+65.87 TO STA. 48+83.58 = 217.71 FEET  
IL RTE 29: STA. 154+00.00 TO STA. 174+00.00 = 2,000.00 FEET  
NET LENGTH OF PROJECT = 4,653.63 FEET = 0.881 MILES



SIGNED: *William C. Bott* DATE: 11/03/06

EXPIRES: 11-30-07

APPROVED	<i>November 3, 2006</i>	2006
	<i>Frank O. Markon</i>	
	MAYOR, CITY OF TAYLORVILLE	
PASSED	<i>NOVEMBER 9, 2006</i>	20 06
	<i>John F. ...</i>	
	DISTRICT SIX ENGINEER OF LOCAL ROADS & STREETS	
PASSED	<i>NOVEMBER 9, 2006</i>	20 06
	<i>John ...</i>	
	DISTRICT SIX ENGINEER OF CONSTRUCTION	
Releasing For Bid Based on Limited Review	<i>NOVEMBER 9, 2006</i>	20 06
	<i>Christine M. Reed</i>	
	DEPUTY DIRECTOR OF HIGHWAYS, TRF	
	REGION FOUR ENGINEER	
	STATE OF ILLINOIS	
	DEPARTMENT OF TRANSPORTATION	

**PRINTED BY THE AUTHORITY OF THE STATE OF ILLINOIS**

FULL SIZE PLANS HAVE BEEN PREPARED USING STANDARD ENGINEERING SCALES. REDUCED SIZED PLANS WILL NOT CONFORM TO STANDARD SCALES. IN MAKING MEASUREMENTS ON REDUCED PLANS, THE ABOVE SCALES MAY BE USED.

J.U.L.I.E.  
JOINT UTILITY LOCATION INFORMATION FOR EXCAVATION  
1-800-892-0123

ROADWAY CLASSIFICATION:  
EAST SUNSET DRIVE: LOCAL COLLECTOR: ADT(2017) 1,160  
IL RTE 29: PRINCIPAL ARTERIAL: ADT(2017) 6,600

**CONTRACT NO. 93426**

PLANS PREPARED BY:

REVISION	DATE	BY	COMPUTER FILE NO.
1007 REVIEW	06/29/06	GSJ	02159C0V
			PROJECT: 02159
			06/09/06-GSJ

**GREENE & BRADFORD, INC.**  
CONSULTING ENGINEERS  
1000 W. ...  
PROFESSIONAL DESIGN FIRM NO. 02159  
1011 192-8814, 4021 781-2421, 1-800-892-0123

**CITY OF TAYLORVILLE / EAST SUNSET DRIVE**

FILE NAME = J:\02659\DRAWINGS\02659C0V.dwg  
PLOT SCALE = 50.0000 DWS / DWG = XES-8850.ENG.plt  
PLOT DATE = 10/24/06 AM  
OPERATOR = cgregm