

F.A.U. RTE.	SECTION	COUNTY	TOTAL SHEETS	SHEET NO.
7902	***	CHRISTIAN	67	12
STA. 34+00.00 TO STA. 49+00.00		ILLINOIS FED. AID PROJECT		

DESIGN	INT.	DATE	REASON

PLAN	DATE	BY

PLOTS & CHECKS	INT.	DATE	NO.	REASON

PROFILE	DATE	BY

CHECKS	INT.	DATE	REASON

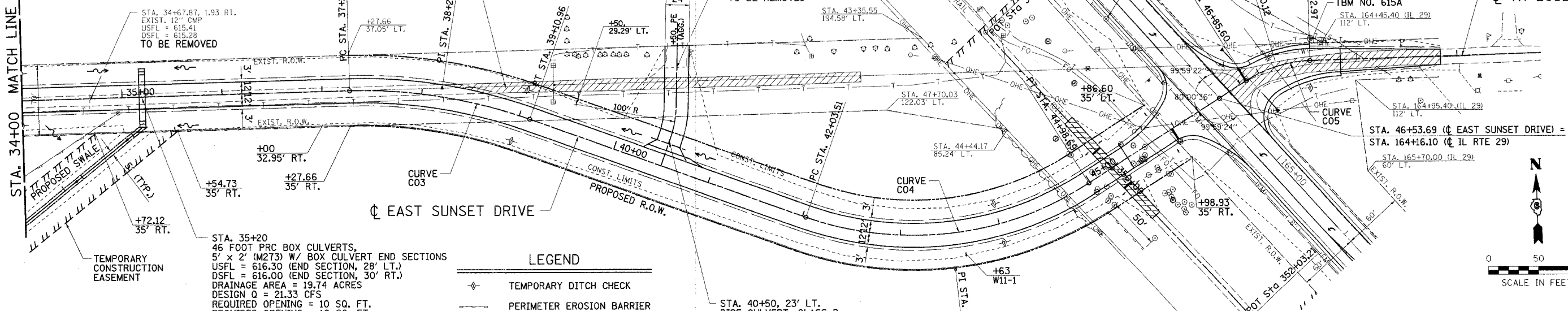
FILE NAME	SCALE	DRY	PLOTTED

CURVE C03
 P.I. STA. 38+20.35
 $\Delta = 21^\circ 00' 16''$ (RT)
 $D = 11^\circ 27' 33''$
 $R = 500.00'$
 $T = 92.69'$
 $L = 183.30'$
 $E = 8.52'$
 P.C. STA. 37+27.66
 P.T. STA. 39+10.96
 S.E. ATTAINED: STA. 36+24.00 TO STA. 37+60.00
 S.E. REMOVED: STA. 38+78.00 TO STA. 40+14.00
 S.E. RATE = 3.90%

CURVE C04
 P.I. STA. 43+62.16
 $\Delta = 52^\circ 02' 20''$ (LT)
 $D = 17^\circ 37' 46''$
 $R = 325.00'$
 $T = 158.65'$
 $L = 295.18'$
 $E = 36.66'$
 P.C. STA. 42+03.51
 P.T. STA. 44+98.69
 S.E. ATTAINED: STA. 41+01.00 TO STA. 42+37.00
 S.E. REMOVED: STA. 44+09.00 TO STA. 45+45.00
 S.E. RATE = 4.00%

CURVE C05
 P.I. STA. 47+20.12
 $\Delta = 30^\circ 53' 00''$ (RT)
 $D = 45^\circ 50' 12''$
 $R = 125.00'$
 $T = 34.53'$
 $L = 67.38'$
 $E = 4.68'$
 P.C. STA. 46+85.60
 P.T. STA. 47+52.97

STA. 34+00 MATCH LINE



OLD ROADBED SHALL BE GRADED TO DRAIN AND SEED AS DIRECTED BY THE ENGINEER (COST OF GRADING INCIDENTAL TO EARTH EXCAVATION)

STA. 35+20
 46 FOOT PRC BOX CULVERTS,
 5' x 2' (M273) W/ BOX CULVERT END SECTIONS
 USFL = 616.30 (END SECTION, 28' LT.)
 DSFL = 616.00 (END SECTION, 30' RT.)
 DRAINAGE AREA = 19.74 ACRES
 DESIGN Q = 21.33 CFS
 REQUIRED OPENING = 10 SQ. FT.
 PROVIDED OPENING = 10 SQ. FT.

LEGEND

- TEMPORARY DITCH CHECK
- PERIMETER EROSION BARRIER
- TEMP. CONSTRUCTION EASEMENT
- PAVEMENT REMOVAL

TBM NO. 615A: STA. 47+55.11 (TR 205B), 19' LT. WEST CAP BOLT ON FIRE HYDRANT ELEV. 621.51

REVISION	DATE	BY
IDOT REVIEW	6/12/06	GSJ

GREENE & BRADFORD, INC.
 OF SPRINGFIELD
 PROFESSIONAL ENGINEERS
 LICENSE NO. 001-001-001-001
 REGISTERED PROFESSIONAL ENGINEERS
 STATE OF ILLINOIS

COMPUTER FILE NO. PLAN159A-02
 PROJECT: 02/59
 06/12/06-GSJ

