

F.A.U. RTE.	SECTION	COUNTY	TOTAL SHEETS	SHEET NO.
7902	...	CHRISTIAN	67	25
STA. 34+00.00		TO STA. 49+00.00		
FED. ROAD DIST. NO.		ILLINOIS FED. AID PROJECT		
*** 03-00055-00-FP				

DESIGN	INT. DATE	REASON

DATE	BY	REASON

PLOTS & CHECKS	INT. DATE	NO.	REASON

DATE	BY	REASON

DATE	BY	REASON

CHECKS	INT. DATE	REASON

IDOTPP-50 - 150 8/07/00

CURVE C03
 P.I. STA. 38+20.35
 $\Delta = 21^\circ 00' 16''$ (RT)
 $D = 11^\circ 27' 33''$
 $R = 500.00'$
 $T = 92.69'$
 $L = 183.30'$
 $E = 8.52'$
 P.C. STA. 37+27.66
 P.T. STA. 39+10.96
 S.E. ATTAINED: STA. 36+24.00 TO STA. 37+60.00
 S.E. REMOVED: STA. 38+78.00 TO STA. 40+14.00
 S.E. RATE = 3.90%

CURVE C04
 P.I. STA. 43+62.16
 $\Delta = 52^\circ 02' 20''$ (LT)
 $D = 17^\circ 37' 46''$
 $R = 325.00'$
 $T = 158.65'$
 $L = 295.18'$
 $E = 36.66'$
 P.C. STA. 42+03.51
 P.T. STA. 44+98.69
 S.E. ATTAINED: STA. 41+01.00 TO STA. 42+37.00
 S.E. REMOVED: STA. 44+09.00 TO STA. 45+45.00
 S.E. RATE = 4.00%

CURVE C05
 P.I. STA. 47+20.12
 $\Delta = 30^\circ 53' 00''$ (RT)
 $D = 45^\circ 50' 12''$
 $R = 125.00'$
 $T = 34.53'$
 $L = 67.38'$
 $E = 4.68'$
 P.C. STA. 46+85.60
 P.T. STA. 47+52.97

STA. 35+20
 46 FOOT PRC BOX CULVERTS,
 5' x 2' (M273) W/ PC END SECTIONS
 USFL = 616.30 (END SECTION, 28' LT.)
 DSFL = 616.00 (END SECTION, 30' RT.)
 DRAINAGE AREA = 19.74 ACRES
 DESIGN Q = 21.33 CFS
 REQUIRED OPENING = 10 SQ. FT.
 PROVIDED OPENING = 10 SQ. FT.

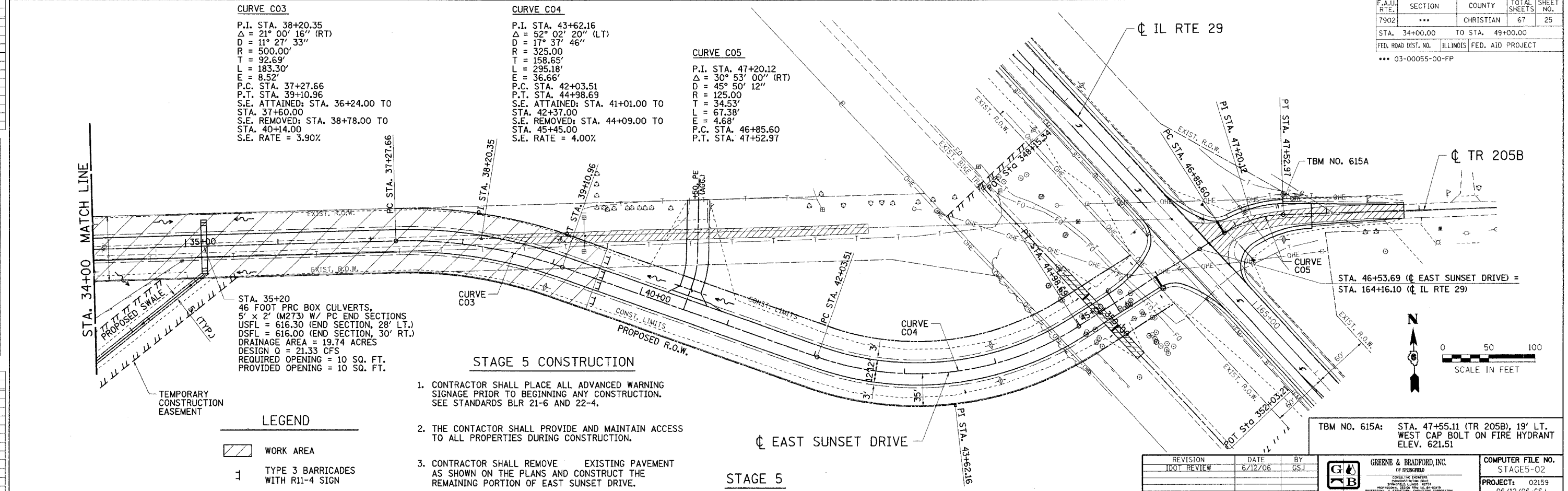
STAGE 5 CONSTRUCTION

1. CONTRACTOR SHALL PLACE ALL ADVANCED WARNING SIGNAGE PRIOR TO BEGINNING ANY CONSTRUCTION. SEE STANDARDS BLR 21-6 AND 22-4.
2. THE CONTACTOR SHALL PROVIDE AND MAINTAIN ACCESS TO ALL PROPERTIES DURING CONSTRUCTION.
3. CONTRACTOR SHALL REMOVE EXISTING PAVEMENT AS SHOWN ON THE PLANS AND CONSTRUCT THE REMAINING PORTION OF EAST SUNSET DRIVE.

LEGEND

WORK AREA

TYPE 3 BARRICADES WITH R11-4 SIGN

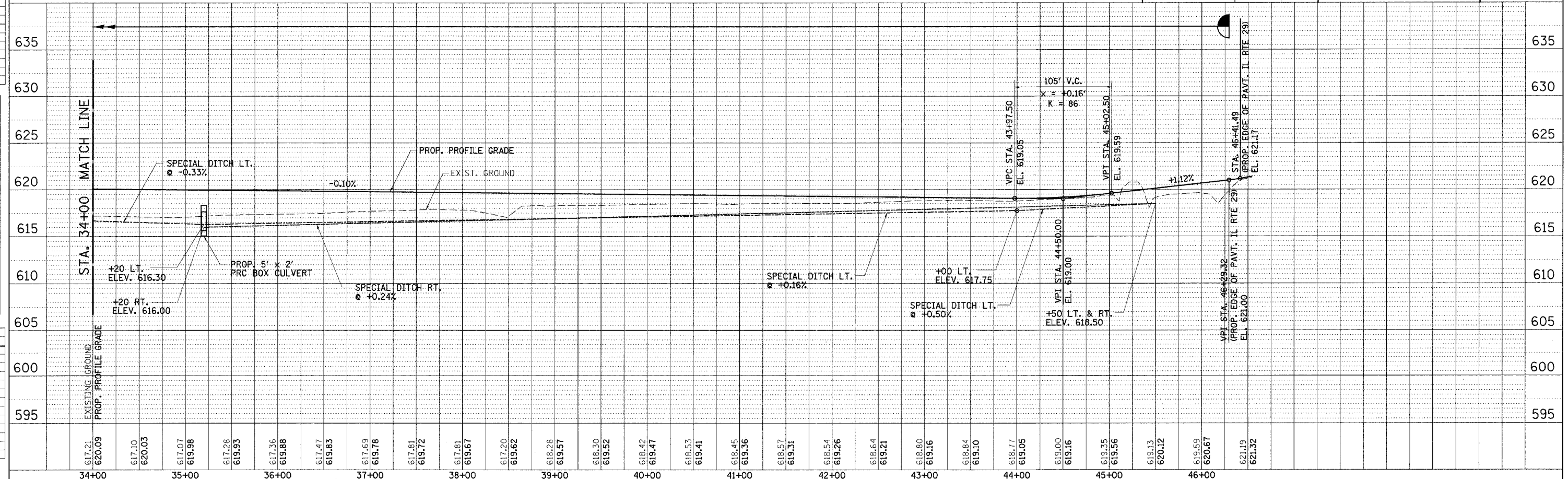


TBM NO. 615A: STA. 47+55.11 (TR 205B), 19' LT. WEST CAP BOLT ON FIRE HYDRANT ELEV. 621.51

REVISION	DATE	BY
100T REVIEW	6/12/06	GSJ

GREENE & BRADFORD, INC.
 CIVIL ENGINEERS
 1001 W. 10TH ST., SUITE 100
 TAYLORVILLE, IL 62458
 (618) 242-1111 FAX (618) 242-1112
 www.greenegb.com

COMPUTER FILE NO. STAGE5-02
 PROJECT: 02159
 06/12/06-GSJ



STAGE 5 TRAFFIC CONTROL - CITY OF TAYLORVILLE / EAST SUNSET DRIVE