

T.R.	SECTION	COUNTY	TOTAL SHEETS	SHEET NO.
117	04-04113-00-BR	WABASH	13	2
FED. ROAD DIST. NO. 7 ILLINOIS		FED. AID PROJECT		323 W. 3RD ST. P.O. BOX 160 MT. CARMEL, IL 62863
PROJECT # BR05-185(20)		CONTRACT # 95477		PHONE: (618)-262-9651 FAX: (618)-263-3327
JOB # C-97-130-06		FORDICE CREEK TRIBUTARY		405 W. STATE ST SUITE 1 PRINCETON, IN 47670
LEC JOB # H031018WB				PHONE: (812)-385-7611 FAX: (812)-385-2812

**GENERAL NOTES:**

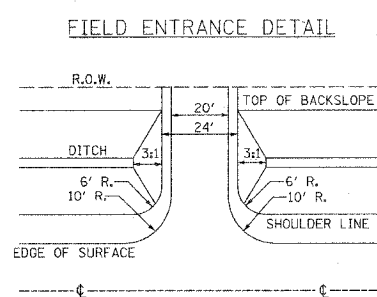
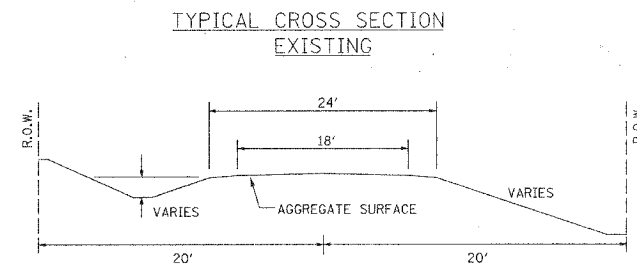
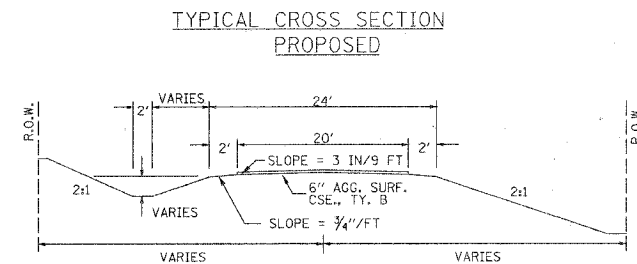
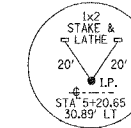
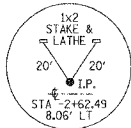
THIS SECTION SHALL BE CONSTRUCTED IN ACCORDANCE WITH THE PLANS, SPECIAL PROVISIONS AND "STANDARD SPECIFICATIONS FOR ROAD AND BRIDGE CONSTRUCTION", ADOPTED JANUARY 1, 2007.

THE WORK INVOLVED ON THIS SECTION CONSISTS OF THE REMOVAL OF THE EXISTING STRUCTURE, THE CONSTRUCTION OF A 60 FOOT LONG SINGLE SPAN PRECAST, PRESTRESSED CONCRETE DECK BEAM BRIDGE, EARTH APPROACHES, AGGREGATE SURFACE COURSE AND OTHER MISCELLANEOUS ITEMS NECESSARY TO COMPLETE THIS SECTION.

ALL ELEVATIONS ARE BASED ON U.S.G.S. MEAN SEA LEVEL DATUM.

IT SHALL BE THE CONTRACTOR'S RESPONSIBILITY TO CONTACT ALL THE UTILITIES, AFFECTING THE PROJECT, PRIOR TO CONSTRUCTION.

NOTE: CONSTRUCTION TRANSITIONS  
STA. 0+50 TO STA 1+00  
STA 7+65 TO STA 8+15  
ALL QUANTITIES ARE INCLUDED IN THE PROPOSAL



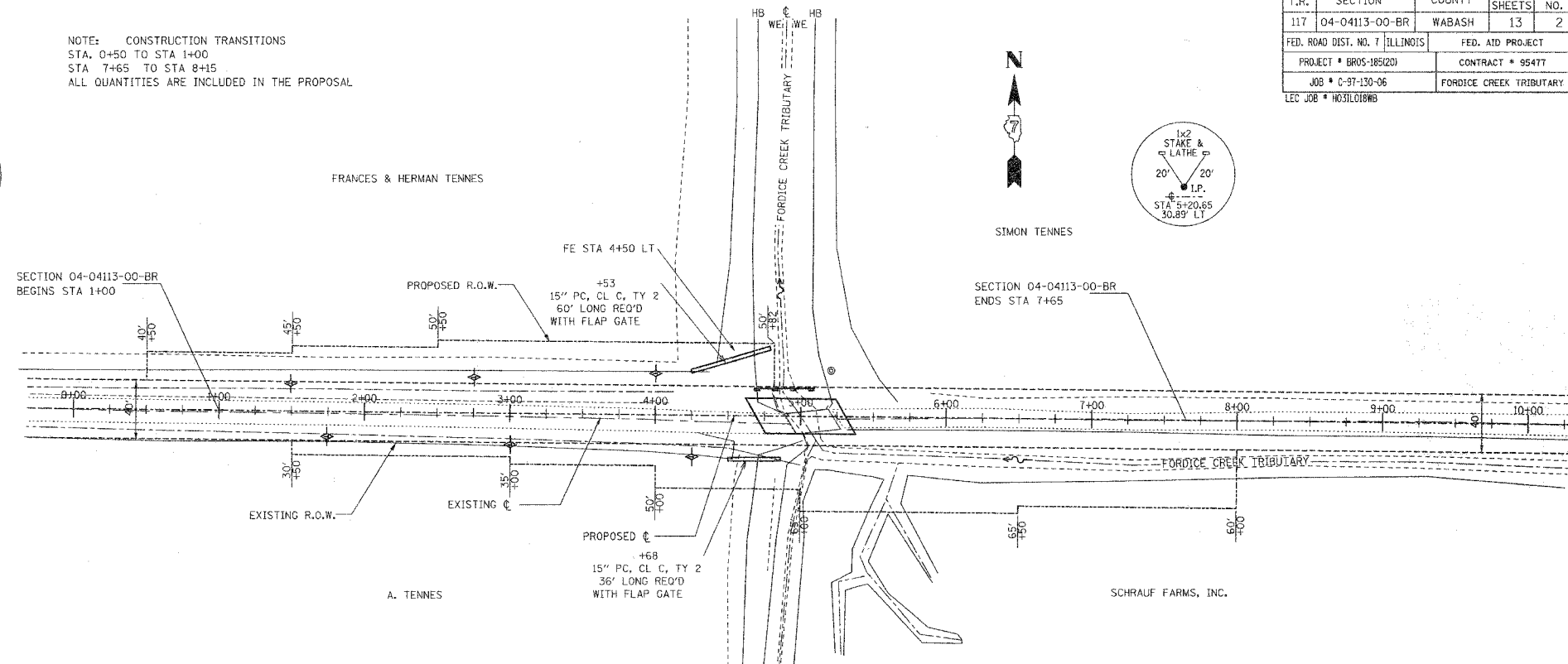
NOTE: CONSTRUCT SPECIAL DITCH  
STA 1+00 TO STA 4+25 LT  
STA 1+00 TO STA 4+50 RT

NOTE: CONSTRUCT STONE RIPRAP DITCH  
STA 5+02 RT - 4' (1.51 TON/LIN FT)  
STA 5+60 RT - 7' (1.56 TON/LIN FT)

17.0 TON STONE RIPRAP DITCH ALLOWED IN PROPOSAL.

SEE SHEET NO. 14 FOR STONE RIPRAP DITCH DETAILS.

UTILITIES:  
J.U.L.I.E. 1-800-892-0123



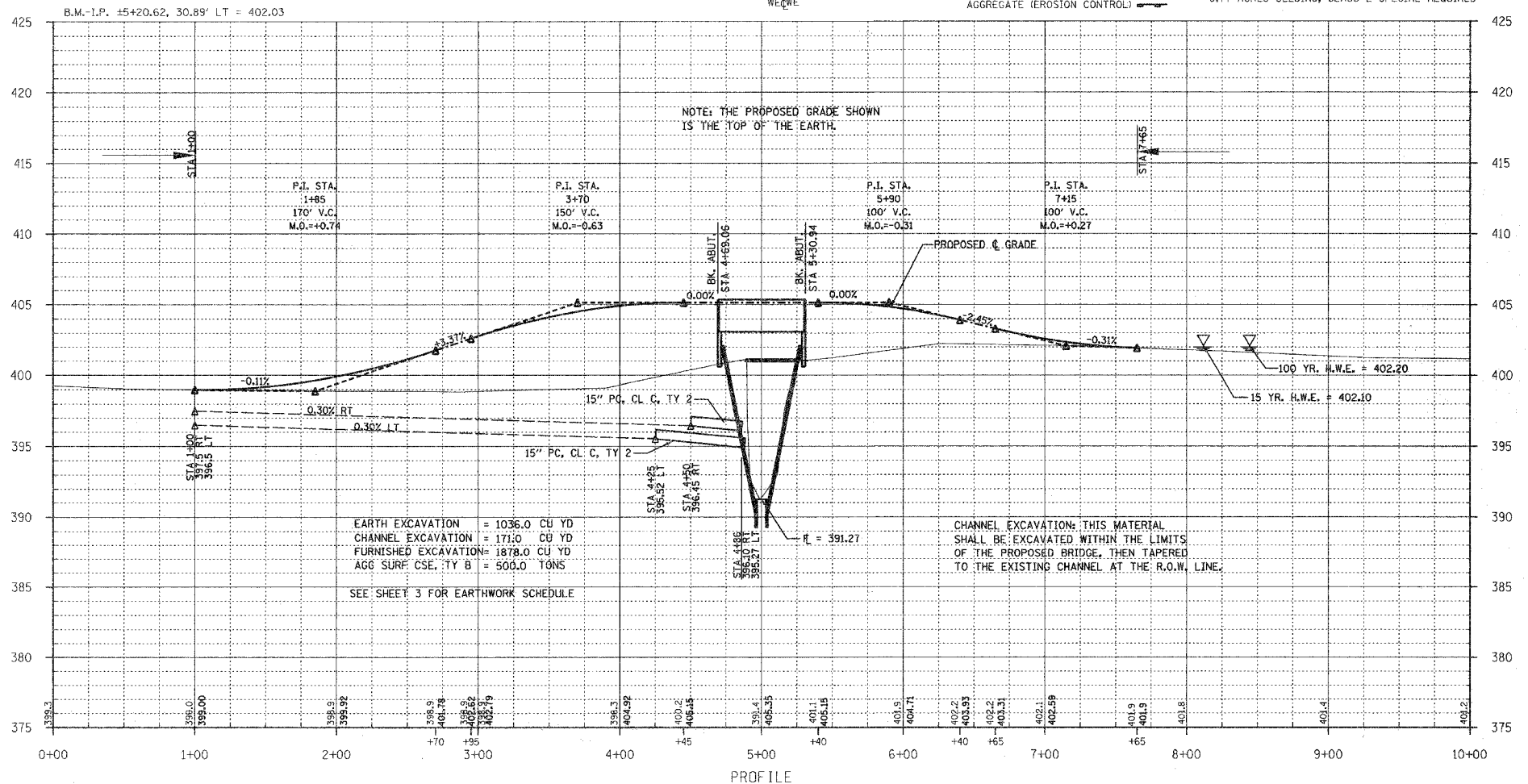
EXISTING BRIDGE STA 5+06.35; STRUCTURE NUMBER: 093-3053  
A 30' LONG BRIDGE HAVING A 6" CONCRETE DECK AND 5 1/2" CURBS ON 5-5 1/4" X 12" I-BEAMS, 2-3" X 12" C-CHANNEL BEAMS WITH CONCRETE MIDWALLS AND WINGS.

PROPOSED STRUCTURE: NO. 093-3128, STA 5+00,  
A 60' LONG SINGLE SPAN P.P.C.D.B. BRIDGE WITH 27" DEPTH BEAMS, SPILL THROUGH TYPE ABUTMENTS, 24' WIDTH, 30° RT FWD SKEW.

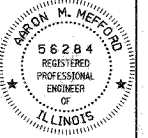
NOTE: FILL NEXT TO BRIDGE TO BE AGGREGATE SURFACE COURSE

TEMPORARY DITCH CHECKS -  
AGGREGATE (EROSION CONTROL)

0.13 ACRES TREE REMOVAL ACRES  
0.77 ACRES SEEDING, CLASS 2 SPECIAL REQUIRED



PROFESSIONAL DESIGN FIRM  
LAND SURVEY & PROFESSIONAL ENGINEERING CORPORATION



AARON M. MEFFORD  
NAME  
SIGNATURE  
DATE: 12-29-06  
11-30-07 EXPIRES

TOWNSHIP ROUTE 117  
FORDICE CREEK TRIBUTARY  
WABASH COUNTY, ILLINOIS

SHEET TITLE:

PLAN & PROFILE

SCALE:	VARIES
BY:	AMM
DATE:	09/06/06
REV:	02/06/06

2 OF 13 SHEETS

SHEET NO. 2