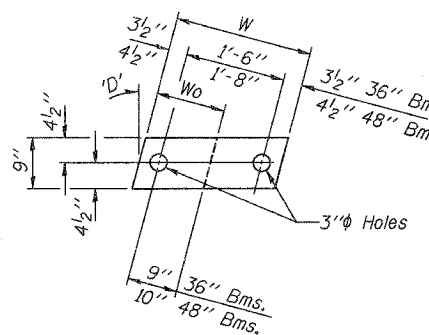
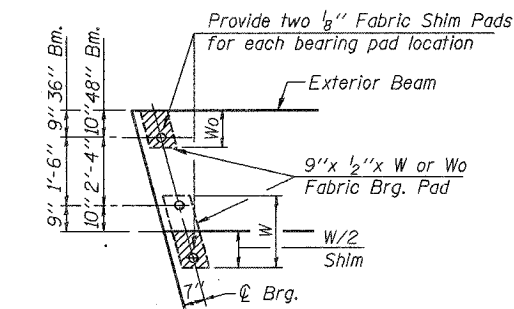
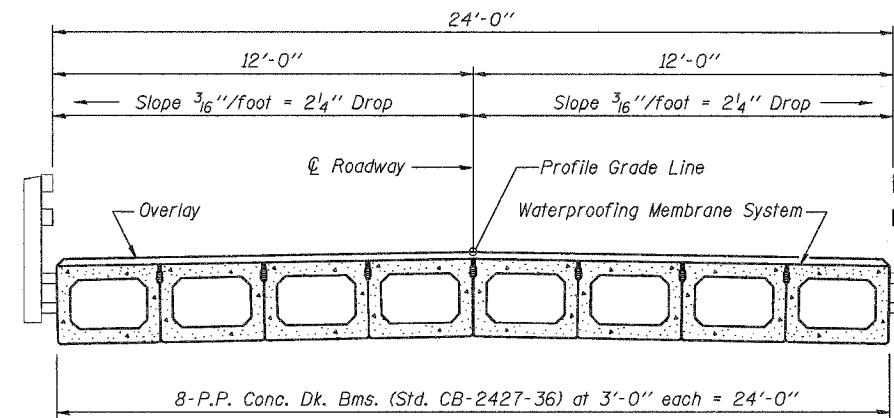


TYPICAL ELEVATIONS

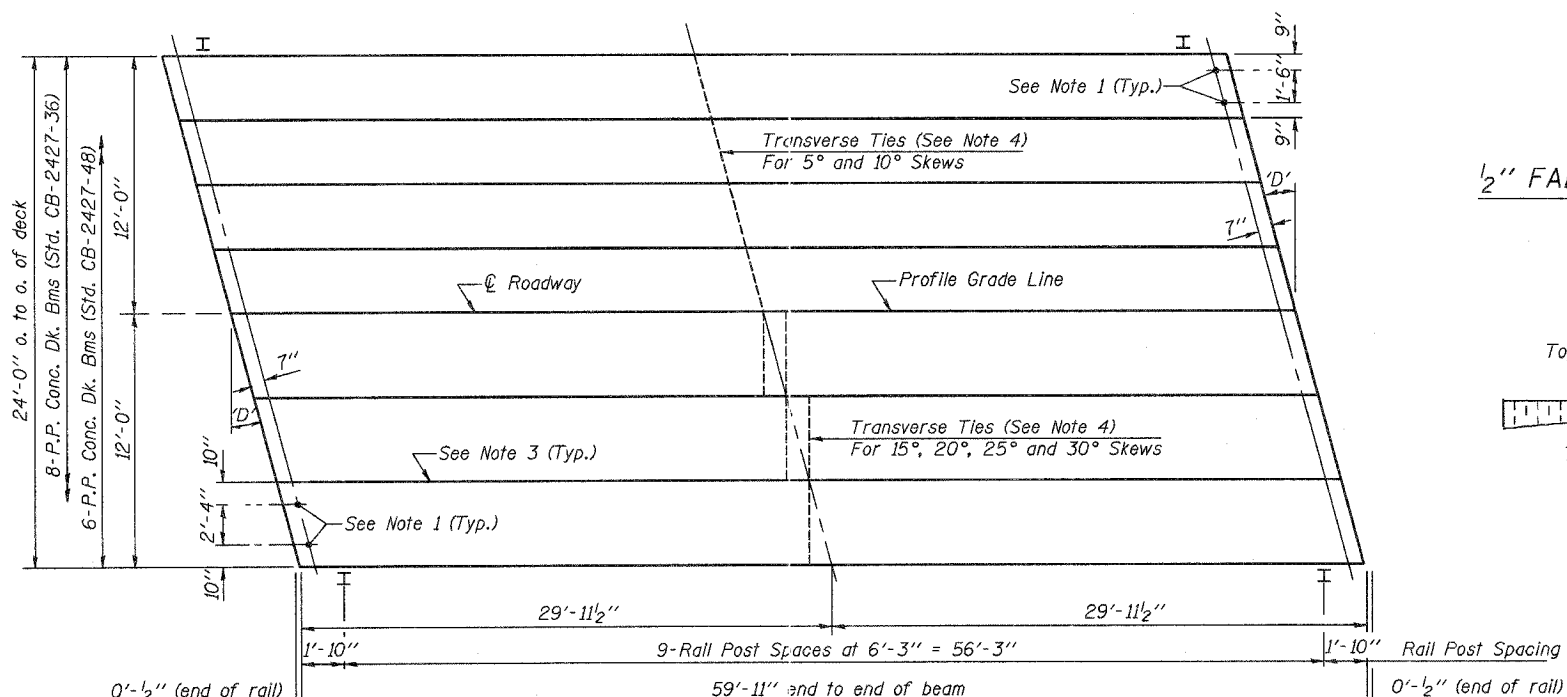
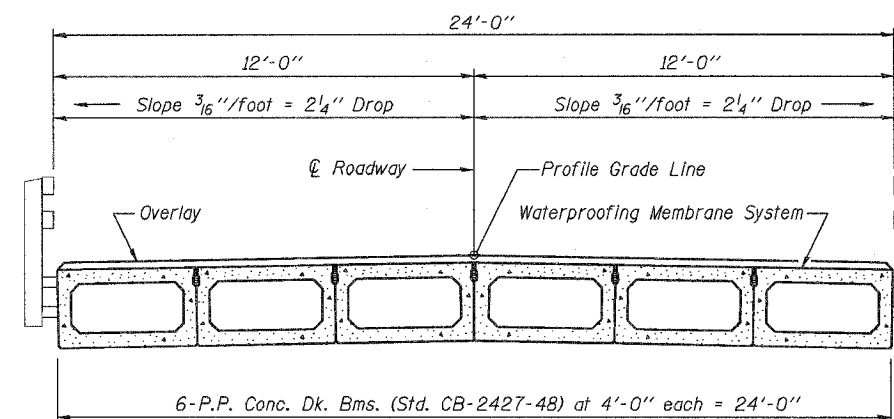


Beam	W	Wo
36"	2'-1"	1'-0 1/2"
48"	2'-5"	1'-2 1/2"

1/2" FABRIC BRG. PAD DETAILS

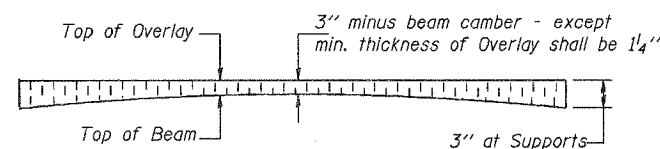


CROSS SECTION



PLAN

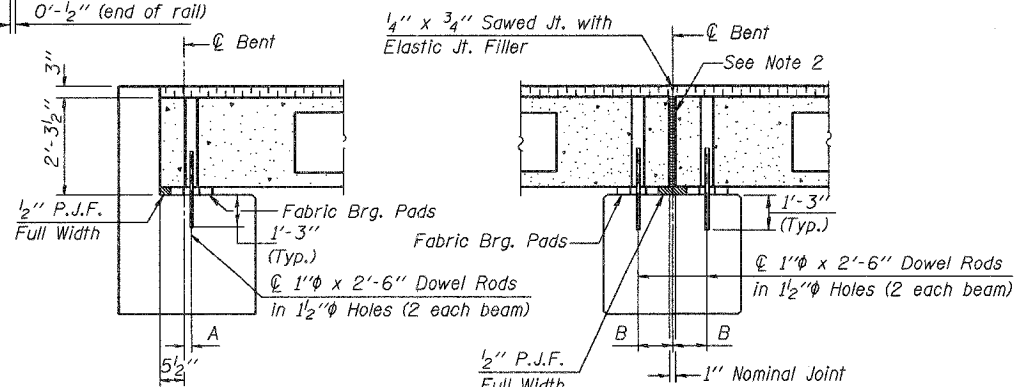
('D' = Designated Skew Angle)



PROFILE OF OVERLAY

DIMENSIONS 'A' AND 'B'

'D'	5°	10°	15°	20°	25°	30°
A	1 1/2"	1 5/8"	1 3/4"	1 7/8"	2 1/4"	2 5/8"
B	7 1/2"	7 5/8"	7 3/4"	8"	8 1/4"	8 5/8"



SECTION AT ABUTS.  
(Along centerline Beams)

SECTION AT PIERS  
(Along centerline Beams)

NOTES

1. After beams have been erected, holes shall be drilled into substructure and anchor dowels placed. Dowel holes shall be filled with non-shrink grout to top of beam and allowed to cure min. 24 hrs. prior to grouting the shear keys.
2. Nominal 1" joint at centerline Pier shall be filled with non-shrink grout.
3. Longitudinal keys shall be grouted.
4. The 1" phi rods in the transverse tie assembly shall be tightened to a snug fit and the threads set. Pockets that receive transverse tie bar outside shall be filled with grout after transverse tie assembly is in place.

QUANTITIES FOR ONE SPAN

P.P. Conc. Dk. Bm. 27" Dp.	1440 Sq. Ft.
Steel Railing	120 Ft.
Waterproofing Membrane System	160.0 Sq. Yds.
Portland Cement Mortar	420 Ft. 36"
Fairing Course	300 Ft. 48"

Note: Quantity of overlay for one span = 18.0 Tons

P.P.C. DECK BEAM  
SUPERSTRUCTURE

24' RDWY. 27" BMS. 60' SPAN RIGHT

STANDARD CS-2427-60R

Illinois Department of Transportation  
 PASSED APRIL 4, 2005  
 Thomas J. Romagosa  
 Engineer of Bridge Design  
 APPROVED APRIL 4, 2005  
 Ralph E. Anderson  
 Engineer of Bridges and Structures