

T.R.	SECTION	COUNTY	TOTAL SHEETS	SHEET NO.	323 W. 3RD ST. P.O. BOX 160 MT. CARMEL, IL 62863 PHONE: (618)-262-8651 FAX: (618)-263-3327
117	04-04113-00-BR	WABASH	13	13	
FED. ROAD DIST. NO. 7		ILLINOIS	FED. AID PROJECT		
PROJECT # BR05-185(20)		CONTRACT # 95477			
JOB # C-97-130-06		FORDICE CREEK TRIBUTARY			

405 W. STATE ST  
SUITE 1  
PRINCETON, IN  
47670  
PHONE:  
(812)-386-7611  
FAX:  
(812)-385-2812



PROFESSIONAL DESIGN FIRM  
LAND SURVEY & PROFESSIONAL ENGINEERING CORPORATION  
184-000887  
(62-032435)(35-002769)



AARON M. MEFFORD  
NAME  
*[Signature]*  
SIGNATURE  
5-07-06  
DATE  
11-30-07  
EXPIRES

TOWNSHIP ROUTE 117  
FORDICE CREEK TRIBUTARY  
WABASH COUNTY, ILLINOIS

SHEET TITLE:

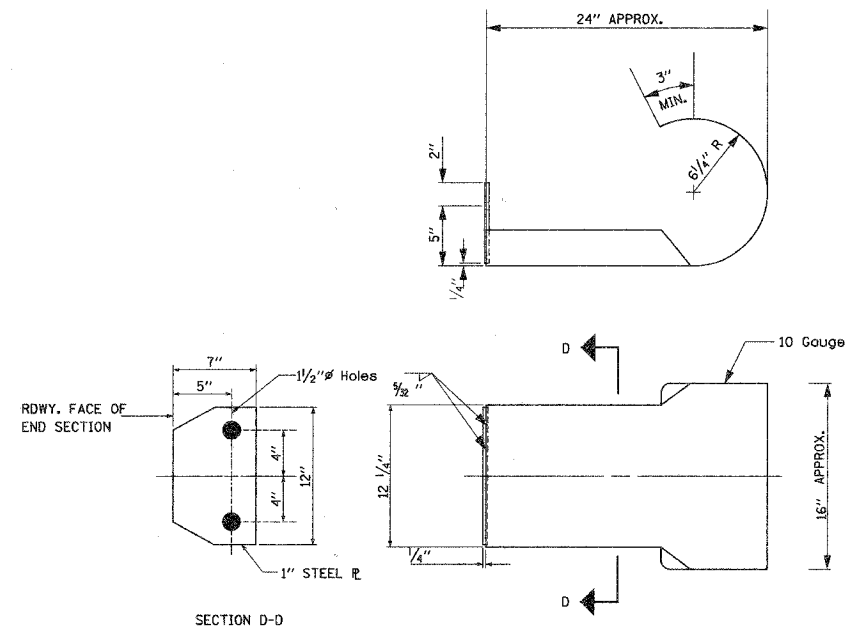
CURLED END SECTIONS DESIGN

SCALE: NONE  
BY: AMM  
DATE: 05/09/06  
REV:

13 OF 13 SHEETS

SHEET NO. 13

CURLED END SECTION DETAIL

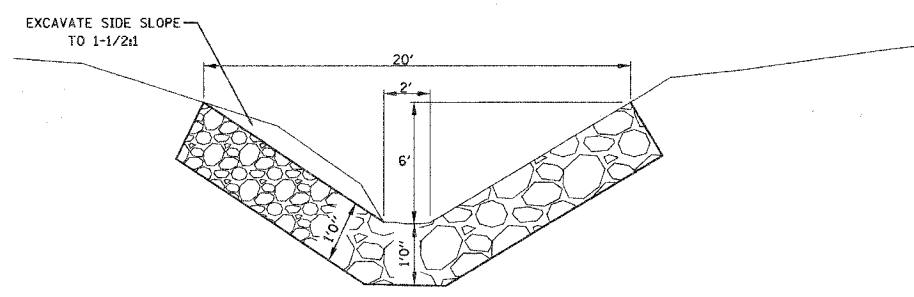


ALL OTHER STEEL SHAPES AND PLATES SHALL CONFORM TO THE REQUIREMENTS OF A.A.S.H.T.O. DESIGNATION M-183 EXCEPT POSTS AND ANGLES SHALL CONFORM TO A.A.S.H.T.O. M-223, GRADE 50.

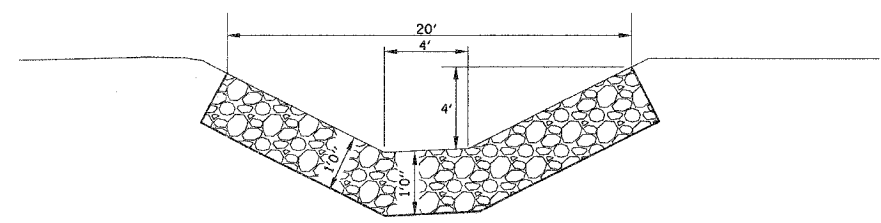
BOLTS, CAP SCREWS, AND NUTS SHALL CONFORM TO THE REQUIREMENT OF A.S.T.M. DESIGNATION A-307 EXCEPT FOR HIGH STRENGTH BOLTS, NUTS, AND WASHERS NOTED WHICH SHALL CONFORM TO A.A.S.H.T.O. DESIGNATION M-164.

ALL BOLTS, NUTS, CAP SCREWS, WASHERS, AND LOCK WASHERS SHALL BE GALVANIZED IN ACCORDANCE WITH A.A.S.H.T.O. DESIGNATION M-232.

ALL FIELD DRILLED HOLES SHALL BE COATED WITH AN APPROVED ZINC RICH PAINT BEFORE ERRECTION.



ELEVATION  
NOTE: SIDESLOPE = 1 1/2:1  
1.51 TON/LIN FT  
STA 5+02 - STONE RIPRAP DITCH DESIGN



ELEVATION  
NOTE: SIDESLOPE = 2:1  
1.56 TON/LIN FT  
STA 5+60 - STONE RIPRAP DITCH DESIGN