

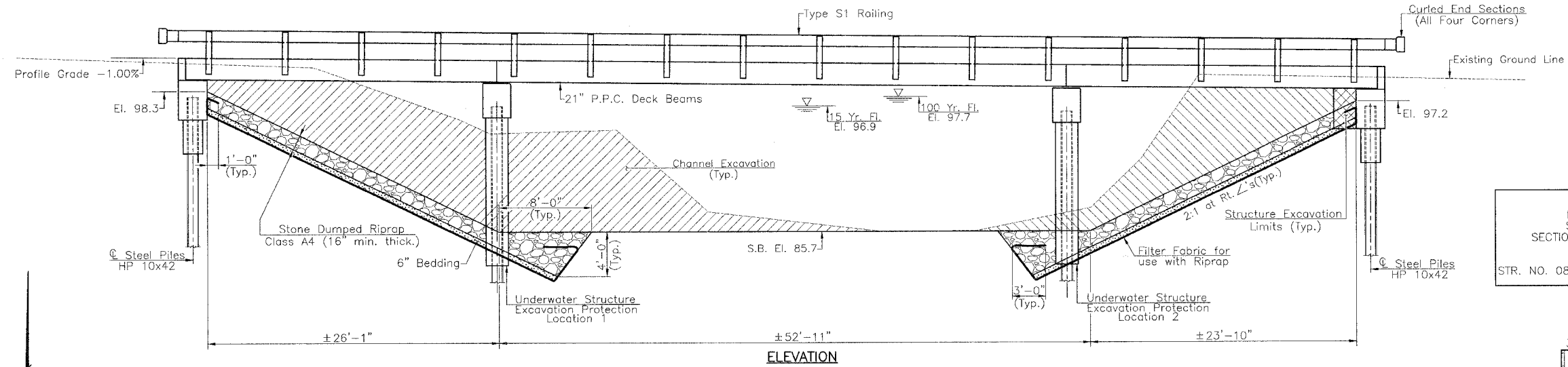
RTE.	SECTION	COUNTY	TOTAL SHEETS	SHEET NO.
T.R. 173	*	SHELBY	11	4

PROJECT BROS-173(144)

* 01-18116-00-BR

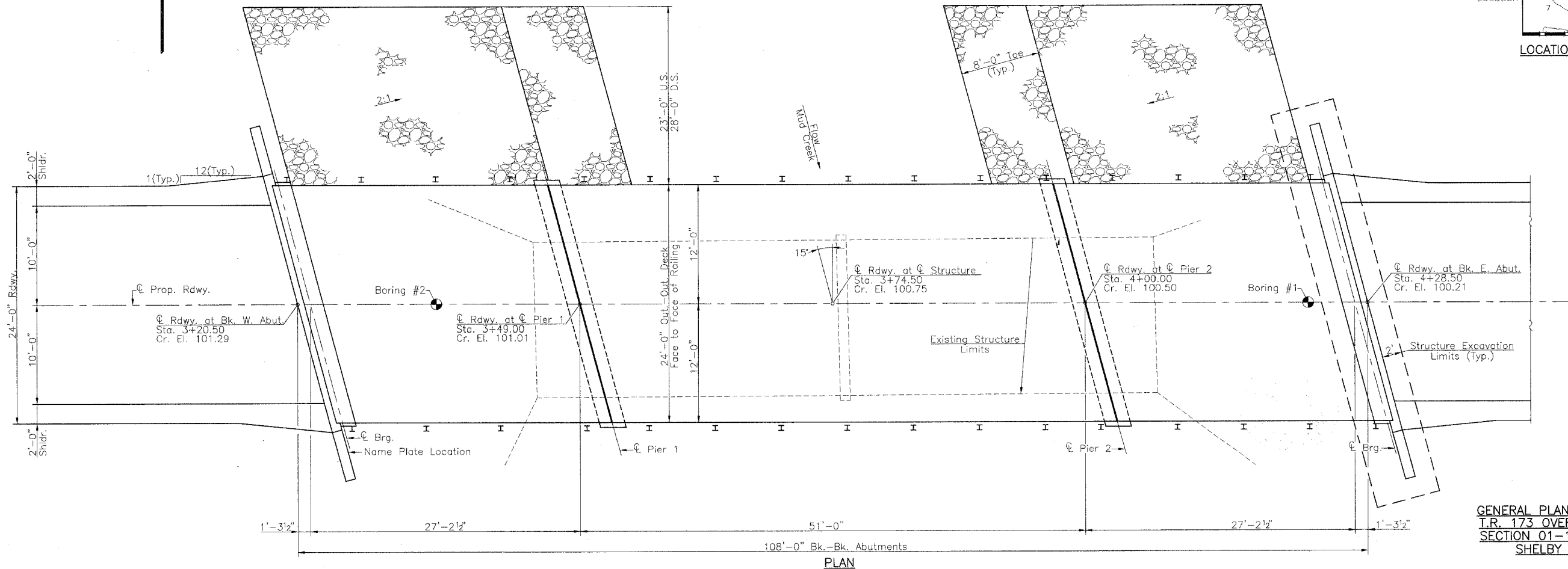
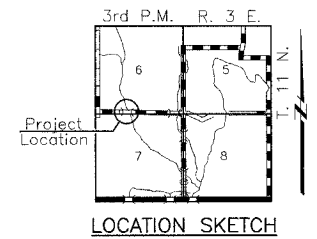
Existing Structure: Two Span Timber Deck on Steel Stringers with Closed Timber Abutments, Wingwalls and Pier on Timber Piles. ±63'-0" Bk.-Bk. Abutments, ±15'-7" Clear Deck Width. Tubular Steel Railing.

Benchmarks: BM#1 - PK N. & W. in Top of Timber Wingwall Pile
El. 100.00 (Assumed)



MUD CREEK
BUILT 200 BY
SHELBY COUNTY
SECTION 01-18116-00-BR
STA. 3+74.50
BROS-173(144)
STR. NO. 087-3532 LOADING HS20-44

NAME PLATE
(Standard 515001)



GENERAL PLAN & ELEVATION
T.R. 173 OVER MUD CREEK
SECTION 01-18116-00-BR
SHELBY COUNTY