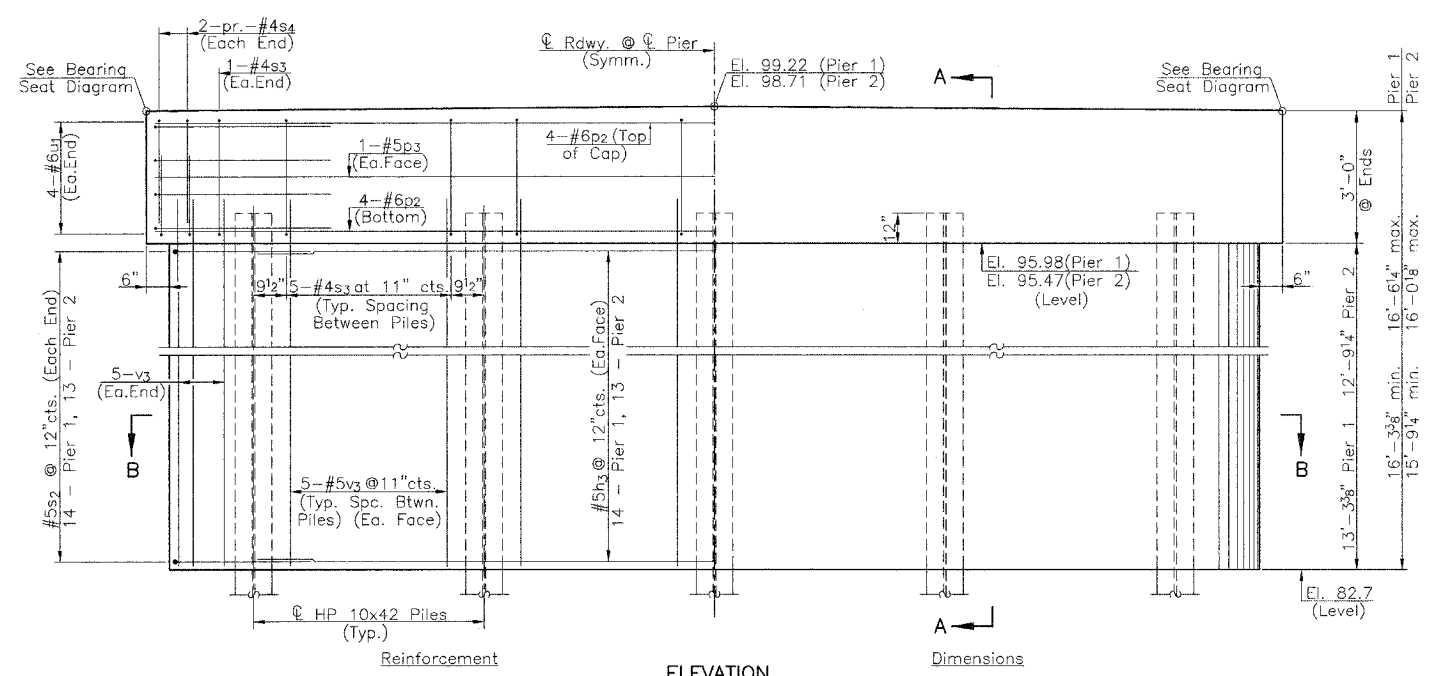
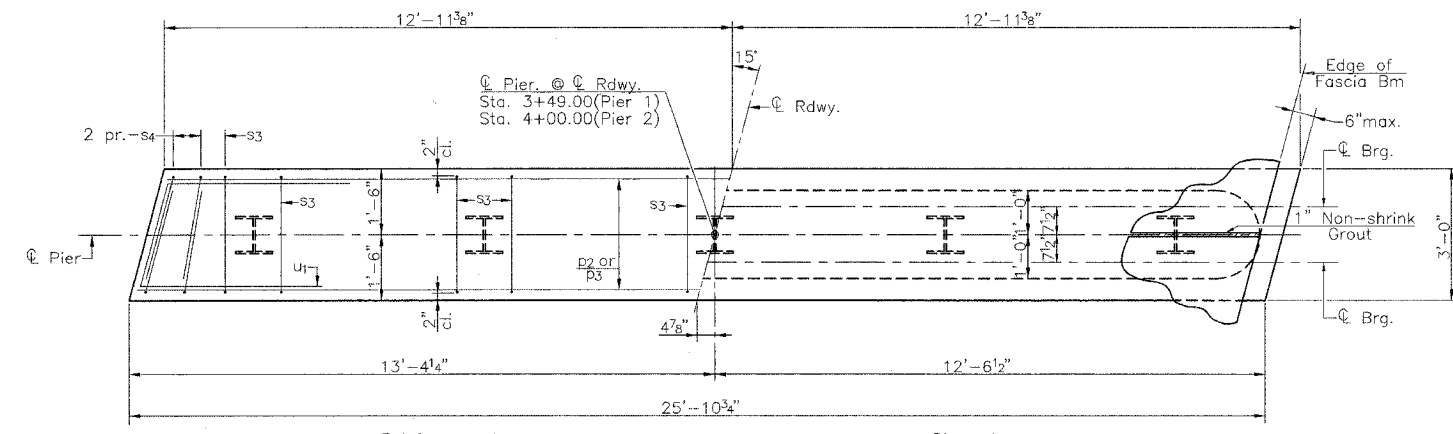


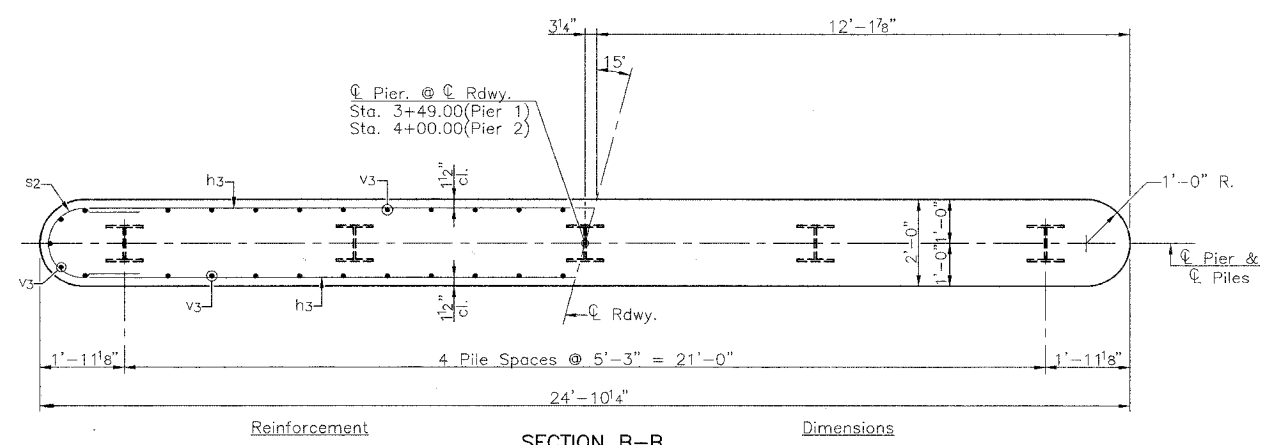
| | | | | |
|-----------------------|---------|--------|--------------|-----------|
| RTE. | SECTION | COUNTY | TOTAL SHEETS | SHEET NO. |
| T.R.173 | * | SHELBY | 11 | 9 |
| PROJECT BROS-173(144) | | | | |
| * 01-18116-00-BR | | | | |



ELEVATION



PLAN (Typical Pier Cap)

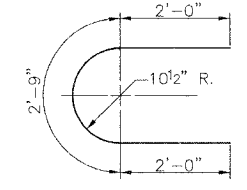


SECTION B-B

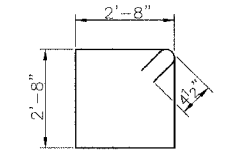
PILE DATA

| | | |
|---|-------------------|-------------------|
| | Pier 1 | Pier 2 |
| Pile Type & Size: | Steel HP 10x42 | Steel HP 10x42 |
| Nominal Required Bearing: | 335 kips | 335 kips |
| Allowable Resistance Available: Driven to Refusal | Driven to Refusal | Driven to Refusal |
| Estimated Pile Length: | 27' | 43' |
| Number of Production: | 4 | 4 |
| Number of Test Piles: | 1 | 1 |

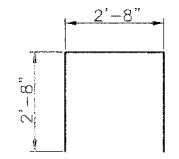
NOTES
 All exposed concrete edges shall have standard 3/4" chamfer except as noted.
 Space reinforcement in pier caps to miss beam anchor dowels.



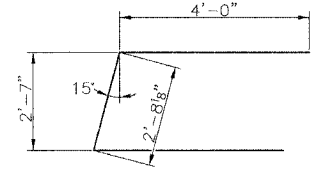
BAR s2



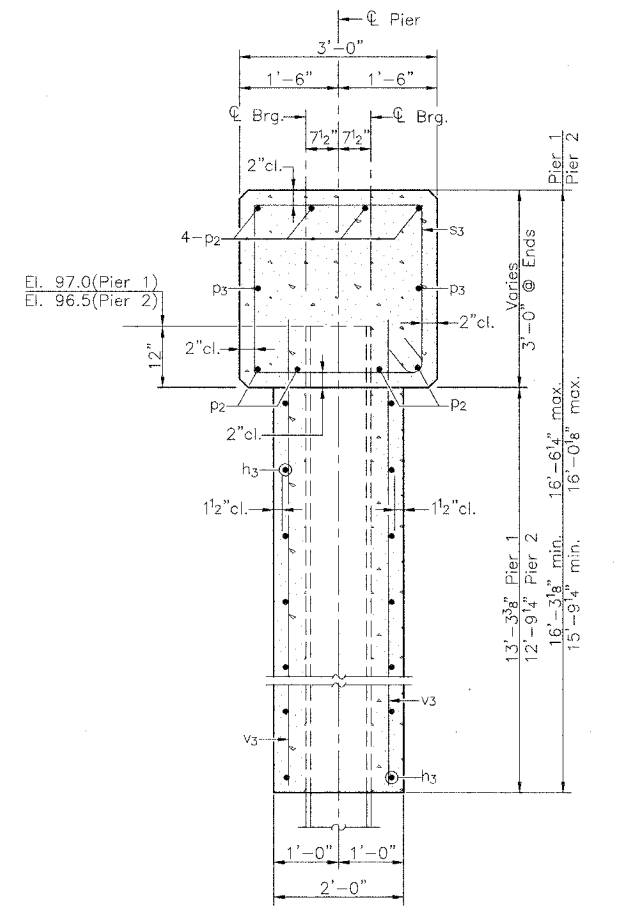
BAR s3



BAR s4



BAR u1

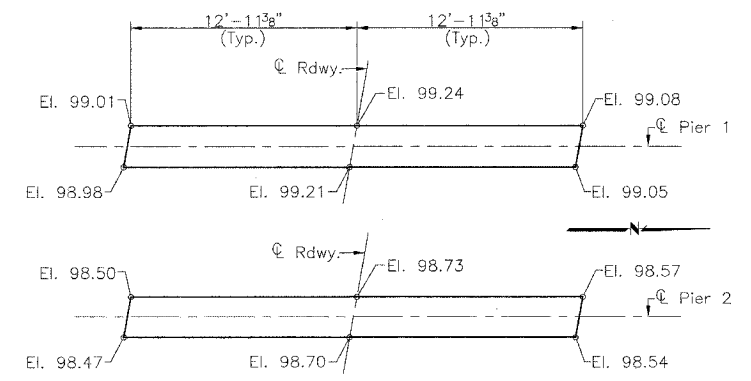


SECTION A-A

TWO PIERS BILL OF MATERIAL

| BAR | NO. | SIZE | LENGTH | SHAPE |
|-----|-----|------|--------|-------|
| h3 | 54 | #5 | 23'-0" | — |
| p2 | 16 | #6 | 25'-6" | — |
| p3 | 4 | #5 | 25'-6" | — |
| s2 | 54 | #5 | 6'-9" | U |
| s3 | 44 | #4 | 11'-5" | □ |
| s4 | 16 | #4 | 8'-0" | □ |
| u1 | 16 | #6 | 10'-8" | □ |
| v3 | 100 | #5 | 14'-6" | — |

| | | |
|---|---------|------|
| Concrete Structures | Cu. Yd. | 65.0 |
| Reinforcement Bars | Pound | 4585 |
| Furnishing Steel Piles HP 10x42 | Foot | 280 |
| Driving Piles | Foot | 280 |
| Test Pile Steel HP 10x42 | Each | 2 |
| Underwater Structure Excavation Protection- Location 1 (Pier 1) | Each | 1 |
| Underwater Structure Excavation Protection- Location 2 (Pier 2) | Each | 1 |
| Structure Excavation | Cu. Yd. | 39 |



BEARING SEAT DIAGRAM

PIERS
 T.R. 173 OVER MUD CREEK
 SECTION 01-18116-00-BR
 SHELBY COUNTY