

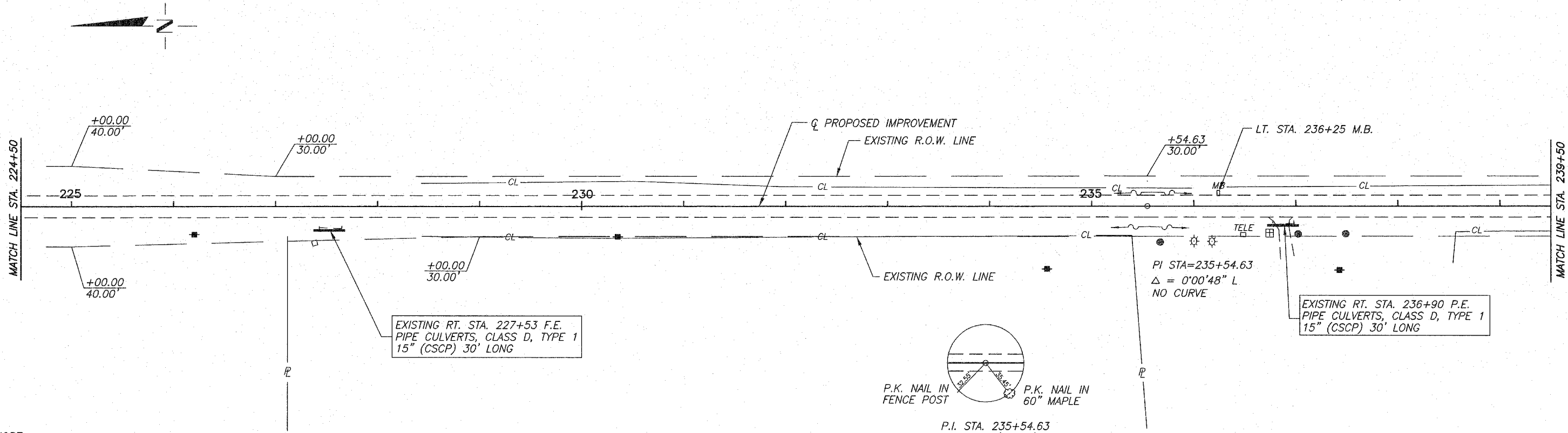
N.W. 1/4, S.W. 1/4, SEC. 26, T.10N., R.13W., 2ND PM.

THE COOK FAMILY TRUST

ROUTE NO.	SECTION	COUNTY	TOTAL SHEETS	SHEET NO.
F.A.S. 898	08-00262 -00-RS	CLARK	27	6
FED. ROAD DIST. NO. 7	ILLINOIS	PROJECT RS-898(106)		

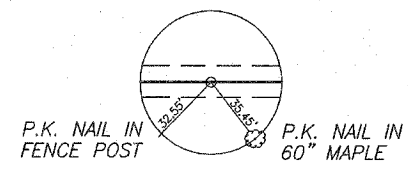
S.W. 1/4, S.W. 1/4, SEC. 26, T.10N., R.13W., 2ND PM.

CONTRACT NO. 95487



EXISTING RT. STA. 227+53 F.E. PIPE CULVERTS, CLASS D, TYPE 1 15" (CSCP) 30' LONG

EXISTING RT. STA. 236+90 P.E. PIPE CULVERTS, CLASS D, TYPE 1 15" (CSCP) 30' LONG



P.I. STA. 235+54.63 IRON PIN (FLUSH)

SCALES:  
1" = 50' HORZ.  
1" = 5' VERT.

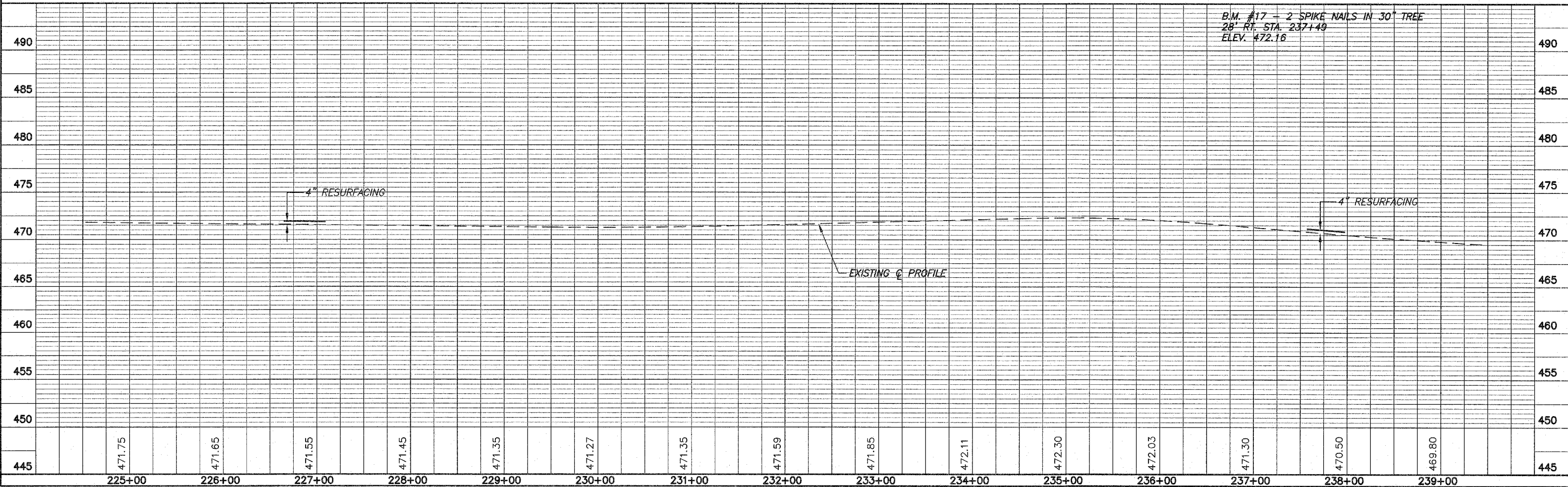
CHARLES E. HILLS

LARRY A. & BARBARA J. HILLS

PAUL F. & NITA L. HILLS

N.E. 1/4, S.E. 1/4, SEC. 27, T.10N., R.13W., 2ND PM.

S.E. 1/4, S.E. 1/4, SEC. 27, T.10N., R.13W., 2ND PM.



B.M. #17 - 2 SPIKE NAILS IN 30" TREE  
28' RT. STA. 237+49  
ELEV. 472.16