

DALE HUISINGA

ROUTE NO.	SECTION	COUNTY	TOTAL SHEETS	SHEET NO.
F.A.S. 696	08-0282 -00-RS	CLARK	27	20
FED. ROAD DIST. NO. 7	ILLINOIS PROJECT	RS-696(106)		

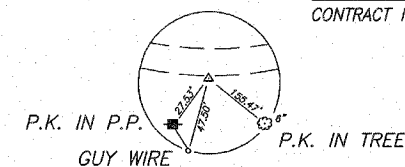
CONTRACT NO. 95487



CURVE DATA

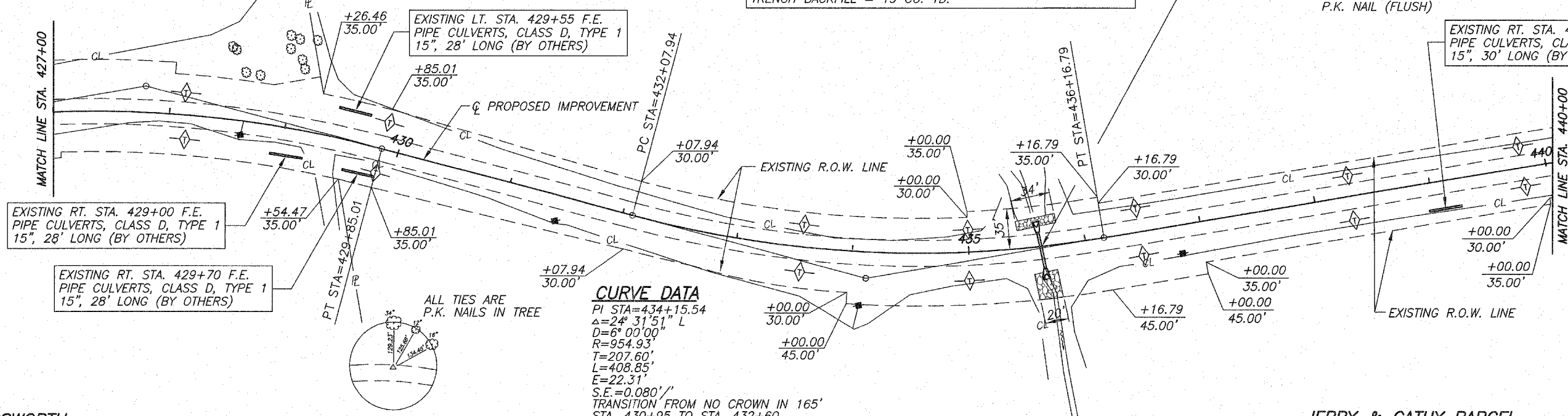
PI STA=427+81.93
 $\Delta=24^\circ 45' 44''$ R
 D=6' 00' 00"
 R=954.93'
 T=209.62'
 L=412.70'
 E=22.74'
 S.E.=0.080'/' ATTAINED IN 204'
 STA. 424+36.30 TO STA. 426+40.30
 TRANSITION TO NO CROWN IN 165'
 STA. 429+30 TO STA. 430+95

EXISTING PIPE CULVERT
 A.R. STA. 435+62 SKEW 6° RT. AHEAD
 FROM TANGENT LINE TO P.I.
 PIPE CULVERTS, TYPE 1, REINFORCED CONCRETE-
 ELLIPTICAL EQUIVALENT ROUND-SIZE 42", 38' LONG
 PRECAST REINFORCED CONCRETE FLARED END SECTIONS-
 ELLIPTICAL EQUIVALENT ROUND-SIZE 42" = 2 EACH
 GRATING FOR CONCRETE FLARED END SECTION
 EQUIVALENT ROUND-SIZE 42" = 1 EACH (AT UPSTREAM END)
 20.7' LT. STA. 435+58.3 U.S.F.L. 449.50
 32.6' RT. STA. 435+66.9 D.S.F.L. 448.00
 TRENCH BACKFILL = 19 CU. YD.



P.I. STA. 434+15.54
 P.K. NAIL (FLUSH)

EXISTING RT. STA. 439+08 F.E.
 PIPE CULVERTS, CLASS D, TYPE 1
 15", 30' LONG (BY OTHERS)

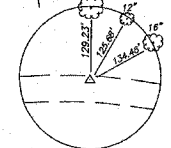


INDICATES STONE
 RIPRAP DITCH (EXISTING)

CURVE DATA

PI STA=434+15.54
 $\Delta=24^\circ 31' 51''$ L
 D=6' 00' 00"
 R=954.93'
 T=207.60'
 L=408.85'
 E=22.31'
 S.E.=0.080'/'
 TRANSITION FROM NO CROWN IN 165'
 STA. 430+95 TO STA. 432+60
 ATTAINED IN 204'
 STA. 435+48.79 TO STA. 437+52.79

ALL TIES ARE
 P.K. NAILS IN TREE



P.I. STA. 427+81.93
 P.K. NAIL (FLUSH)

JERRY & CATHY PARCEL

S.E. 1/4, N.E. 1/4, SEC. 15, T.9N., R.13W., 2ND PM.

LINDA HOLLINGSWORTH

N.E. 1/4, N.E. 1/4, SEC. 15, T.9N., R.13W., 2ND PM.

B.M. #29 - 2 NAILS IN P.P.
 24" RT. STA. 431+44
 ELEV. 455.95

