

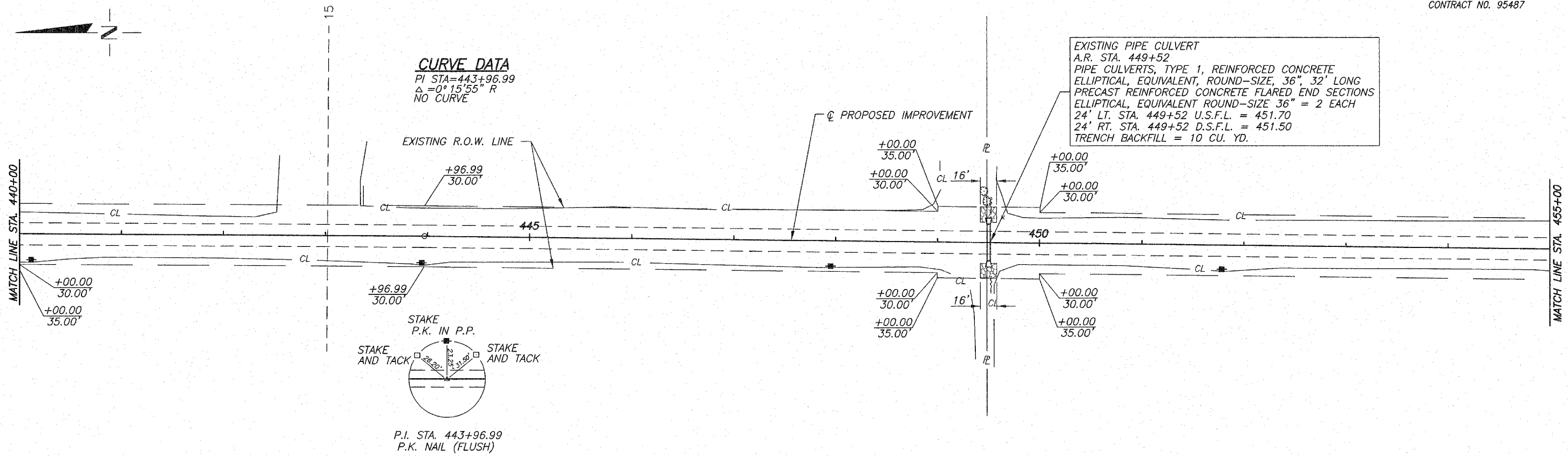
S.E. 1/4, N.E. 1/4, SEC. 15, T.9N., R.13W., 2ND PM.
JOHN BLANKENBEKER

N.E. 1/4, S.E. 1/4, SEC. 15, T.9N., R.13W., 2ND PM.
ALLIENNE THOMPSON

DALE MILLIS

ROUTE NO.	SECTION	COUNTY	TOTAL SHEETS	SHEET NO.
F.A.S. 696	06-00262-00-RS	CLARK	27	21
FED. ROAD DIST. NO. 7		ILLINOIS PROJECT	RS-696(106)	

CONTRACT NO. 95487



JERRY & CATHY PARCEL
 S.E. 1/4, N.E. 1/4, SEC. 15, T.9N., R.13W., 2ND PM.

DALE MILLIS
 N.E. 1/4, S.E. 1/4, SEC. 15, T.9N., R.13W., 2ND PM.

B.M. #30 - 2 NAILS IN P.P.
 25' RT. STA. 447+95
 ELEV. 455.21

