

DALE MILLIS

P & ALLIENE THOMPSON

ROUTE NO.	SECTION	COUNTY	TOTAL SHEETS	SHEET NO.
F.A.S. 696	06-00262-00-RS	CLARK	27	22
FED. ROAD DIST. NO. 7		ILLINOIS	PROJECT	RS-696(106)

CONTRACT NO. 95487

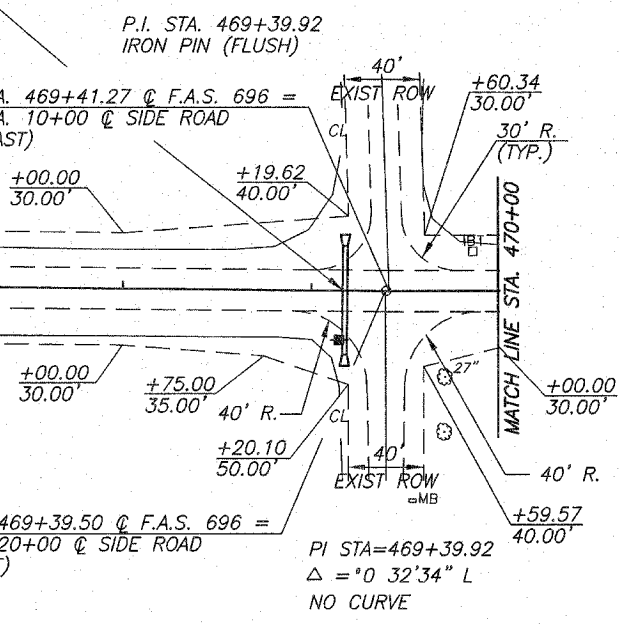


EXISTING LT. STA. 456+16 P.E. & M.B.
PIPE CULVERTS, CLASS D, TYPE 1
15", 28' LONG (BY OTHERS)

EXISTING LT. STA. 457+32 F.E.
PIPE CULVERTS, CLASS D, TYPE 1
15", 28' LONG (BY OTHERS)

EXISTING RT. STA. 456+03 F.E.
PIPE CULVERTS, CLASS D, TYPE 1
15", 28' LONG (BY OTHERS)

EXISTING PIPE CULVERT
A.R. STA. 469+18
PIPE CULVERTS, TYPE 1, REINFORCED
CONCRETE - ELLIPTICAL, EQUIVALENT,
ROUND-SIZE 30", 58' LONG
PRECAST REINFORCED CONCRETE
FLARED END SECTIONS - ELLIPTICAL,
EQUIVALENT ROUND-SIZE 30" = 2 EACH
30' LT. STA. 469+18 U.S.F.L. = 456.26
40' RT. STA. 469+18 D.S.F.L. = 456.11
TRENCH BACKFILL = 4 CU. YD.



MATCH LINE STA. 455+00

MATCH LINE STA. 470+00

DALE MILLIS
S.E. 1/4, SEC. 15, T.9N., R.13W., 2ND PM.

EUGENE & MAE JANNEY
S.E. 1/4, S.E. 1/4, SEC. 15, T.9N., R.13W., 2ND PM.

B.M. #31 - 2 NAILS IN P.P.
25 RT. STA. 465+77
ELEV. 460.20

