

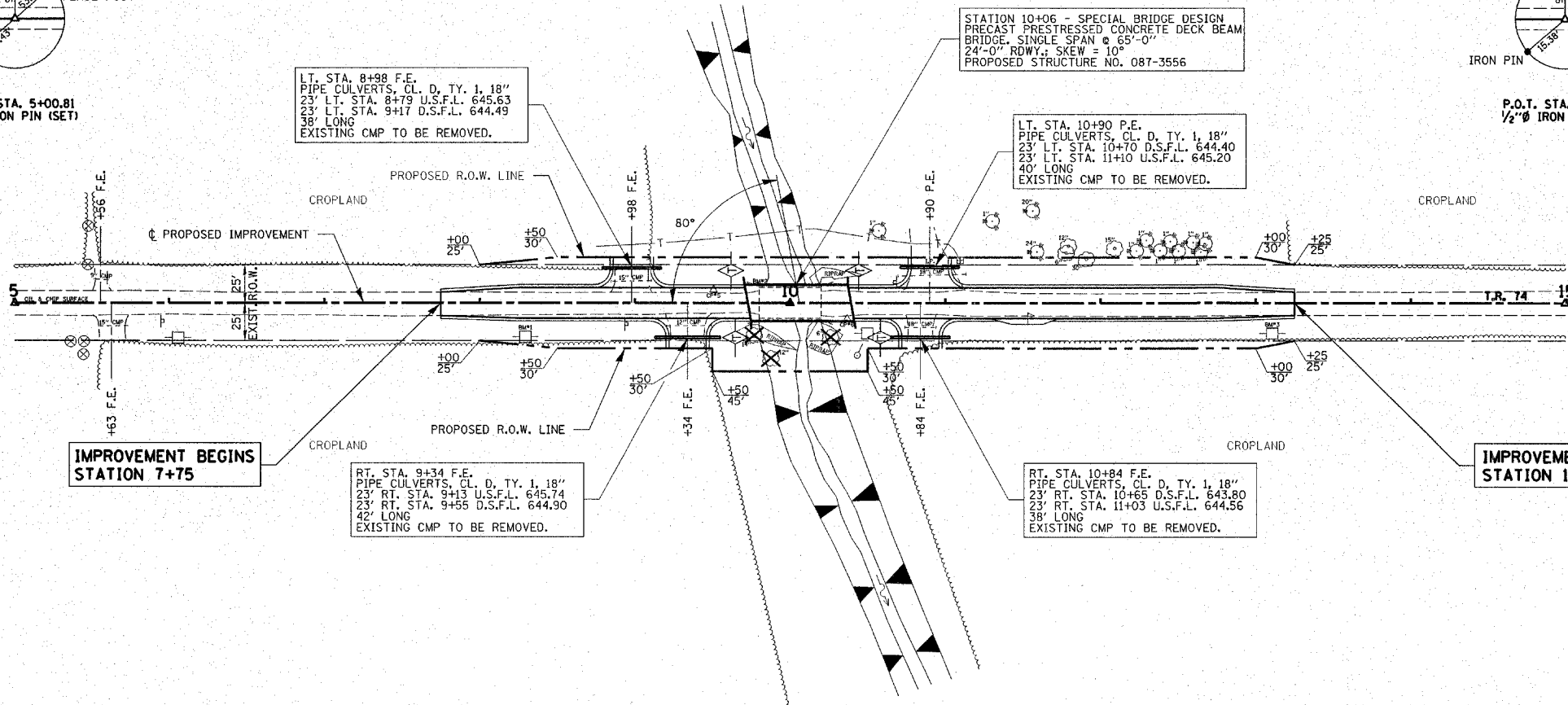
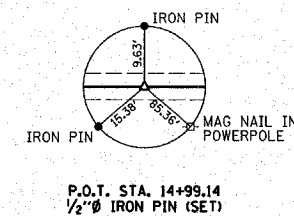
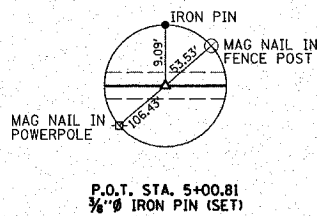
DATE	
BY	
REVISION	
NO.	
DATE	
BY	
REVISION	
NO.	
DATE	
BY	
REVISION	
NO.	

DATE	
BY	
REVISION	
NO.	
DATE	
BY	
REVISION	
NO.	
DATE	
BY	
REVISION	
NO.	

DATE	
BY	
REVISION	
NO.	
DATE	
BY	
REVISION	
NO.	
DATE	
BY	
REVISION	
NO.	

PATRICK & MARY CREAMER
N 1/2, SE 1/4, SEC 29, T. 12 N., R. 2 E., 3RD P.M.

T.R.	SECTION	COUNTY	TOTAL SHEETS
74	06-19116-00-BR	SHELBY	12
STA. 5+00		TO STA. 15+00	
FED. ROAD DIST. NO.		ILLINOIS CONTRACT NO. 9549	
RURAL ROAD DISTRICT			



NANCY L. KILLAM
N 1/2, SW 1/4, SEC 28, T. 12 N., R. 2 E., 3RD P.M.

- MAILBOX TURNOUT**
RT. STA. 11+53 AGG.
- ENTRANCES TO BE BUILT**
LT. STA. 8+98 F.E. -9.2% AGG. 24' SURF.
RT. STA. 9+34 F.E. +1.0% AGG. 24' SURF.
RT. STA. 10+84 F.E. -11.9% AGG. 24' SURF.
LT. STA. 10+90 P.E. -8.4% AGG. 24' SURF.
QUANTITIES INCLUDED IN EARTHWORK TABLE.
- TREE REMOVAL** ✕
INDICATES TREE TO BE REMOVED
- TEMPORARY DITCH CHECKS** ◇
DITCH CHECKS SHALL BE CONSTRUCTED AS DIRECTED BY THE ENGINEER IF EARTH SLOPES TO BE EXPOSED MORE THAN 7 DAYS.
- CHANNEL EXCAVATION**
THE CHANNEL SHALL BE EXCAVATED AS SHOWN IN THE PLANS WITH 2:1 SIDE SLOPES WITHIN THE LIMIT OF THE PROPOSED STRUCTURE, THEN TAPER TO THE EXISTING CHANNEL AT THE R.O.W. LINES. ONLY SUITABLE EXCAVATED MATERIAL SHALL BE USED IN THE EMBANKMENT.
- EXISTING STRUCTURE NO. 087-3084**
STATION 10+00 - TWO SPAN PRECAST CONCRETE SLAB BRIDGE ON TIMBER ABUTMENTS WITH TIMBER PIERS AND WINGWALLS.
39.90' FC-FC. ABUTS; 22.35' o-o. DECK
REMOVAL OF EXISTING STRUCTURES = 1 EACH

