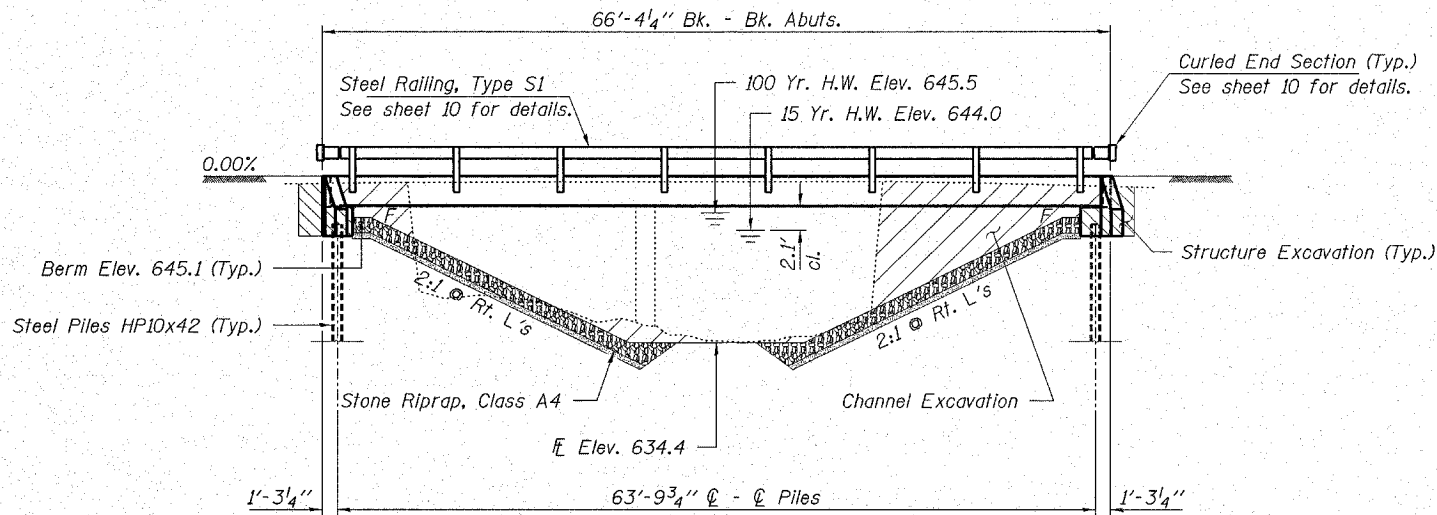


ROUTE NO.	SECTION	COUNTY	TOTAL SHEETS
T.R. 74	06-19116-00-BR	SHELBY	12
FED. ROAD DIST. NO.	ILLINOIS	FED. AID PROJECT	

CONTRACT NO. 95499



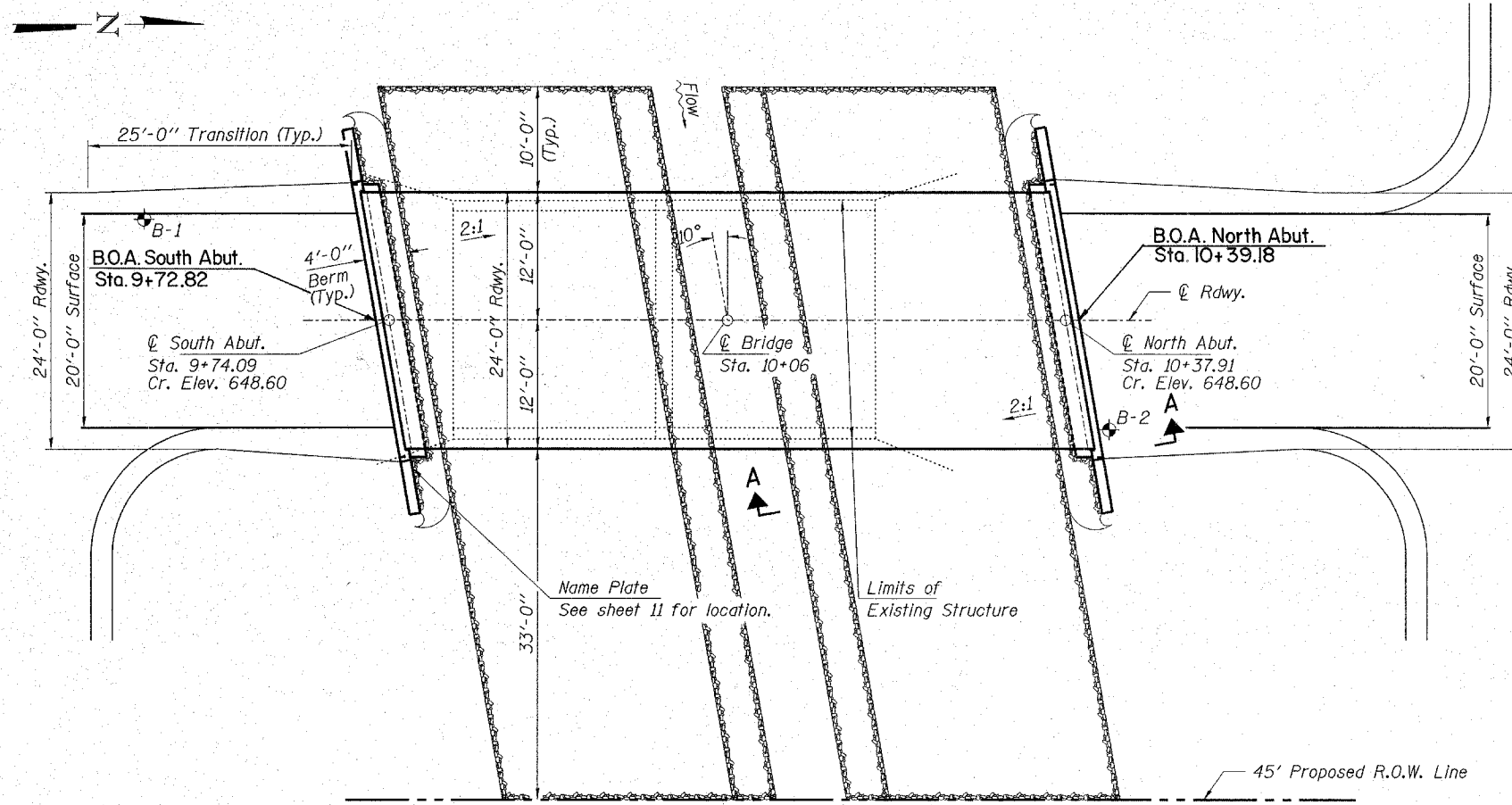
ELEVATION

GENERAL NOTES

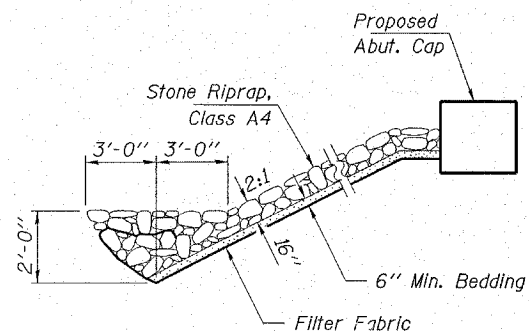
Layout of riprap may be varied in the field to suit ground conditions as directed by the Engineer.
 The contractor shall drive test piles to 110% of the nominal required bearing specified in production locations at the South Abutment or approved by the Engineer before ordering the remainder of the piles.
 All proposed construction activities shall be in accordance with Nationwide Permit number 14 of the Department of the Army authorized under Section 404 of the Clean Water Act. The IEPA has issued Section 401 Water Quality Certification for this activity. See Special Provisions for conditions. See sheet 12 for Borings.

MUD CREEK
 BUILT 200_ BY
 SHELBY COUNTY
 SEC. 06-19116-00-BR
 F.A. PROJ. BROS-173(147)
 LOADING HS 20
 STR. NO. 087-3556

NAME PLATE
 See Std. 515001

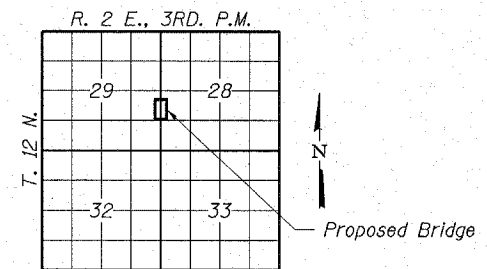


PLAN



SECTION A-A

Note: See Special Provisions for Stone Riprap, Class A4.



LOCATION SKETCH

DESIGN STRESSES

FIELD UNITS

f'c = 3,500 psi
 fy = 60,000 psi (Reinf.)

PRECAST PRESTRESSED UNITS

f'c = 5,000 psi
 f'ci = 4,000 psi
 f's = 270,000 psi (1/2" low lax. strands)
 f'si = 201,960 psi (1/2" low lax. strands)
 fy = 60,000 psi (Reinf.)

Loading HS 20-44
 Design Specifications: 2002 AASHTO & all applicable interims.
 25#/Sq. Ft. included in dead load for future wearing surface.

SEISMIC DATA

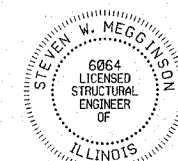
Seismic Performance Category (SPC) = A
 Bedrock Acceleration Coefficient (A) = 0.06g
 Site Coefficient (S) = 1.2

WATERWAY INFORMATION

Drainage Area = 2.5 Sq. Mi.		Low Grade Elev. 648.6 @ Sta. 10+06				
Flood	Freq. Yr.	Q C.F.S.	Opening Sq. Ft.	Natural H.W.E.	Head - Ft.	Headwater El.
Design	15	770	290	644.0	0.6	644.6
Base	100	1,240	340	645.5	0.5	646.0
Max. Calc.	500	1,630	370	646.3	0.5	646.8

I certify that to the best of my knowledge, information and belief, this bridge design is structurally adequate for the design loading shown on the plans. The design is an economical one for the style of structure and complies with requirements of the current "AASHTO Standard Specifications for Highway Bridges".

Steven W. Meggins, 12-18-06
 ILLINOIS STRUCTURAL NO. 6064



Expires 11-30-08

TOTAL BILL OF MATERIAL

ITEM	UNIT	SUPER	SUB	TOTAL
Structure Excavation	Cu. Yd.			40
Stone Riprap, Class A4	Ton			340
Filter Fabric	Sq. Yd.			474
Concrete Structures	Cu. Yd.		18.6	18.6
Precast Prestressed Concrete Deck Beams (27" Depth)	Sq. Ft.	1,560		1,560
Reinforcement Bars	Pound		2,480	2,480
Steel Railing, Type S1	Foot	130		130
Steel Piles HP10x42	Foot		140	140
Test Pile Steel HP10x42	Each		1	1
Concrete Encasement	Cu. Yd.		2.0	2.0
Name Plates	Each		1	1

HAMPTON, LENZINI & RENWICK, INC.
 CIVIL & STRUCTURAL ENGINEERS

HLR

3085 STEVENSON DRIVE, SUITE 201
 SPRINGFIELD, ILLINOIS 62703
 (217) 546-3400

ELGIN • SPRINGFIELD

PROJECT NUMBER: 12-87-0017-1 DATE: 12/18/06
 DESIGNED: J.W.F. CHECKED: S.W.M. DRAWN: D.T.M.

GENERAL PLAN AND ELEVATION
 SECTION 06-19116-00-BR
 RURAL ROAD DISTRICT
 SHELBY COUNTY
 STRUCTURE NO. 087-3556 / STATION 10+06