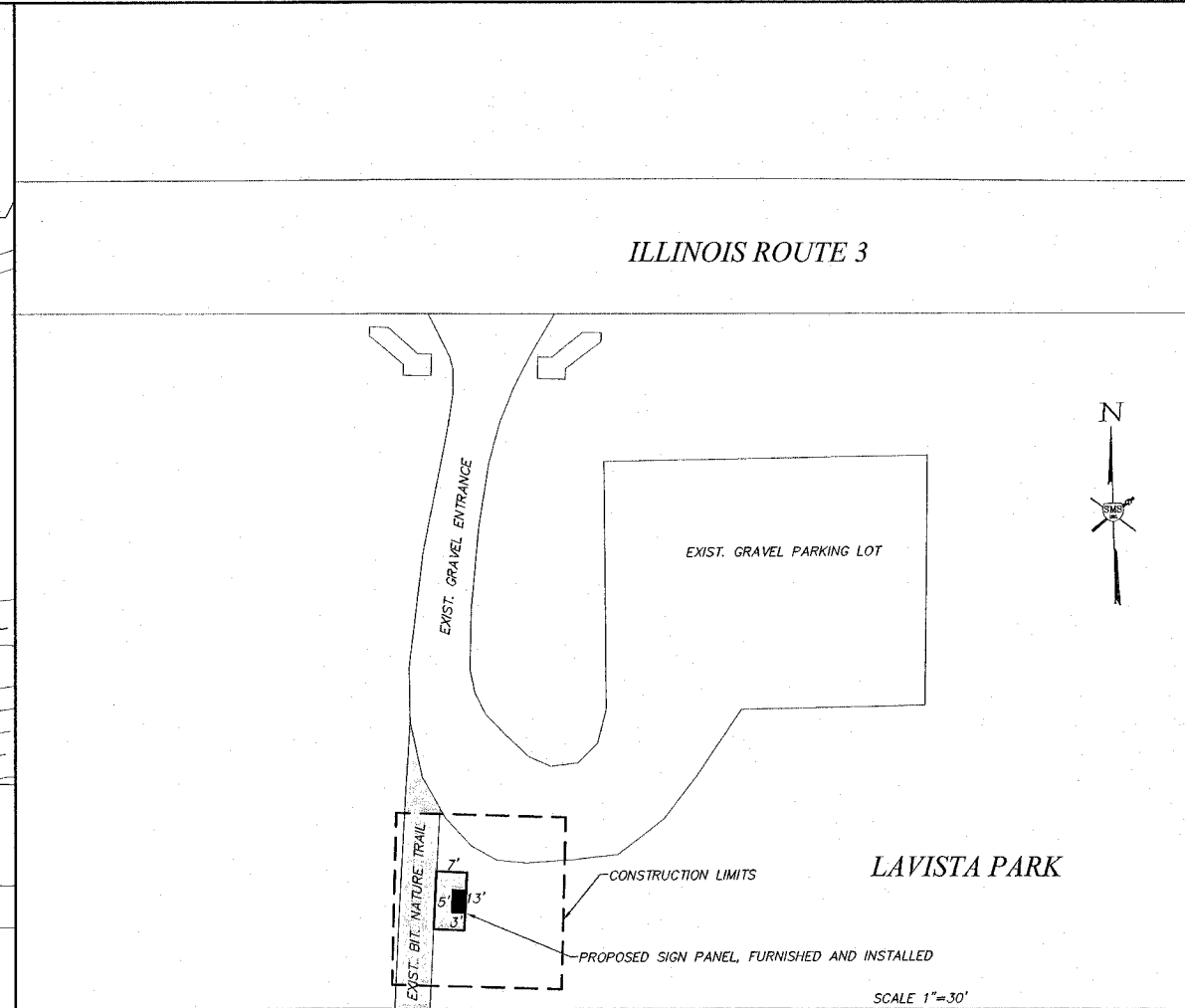
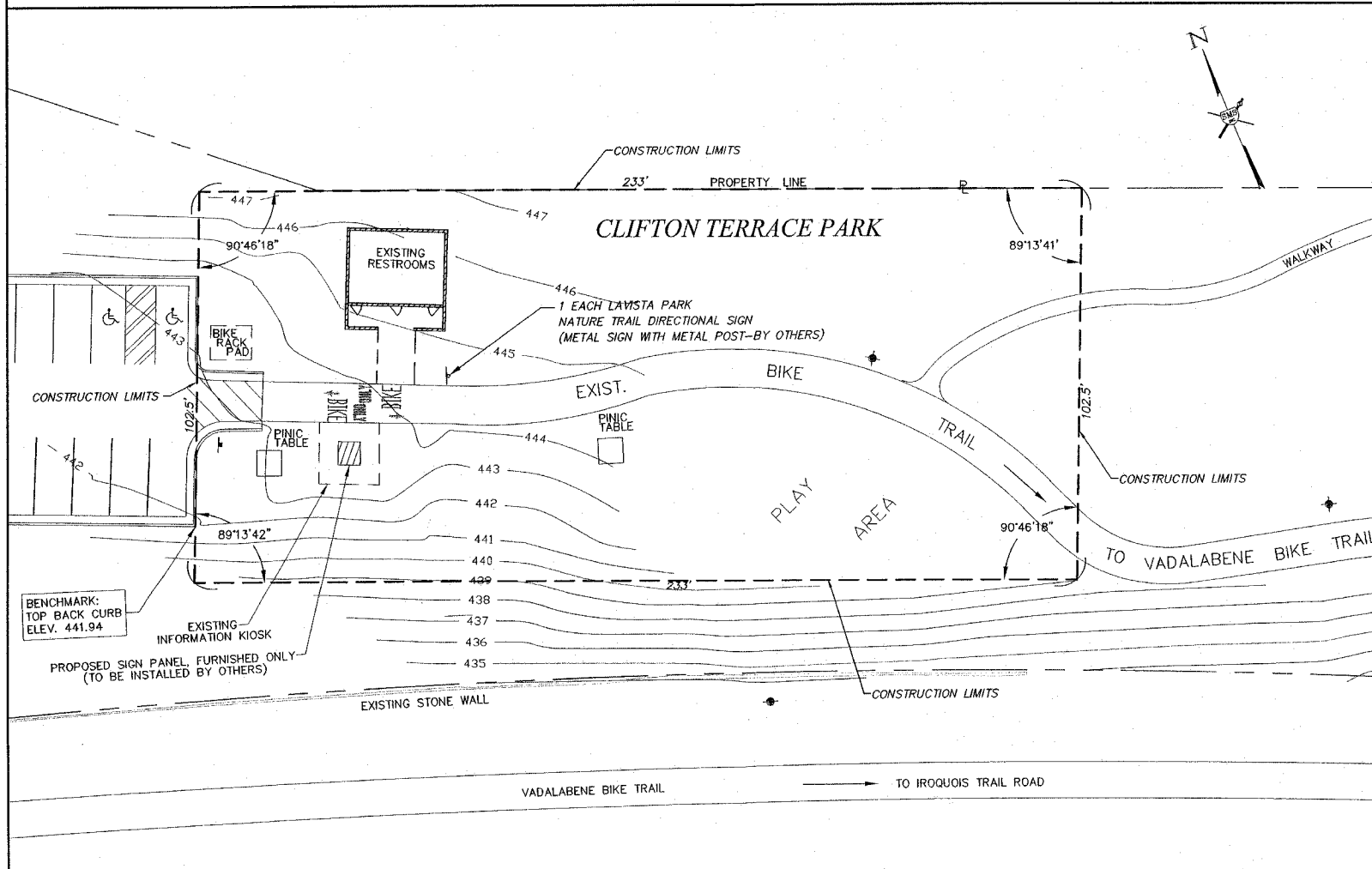
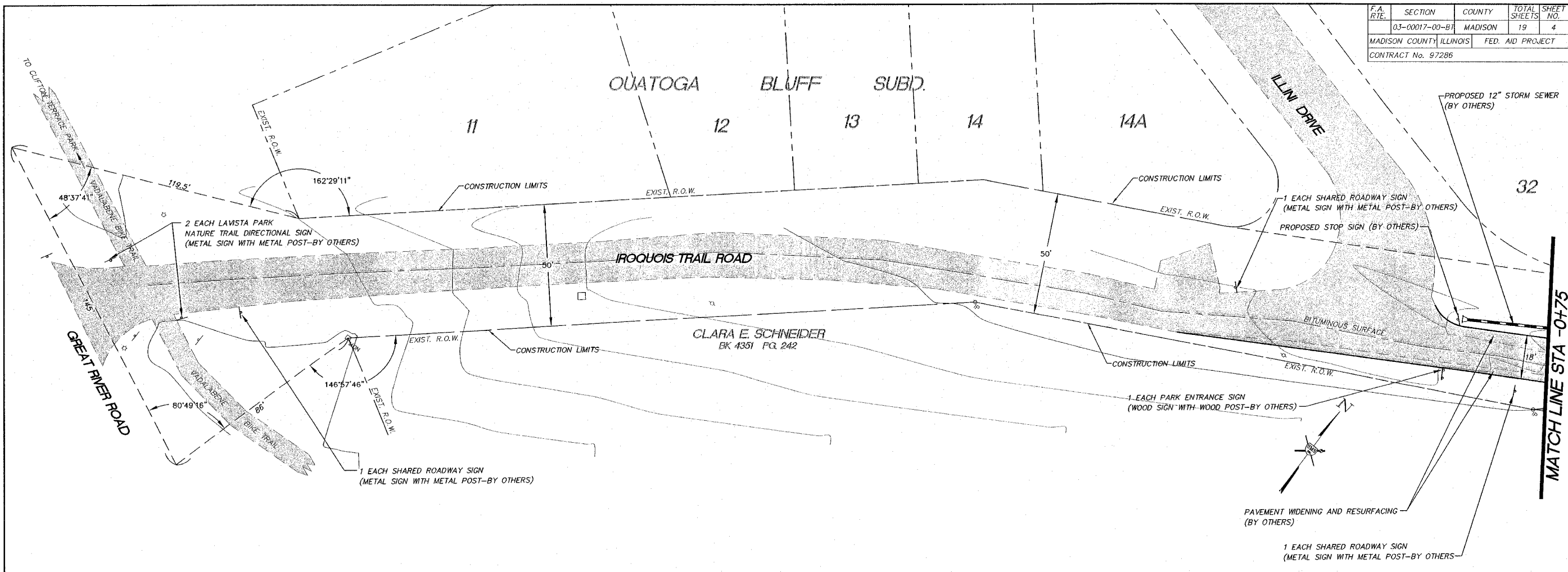


F.A. RTE.	SECTION	COUNTY	TOTAL SHEETS	SHEET NO.
03-00017-00-BT		MADISON	19	4
MADISON COUNTY, ILLINOIS		FED. AID PROJECT		
CONTRACT No. 97286				



REVISIONS

SMS Sheppard, Morgan & Schwaab, Inc.
CONSULTING ENGINEERS AND LAND SURVEYORS
315 Market Street, P.O. Box E, Alton, IL 62002-6100
315 Market Street, P.O. Box E, Alton, IL 62002-6100
90 Central Industrial Drive, Granite City, IL 62040-6188

ENGINEERS

VILLAGE OF GODFREY, ILLINOIS
LAVISTA PARK NATURE TRAIL IMPROVEMENTS
GODFREY SECTION 03-00017-00-BT
DETAILS OF CONSTRUCTION

REF. BK.	PG.
JOB NO.	436010
DSN. BY:	CLA
DWN. BY:	CDP
CHK. BY:	JHH
DATE:	JUNE, 2006
SCALE:	HORIZ. 1"=20'
SHEET	4 OF 19