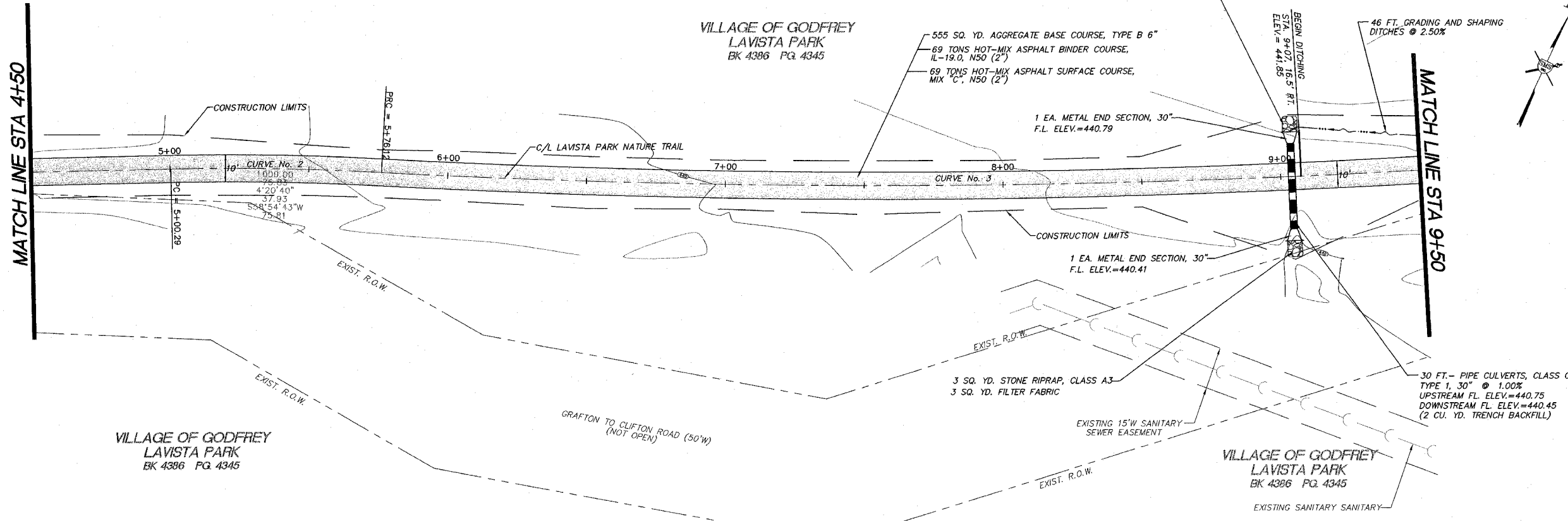


F.A. RTE.	SECTION	COUNTY	TOTAL SHEETS	SHEET NO.
03-00017-00-BT	MADISON	ILLINOIS	19	6
MADISON COUNTY ILLINOIS		FED. AID PROJECT		
CONTRACT No. 97286				

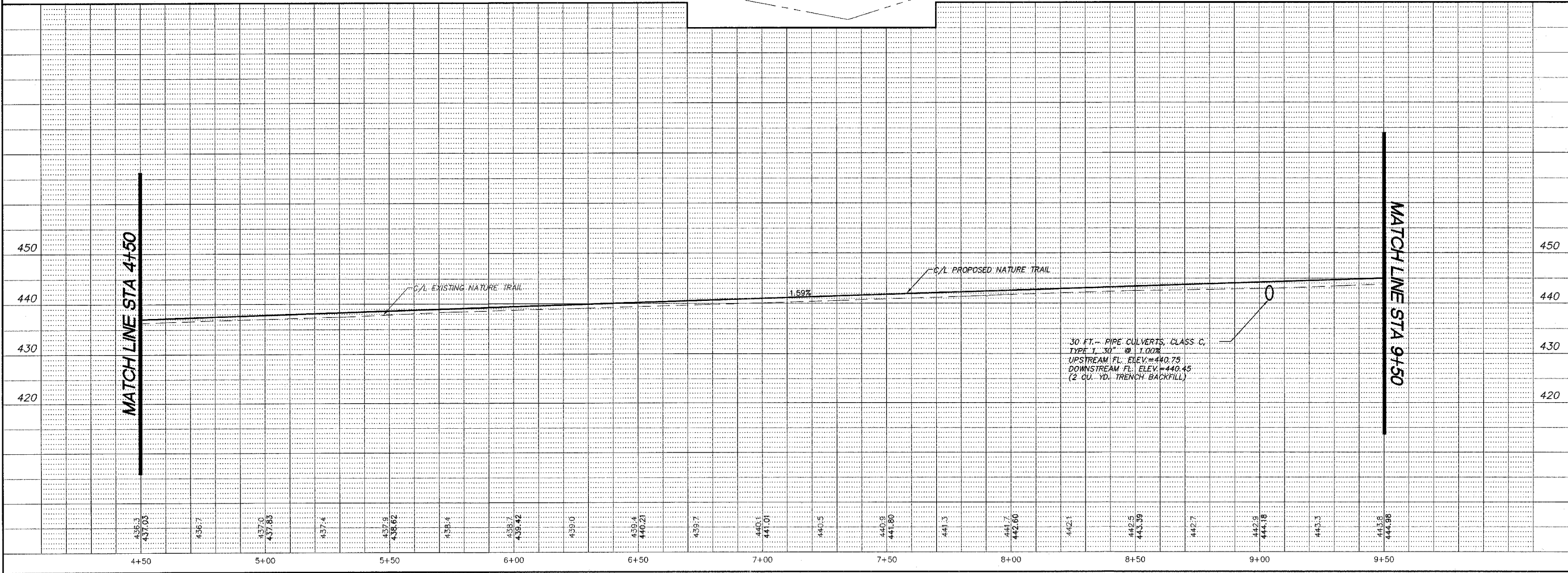
**HORIZONTAL CURVE DATA**  
**CURVE No. 2**  
 $\Delta = 4^{\circ} 20' 40''$   
 $R = 1000.00'$   
 $T = 37.93$   
 $L = 75.83$   
 $PI = 5+38.23$   
 $PC = 5+00.29$   
 $PT = 5+76.12$

**HORIZONTAL CURVE DATA**  
**CURVE No. 3**  
 $\Delta = 7^{\circ} 27' 11''$   
 $R = 3264.84$   
 $T = 212.65$   
 $L = 424.70$   
 $PI = 7+88.77$   
 $PC = 5+76.12$   
 $PT = 10+00.82$



MATCH LINE STA 4+50

MATCH LINE STA 9+50



REVISIONS


**SMS ENGINEERS**  
**Sheppard, Morgan & Schwab, Inc.**  
 CONSULTING ENGINEERS AND LAND SURVEYORS  
 215 Harriet Street, P.O. Box E, Alton, IL 62002-0166; 618-462-9765; Email: ms@smsengineers.com  
 10 Central Industrial Drive, Granite City, IL 62040-5167; 618-677-5700; E-mail: ms@smsengineers.com

VILLAGE OF GODFREY, ILLINOIS  
 LAVISTA PARK NATURE TRAIL IMPROVEMENTS  
 GODFREY SECTION 03-00017-00-BT  
 PLAN AND PROFILE

LAVISTAPP3.DWG

REF. BK.	PG.
JOB NO.	436010
DSN. BY:	CLA
DWN. BY:	CDP
CHK. BY:	JRH
DATE:	JUNE, 2006
SCALE:	HORIZ. 1"=20' VERT. 1"=10'
SHEET	6 OF 19

g:\land projects\godfrey\pdr\_436010\Draw\LAVISTAPP3.dwg, 12/22/2006 1:50:00 PM, gpratt, 1:20