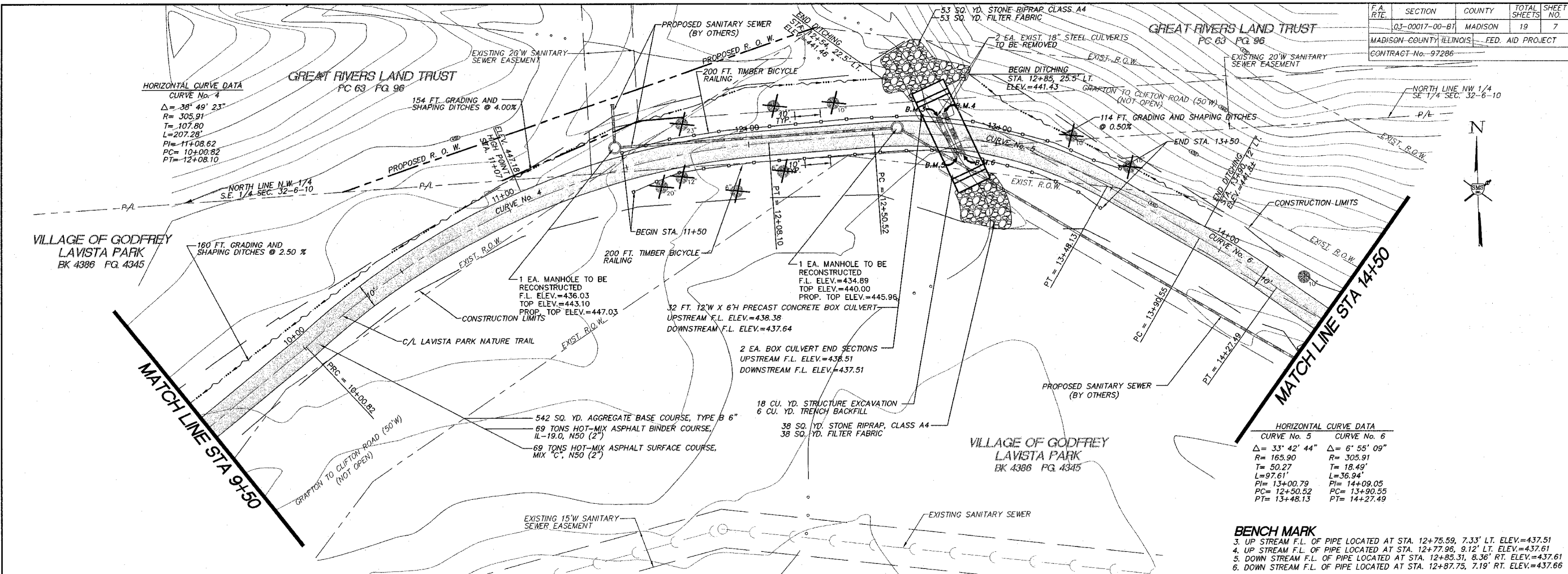


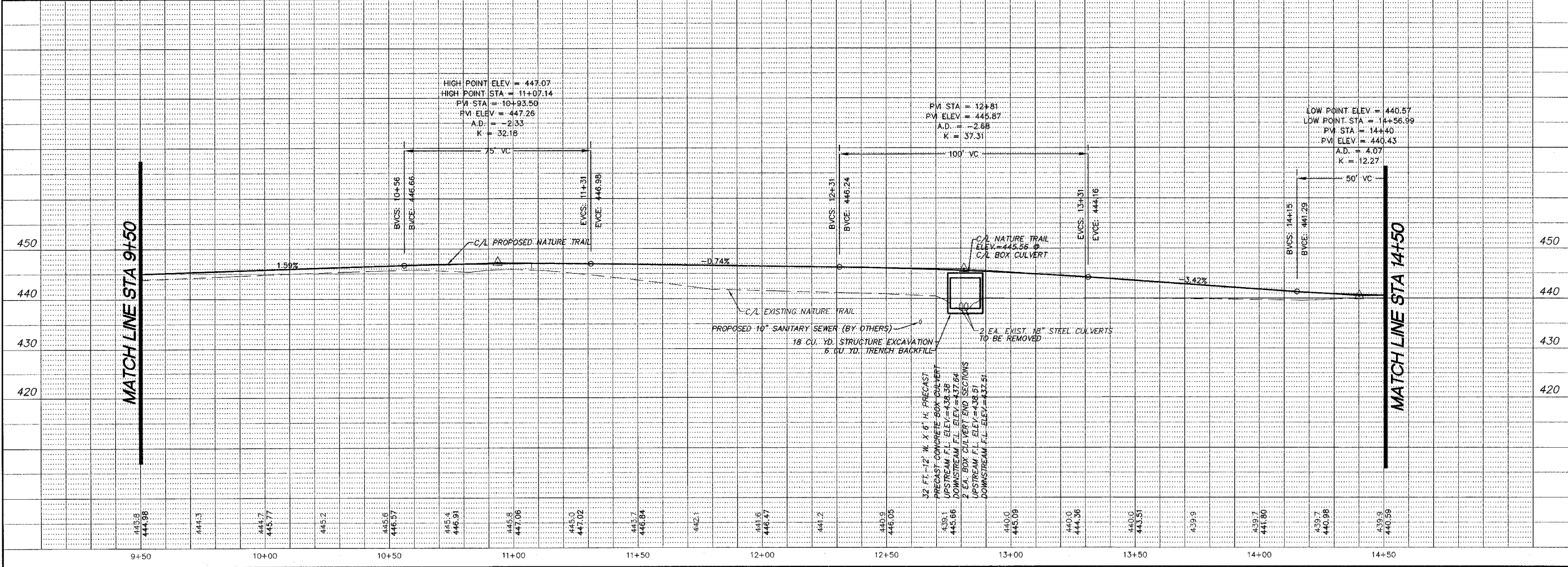
F.A. R.T.E.	SECTION	COUNTY	TOTAL SHEETS	SHEET NO.
	03-00017-00-BT	MADISON	19	7
MADISON COUNTY, ILLINOIS - FED. AID PROJECT				
CONTRACT No. 97286				



**HORIZONTAL CURVE DATA**

CURVE No. 4	CURVE No. 5	CURVE No. 6
$\Delta = 38^\circ 49' 23''$	$\Delta = 33^\circ 42' 44''$	$\Delta = 6^\circ 55' 09''$
$R = 305.91$	$R = 165.90$	$R = 305.91$
$T = 107.80$	$T = 50.27$	$T = 18.49$
$L = 207.28$	$L = 97.61$	$L = 36.94$
$PI = 11+08.62$	$PI = 13+00.79$	$PI = 14+09.05$
$PC = 10+00.82$	$PC = 12+50.52$	$PC = 13+90.55$
$PT = 12+08.10$	$PT = 13+48.13$	$PT = 14+27.49$

- BENCH MARK**
- UP STREAM F.L. OF PIPE LOCATED AT STA. 12+75.59, 7.33' LT. ELEV.=437.51
  - UP STREAM F.L. OF PIPE LOCATED AT STA. 12+77.96, 9.12' LT. ELEV.=437.61
  - DOWN STREAM F.L. OF PIPE LOCATED AT STA. 12+85.31, 8.36' RT. ELEV.=437.61
  - DOWN STREAM F.L. OF PIPE LOCATED AT STA. 12+87.75, 7.19' RT. ELEV.=437.66



REVISIONS

**SMS ENGINEERS**  
Sheppard, Morgan & Schwaab, Inc.  
CONSULTING ENGINEERS AND LAND SURVEYORS  
215 Market Street, P.O. Box E, Alton, IL 62002-6186  
618-662-9755 Email: mail@smsengineers.com  
10 Central Industrial Drive, Granite City, IL 62040-6187 618-671-5700 Email: mail@smsengineers.com

VILLAGE OF GODFREY, ILLINOIS  
LAVISTA PARK NATURE TRAIL IMPROVEMENTS  
GODFREY SECTION 03-00017-00-BT  
PLAN AND PROFILE

LAVISTAPP4.DWG

REF. BK.	PG.
JOB NO.	436010
DSN. BY:	CLA
DWN. BY:	CDP
CHK. BY:	JHH
DATE:	JUNE 2006
SCALE:	HORIZ. 1"=20' VERT. 1"=10'
SHEET	7 OF 19

isp-linc project\godfrey\pdr\_436010\Drawings\LAVISTAAPP4.dwg, 12/22/2006 2:55:49 PM, gpmatt, 1/20